

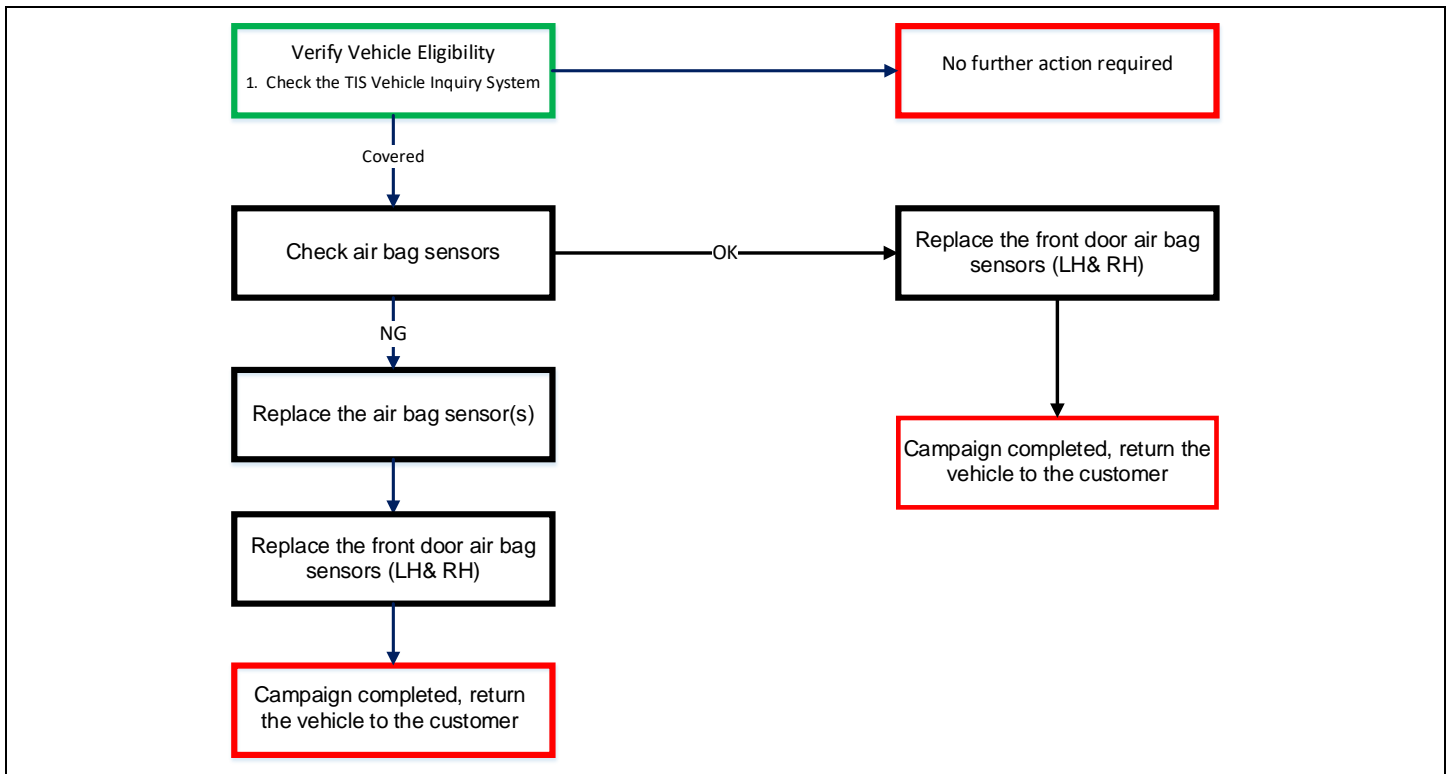
**TECHNICAL INSTRUCTIONS**  
**FOR**  
**SAFETY RECALL JLA**  
**AIR BAG SENSOR REPLACEMENT**  
**INSPECTION REQUIRED**  
**CERTAIN 2016 RX MODELS**

The repair quality of covered vehicles is extremely important to Lexus. All dealership technicians performing this recall are required to successfully complete the most current version of the E-Learning course “Safety Recall and Service Campaign Essentials”. To ensure that all vehicles have the repair performed correctly; technicians performing this recall repair are required to currently hold at least one of the following certification levels:

- Certified (with L652 course completed)
- Senior (with L652 course completed)
- Master

It is the dealership’s responsibility to select technicians with the above certification level or greater to perform this recall repair. Carefully review your resources, the technician skill level, and ability before assigning technicians to this repair. It is important to consider technician days off and vacation schedules to ensure there are properly trained technicians available to perform this repair at all times.

## I. OPERATION FLOW CHART



## II. IDENTIFICATION OF AFFECTED VEHICLES

- Check the TIS Vehicle Inquiry System to confirm the VIN is involved in this Safety Recall, and that it has not already been completed prior to dealer shipment or by another dealer.
- TMS warranty will not reimburse dealers for repairs completed on vehicles that are not affected or were completed by another dealer.

## III. PREPARATION

### A. PARTS

Part Number	Part Description	Quantity
04007-2A347	SENSOR, PRESSURE SIDE AIR BAG	2
74231-0E090	PANEL, FR DOOR ARMREST BASE, UPR RH (Window Switch Cover - Passenger Side)	1

- **Inspection software will provide part number information, if it is determined part replacement is required.**
- **An airbag sensor will not be released without a screenshot submitted of the judgement screen from the inspection software. Refer to the MAC report for additional details.**

### B. TOOLS & EQUIPMENT

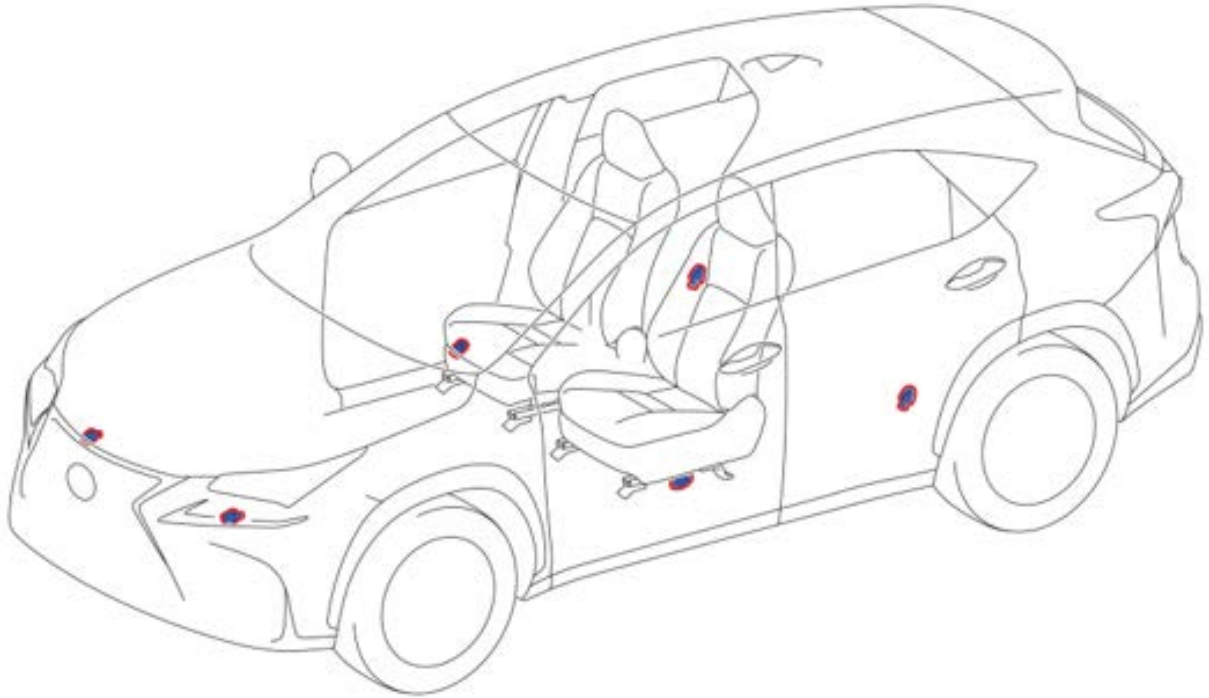
- Techstream
- Moulding Remover
- Feeler Gauge
- Standard Hand Tools
- Hexagon Socket Wrench
- Torque Wrench
- Soldering Iron

### C. MATERIALS

- Protective Tape
- Marker Pen

#### IV. BACKGROUND

The involved vehicles have airbag systems where an open circuit could be created over time. If this were to occur, the airbag warning light will illuminate, and the side/curtain shield airbags, and/or front airbags, may not deploy. Airbag non-deployment could increase the risk of injury to the occupants in the event of a crash.



## V. WORK PROCEDURE



### 1. CHECK FOR DTC'S

- a. Using a Techstream, check for Diagnostic Trouble Codes.

***Note: This Safety Recall covers only the air bag sensors, as detailed in these instructions. It does not cover the diagnosis or replacement of any other parts on the vehicle.***

### 2. CLOSE TECHSTREAM SOFTWARE

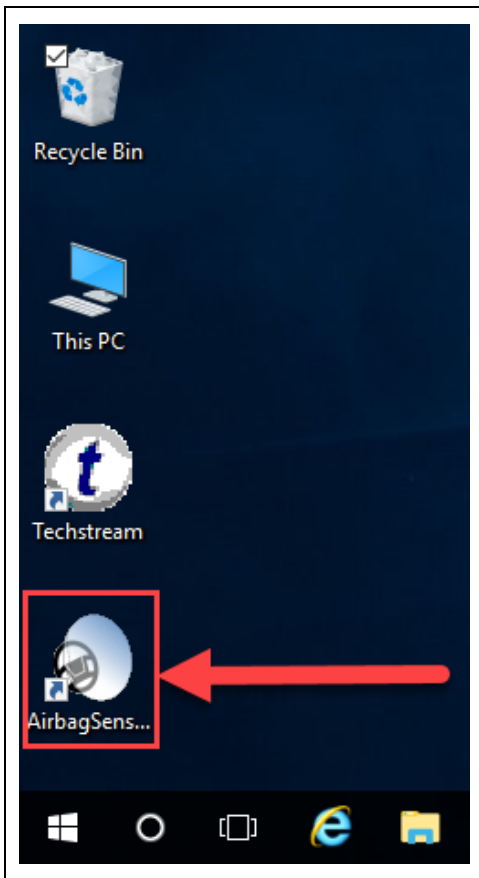
- a. You must exit and close Techstream program for the Judgment software to work properly.

**NOTE: If Techstream Program is running, the Judgment software may not work properly.**

### 3. DOWNLOAD JUDGMENT SOFTWARE (if not previously downloaded)

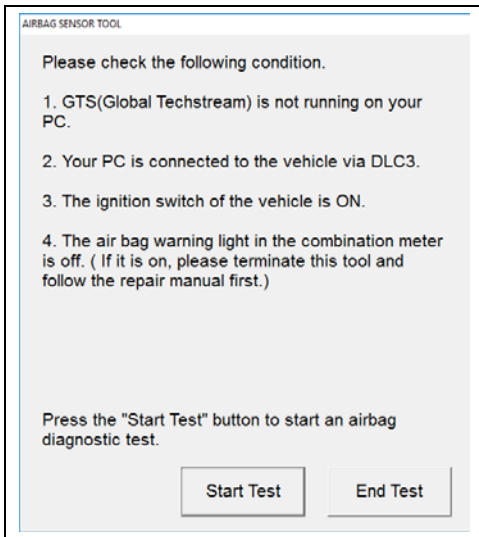
- a. Click the link below to download the Judgment software
- b. If the Judgment Software has been already downloaded, continue to step 4.

**[CLICK HERE TO DOWNLOAD SOFTWARE](#)**



#### 4. PERFORM AIR BAG SENSOR JUDGMENT

a. Open Airbag Judgment Software



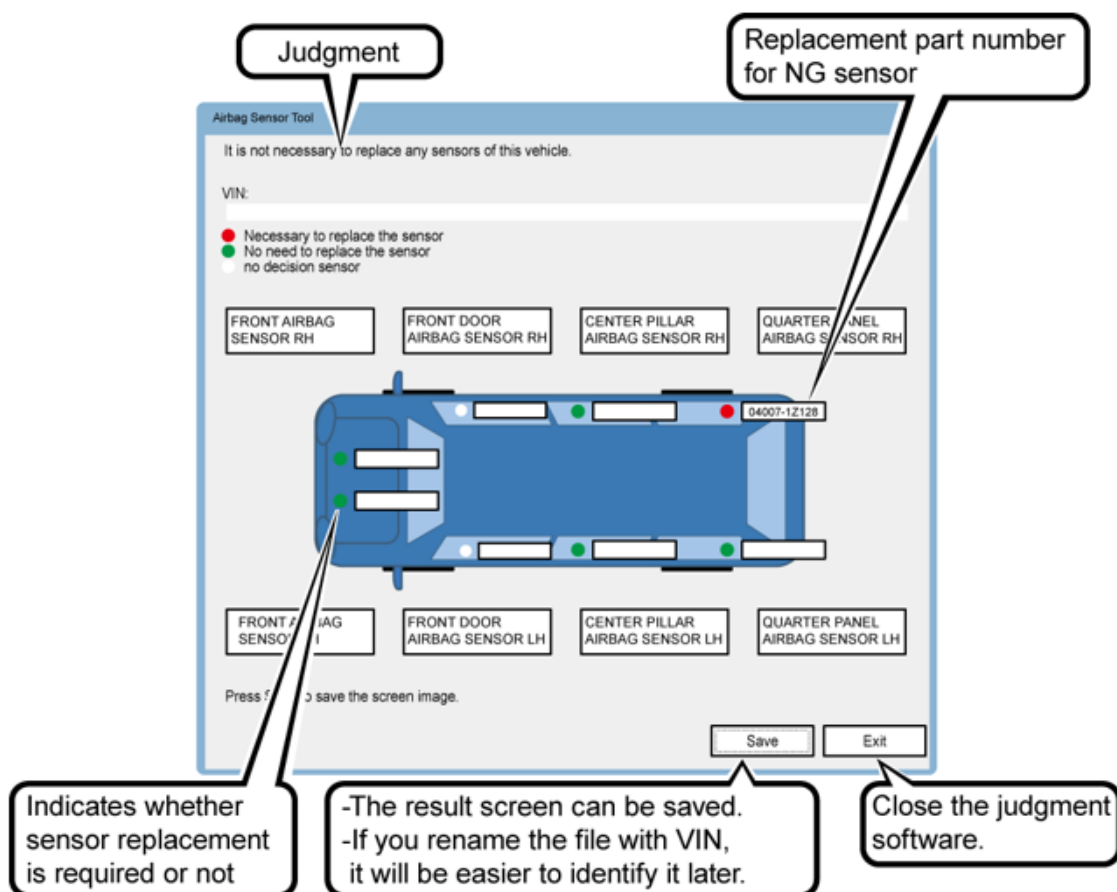
b. Confirm that the conditions shown on the screen are met.

c. Select "Start Test"

d. Determine whether replacement is needed for each sensor based on the judgment result screen



- **SAVE THE JUDGMENT RESULT SCREEN AND RENAME THE FILE WITH THE VIN**
- **THIS RESULT SCREEN MUST BE ATTACHED WITH THE REPAIR ORDER**



R1712110001

Judgment result	Measure
Green 	No need to replace the sensor.
Red 	Replace the sensor with the sensor of replacement part number shown on the result screen.
White 	All front door airbag sensors for RX need to be replaced in any case. <b><u>This dot will <i>NOT</i> change to green after the sensors are replaced. ONLY REPLACE THE SENSORS ONCE (Part number:04007-2A347)</u></b>

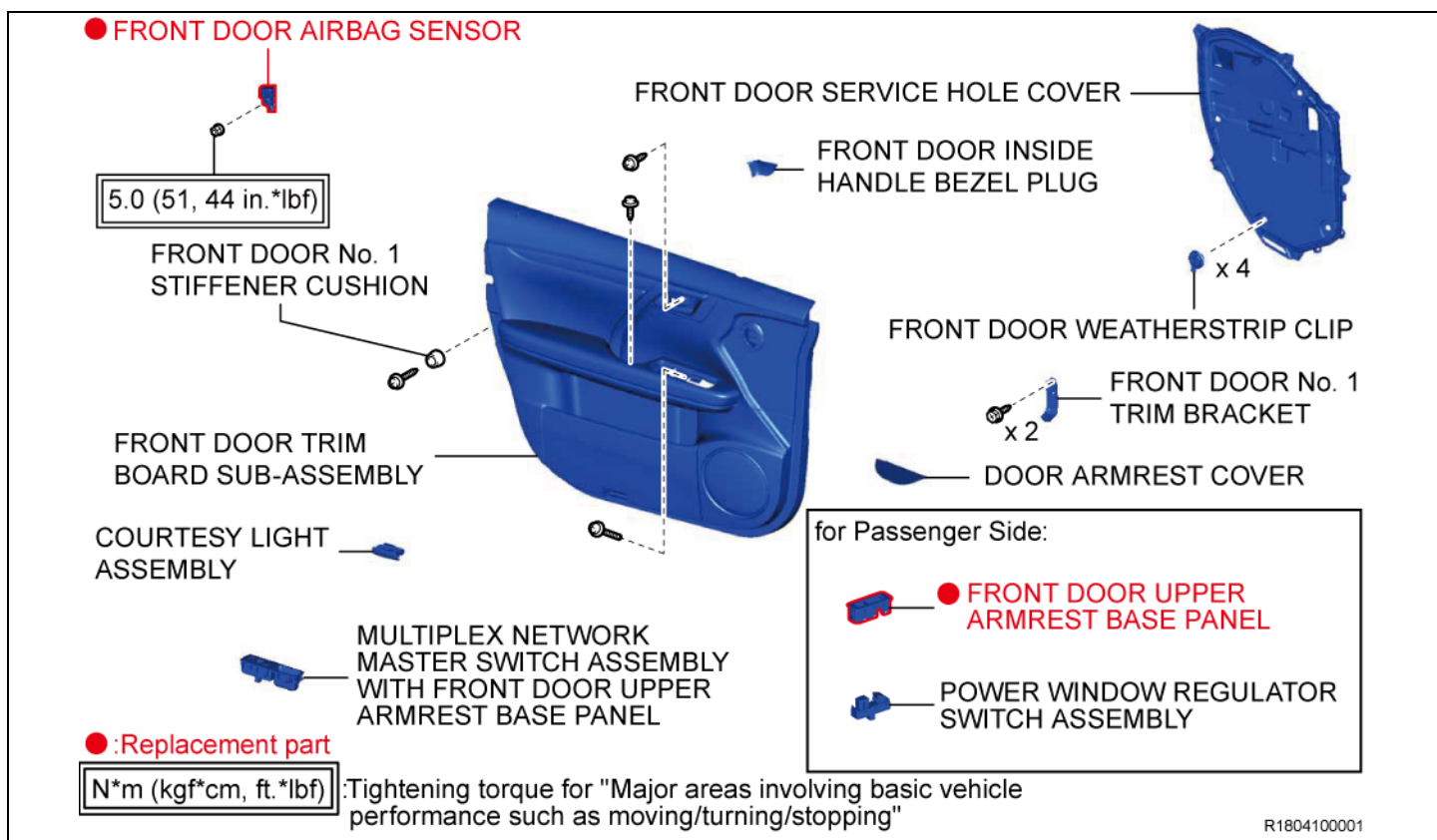
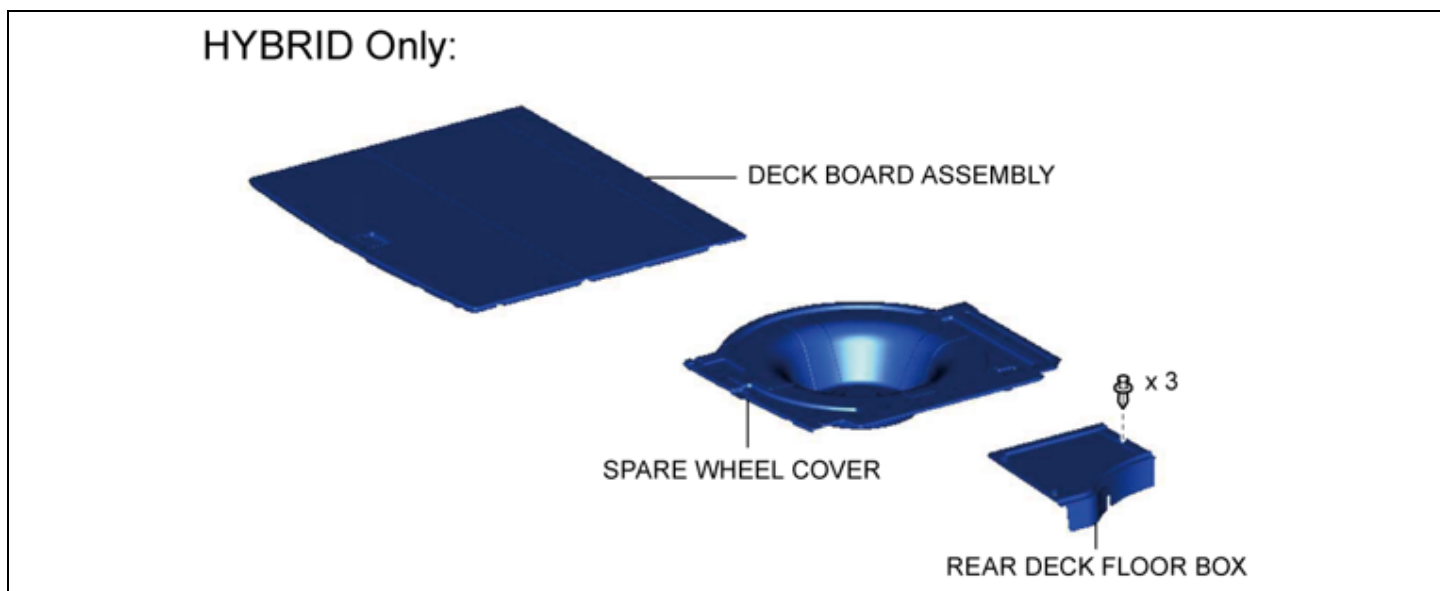


- The White dot will NOT change to green after replacement

## VI. REPLACE FRONT DOOR AIRBAG SENSOR LH & RH (INSIDE FRONT DOOR)

\*Illustrations only show the LH side

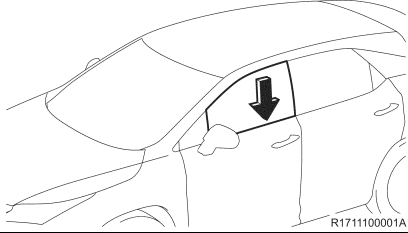
### COMPONENTS



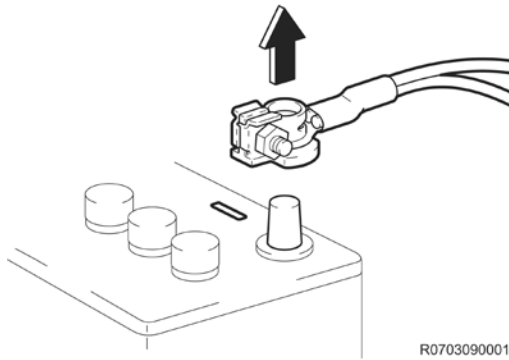
### 1. RECORD SETTINGS OF THE AUDIO SYSTEM, AIR CONDITIONER, ETC.

- For devices such as the audio system, air conditioner, etc, record current settings before the negative (-) battery terminal is disconnected.

Fully open the side window



## 2. FULLY OPEN THE SIDE WINDOW



## 3. DISCONNECT NEGATIVE BATTERY CABLE



- Wait at least 90 seconds after disconnecting the cable from the negative battery terminal to prevent airbag and seat belt pretensioner deployment.
- For models with a HDD navigation system, wait at least 6 minutes before disconnecting the battery. It takes approximately 6 minutes for the system to save information and settings after the engine switch is turned off.
- Follow all precautions as outlined on TIS before servicing the SRS system.



## 4. REMOVE MASTER SWITCH ASSEMBLY (FOR DRIVER SIDE ONLY)

- a) Using a moulding remover, disengage the 4 clips and 4 guides in the area shown in the image.

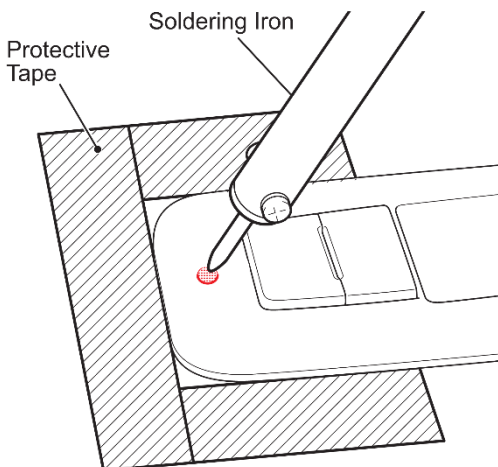


- If you try to disengage the switch by prying on an area beside the one in the image, the chance of door panel damage is very high

- b) Disconnect the connector.



- The following procedure is designed to reduce the risk of door panel damage during window switch removal. Do not deviate from the procedure below.



R1803270001

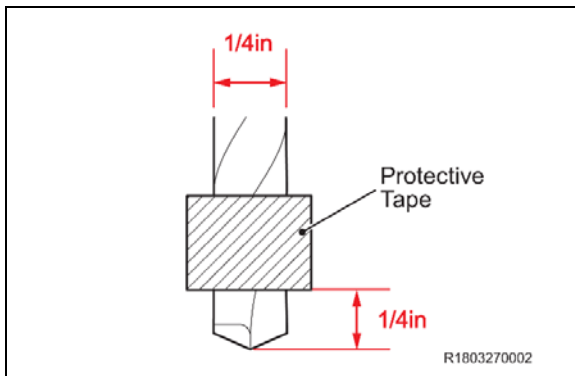
## 5. REMOVE WINDOW SWITCH FROM DOOR PANEL (PASSENGER SIDE ONLY)

- a) Apply protective tape as shown in the illustration
- b) Using a Soldering iron, make an indent into the window switch cover between the front edge and the lock button.
- c) Make the same indent between the rear edge of the window switch and the window button.



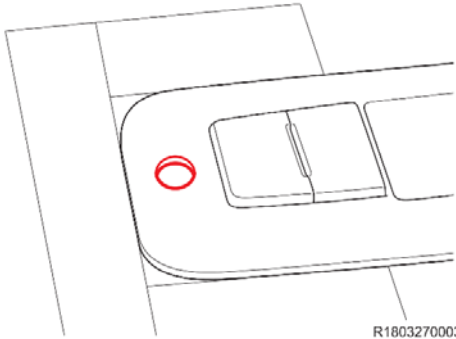
- Be careful to not touch the door panel, window switch buttons, or other interior trim with the soldering iron.





- To prevent the drill to go through the hole and damage the part, wrap protective tape around the drill bit at 1/4in from its point.

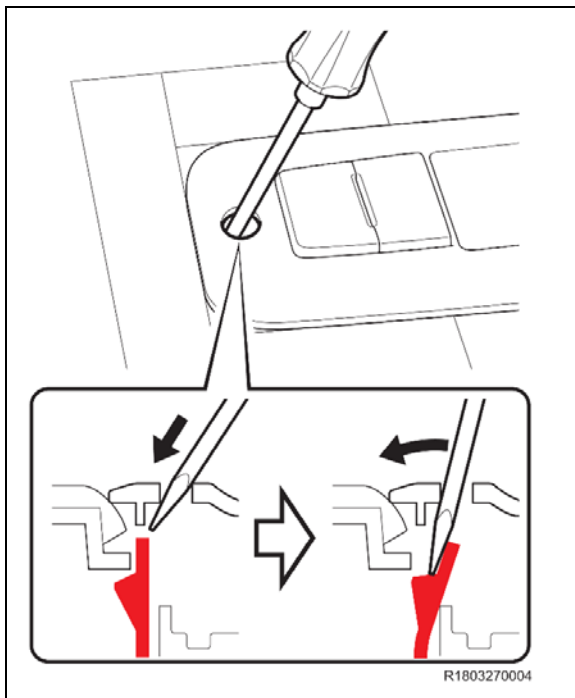
**Be careful not to damage the door panel**



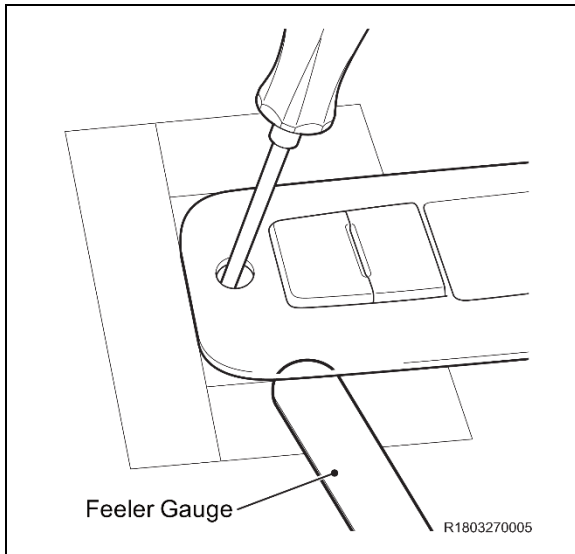
- d) Using a 1/4in drill bit, drill a hole into the window switch cover using the indents made from the soldering iron as a guide.



- Use a slow speed on the drill to reduce the chances of the drill slipping off the window switch.



- e) Using a small screwdriver, release the locking tab by inserting the screwdriver into the hole and prying the tab back.



- f) Once the locking tab is released, using a feeler gauge to lift up on the window switch.
- g) Use the same procedure for releasing the locking tab at the rear of the window switch.



- Make sure that the locking tab is released before trying to insert a feeler gauge between the window switch and door panel.
- If the locking tab is not released, you could cut the leather on the door panel while trying to insert the feeler gauge.

- h) Remove the window switch cover from the window switch assembly and replace with a **NEW** one

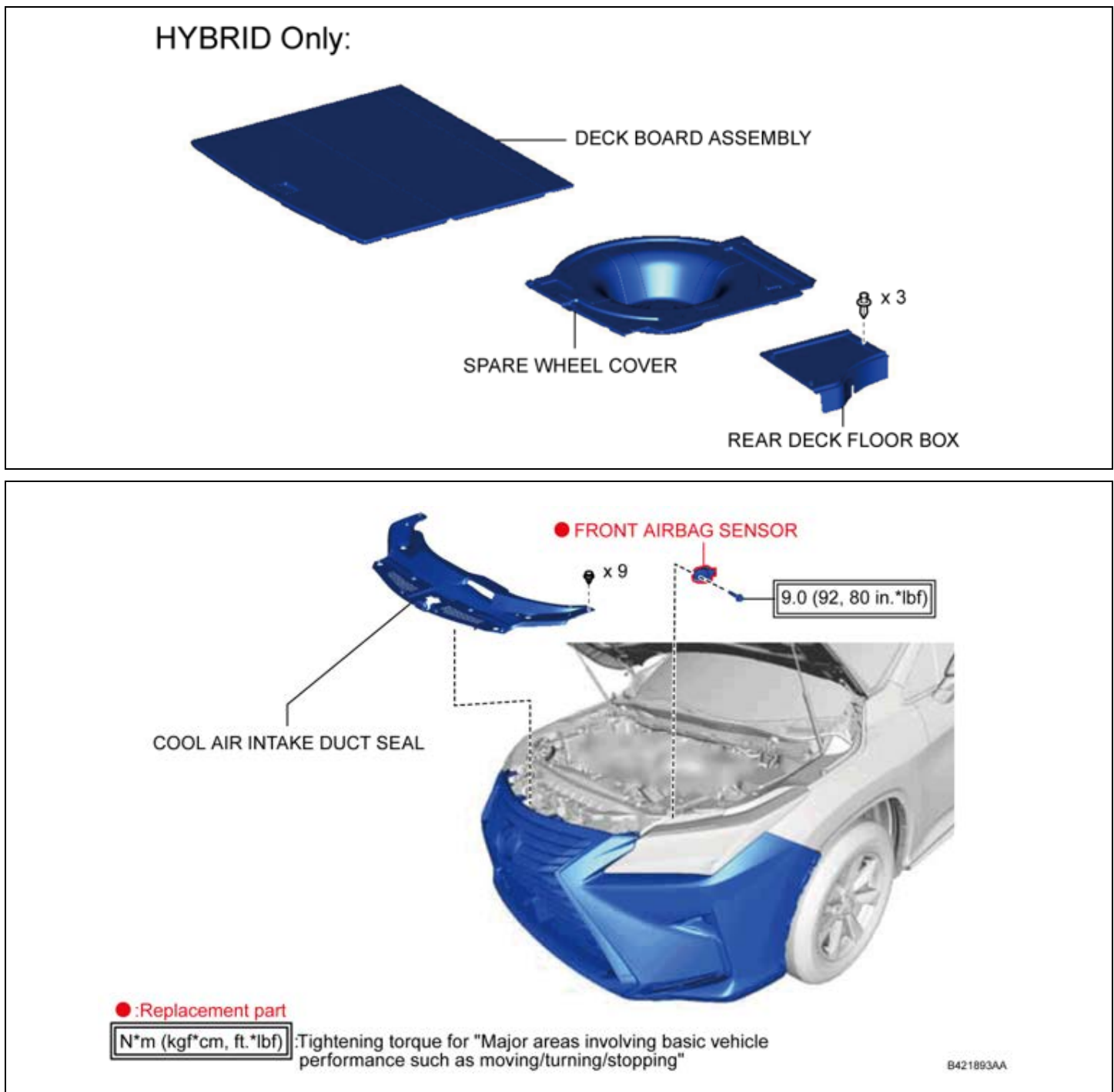
## 1. REMOVE AND REPLACE THE FRONT DOOR AIR BAG SENSOR (LH AND RH)

- a. Click the link to access the removal and installation instructions for the front air bag sensor (inside the door) ([R&R FRONT DOOR AIR BAG SENSOR](#))

## VII. REPLACE FRONT AIR BAG SENSOR LH & RH (ADJACENT TO HEADLIGHT)

\*Illustrations only show the LH side

### COMPONENTS:



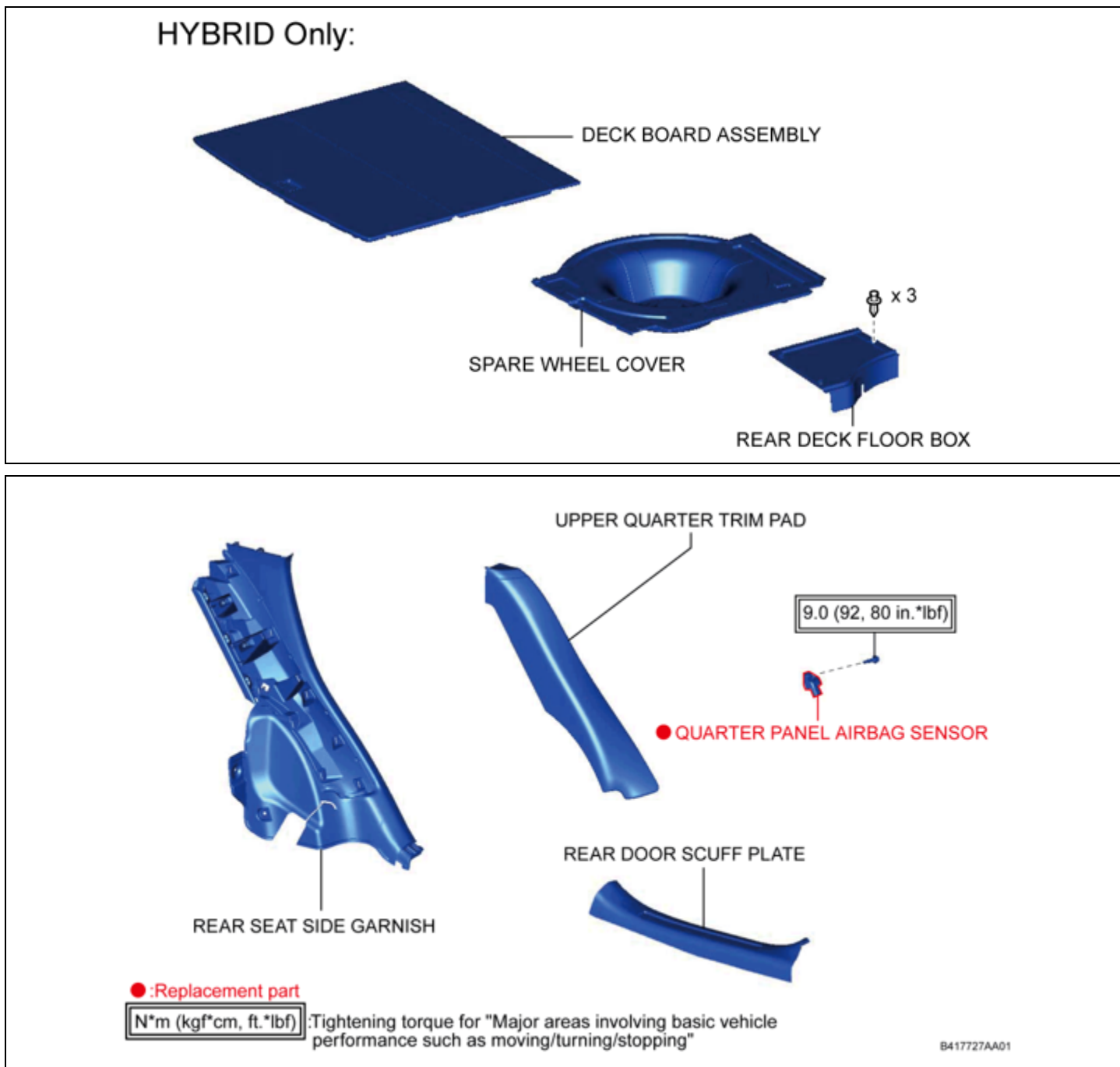
### 1. REMOVE AND REPLACE THE FRONT AIR BAG SENSOR (LH & RH)

- Click the link to access the remove and install instructions for the front air bag sensor (Adjacent to the headlight) ([R&R FRONT AIR BAG SENSOR](#))

## VIII. REPLACE QUARTER PANEL AIR BAG SENSOR LH & RH

\*The illustrations only show LH side

### COMPONENTS



### 1. REMOVE AND REPLACE THE QUARTER PANEL AIR BAG SENSOR (LH AND RH)

- Click the link to access the removal and installation instructions for the quarter panel air bag sensor ([R&R FOR QUARTER PANEL AIR BAG SENSOR](#))

## ◀ VERIFY REPAIR QUALITY ▶

Check that there is no air bag light or DTC's  
 Check to make sure that you have replaced both RH & LH front door air bag sensors  
 Check to make sure you have replaced the window switch cover with a **NEW** one  
 Check that you have replaced all NG sensors

If you have any questions regarding this update, please contact your area representative.

### IX. APPENDIX

#### A. PARTS DISPOSAL

As required by Federal Regulations, please make sure all recalled parts (original parts) removed from the vehicle are disposed of in a manner in which they will not be reused, ***unless requested for parts recovery return.***

#### B. CAMPAIGN DESIGNATION DECORDER

