

2006 B-SERIES - PASSENGER AIR BAG SAFETY RECALL 2318A

January 22, 2026.

**VIDEO REQUIREMENT – CLICK BELOW TO WATCH THE VIDEO OF INFLATOR INSTALLATION.**



<http://tsd.mazdausa.com/videos/B%20Series%20Truck%20Inflator%20Installation.mp4>

There is a Do Not Drive designation for this campaign as of August 2024. Warranty information guidelines for rentals and towing were also updated.



**ATTENTION ALL MAZDA DEALERS:**

THIS CAMPAIGN HAS BEEN DESIGNATED AS A DO NOT DRIVE RECALL. IF THE CUSTOMER REQUESTS TO TOW THE VEHICLE TO THE DEALER, PLEASE HONOR THE REQUEST AND REVIEW GUIDELIENS FOR CLAIMING TOWING BELOW. THE VEHICLE CAN ALSO BE TOWED BACK TO THE CUSTOMER HOME/WORK, ETC.. UPON REQUEST. ALL TOWS ABOVE \$1,000 WILL REQUIRE WARRANTY PREAUTH GOODWILL PRIOR TO TOWING.

MOBILE REPAIR BY MAZDA DEALER: THIS OPTION IS ENCOURAGED AND CLAIM INFORMATION IS CONTAINED IN EACH TAKATA RECALL. IF ADDITONAL COSTS ARE NEEDED TO COMPLETE A MOBILE REPAIR PLEASE FILL OUT DEALER RECALL HELP ON ONEMAZDA.

PLEASE DO NOT DENY A CUSTOMER REQUEST TO TOW WITHOUT SPEAKING WITH YOUR DISTRICT SERVICE MANAGER OR FILL OUT DEALER RECALL HELP ON ONEMAZDA.

LOANER VEHICLE: MCVP / RENTALS: A CUSTOMER CAN RECEIVE A MCVP OR RENTAL DURING THE REPAIR PERIOD, BUT MUST PICK UP THE VEHICLE WITHIN 48 HOURS OF THE REPAIR. ALL RENTALS GREATER THAN THE 2 DAY RENTAL POLICY MUST BE PRE-APPROVED UNLESS THE DEALER IS THE DSA TIER DOES NOT REQUIRE AUTHORIZATION.

UNREPAIRABLE VEHICLES: FILL OUT DEALER RECALL HELP ON ONEMAZDA WITH CLEAR PHOTOS AND DETAILED EXPLANATION ON WHY YOU CANNOT REPAIR. DO NOT LET THE CUSTOMER LEAVE UNTIL YOU HEAR BACK FROM THE RECALL HELP TEAM.

## A. VEHICLE INSPECTION PROCEDURE

The passenger side airbag inflator in the vehicle is part of a small population of inflators that pose a higher risk of **explosion** in the event of a crash that causes an air bag deployment. Two inflators built at Takata on the same day as the passenger side air bag inflator in the vehicle have **exploded** causing fatal injuries. **An inflator explosion could result in sharp metal fragments striking the driver or other vehicle occupants, resulting in SERIOUS INJURY OR DEATH.**

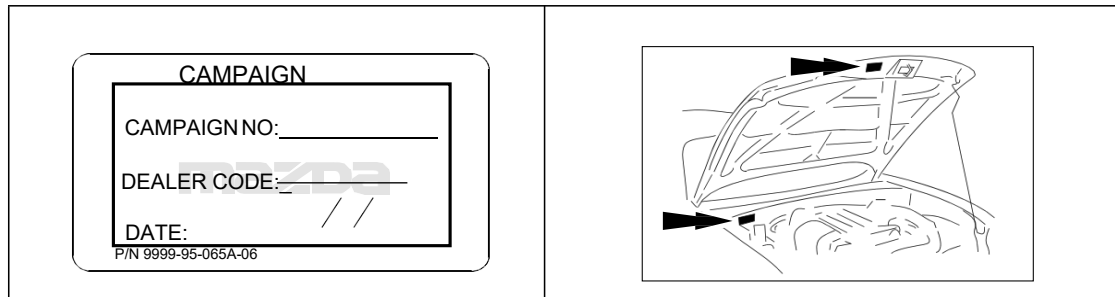
**All vehicles in Recall 2318A are also affected by Takata Driver Air Bag Recall 2218A**

1. Verify that the vehicle is within the following ranges:

Model	VIN Range
2006 B-Series	All

- If the vehicle is within the above ranges, proceed to Step 2.
  - If the vehicle is not within the above ranges, return vehicle to the customer or inventory.
2. Perform a Warranty Vehicle Inquiry using your eMDCS System and inspect vehicle for Campaign Labels **Recalls 2318A** attached to the vehicle's hood or bulkhead. Refer to eMDCS System - Warranty Vehicle Inquiry Results table below.

**NOTE:** Be sure to verify Recall number as the vehicle may have multiple Recall labels.



### eMDCS System - Warranty Vehicle Inquiry Results:

If eMDCS displays:	Campaign Label is:	Action to perform:
RECALL 2318A OPEN	Present	Contact Dealer Recall Help or the Warranty Hotline at (877) 727-6626 option 3 to update vehicle history.
	Not present	Proceed to "B. REPAIR PROCEDURE".
RECALLS 2318A CLOSED	Present	Return vehicle to inventory or customer.
	Not present	Proceed to "C. CAMPAIGN LABEL INSTALLATION".
RECALLS 2318A is not displayed	Does not apply	Recall does not apply to this vehicle. Return vehicle to inventory or customer.

**IMPORTANT:** Be sure to follow the packing and shipping instructions provided in the carton and in Air Bag Inflator Return Instructions.

**CAUTION**

- Use the same carton which was used to deliver a new inflator. It is a specialized box that is internationally accepted for shipping an inflator.
- Pack the old inflator in the box exactly in the same manner as the new inflator was packed.

## B. REPAIR PROCEDURE

### Overview:

The video below must be watched prior to repair.

<http://tsd.mazdausa.com/videos/B%20Series%20Truck%20Inflator%20Installation.mp4>

The repair is to remove the passenger air bag from the vehicle and replace only the inflator portion. Please follow steps to return the used inflator to your parts department for storage and disposal.

### PASSENGER AIRBAG INFLATOR REPLACEMENT

#### Air Bag Module Removal:



*It is critical that the passenger airbag inflator is installed into the air bag module in the correct orientation. Do not use older versions of instructions to repair any Mazda vehicle. Please review each of the below steps carefully and pay particularly close attention to Steps 8 and 14 when installing the passenger side inflator. Air Bag Connectors and Battery Disconnect: Do not work on the vehicle without disconnecting the vehicle battery as this could result in damage to the vehicle or safety systems.*

#### WARNING:

- Perform the replacement in a clean environment. Oil, grease, water, etc. on components may cause the air bag modules to fail to deploy in an accident, which may cause serious injury. Do not allow oil, grease, water, etc., on components.
  - Inserting a screwdriver, etc., into the connector of an air bag module may damage the connector and cause the air bag module to deploy improperly, which may cause serious injury. Do not insert any foreign objects into the connector.
  - Do not disassemble the vehicle, other than instructed here.
  - Do not make an attempt to directly supply electrical power to the module and the inflator.
  - Keep the module facing of the pad surface upwards at all times, except during replacement.
  - Do not use the module and new inflator if they were dropped on the ground.
  - Avoid module and inflator exposure to temperatures of 194 degrees F (90 degrees C) or more.
1. Turn the ignition switch to the LOCK position.
  2. Disconnect the negative battery cable and wait for one (1) minute or more.
  3. Remove the passenger air bag module. Refer to MGSS online ([PASSENGER AIR BAG MODULE REMOVAL / INSTALLATION](#)).
  4. Lay a protective cloth on the work bench, then place the air bag module on it to avoid any damage or scratches to the surface.

**WARNING:** Do not allow any debris on or around air bag once the inflator is removed.

PASSENGER INFLATOR REPLACEMENT: IF YOU HAVE NOT WATCHED THE VIDEO DO IT NOW. IT WILL SHOW THE PROPER ORIENTATION OF THE INFLATOR AND END CAPS

<http://tsd.mazdausa.com/videos/B%20Series%20Truck%20Inflator%20Installation.mp4>

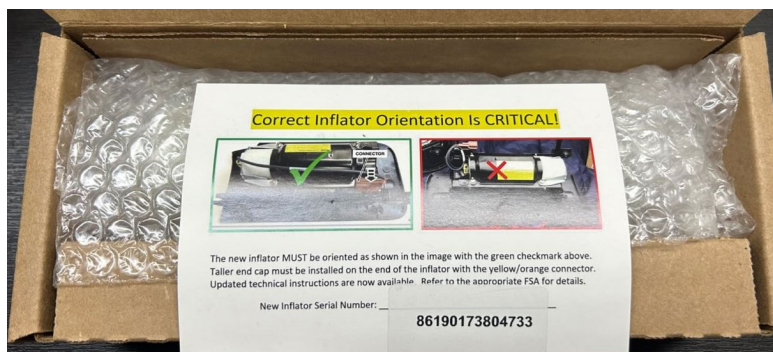


**DO NOT REMOVE THE END CAPS FROM THE PART. INSTALL THE INFLATOR AS IN STEP 8 WITH THE END CAPS PRE-ASSEMBLED. ALSO SEE PHOTO REQUIREMENTS ON PAGE 12 AND MAKE SURE THE PHOTO IS CLEAR WITH THE RO IN THE PHOTO.**

Inflator Part #1FT1-57-K50C



Inflator in box with warning label

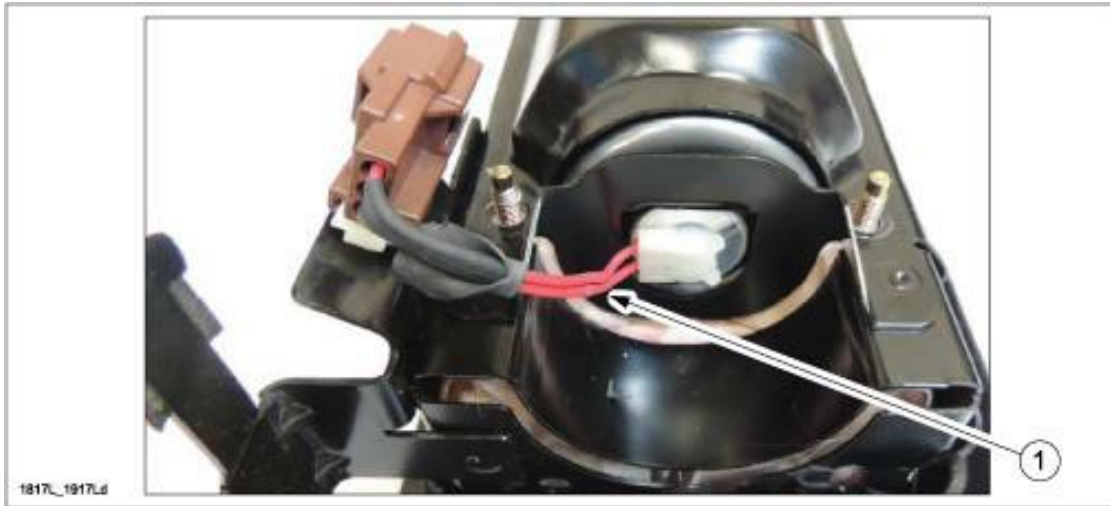


Inflator part box contents

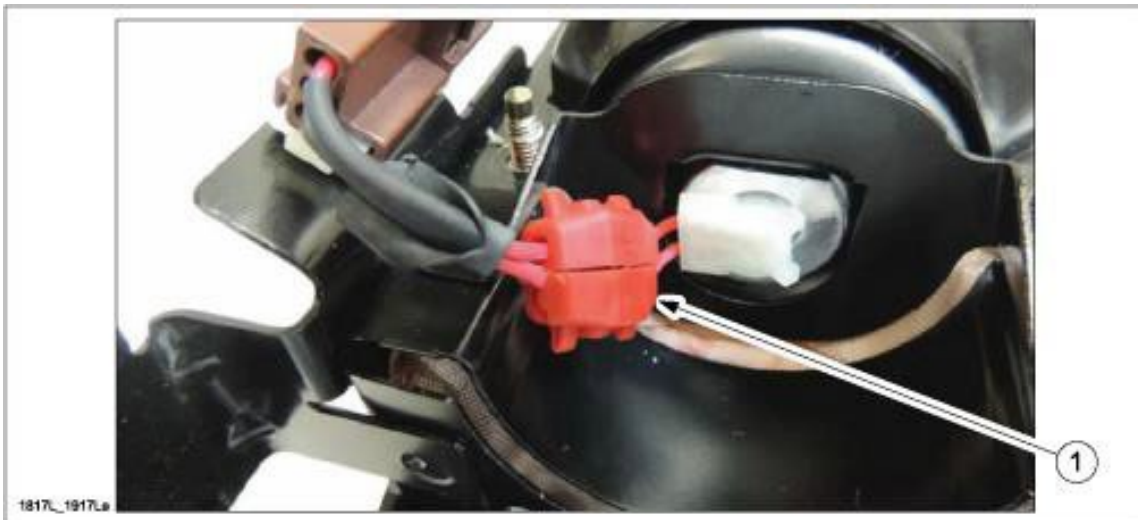


1. Inflator – **DO NOT REMOVE END CAPS AND INSTALL PREASSEMBLED, WITH THE SHORTER CAP FIRST (TAIL END CAP) INTO THE MODULE**
2. Bracket
3. Nuts (4) and clip (1)
4. PLEASE READ THIS WARNING LABEL

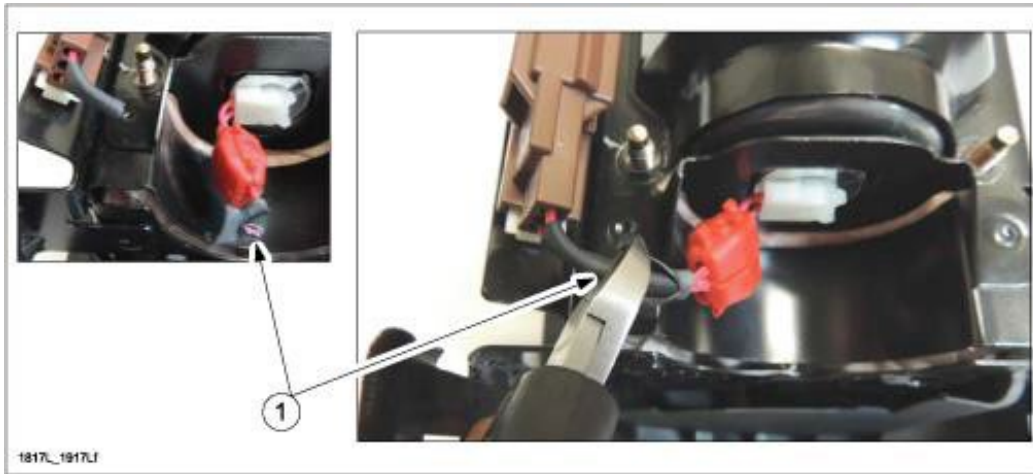
1. Cut and peel back the wiring sleeve to expose the inflator wiring (1).



2. Install a wiring shunt (1) between the inflator wiring connector and the inflator body. This will cause the inflator to become inert.



3. Cut the inflator wiring between connector and the shunt (1).



4. Remove and discard the four airbag inflator retaining nuts (1) and the bracket (2) using Hand tools.

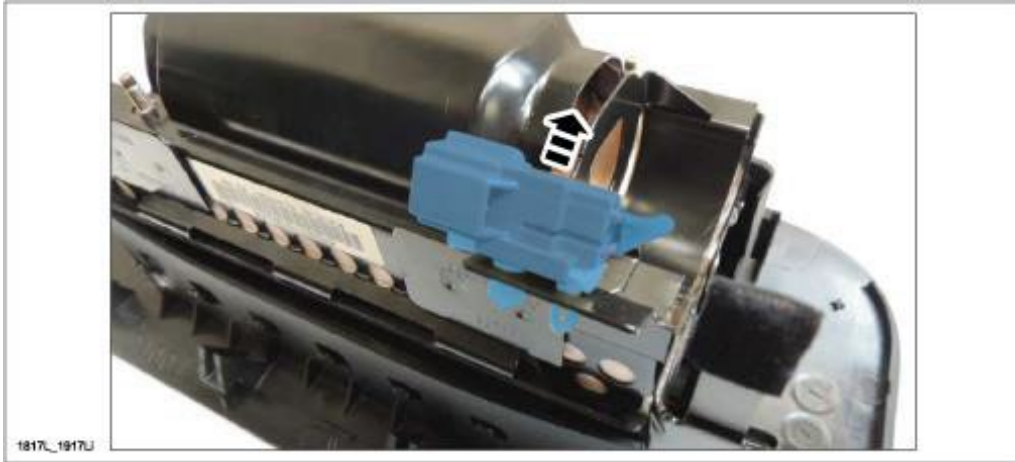


**⚠ WARNING: Do not allow any debris on or around the airbag once the inflator is removed.**

5. With an assistant holding the airbag assembly, remove the inflator from the airbag assembly by pushing outward on the inflator (1).



6. Remove the airbag inflator harness electrical connector.

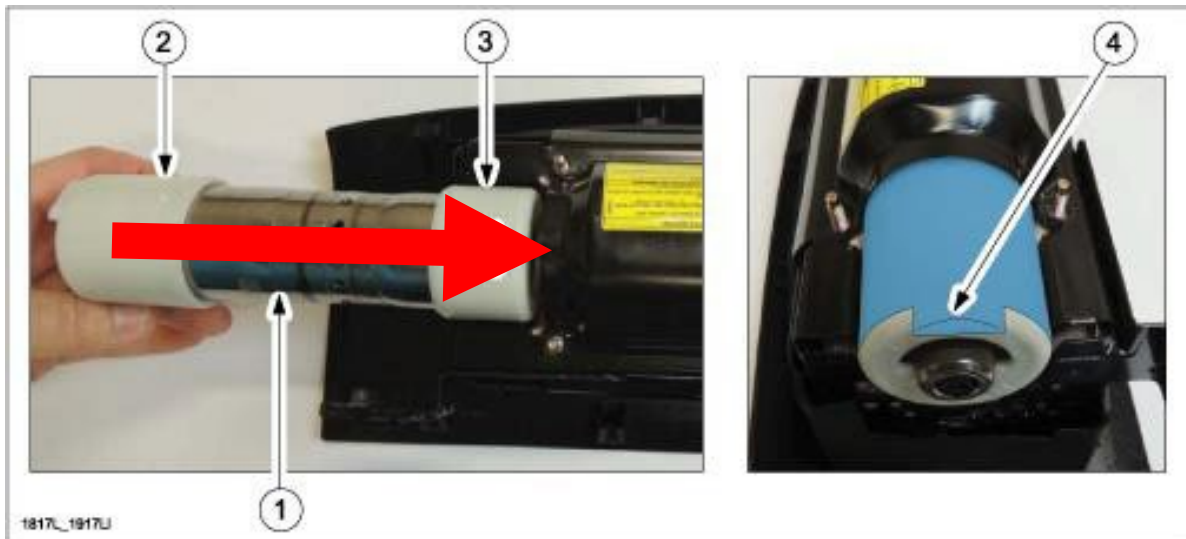


**DO NOT REMOVE THE END CAPS AND INSERT THE INFLATOR AS IN STEP 7 PRE-ASSEMBLED OUT OF THE BOX**

7. Install the inflator (1) into air bag assembly with the connector end cap facing out (2) and tail end cap facing inward (3) so that the left cap notch facing up (4).

**INSTALLATION DIRECTION IS SMALL END CAP FIRST**

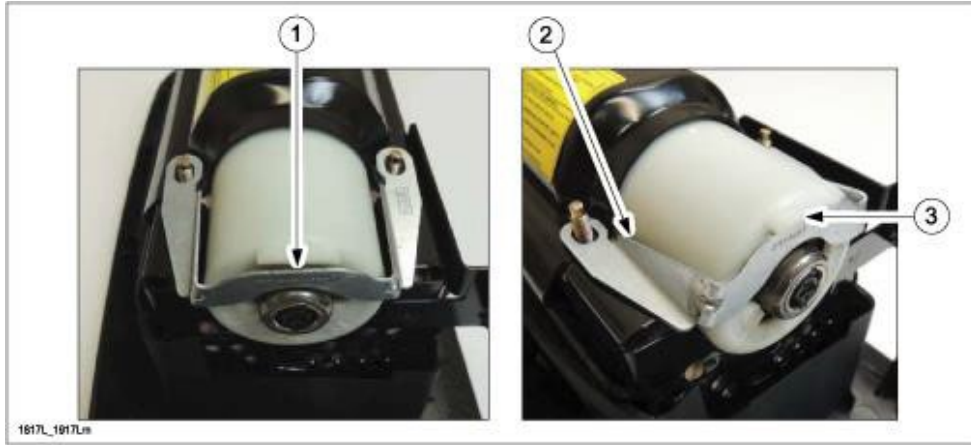
**NOTCH ON LEFT LARGE CAP IS IN THE UP POSITION**



PASSENGER AIR BAG SAFETY RECALL 2318A  
REPAIR PROCEDURE

8. Install (1) the new bracket under the notch for inflator alignment (2) the retaining bracket is positioned so the inflator retaining bracket is aligned under the notch (3)

**IF THE NOTCH IS NOT PRESENT ABOVE THE BRACKET, GO BACK TO STEP 7 AND REPEAT THE STEP. THE NOTCH ON LEFT LARGE CAP MUST BE IN THE UP POSITION ABOVE THE BRACKET**



9. Install the new nuts, making sure the pop-up indicator (1) on the air bag assembly is present.

**Tightening torque: 3.9 Nm (35 lb-in) in the specified sequence [1] [2] [3] [4]**



10. Align the T-shape index on both the wiring harness electrical connector and the airbag inflator, then connect the new airbag wiring harness to the inflator module and fully seat the orange tab.

11. Make sure the connection between the wiring harness electrical connector and the airbag inflator (1) is properly seated by gently pulling on the wiring harness.



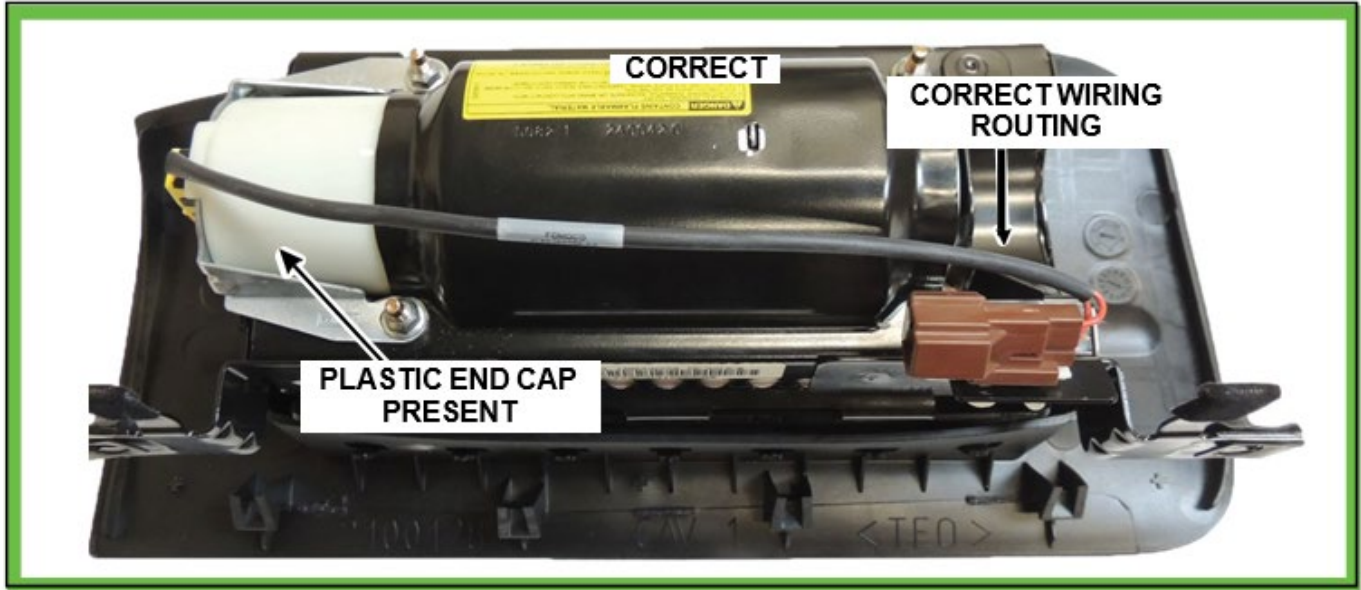
12. Install the inflator harness connector (1) to the air bag assembly bracket.



**CORRECT INSTALLATION CHECK AND CLAIM PHOTO REQUIREMENT:**

- 13. Confirm the plastic end caps are installed on correct ends of the inflator and the inflator is installed in the correct orientation (GOOD CONDITION - FIGURE 1). FIGURE 2 – Shows a NO GOOD (NG) CONDITION WITH AN INCORRECT INFLATOR INSTALLATION.

**FIGURE 1 – GOOD - CORRECT INSTALLATION**



**FIGURE 2 – NO GOOD (NG) INCORRECT INSTALLATION**

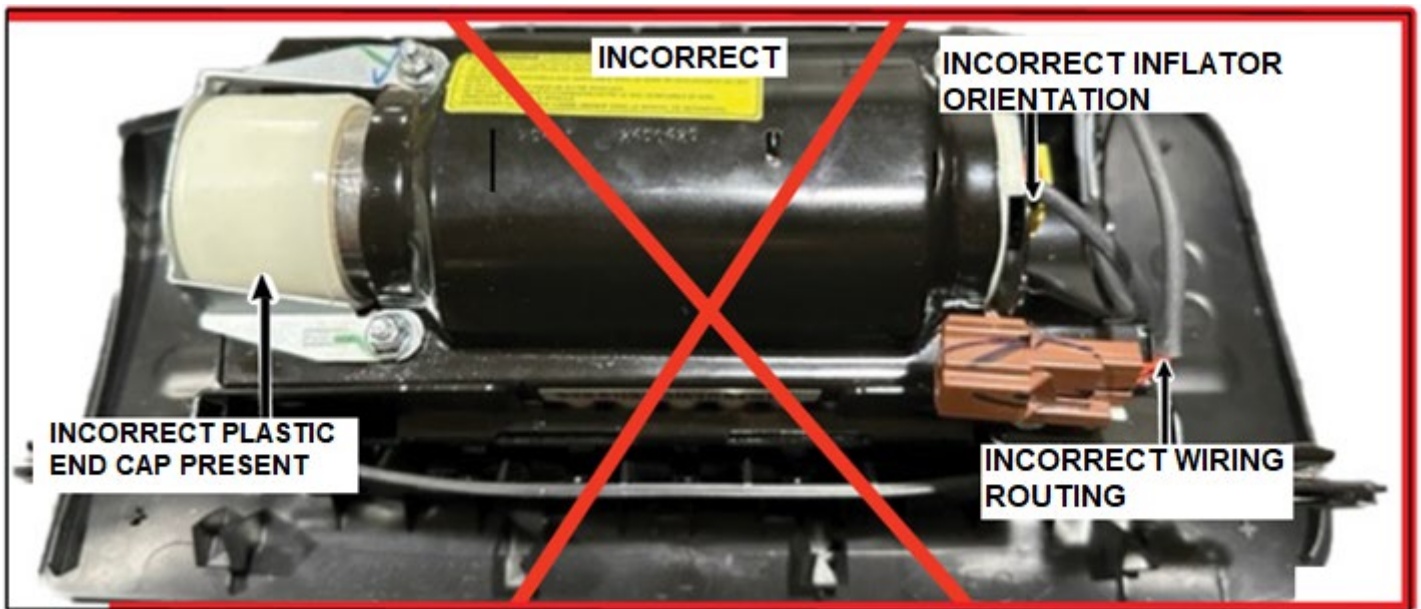


FIGURE 3 – NO GOOD (NG) INCORRECT ORIENTATION OF END CAP





**14. FINAL CHECK AND PHOTO REQUIREMENT:** If any step is not correct **DO NOT PROCEED**. **Required Photo example showing correct wiring:** Write the RO# on the case of the inflator that you are repairing with a grease pencil. Alternatively you can use the RO as shown below in the photo.

- a. The large left cap has a notch in the up position ABOVE the bracket. You should NOT see the silver inflator on the left side.
- b. The wire is across the inflator, with the yellow connector on the left.
- c. Your dealer RO# is written on the inflator module housing
- d. The repair order is clearly visible in the photo. For dealers on Electronic Repair Order, the claim must have a clear pdf or jpg repair order attached as a D01 attachment ID matching the repair order on the inflator.



**Air Bag Module Reinstallation:**

Install the passenger air bag module. Refer to MGSS online ([PASSENGER AIR BAG MODULE REMOVAL/INSTALLATION](#)).

1. Reconnect the negative battery cable.
2. Turn the ignition switch to the ON position.
3. Verify that the air bag system warning light illuminates for approx. 6 sec., then goes out.

**NOTE:** If the air bag system warning light does not operate in the manner described above, there is a malfunction in the system. Inspect the system following the on-board diagnostic system procedure according to MGSS online.

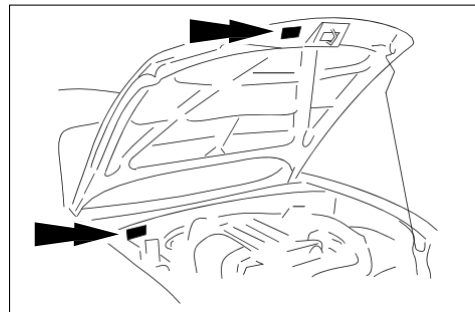
4. Re-enter the customer's preset radio stations.
5. Proceed to "C. CAMPAIGN LABEL INSTALLATION".

**C. CAMPAIGN LABEL INSTALLATION**

1. Fill out a black "Campaign Label" (9999-95-065A-06) for each campaign with Campaign No: "2318A", your dealer code, today's date.

CAMPAIGN LABEL	
CAMPAIGN NO:	_____
DEALER CODE:	_____
DATE:	/  /
P/N 9999-95-065A-06	

2. Affix it to the hood or bulkhead as shown:



3. Return the vehicle to customer.



Check if the vehicle has an Open recall 2218A. If yes, proceed to the repair procedure for 2218A "DRIVER SIDE AIR BAG REPLACEMENT" after installation of the Campaign label.

**END OF REPAIR PROCEDURE**