

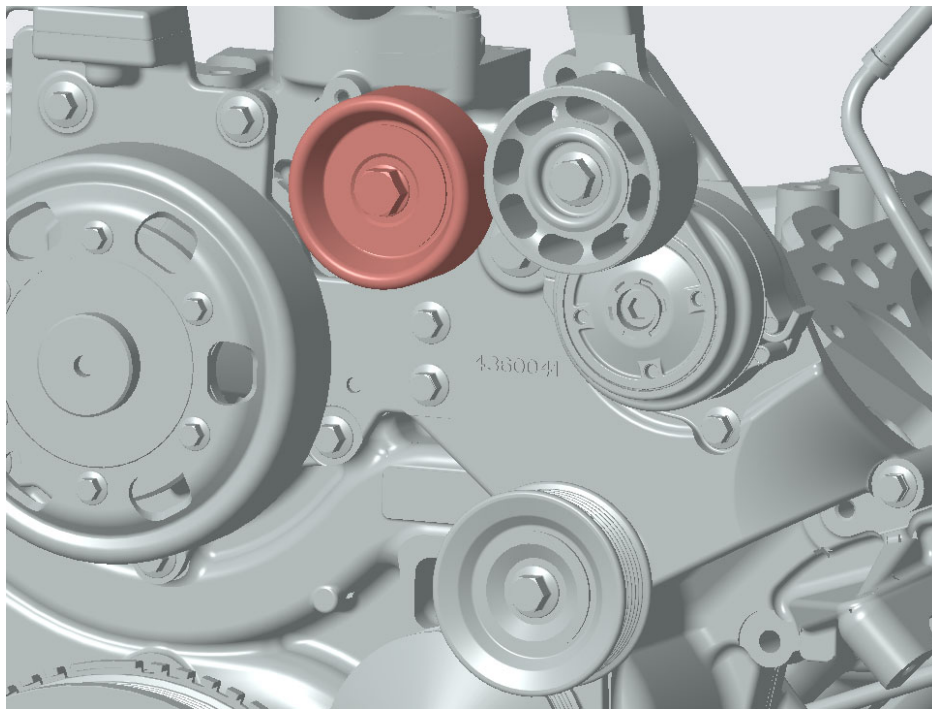
C2101 – Attachment B – ISV Secondary FEAD Upfit Instructions

ISV Secondary Belt Drive – Upfit Installation Instructions

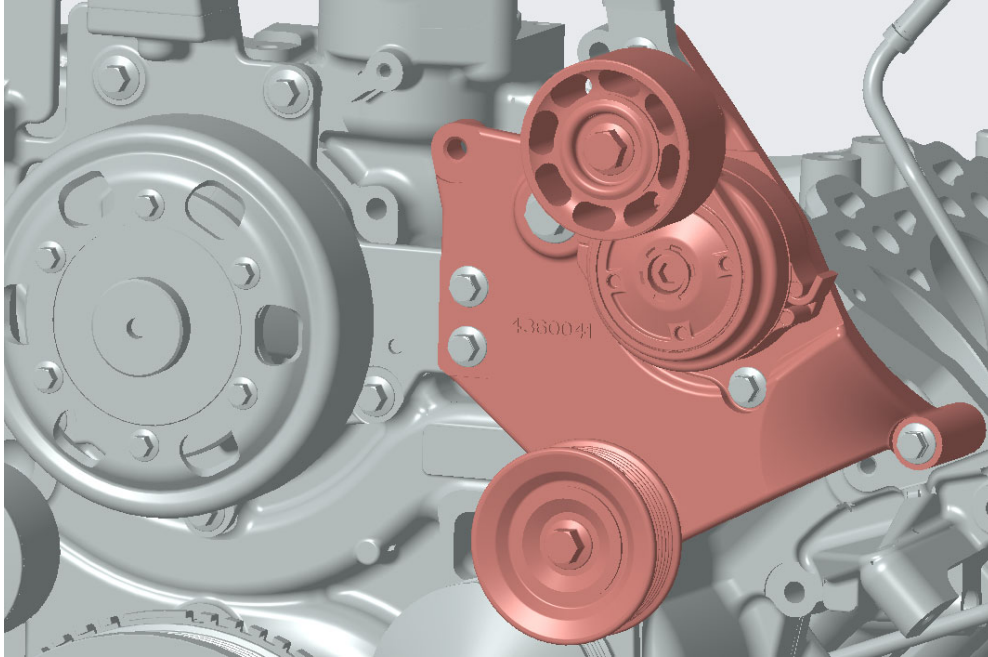
Remove primary (fan) drive belt. Refer to procedure 008-002-tr.

Remove secondary (refrigerant compressor) drive belt. Refer to procedure 012-117-tr.

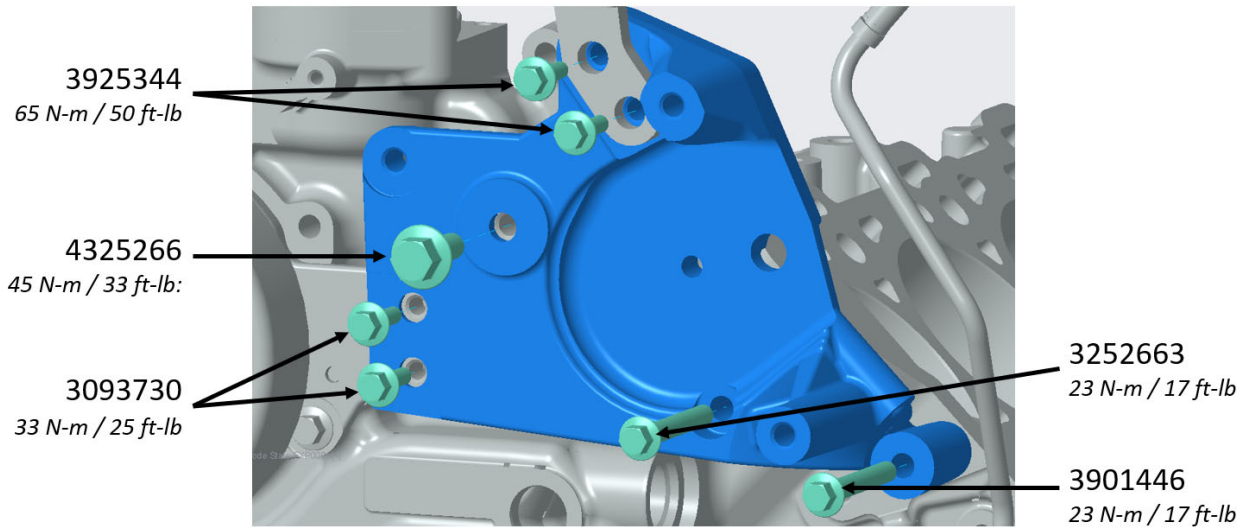
Remove upper left idler pulley (primary drive) 4390737 from the tensioner bracket and set aside.



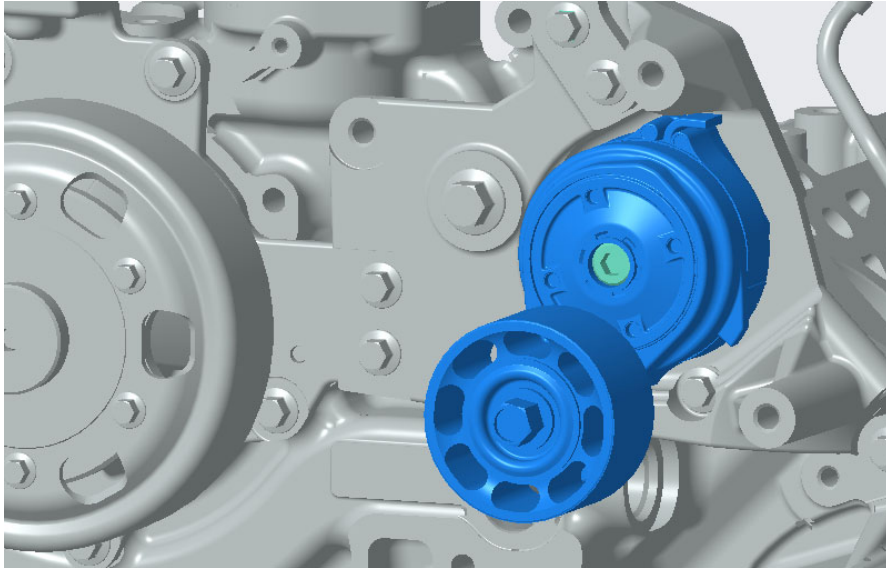
Remove tensioner bracket 4360041.



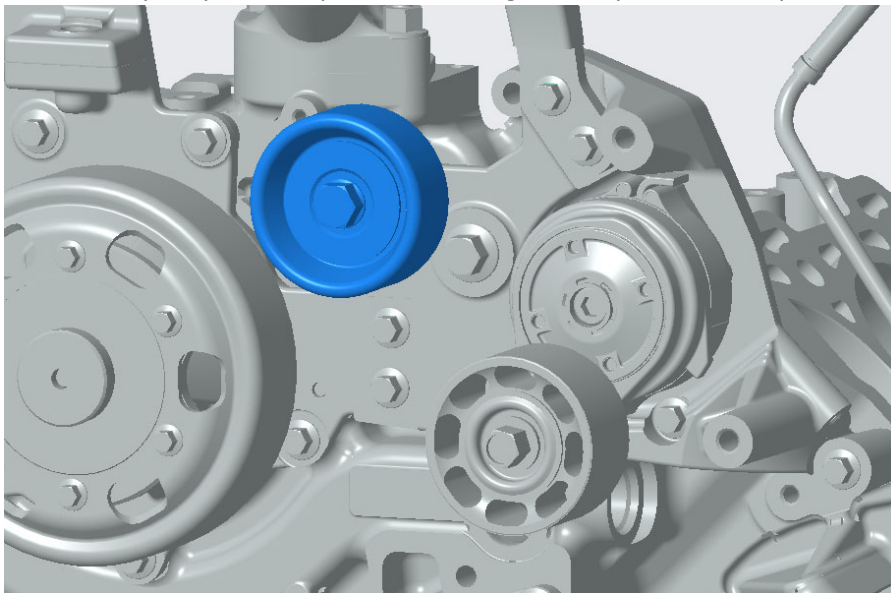
Install new tensioner bracket 5572555. See below figure for capscrew part numbers and torque specification.



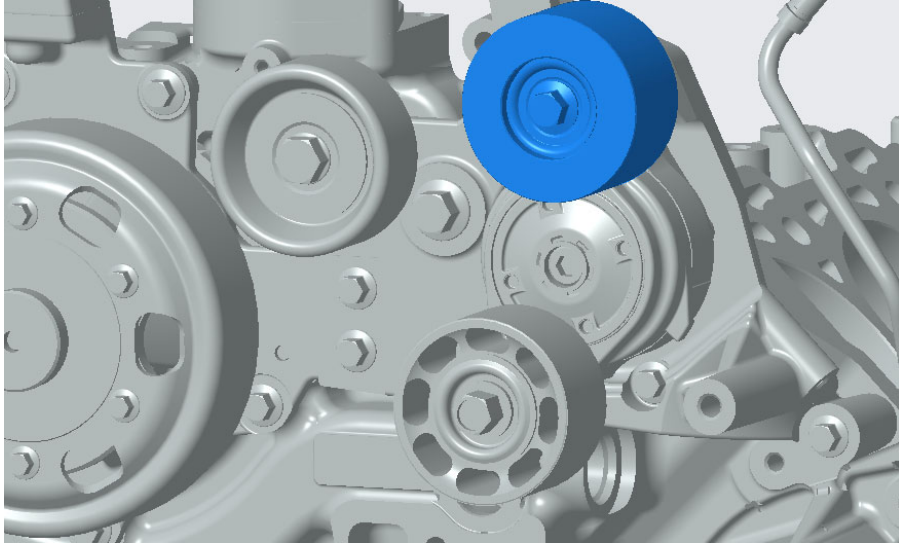
Install belt tensioner 4316721 using capcrew 4324939. Torque: 65 N-m [50 ft-lb]



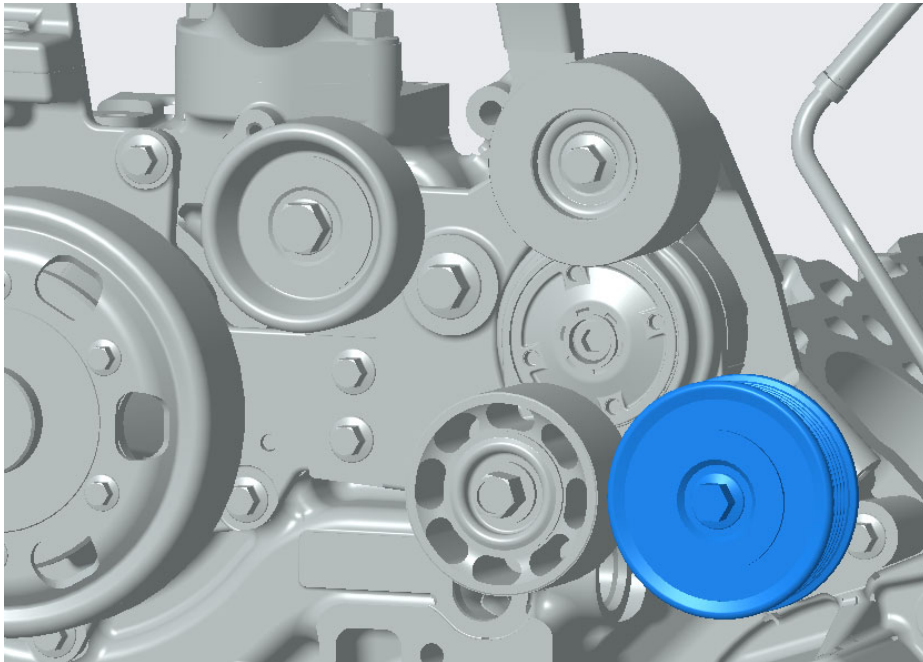
Install idler pulley assembly 4390737 (integrated capscrew). Torque: 34 N-m [25 ft-lb]



Install idler pulley assembly 5598353 (integrated capscrew). Torque: 65 N-m [50 ft-lb]



Install idler pulley assembly 5598324 (integrated capscrew). Torque: 65 N-m [50 ft-lb]

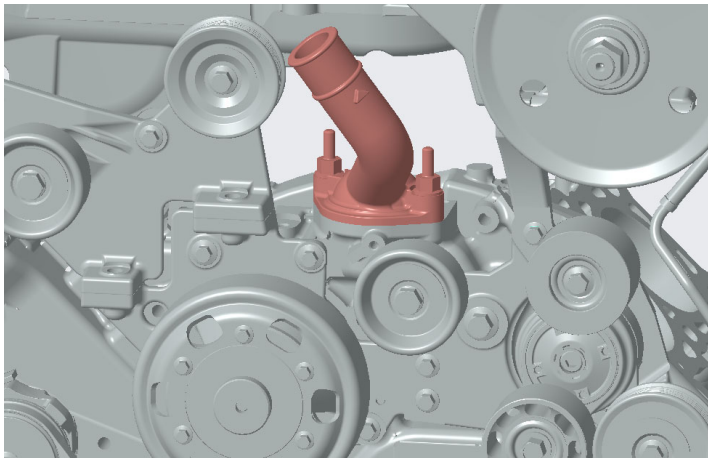


(Insert steps necessary to drain coolant so thermostat housing can be removed)

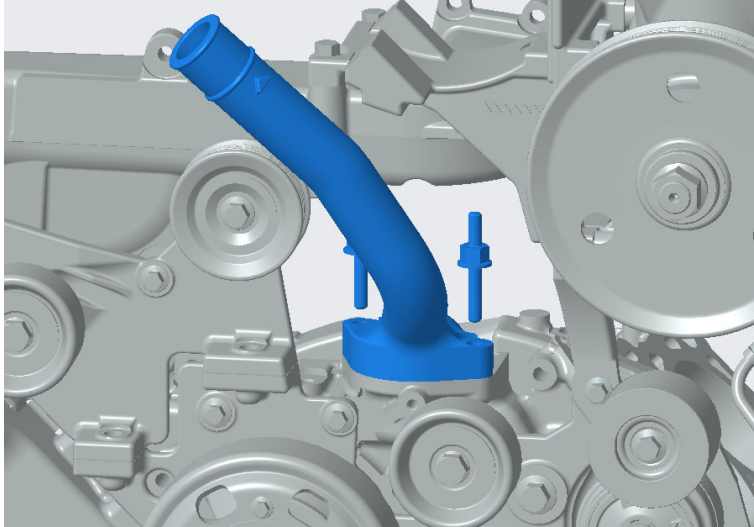
Remove the coolant hose connecting the thermostat housing to the radiator.



Remove thermostat housing 4335418. Retain capscrews (4325276). Retain thermostat.



Install thermostat into new thermostat housing 5414320. Install thermostat housing 5414320 as shown in the figure below. Use same capscrews 4325276. Refer to procedure 008-157-tr. Torque: 18 N-m [159 in-lb]



Coolant Hose Modification

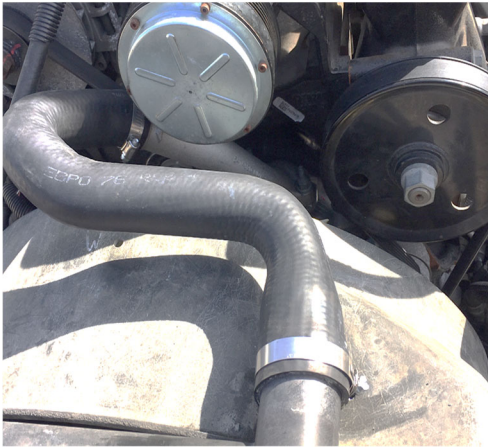
The coolant hose from the thermostat housing to the radiator must be modified to prevent kinking with the new design. Please follow the following steps to modify the coolant hose:

1. Remove the coolant hose from the vehicle.
2. Identify the end that connects to the thermostat housing (engine side). This will be the narrower end.
3. Mark 70 mm (2.75 in) from the end using a pen or marker.
4. Use a sharp utility knife to cut the hose. Try to cut the hose perpendicular to the edge. Make sure not to remove too much. More length can be removed if it does not fit properly.

Remove 70 mm (2.75 in.) from engine side of hose

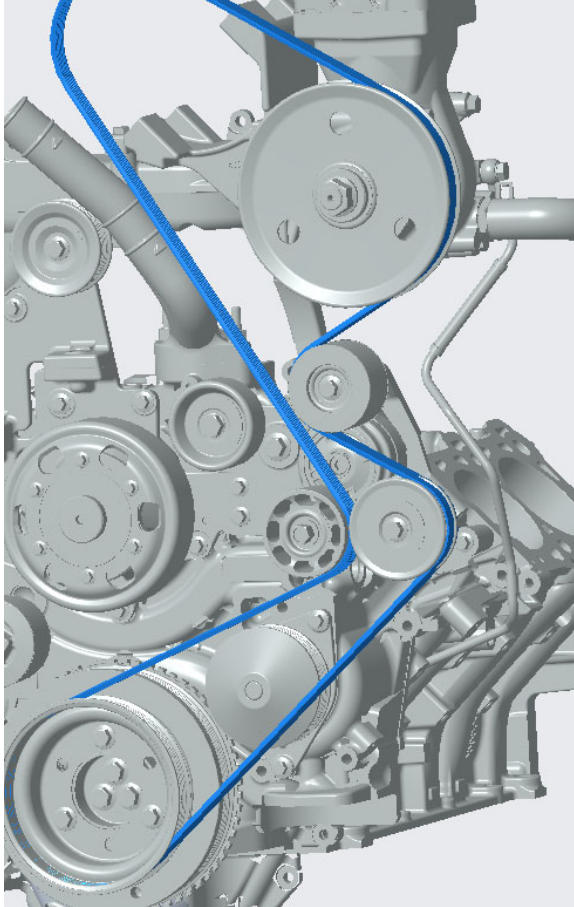


5. Check the fit of the coolant hose on the vehicle to ensure there is no kinking.



6. Reinstall coolant hose.

Install new belt 5414317. Refer to procedure 012-117-tr.



Reinstall primary drive (fan) belt. Refer to procedure 008-002-tr.