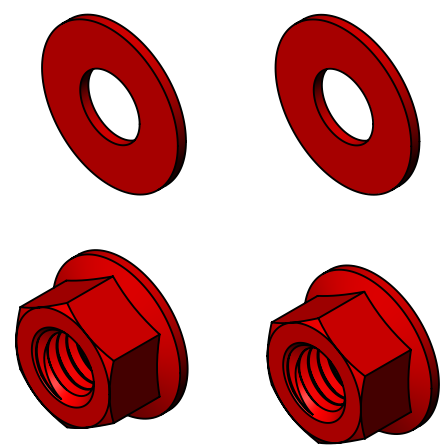
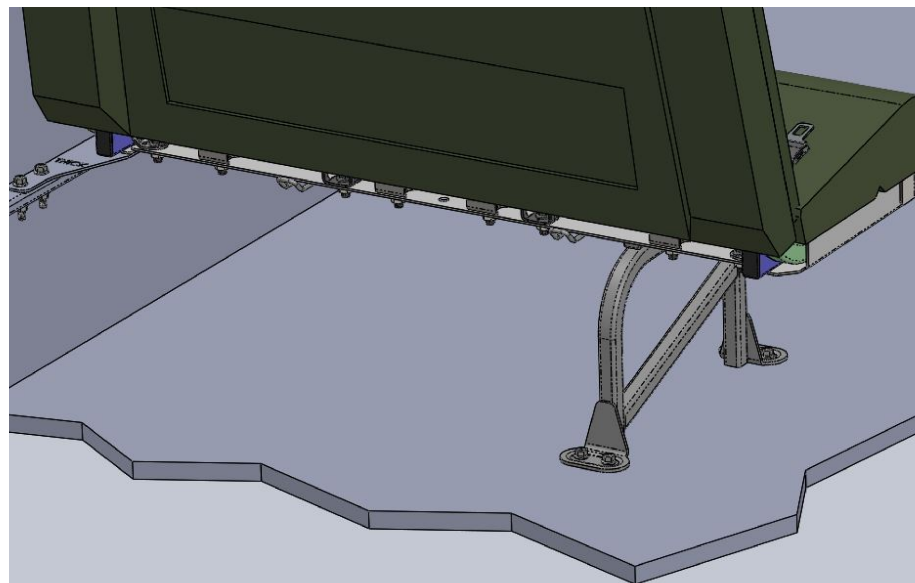


REVISIONS			
REV.	DESCRIPTION	BY	DATE
AA0	RELEASE-S07-24-2018-01	BMG	7-24-18



PARTS INCLUDED IN KIT - PN 29068
 3/8" FLAT WASHER - PN 2496686
 7/16-14 FLANGE NUT - PN 2512077

THESE INSRUCTIONS DETAIL THE PROCEDURE FOR INSTALLING WASHERS TO THE REAR 2 ATTACHMENT BOLTS OF 45" S3B RESTRAINT SEATS ONLY.

TWO PEOPLE ARE REQUIRED FOR THIS PROCEDURE.

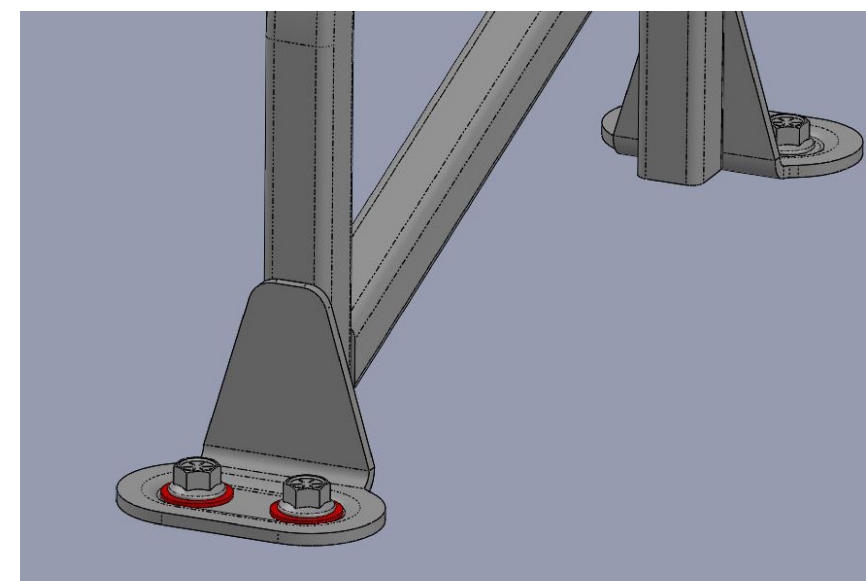
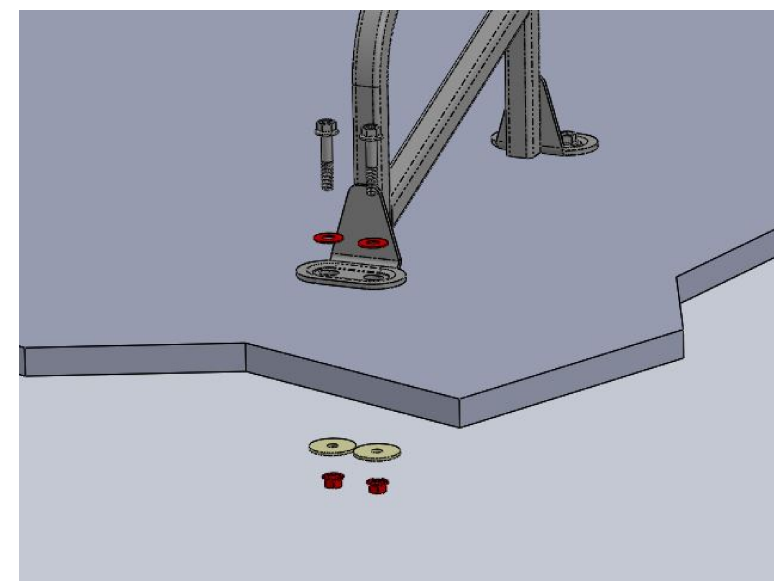
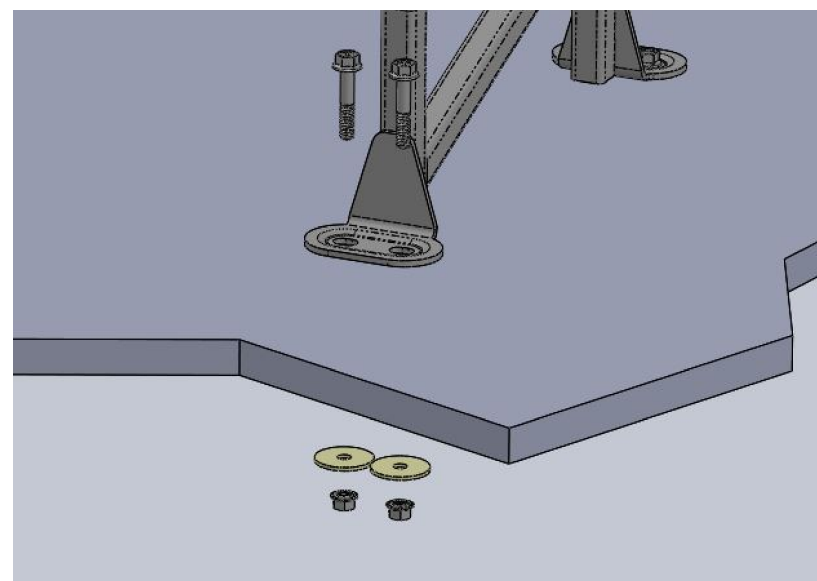
RECOMENDED TOOLS:

9/16" COMBINATION WRENCH

3/8" DRIVE RATCHET WITH 9/16" DEEP WELL SOCKET

3/8" DRIVE TORQUE WRENCH CAPABLE OF 14 FT/LB

AEROSOL SPRAY RUBBERIZED UNDERCOATING.



THIS PRODEDURE REQUIRES ONE PERSON INSIDE THE VEHICLE AND ONE UNDERNEATH.

REMOVE 2 REAR BOLTS,NUTS AND UNDER-FLOOR HARDWARE.

SOME SEATS HAVE ADDITIONAL REINFORCEMENT BRACKETS UNDER THE FLOOR.

DISCARD THE 2 NUTS, SAVE ALL OTHER HARDWARE.

RE-INSTALL ALL HARDWARE WITH 3/8" WASHER UNDER THE HEAD OF THE BOLT AND NEW FLANGE NUTS FROM KIT PN 29068(SHOWN IN RED).

INCLUDE ANY REINFORCEMENT BRACKET AND WASHERS THAT WERE PREVIOUSLY INSTALLED UNDER THE FLOOR.

TORQUE BOLTS TO 14 FT/LBS. SPRAY AREA UNDER THE FLOOR WITH RUBBERIZED UNDERCOATING.

		PART NO: 29056-AA
PART TITLE: S3B-45 RESTRAINT-REAR FOOT WASHER FIELD FIX INSTALL INSTRUCTIONS		DWG NO: 29056-AA0
MATL:	REV:	DR BY: BMG DATE: 7-24-18
		CHKD BY: DATE:
		SCALE: 1:2 SIZE: B

ENGLISH ALL DIMENSIONS IN INCHES LINEAR .XX +/- .02 .XXX +/- .005 UNLESS OTHERWISE NOTED	ANGULAR X +/- .5 .X +/- .1	UNLESS OTHERWISE SPECIFIED: 1.THE MATH DATA IS THE MASTER FOR THESE PARTS. DIMENSIONS AND THEIR SIGNIFICANT DIGITS NOTED ON THIS DRAWING ARE TO DESIGNATE THE TOLERANCING FOR A DIMENSION, BUT MAY NOT SHOW AN ACCURATE NOMINAL. FOR EXAMPLE: A DIMENSION OF .36" MAYBE SHOWN AS .4" ON THIS DRAWING - ALL PHYSICAL MEASUREMENTS MUST BE TAKEN WITH .36" AS THE NOMINAL
--	----------------------------------	--