



# IMPORTANT SAFETY RECALL

**Mitsubishi Motors North America, Inc.**

6400 Katella Avenue  
Cypress, CA 90630  
Telephone: 714-372-6000  
www.mitsubishicars.com

This notice applies to your vehicle, \_\_\_\_\_.

Date: September 2018

Dear FIRSTNAME LASTNAME,

This notice is sent to you in accordance with the National Traffic and Motor Vehicle Safety Act.

**Reason for notice:** Mitsubishi Motors North America, Inc. (MMNA) has decided that certain 2018-2019 Outlander vehicles fail to conform to Federal Motor Vehicle Safety Standard (FMVSS) No. 110 "Tire Selection and Rims." Due to a production oversight, an incorrect rear wheel rim size was printed on the FMVSS Part 567 certification label (located at the lower portion of your vehicle's driver side B-pillar). If the wheels are replaced with those of an incorrect rim size, it can result in an increased risk of a vehicle crash.

**What you should do:** Please locate the remedy label, included with this letter, and follow the included instructions for affixing the remedy label on top of your vehicle's current Part 567 certification label. If you are uncomfortable with following the included instructions for affixing the remedy label, please contact your local Authorized Mitsubishi Motors dealer and schedule an appointment to have the dealer affix the remedy label for you at no charge. When you bring your vehicle in, please bring the included remedy label, and show the dealer this letter.

**What your dealer will do:** If you do so require, the dealership will apply the remedy label for you at no charge.

**How long will it take?** The time needed for this repair is approximately **5 minutes**.

If you experience any problem having your vehicle repaired promptly and/or at no charge, please inform us by calling the Mitsubishi Customer Relations Department at **888-648-7820**. Hours: Monday through Friday 7 a.m. to 4 p.m. (Pacific Time)

If, after contacting Mitsubishi Customer Relations, you still have a problem getting this repair made promptly and/or without charge, you may submit a complaint to the Administrator, National Highway Traffic Safety Administration, 1200 New Jersey Avenue SE, Washington, D.C. 20590, or call the toll-free Vehicle Safety Hotline at 1-888-327-4236 (TTY: 1-800-424-9153), or go to <http://www.safercar.gov>.

**If you are the lessor of this vehicle**, please forward a copy of this notice to the lessee within ten days to comply with federal regulations.

We appreciate your prompt attention to this matter.

Sincerely,

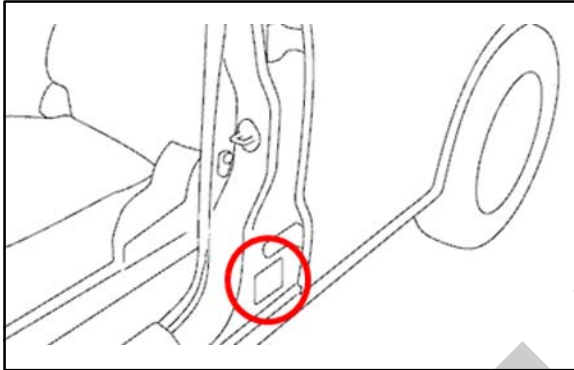
Mitsubishi Motors North America, Inc.

C1808R

## REQUIRED EQUIPMENT

- Clean cloth
- Isopropyl (rubbing) alcohol
- Painter's tape or equivalent (removable masking tape)

## LABEL INSTALLATION PROCEDURE



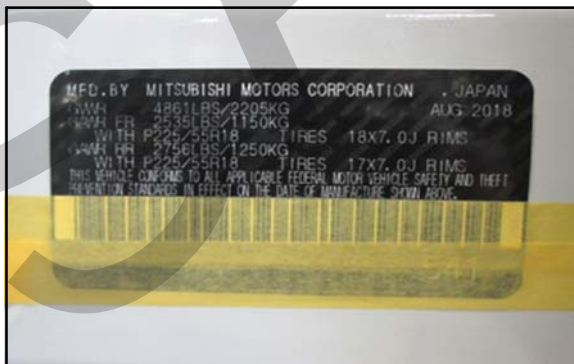
1. Open the driver's door and locate the certification label.



**Do NOT** use a denatured alcohol or any other higher solutions of alcohol.



2. Gently clean and dry the surface of the original label with isopropyl alcohol and a clean cloth.

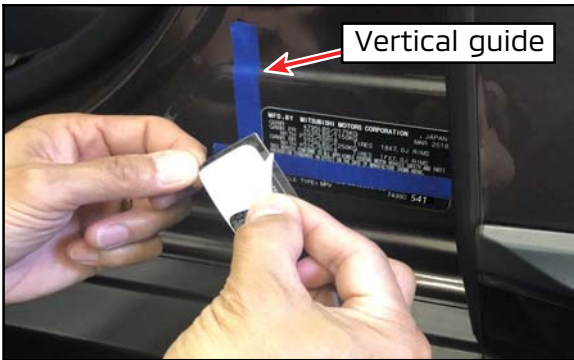


3. Place a piece of painter's tape (or equivalent) over the top of the bar code to use as a horizontal guide for positioning the overlay label.

**Note:** Another piece of painter's tape may be used along the left edge of the label as a vertical guide, if desired.



**Do NOT** cover any part of the label above the bar code.



4. Carefully remove the backing of the overlay label.

Be careful **NOT** to touch the adhesive side of the label. The adhesive will lose effectiveness if it is touched.



5. Apply the overlay label onto the original label.

**IMPORTANT:** Ensure the overlay label is properly positioned before allowing contact with the original label.

If the overlay label is not properly positioned or damaged, contact the Mitsubishi Customer Relations Department at 888-648-7820 for a new label.



- a. Carefully align the overlay label with the vertical edge of the original label (or vertical painter's tape guide if used) and the top edge of the horizontal painter's tape guide, as shown.
- b. Once the overlay label is properly positioned, use your thumb to work out any air-bubbles or creases, starting from the bottom edge to the top edge.



6. Remove the painter's tape carefully.
7. Close the driver's door to complete the procedure.