



210 Inverness Center Drive
Birmingham, AL 35242

Telephone: 205-991-7733
Facsimile: 205-991-9993
www.altec.com

IMPORTANT SAFETY RECALL

This notice applies to your vehicle. See attached serial number list.

NHTSA Safety Recall No. 18V-0036

January 30, 2018

Dear Altec Owner,

This notice is sent to you in accordance with the National Traffic and Motor Vehicle Safety Act, and Canada Motor Vehicle Safety Act.

Altec Industries, Inc. has decided that a defect which relates to motor vehicle safety exists in certain AC40 Crane Units. These units have incorrect lift capacities in the load moment and area protection (LMAP) monitor. Incorrect lift capacities can possibly cause the unit to become unstable resulting in death or serious injury.

Refer to CSN 673 for the items covered under the warranty policy. Altec will supply, free of charge, necessary software to correct this condition.

In order to determine if your unit is affected by CSN 673, compare the serial number of your unit with the list of affected units attached to the CSN. The repair can be performed by the customer or you may contact Altec at 1-877-GO-ALTEC (1-877-462-5832) for further assistance. The repair is expected to take one hour to complete.

At any time, you may contact Altec at 1-877 GO ALTEC (1-877-462-5832) with your unit's serial number to determine if there are any other outstanding notices.

For US owners: after contacting Altec, if you are still not able to have the safety condition remedied within a reasonable time, you may write to: Administrator, National Highway Traffic Safety Administration, 1200 New Jersey Avenue SE, Washington, DC 20590 or call 1-888-327-4236 (TTY: 1-800-424-9153) or go to <http://www.safercar.gov>.

For Canadian Owners: if you are still not able to have the safety condition remedied by your dealer within a reasonable time, please contact Altec Customer Service at 1-877-GO-ALTEC (1-877-462-5832).

If you had this repair performed before you received this letter, you may be eligible to receive reimbursement for the cost of obtaining a pre-notification remedy of the problem associated with this recall. If you have sold or retired the unit please call Altec at 1-877-GO-ALTEC (1-877-462-5832) so the records may be changed.

If you have leased this equipment to another person or company, you are required by Federal Law to forward a copy of this notice to the lessee by first class mail within ten (10) days of the receipt of this notice.

We are sorry to cause this inconvenience; however we are taking this action in the interest of your safety and continued satisfaction with Altec products.

Thank you for your immediate attention on this important matter.

Customer Service Notice

Date: January 30, 2018

Units Affected: AC40-152S Cranes built between serial number 0214GA0103 (February 2014) through 0617GA0227 (June 2017) (see attached list)

LMAP Software Update

Altec is committed to providing our customers with safe and reliable products from initial delivery throughout the useful life of the machine.

Altec has discovered that there is an error in the software programming of the LMAP that shows more unit capacity in some situations than the unit is capable of handling safely. On the AC40-152S Mid-Span load chart, the LMAP load chart value indicates a capacity of 9,350 lbs at a 77ft boom length and at a boom angle of 45 degrees. The correct load chart capacity shown on the Range and Capacity Chart at the operator’s station with a capacity of 3,950 lbs. Using the information shown on the LMAP can result in instability of the unit. **Death or serious injury can result if the unit becomes unstable.**

Operators must use the range diagram and load chart (refer to Figure 1) at the operator’s station for the correct lift capacities when using the unit. The LMAP is to be an aid to the operator during use of the unit but should not be the primary source for the range and capacity information.

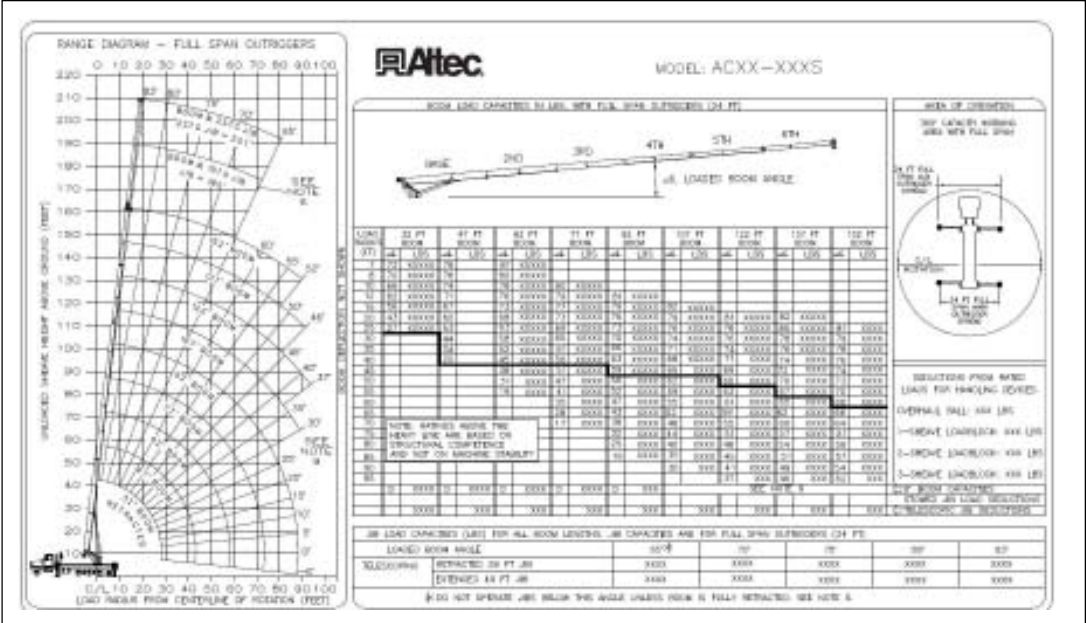


Figure 1 — Sample Range and Capacity Diagram

Altec will supply an LMAP software update for the affected units. The update can be installed at the next scheduled maintenance interval but no later than 60 days after the receipt of this CSN.

Order LMAP Capacity Update Kit, part number 990101129, by calling 1-877-GO ALTEC (1-877-462-5832). The kit includes a flash drive, cable and instructions for the update.

This repair is covered under the Altec Warranty Policy and can be performed by Altec, the customer, or the customer's warranty provider. Altec will allow up to \$90 for the labor to perform this repair. A warranty claim must be submitted to be reimbursed for the cost of the parts and/or labor. Call 1-877-GO ALTEC (1-877-462-5832) to schedule the work to be done by an Altec service technician. Customers are responsible for the travel costs of an Altec Mobile Service technician if the technician performs the inspection or repair at the owner's location.