



MERCEDES-BENZ USA, LLC  
One Mercedes-Benz Dr.  
Sandy Springs, GA, 30328-4201  
Phone: (770) 705-0600  
Fax: (770) 705-0117  
MBUSA.com

Service

# newschannel update

TO: Mercedes-Benz Dealer Principals, General Managers, Sales Managers, Service Managers, Parts Managers	FROM: Gregory Gunther, Department Manager, Vehicle Compliance and Analysis, Engineering Services
RE: <b>Recall Campaign Launch Notification</b> <b>2018070012</b> <b>Check Rear Beltline Trim – Phase 2</b> <b>MY17-18 A205 (C-Class Cabriolet)</b>	DATE: September 14, 2018

## IMPORTANT NEW RECALL CAMPAIGN LAUNCH INFORMATION





# RECALL CAMPAIGN LAUNCH NOTIFICATION

September 14, 2018

<b>Campaign No. :</b>	<b>Campaign Desc. :</b>	<b>Check Rear Beltline Trim – Phase 2</b>
<b>2018070012</b>	<b>1806P72C06</b>	
<p>This is to notify you of the <b>Recall Campaign Phase 2 Launch</b> to check the rear beltline trim on an additional <b>10,557</b> MY 2017-2018 Model A205 (C-Class) cabriolet vehicles. The recall campaign will be visible on the <a href="http://www.safercar.gov">www.safercar.gov</a> website and may generate questions from customers. Affected VINs will be flagged in VMI as “OPEN” on September 14, 2018.</p> <p><b>Please note that we previously advised of the Phase 1 Launch of this recall campaign. This is the second and final phase of the recall which involves a total population of 10,832 vehicles. All VINs will be flagged in VMI as OPEN on September 14, 2018.</b></p>		
<b>Background</b>		
<b>Issue</b>	Daimler AG (“DAG”), the manufacturer of Mercedes-Benz vehicles, has determined that on certain C-Class Cabriolet (A205 platform) vehicles, bonding for the rear beltline trim may not meet current production specifications, which may cause the trim to separate, increasing the risk of injury or a crash.	
<b>What We’re Doing</b>	MBUSA will conduct a voluntary recall. An authorized Mercedes-Benz dealer will check the trim and, replace it if necessary, for the affected vehicles.	
<b>Parts</b>	<b>A limited supply of parts are available to support the anticipated 1% replacement rate. <u>Do not order parts until the check has been carried out.</u></b>	
<b>Vehicles Affected</b>		
<b>Vehicle Model Year(s)</b>	2017, 2018	
<b>Vehicle Model</b>	C-Class	
<b>Vehicle Populations</b>		
<b>Phase 2 Launch Population</b>	10,554	
<b>Total Recall Population</b>	10,829	
<b>Total Vehicles in Dealer Inventory</b>	155	
<p><b>Given this notice, it is a violation of Federal law for a dealer to sell or lease any new MY17 or 18 C-Class Cabriolet vehicles in dealer inventory covered by this notification until the vehicle has been repaired. Once the remedy is available, the vehicles will be flagged as “OPEN” and Work Instructions will be available in Star TekInfo Once the repair is complete, the vehicle may be sold or leased.</b></p> <p><b>Loaner and demonstrator vehicles may continue to be driven, but must not be retailed until repaired.</b></p> <p><b>Additionally, given this notice, it is a violation of Federal Law for car rental companies to rent new MY17 or 18 C-Class cabriolet vehicles covered by this notification until the vehicle has been repaired.</b></p>		
<b>Next Steps/Notes</b>		
<b>Customer Notification Timeline</b>	Customer letters will be mailed on September 21, 2018.	
<b>AOMS/SOMS</b>	AOMs – This recall may generate questions from your dealers. Please forward this notice to your dealers ASAP.	
<b>Rental Fleet Partners</b>	This recall may affect vehicles in your fleet. Please contact your respective MBUSA fleet representative for further information and next steps. For repairs, please contact your preferred MBUSA dealer.	
<p>While we regret any inconvenience this may cause, MBUSA is determined to maintain a high level of vehicle quality and customer satisfaction. Please refer all customer inquiries to the Customer Assistance Center at 1-800-FOR-MERCEDES.</p>		



Mercedes-Benz

Campaign No. 2018070012, September 2018

TO: ALL MERCEDES-BENZ CENTERS

SUBJECT: **Model: C-Class Cabriolet (A205 platform) Model Years: 2017-2018**  
**Check Rear Beltline Trim**

Daimler AG ("DAG"), the manufacturer of Mercedes-Benz vehicles, has determined that on certain C-Class Cabriolet (A205 platform) vehicles, bonding for the rear beltline trim may not meet current production specifications, which may cause the trim to separate, increasing the risk of injury or a crash. An authorized Mercedes-Benz dealer will check the trim and replace it if necessary for the affected vehicles.

Prior to performing this Recall Campaign:

- Please check VMI to determine if the vehicle is involved in the Campaign and if it has been previously repaired.
- Please review the entire Recall Campaign bulletin and follow the repair procedure exactly as described.

Please note that Recall Campaigns **do not expire** and may also be performed on a vehicle with a vehicle status indicator.

Approximately 10,829 vehicles are involved.

Order No. P-RC-2018070012

This bulletin has been created and maintained in accordance with MBUSA-SLP S423QH001, Document and Data Control, and MBUSA-SLP S424HH001, Control of Quality Records.

### Check procedure

1. Check sealing rail with trim element on both left and right rear side windows.

**i** To do so, pull trim element (**A, Figure 1**) upwards.

**i** The bonding between the trim element and plastic basic carrier rail may become detached (**Figure 2**).

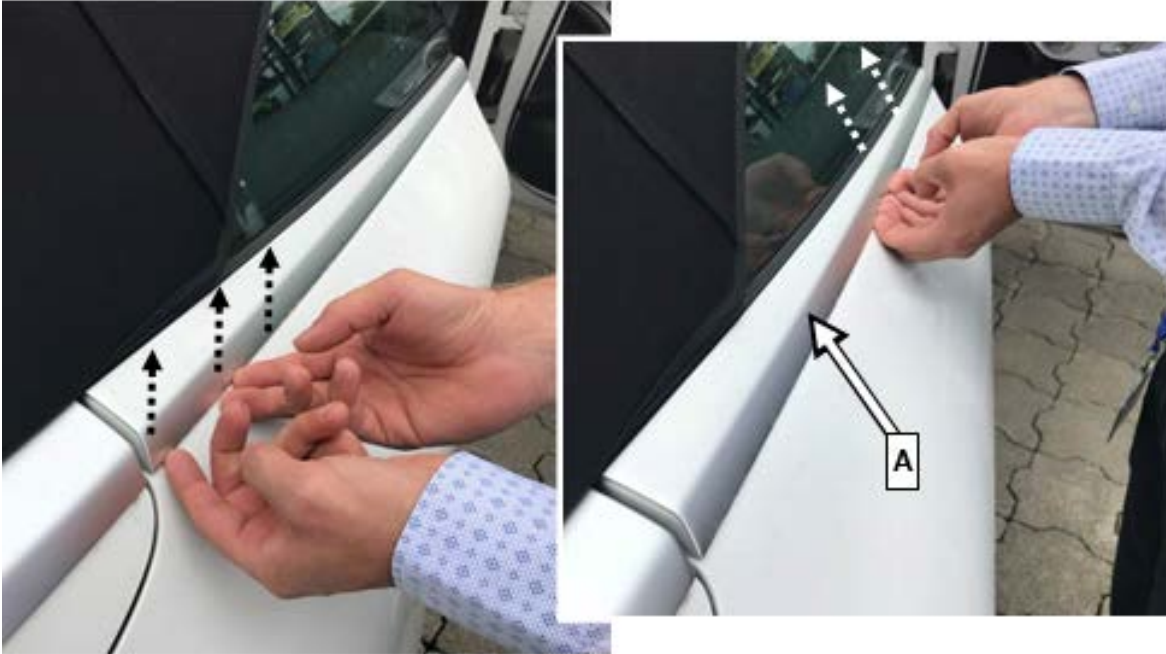


Figure 1



Figure 2

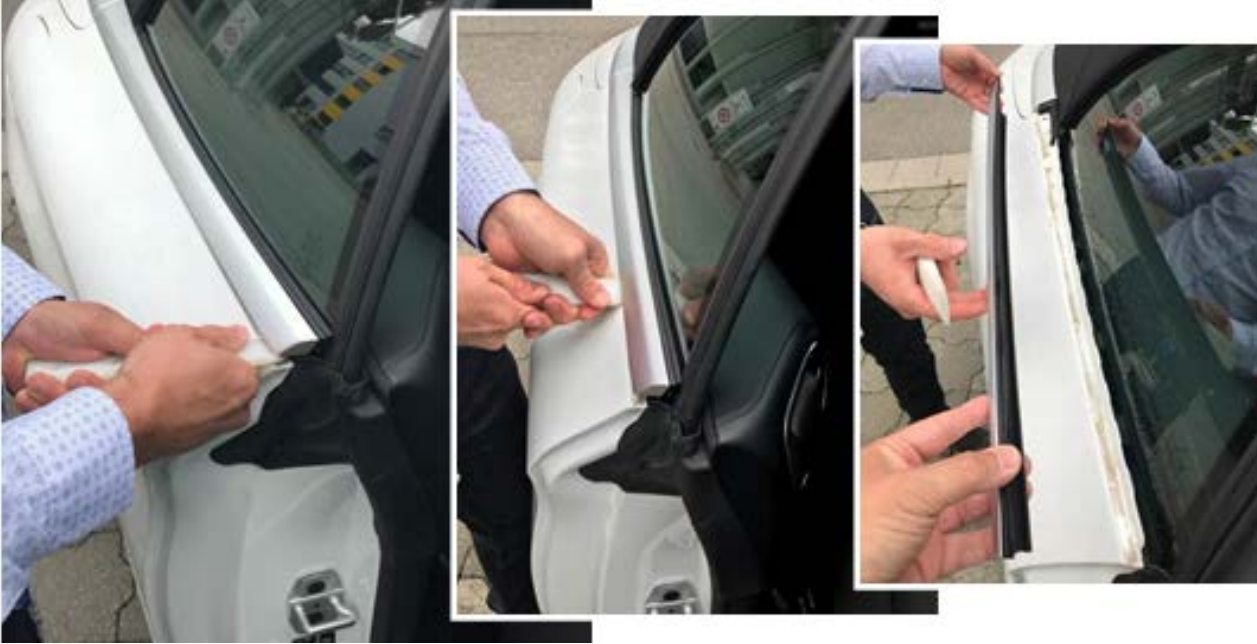
- a. Trim element can be detached from the plastic basic carrier rail: Perform **work procedure**.
- b. Trim element **cannot** be detached from plastic basic carrier rail: **End measure**.

**i** The **findings** from the check/test procedure must be documented **on the work order**.

**Work procedure**

1. Replace affected rear sealing rail trim element.

**i** It is not necessary to open the soft top.



**Figure 3**



**Figure 4**

**Primary Parts Information**

Qty.	Part Name	Part Number	Estimated Replacement Rate
As required*	Left sealing rail	A 205 670 29 01	2%
As required*	Right sealing rail	A 205 670 30 01	2%
As required*	Left sealing rail	A 205 673 03 65 2B53	2%
As required*	Right sealing rail	A 205 673 04 65 2B53	2%

\*Determine sealing rail required based on chassis number in the EPC.

**Warranty Information****With check**

**Operation:** Check sealing rail on side window at rear left and right (02-2411)

Damage Code	Operation Number	Labor Time (hrs.)
72 911 37 8	02-2411	0.1

**With check and repair**

**Operation:** Check sealing rail on rear side window left and right (02-2411)  
Replace sealing rail on rear side window (this operation maybe used on each side)(02-2412)

Damage Code	Operation Number	Labor Time (hrs.)
72 911 37 7	02-2411	0.1
	02-2412	0.1

** Note**

Operation Number labor times are subject to change.