

Recall Bulletin 180322REV



RECALL BULLETIN:
180322REV

YEAR(S) AFFECTED:
2017-2018

PRODUCT(S) AFFECTED:

American Coach brand:
American Dream,
American Eagle,
American Revolution;

Fleetwood brand:
Axon, Bounder,
Discovery, Flair,
Jamboree Pace Arrow,
Pace Arrow LXE, Pulse,
Southwind, Storm;

Holiday Rambler brand:
Admiral XE, Endeavor,
Endeavor XE, Navigator,
Navigator XE, Prodigy,
Reno, Scepter,
Vacationer, Vacationer
XE, Vesta;

Monaco brand:
Diplomat, Marquis

Affected vehicles were
manufactured after
7/10/2016 and shipped
through 3/27/2018, and
equipped with a King
Tailgater Satellite

MODEL(S)

AFFECTED:
All equipped with
Option 96, King
Tailgater Stationary
Satellite System

SUBJECT:
Correction of
Satellite Dish
Mounting

KEYWORDS:
Satellite, Dish

ISSUE DATE:
May 2018

The purpose of this Recall Service Bulletin is to provide the instructions necessary to resecure the King Tailgater stationary satellite dish to the roof. A list of affected vehicle serial numbers appears at the end of this Bulletin.

CONDITION:

On motorhomes affected by this recall, the Tailgater satellite dish was not properly secured to the roof and may come loose or detach. If the satellite dish detaches from the roof, it could present a road hazard, which may result in personal injury and/or property damage.

CORRECTION PROCEDURE:

Follow the steps below to properly secure the satellite dish to the roof.

Dealers will be required to submit a claim (authorization request) for Prior Authorization (PAR) before beginning any work. Read the entire procedure carefully and heed all safety precautions. If there are any questions after reviewing the entire procedure, contact REV Dealer Technical Support.

Fleetwood Dealer Technical Support: (800) 816-9825

Holiday Rambler Dealer Technical Support: (877) 332-9239

1. Park the motorhome on dry, level pavement, in an area where the roof can be accessed. Place the transmission into PARK and set the parking brake. Turn off the ignition and remove the ignition key. Maintain control of keys while work is performed.



CAUTION

ALWAYS USE FALL PROTECTION WHEN WORKING ON THE ROOF OF A COACH.

2. Block wheels to prevent movement.
3. Use a ladder to access the roof. Bring along 1 tube of white Dicor 502-LSW Self-Leveling sealant, one recall parts kit, and tools. See TOOLS and PARTS lists on Page 4 for detailed specifications.
4. Locate the King Tailgater satellite dish on the roof. See Figure 1 for reference.

NOTE: If the satellite dish has come loose or detached, or is a different brand, contact REV Dealer Technical Support for assistance and Prior Authorization before proceeding with further repairs.



Figure 1

© 2018 REV Recreation Group, Inc.

This bulletin is supplied for technical information only and is not an authorization for repairs.

Federal law (section 154 of the national traffic and motor vehicle safety act of 1966) requires that: If you have received a notice of recall or failure to comply from REV Recreation Group or any component Manufacturer, you must repair or otherwise correct the defects on vehicles remaining in your inventory, according to the notification, before selling or leasing the vehicles. Any vehicle lessor receiving this recall notice must forward a copy of the notice to the lessee within ten days.

"It is impossible to know, evaluate and advise the service trade of all conceivable ways in which service might be done or of the possible hazardous consequences of each way. Accordingly, anyone who uses a service procedure or tool must first assure that neither personal safety nor vehicle safety will be jeopardized by the selected service methods."



CAUTION

USE CARE TO AVOID DAMAGING THE ROOF RUBBER.

5. Locate the four satellite dish mounting screws under the self-leveling roof sealant by carefully peeling away the sealant with a putty knife. Remove each screw using a 1/4" hex head socket bit or Phillips bit in a cordless driver. Discard the original screws. See Figure 2 for reference.
6. Locate four new, 1 1/2" x 2 1/2" x 1/8" thick aluminum mounting brackets, supplied with the Recall Kit. Refer to Figure 3 for reference. Coat one side of one of the brackets with Dicor 502-LSW Self-Leveling Sealant. Refer to Figure 4 for sealant application. See Parts List on Page 4 for sealant and kit part numbers.
7. Using a putty knife or flat screwdriver, carefully pry up the dome and insert one of the aluminum brackets, sealant side down, under the dome's mounting foot. Sealant should seep through all three of the holes in the bracket.

Note: Align the sealant, seeping through the smallest hole in the bracket, with the center of the hole left by the original mounting screw. This will make installing the new screw easier.

When the new bracket is positioned properly, its smallest hole should be centered with the original screw hole, and its two larger holes will be on the outside of the dome. See Figure 5.

Remove the putty knife or flat screwdriver so that the dome rests directly on the bracket and roof.

8. To keep the bracket stationary while installing the screw, use a 13/64" drill to "match drill" one of the rivet holes, using one of the larger holes in the bracket as a guide. Insert a new rivet (included with the kit) into the hole.

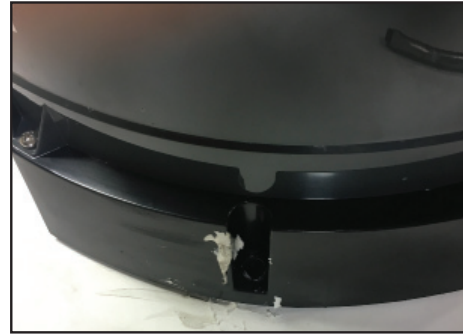


Figure 2

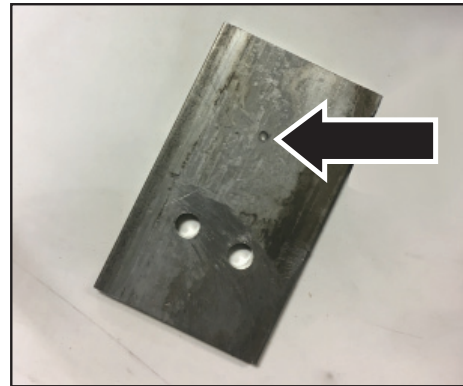


Figure 3



Figure 4

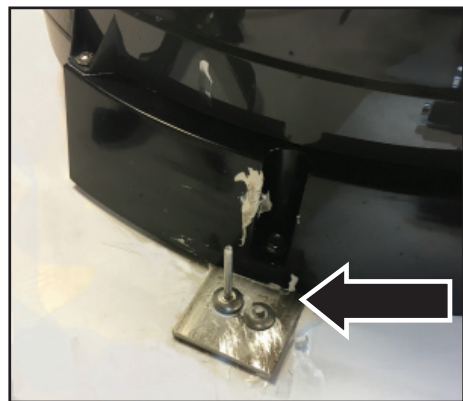


Figure 5

This bulletin is supplied for technical information only and is not an authorization for repairs.

Federal law (section 154 of the national traffic and motor vehicle safety act of 1966) requires that: If you have received a notice of recall or failure to comply from REV Recreation Group or any component Manufacturer, you must repair or otherwise correct the defects on vehicles remaining in your inventory, according to the notification, before selling or leasing the vehicles. Any vehicle lessor receiving this recall notice must forward a copy of the notice to the lessee within ten days.

"It is impossible to know, evaluate and advise the service trade of all conceivable ways in which service might be done or of the possible hazardous consequences of each way. Accordingly, anyone who uses a service procedure or tool must first assure that neither personal safety nor vehicle safety will be jeopardized by the selected service methods."



CAUTION

DO NOT DRILL ALL THE WAY THROUGH THE ROOF.

9. Using a ¼” hex head socket bit in a cordless driver, insert a new screw (included with the kit) into the hole left by the original screw. Tighten to secure.
10. Use a 13/64” drill to “match drill” a hole for the second rivet. Insert a rivet into the hole.
11. Using a hand-held or pneumatic rivet gun, pop both rivets until the stem snaps off. As required, use a pair of side cutters to cut off the stem flush with the top of the rivet.
12. Cover the screw, mounting foot, sides of the mounting foot, and the entire aluminum bracket with Dicor 502-LSW Self-Leveling Sealant (see Parts list).
13. Repeat Steps 6-12 for the remaining three satellite dome mounting foot locations.

See next page for tool and part requirements, and for warranty labor time allowances.

This bulletin is supplied for technical information only and is not an authorization for repairs.

Federal law (section 154 of the national traffic and motor vehicle safety act of 1966) requires that: If you have received a notice of recall or failure to comply from REV Recreation Group or any component Manufacturer, you must repair or otherwise correct the defects on vehicles remaining in your inventory, according to the notification, before selling or leasing the vehicles. Any vehicle lessor receiving this recall notice must forward a copy of the notice to the lessee within ten days.

"It is impossible to know, evaluate and advise the service trade of all conceivable ways in which service might be done or of the possible hazardous consequences of each way. Accordingly, anyone who uses a service procedure or tool must first assure that neither personal safety nor vehicle safety will be jeopardized by the selected service methods."

TOOLS

- Caulk gun for sealant
- Putty knife or flat blade screwdriver, 3/8" wide
- 13/64" drill bit
- Cordless driver with 1/4" hex head socket bit and Phillips head driver bit
- Fall protection harness
- Hand held or pneumatic rivet gun
- Ladder
- Side cutters
- Wheel chocks

PARTS

<u>Part Number</u>	<u>Description</u>	<u>Quantity</u>
10032598 (or obtain locally)	Dicor 502-LSW Self-Leveling Sealant, White	1 tube
10506417 (purchase from REV required)	Kit, Recall 180322REV, Satellite Mounting	1 ea

Kit Contains:

- Bracket, 1 1/2" x 2 1/2" x 1/8" (Fabricated from Aluminum), qty. 4*
- Screw, Tek #8 x 1" HWH Pltd, qty. 4*
- Rivet, 3/16" x 3/8" low pro HDMagna-Tite Alum, qty. 10*

Note: 2 extra rivets are included with each kit.

WARRANTY LABOR ALLOWANCE:

Recall 180322REV, Satellite Dish Mounting
Use flat rate codes:

6075 - 11	Inspected/Not Defective	0.20 hr.	Prior Authorization Required
6075 - 12	Inspected/Defective/Repaired	0.50 hr.	Prior Authorization Required

If you have any questions concerning this bulletin, contact REV Dealer Technical Support:

Fleetwood Dealer Technical Support: (800) 816-9825
Holiday Rambler Dealer Technical Support: (877) 332-9239

Service Literature is available at: <https://www.revrdealers.com>

This bulletin is supplied for technical information only and is not an authorization for repairs.

Federal law (section 154 of the national traffic and motor vehicle safety act of 1966) requires that: If you have received a notice of recall or failure to comply from REV Recreation Group or any component Manufacturer, you must repair or otherwise correct the defects on vehicles remaining in your inventory, according to the notification, before selling or leasing the vehicles. Any vehicle lessor receiving this recall notice must forward a copy of the notice to the lessee within ten days.

"It is impossible to know, evaluate and advise the service trade of all conceivable ways in which service might be done or of the possible hazardous consequences of each way. Accordingly, anyone who uses a service procedure or tool must first assure that neither personal safety nor vehicle safety will be jeopardized by the selected service methods."