

TO: All Dealer Principals, Service Managers and Parts Managers

Subject: 2100 Series Hoist Cylinder Safety Recall

Number: SB 0308 rB **Date:** 09/22/2020

NOTICE



Follow recommended safety practices while performing all work. Refer to the FS Solutions/Guzzler/Vactor/TRUVAC/Westech Safety Manual for additional information.

This manual is available at: www.vactor.com

PURPOSE:

Some hoist cylinders used on the 2100 series units have been reported to have failed due to corrosion. Excessive corrosion can result in the hoist cylinder's last stage rod end separating from the cylinder rod. The failure would result in loss of the body lift/lower function and could allow the body to tip rearward. This bulletin provides a list of the model 2100 serial numbers that may have a hoist cylinder affected by the recall, and the procedure for replacement.

Operational procedures for dumping, cleaning and decanting are included for reference.

UNITS TO SERVICE:

See the truck serial number list on the following pages. Verify the part number and date code located near the top of the cylinder. If the date code is equal or later than the date shown in the chart below the cylinder is NOT included in the recall.

Prince P/N	Vactor P/N	Date Code
BN-0337	45658L-30	170227
BN-0336	45977G-30	170302
BP-0530	45658M-30	170503
BN-0354	45658N-30	170501
BN-0354	45658I-30	170501

Note: date code 170227 = 02/27/2017

PARTS AVAILABILITY: July 15, 2020

Cylinder must be ordered and delivery verified before scheduling service work.

WARRANTY COVERAGE:

See last page

SPECIAL TOOLS:

An overhead hoist suitable to remove/install the hoist cylinder.

Dual body props - safety wedge locks are available from many truck equipment suppliers.

Buckets to collect oil, oil absorbing mats, & clean rags.

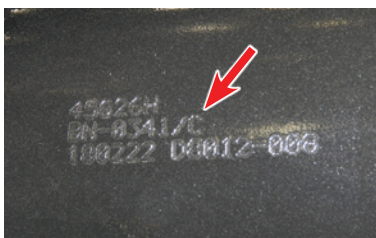
Clean hydraulic oil.



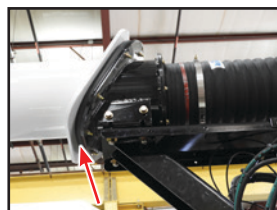
PARTS REQUIRED:

See Table below

Contact Vactor PSR group to order parts at: (877)-800-1111 Ext. 1



	2100 Series Cylinder Part Numbers			
Vactor P/N	45658L-30	45977G-30	45658M-30	45658I-30 45658N-30
New P/N	45658QA-30	45977J-30	45658PA-30	45658R-30



Note: The replacement cylinder may rub the inlet seal on trucks requiring new cylinder 45658PA-30. Use shim 512526-30 (order 3) under the inlet head gasket to raise it up and provide clearance for the cylinder in the raised position.

Part No.	Serial No.
45658I-30	11-04V-12584
45658L-30	11-05V-12597
45977G-30	11-06V-12648
45658L-30	11-06V-12658
45658L-30	11-06V-12677
45658L-30	11-07V-12686
45977G-30	11-07V-12699
45977G-30	11-07V-12702
45826G-30	11-07V-12703
45658L-30	11-07V-12709
45658I-30	11-08V-12713
45826G-30	11-08V-12716
45826G-30	11-08V-12729
45977G-30	11-08V-12743
45658L-30	11-08V-12747
45658L-30	11-08V-12749
45658I-30	11-09V-12765
45658L-30	11-09V-12768
45658L-30	11-09V-12770
45658I-30	11-09V-12773
45658L-30	11-09V-12775
45826G-30	11-09V-12777
45658L-30	11-09V-12779
45658L-30	11-09V-12782
45658L-30	11-09V-12783
45658I-30	11-09V-12785
45658L-30	11-09V-12788
45658L-30	11-09V-12789
45658I-30	11-09V-12799
45658L-30	11-09V-12802
45977G-30	11-10V-12817
45658L-30	11-10V-12818
45977G-30	11-10V-12821
45977G-30	11-10V-12822
45658I-30	11-10V-12824
45658L-30	11-11V-12833
45658L-30	11-11V-12838
45977G-30	11-11V-12848
45658L-30	11-11V-12850
45658L-30	11-11V-12853
45658L-30	11-11V-12857
45658L-30	11-11V-12860
45658M-30	11-11V-12863
45658M-30	11-11V-12868
45658L-30	11-12V-12883
45658L-30	11-12V-12884

Part No.	Serial No.
45658L-30	11-12V-12886
45977G-30	11-12V-12887
45658L-30	11-12V-12890
45977G-30	11-12V-12904
45658L-30	12-01V-12906
45658L-30	12-01V-12910
45658M-30	12-01V-12912
45977G-30	12-01V-12916
45977G-30	12-01V-12920
45977G-30	12-01V-12923
45658I-30	12-01V-12927
45977G-30	12-01V-12928
45658I-30	12-01V-12931
45658M-30	12-01V-12936
45658L-30	12-01V-12937
45658L-30	12-01V-12938
45658M-30	12-01V-12940
45658I-30	12-01V-12944
45658L-30	12-01V-12947
45658L-30	12-02V-12950
45658I-30	12-02V-12951
45658M-30	12-02V-12952
45658L-30	12-02V-12955
45658M-30	12-02V-12962
45658L-30	12-02V-12966
45658L-30	12-02V-12968
45658M-30	12-02V-12973
45658M-30	12-02V-12975
45658I-30	12-02V-12976
45977G-30	12-02V-12977
45658M-30	12-02V-12980
45658L-30	12-02V-12982
45658M-30	12-02V-12985
45658L-30	12-02V-12988
45658L-30	12-02V-12992
45658L-30	12-02V-12993
45658L-30	12-02V-12994
45658M-30	12-02V-12995
45658L-30	12-03V-13002
45658M-30	12-03V-13008
45658L-30	12-03V-13009
45977G-30	12-03V-13011
45977G-30	12-03V-13012
45658L-30	12-03V-13019
45658M-30	12-03V-13024
45658L-30	12-03V-13025

Part No.	Serial No.
45658N-30	12-03V-13026
45658M-30	12-03V-13028
45658M-30	12-03V-13029
45658I-30	12-03V-13033
45658N-30	12-03V-13035
45658N-30	12-03V-13037
45658I-30	12-03V-13041
45658I-30	12-03V-13042
45658L-30	12-03V-13045
45658L-30	12-03V-13046
45658M-30	12-03V-13047
45658M-30	12-03V-13048
45977G-30	12-03V-13049
45658L-30	12-04V-13039
45977G-30	12-04V-13066
45658L-30	12-04V-13067
45658L-30	12-04V-13068
45658L-30	12-04V-13070
45658M-30	12-04V-13071
45658M-30	12-04V-13072
45658M-30	12-04V-13074
45658L-30	12-04V-13078
45658M-30	12-04V-13079
45658L-30	12-04V-13082
45658L-30	12-04V-13083
45658M-30	12-04V-13084
45658M-30	12-04V-13085
45658L-30	12-04V-13110
45658L-30	12-04V-13112
45658L-30	12-04V-13114
45658N-30	12-04V-13115
45658L-30	12-04V-13116
45977G-30	12-04V-13117
45977G-30	12-04V-13119
45658M-30	12-05V-13086
45658L-30	12-05V-13087
45658N-30	12-05V-13089
45658L-30	12-05V-13093
45658L-30	12-05V-13095
45658L-30	12-05V-13096
45977G-30	12-05V-13101
45658L-30	12-05V-13120
45658L-30	12-05V-13138
45658M-30	12-05V-13142
45658L-30	12-05V-13143
45658L-30	12-05V-13144

Part No.	Serial No.
45658L-30	12-05V-13149
45658L-30	12-05V-13154
45977G-30	12-05V-13156
45977G-30	12-05V-13157
45658L-30	12-05V-13158
45658L-30	12-05V-13160
45658L-30	12-06V-13167
45977G-30	12-06V-13170
45658L-30	12-06V-13171
45977G-30	12-06V-13175
45658L-30	12-06V-13179
45658L-30	12-06V-13180
45658L-30	12-06V-13181
45658L-30	12-06V-13185
45658N-30	12-06V-13186
45977G-30	12-06V-13187
45658L-30	12-06V-13192
45658L-30	12-06V-13199
45658M-30	12-06V-13200
45977G-30	12-06V-13204
45658N-30	12-06V-13210
45658L-30	12-06V-13212
45977G-30	12-06V-13215
45658L-30	12-06V-13219
45658M-30	12-06V-13220
45658N-30	12-07V-13222
45977G-30	12-07V-13226
45658L-30	12-07V-13228
45977G-30	12-07V-13230
45658N-30	12-07V-13231
45658L-30	12-07V-13232
45658L-30	12-07V-13238
45977G-30	12-07V-13239
45658L-30	12-07V-13244
45658L-30	12-07V-13246
45658L-30	12-07V-13248
45658L-30	12-07V-13249
45658L-30	12-07V-13251
45658L-30	12-07V-13252
45658L-30	12-07V-13253
45658M-30	12-07V-13259
45658L-30	12-08V-13262
45658M-30	12-08V-13263
45658M-30	12-08V-13267
45658L-30	12-08V-13268
45658L-30	12-08V-13269

Part No.	Serial No.
45658L-30	12-08V-13270
45658N-30	12-08V-13272
45658N-30	12-08V-13276
45658M-30	12-08V-13277
45658L-30	12-08V-13281
45658L-30	12-08V-13286
45977G-30	12-08V-13289
45658L-30	12-08V-13290
45658N-30	12-08V-13295
45977G-30	12-08V-13296
45658L-30	12-08V-13298
45658L-30	12-08V-13300
45658N-30	12-08V-13302
45977G-30	12-08V-13305
45658L-30	12-08V-13313
45658L-30	12-08V-13314
45658L-30	12-08V-13315
45658M-30	12-08V-13316
45658L-30	12-08V-13317
45658M-30	12-08V-13318
45658M-30	12-08V-13321
45977G-30	12-08V-13322
45658L-30	12-08V-13327
45658L-30	12-09V-13331
45658M-30	12-09V-13332
45658L-30	12-09V-13336
45977G-30	12-09V-13337
45658L-30	12-09V-13339
45658L-30	12-09V-13341
45658L-30	12-09V-13345
45658L-30	12-09V-13349
45658L-30	12-09V-13350
45658L-30	12-09V-13355
45658L-30	12-09V-13356
45658N-30	12-09V-13361
45658N-30	12-09V-13366
45658N-30	12-09V-13367
45658N-30	12-09V-13368
45977G-30	12-09V-13370
45658L-30	12-09V-13374
45977G-30	12-09V-13375
45977G-30	12-09V-13381
45977G-30	12-09V-13382
45658N-30	12-09V-13383
45658L-30	12-09V-13384
45658L-30	12-09V-13385

Part No.	Serial No.
45977G-30	12-09V-13386
45826G-30	12-09V-13387
45658L-30	12-10V-13393
45977G-30	12-10V-13397
45977G-30	12-10V-13399
45658L-30	12-10V-13403
45658N-30	12-10V-13404
45977G-30	12-10V-13408
45658L-30	12-10V-13410
45658M-30	12-10V-13412
45658L-30	12-10V-13414
45977G-30	12-10V-13415
45977G-30	12-10V-13417
45658L-30	12-10V-13421
45658N-30	12-10V-13422
45658L-30	12-10V-13424
45826G-30	12-10V-13425
45658L-30	12-10V-13426
45658L-30	12-10V-13427
45658L-30	12-10V-13430
45658L-30	12-10V-13432
45658L-30	12-10V-13436
45658L-30	12-10V-13441
45658L-30	12-10V-13447
45658L-30	12-10V-13450
45977G-30	12-10V-13453
45658L-30	12-10V-13454
45826G-30	12-10V-13457
45658L-30	12-11V-13462
45658L-30	12-11V-13469
45977G-30	12-11V-13472
45826G-30	12-11V-13477
45658M-30	12-11V-13478
45977G-30	12-11V-13479
45658L-30	12-11V-13482
45658M-30	12-11V-13483
45658M-30	12-11V-13484
45658L-30	12-11V-13490
45658M-30	12-11V-13499
45658M-30	12-11V-13501
45658L-30	12-11V-13503
45658M-30	12-11V-13505
45658N-30	12-11V-13507
45658M-30	12-11V-13511
45826G-30	12-11V-13512
45977G-30	12-11V-13514

Part No.	Serial No.
45658L-30	12-12V-13520
45977G-30	12-12V-13521
45977G-30	12-12V-13522
45658L-30	12-12V-13525
45658L-30	12-12V-13533
45658L-30	12-12V-13535
45658L-30	12-12V-13537
45658L-30	12-12V-13544
45658L-30	12-12V-13547
45658L-30	12-12V-13550
45658M-30	12-12V-13551
45658L-30	12-12V-13556
45658L-30	13-01V-13566
45658L-30	13-01V-13571
45977G-30	13-01V-13573
45977G-30	13-01V-13580
45658L-30	13-01V-13582
45977G-30	13-01V-13584
45658N-30	13-01V-13588
45658L-30	13-01V-13590
45658L-30	13-01V-13591
45658L-30	13-01V-13593
45658L-30	13-01V-13595
45658L-30	13-01V-13601
45658M-30	13-01V-13603
45658M-30	13-01V-13604
45658L-30	13-01V-13607
45658L-30	13-01V-13608
45658M-30	13-01V-13611
45658L-30	13-01V-13612
45658L-30	13-01V-13614
45658L-30	13-01V-13615
45658L-30	13-01V-13617
45658L-30	13-01V-13618
45658L-30	13-01V-13620
45658L-30	13-01V-13625
45658M-30	13-01V-13629
45977G-30	13-01V-13632
45658N-30	13-01V-13634
45658N-30	13-01V-13636
45977G-30	13-01V-13649
45658L-30	13-02V-13651
45658L-30	13-02V-13657
45658L-30	13-02V-13660
45658N-30	13-02V-13661
45658L-30	13-02V-13662

Part No.	Serial No.
45658L-30	13-02V-13664
45977G-30	13-02V-13666
45658L-30	13-02V-13669
45658L-30	13-02V-13672
45977G-30	13-02V-13677
45658L-30	13-02V-13678
45658L-30	13-02V-13681
45977G-30	13-02V-13683
45658L-30	13-02V-13685
45658L-30	13-02V-13686
45658L-30	13-02V-13687
45658M-30	13-02V-13688
45658M-30	13-02V-13690
45977G-30	13-02V-13691
45658N-30	13-02V-13694
45658M-30	13-02V-13697
45658N-30	13-02V-13699
45658L-30	13-02V-13701
45977G-30	13-02V-13702
45658L-30	13-02V-13704
45658L-30	13-02V-13707
45658L-30	13-02V-13709
45658L-30	13-02V-13710
45658L-30	13-02V-13714
45658N-30	13-02V-13716
45658N-30	13-03V-13705
45658L-30	13-03V-13723
45658L-30	13-03V-13725
45658L-30	13-03V-13728
45658M-30	13-03V-13731
45658L-30	13-03V-13733
45977G-30	13-03V-13734
45658L-30	13-03V-13735
45658L-30	13-03V-13736
45658L-30	13-03V-13738
45658L-30	13-03V-13739
45658L-30	13-03V-13741
45658L-30	13-03V-13742
45658N-30	13-03V-13743
45977G-30	13-03V-13745
45658L-30	13-03V-13747
45658L-30	13-03V-13748
45658L-30	13-03V-13751
45658L-30	13-03V-13757
45977G-30	13-03V-13758
45658L-30	13-03V-13759

Part No.	Serial No.
45658L-30	13-03V-13760
45658L-30	13-03V-13762
45658L-30	13-03V-13763
45977G-30	13-03V-13765
45977G-30	13-03V-13766
45658L-30	13-03V-13768
45658L-30	13-03V-13769
45658L-30	13-03V-13773
45658L-30	13-03V-13774
45977G-30	13-03V-13775
45658L-30	13-03V-13777
45977G-30	13-03V-13779
45658L-30	13-03V-13780
45658L-30	13-03V-13783
45658L-30	13-03V-13784
45977G-30	13-03V-13785
45658L-30	13-03V-13786
45658L-30	13-04V-13790
45658L-30	13-04V-13791
45658L-30	13-04V-13792
45977G-30	13-04V-13793
45658L-30	13-04V-13795
45977G-30	13-04V-13799
45658L-30	13-04V-13800
45658L-30	13-04V-13801
45658L-30	13-04V-13802
45658L-30	13-04V-13803
45658L-30	13-04V-13804
45977G-30	13-04V-13805
45658L-30	13-04V-13806
45658L-30	13-04V-13808
45658L-30	13-04V-13809
45658L-30	13-04V-13811
45658M-30	13-04V-13812
45658L-30	13-04V-13813
45658L-30	13-04V-13816
45658L-30	13-04V-13817
45658L-30	13-04V-13818
45826G-30	13-04V-13819
45658L-30	13-04V-13820
45658L-30	13-04V-13822
45977G-30	13-04V-13823
45658M-30	13-04V-13826
45977G-30	13-04V-13827
45658L-30	13-04V-13828
45977G-30	13-04V-13829

Part No.	Serial No.
45658L-30	13-04V-13831
45658N-30	13-04V-13832
45977G-30	13-04V-13833
45658L-30	13-04V-13834
45658L-30	13-04V-13835
45977G-30	13-04V-13836
45658L-30	13-04V-13837
45977G-30	13-04V-13839
45658L-30	13-04V-13840
45658L-30	13-04V-13841
45658L-30	13-04V-13842
45658L-30	13-04V-13844
45658L-30	13-04V-13845
45658L-30	13-05V-13848
45658L-30	13-05V-13850
45658N-30	13-05V-13851
45658L-30	13-05V-13855
45658L-30	13-05V-13856
45658N-30	13-05V-13857
45658L-30	13-05V-13858
45658L-30	13-05V-13860
45658L-30	13-05V-13861
45658L-30	13-05V-13863
45658M-30	13-05V-13864
45658L-30	13-05V-13865
45658L-30	13-05V-13867
45658M-30	13-05V-13868
45658M-30	13-05V-13870
45977G-30	13-05V-13871
45826G-30	13-05V-13872
45658L-30	13-05V-13874
45658L-30	13-05V-13875
45658L-30	13-05V-13877
45658M-30	13-05V-13878
45658L-30	13-05V-13879
45658L-30	13-05V-13880
45658L-30	13-05V-13881
45658L-30	13-05V-13883
45658L-30	13-05V-13884
45658L-30	13-05V-13887
45658L-30	13-05V-13888
45658M-30	13-05V-13891
45658L-30	13-05V-13892
45658L-30	13-05V-13893
45977G-30	13-05V-13894
45658L-30	13-05V-13895

Part No.	Serial No.
45658L-30	13-05V-13896
45658M-30	13-05V-13897
45977G-30	13-05V-13898
45658L-30	13-05V-13902
45658L-30	13-05V-13903
45658L-30	13-05V-13904
45658L-30	13-05V-13905
45658L-30	13-05V-13906
45977G-30	13-05V-13907
45658L-30	13-05V-13908
45658L-30	13-05V-13909
45658L-30	13-05V-13913
45977G-30	13-05V-13914
45658L-30	13-05V-13915
45658M-30	13-06V-13910
45658L-30	13-06V-13911
45658L-30	13-06V-13912
45658L-30	13-06V-13916
45658L-30	13-06V-13917
45658L-30	13-06V-13918
45658L-30	13-06V-13920
45658L-30	13-06V-13922
45658L-30	13-06V-13923
45977G-30	13-06V-13924
45977G-30	13-06V-13925
45658M-30	13-06V-13926
45658M-30	13-06V-13927
45658L-30	13-06V-13928
45658L-30	13-06V-13930
45977G-30	13-06V-13931
45977G-30	13-06V-13934
45658L-30	13-06V-13935
45658L-30	13-06V-13936
45977G-30	13-06V-13937
45658L-30	13-06V-13938
45977G-30	13-06V-13939
45658M-30	13-06V-13941
45658L-30	13-06V-13942
45826G-30	13-06V-13943
45977G-30	13-06V-13944
45658N-30	13-06V-13946
45658L-30	13-06V-13947
45658L-30	13-06V-13948
45658L-30	13-06V-13949
45977G-30	13-06V-13950
45658L-30	13-06V-13954

Part No.	Serial No.
45658L-30	13-06V-13955
45658L-30	13-06V-13956
45658L-30	13-06V-13957
45658L-30	13-06V-13958
45658L-30	13-06V-13959
45977G-30	13-06V-13960
45658L-30	13-06V-13962
45658L-30	13-06V-13963
45826G-30	13-06V-13966
45658L-30	13-07V-13945
45658L-30	13-07V-13967
45658L-30	13-07V-13968
45658L-30	13-07V-13969
45658L-30	13-07V-13970
45658L-30	13-07V-13971
45658L-30	13-07V-13973
45658N-30	13-07V-13974
45977G-30	13-07V-13975
45658L-30	13-07V-13976
45658L-30	13-07V-13977
45977G-30	13-07V-13978
45658M-30	13-07V-13979
45658L-30	13-07V-13980
45658L-30	13-07V-13981
45977G-30	13-07V-13985
45977G-30	13-07V-13986
45658M-30	13-07V-13989
45658L-30	13-07V-13990
45658L-30	13-07V-13991
45658L-30	13-07V-13992
45977G-30	13-07V-13993
45658N-30	13-07V-13995
45658L-30	13-07V-13996
45658L-30	13-07V-13999
45658L-30	13-07V-14000
45977G-30	13-07V-14001
45658L-30	13-07V-14002
45658L-30	13-07V-14003
45658L-30	13-07V-14005
45658L-30	13-07V-14006
45658L-30	13-07V-14007
45658N-30	13-07V-14008
45658L-30	13-07V-14010
45658N-30	13-07V-14013
45658L-30	13-07V-14014
45658N-30	13-07V-14015

Part No.	Serial No.
45658M-30	13-07V-14016
45658L-30	13-07V-14017
45658L-30	13-07V-14019
45658L-30	13-08V-14020
45658L-30	13-08V-14021
45977G-30	13-08V-14022
45658L-30	13-08V-14023
45658L-30	13-08V-14024
45658M-30	13-08V-14025
45658L-30	13-08V-14026
45658L-30	13-08V-14027
45658M-30	13-08V-14028
45658L-30	13-08V-14029
45658L-30	13-08V-14030
45658L-30	13-08V-14031
45977G-30	13-08V-14033
45658M-30	13-08V-14034
45658L-30	13-08V-14039
45658L-30	13-08V-14041
45658L-30	13-08V-14042
45658L-30	13-08V-14044
45658L-30	13-08V-14045
45658M-30	13-08V-14046
45658L-30	13-08V-14047
45658L-30	13-08V-14049
45977G-30	13-08V-14050
45658L-30	13-08V-14051
45658L-30	13-08V-14053
45977G-30	13-08V-14054
45658L-30	13-08V-14056
45658M-30	13-08V-14057
45658L-30	13-08V-14058
45977G-30	13-08V-14059
45658L-30	13-08V-14062
45658L-30	13-08V-14063
45658N-30	13-08V-14064
45658M-30	13-08V-14066
45658M-30	13-08V-14067
45658L-30	13-08V-14069
45658N-30	13-08V-14070
45658M-30	13-08V-14071
45658L-30	13-08V-14072
45977G-30	13-08V-14073
45658N-30	13-08V-14076
45658L-30	13-08V-14077
45977G-30	13-08V-14078

Part No.	Serial No.
45658M-30	13-08V-14079
45658L-30	13-08V-14080
45658L-30	13-08V-14081
45658L-30	13-08V-14083
45658L-30	13-08V-14084
45658L-30	13-08V-14085
45658L-30	13-09V-14088
45658L-30	13-09V-14089
45658L-30	13-09V-14090
45658L-30	13-09V-14091
45977G-30	13-09V-14093
45658L-30	13-09V-14094
45658L-30	13-09V-14095
45658L-30	13-09V-14099
45658L-30	13-09V-14101
45658M-30	13-09V-14102
45658L-30	13-09V-14103
45658L-30	13-09V-14104
45658M-30	13-09V-14105
45658L-30	13-09V-14106
45658M-30	13-09V-14107
45658L-30	13-09V-14108
45977G-30	13-09V-14111
45658L-30	13-09V-14112
45658L-30	13-09V-14113
45658L-30	13-09V-14114
45658L-30	13-09V-14115
45977G-30	13-09V-14116
45658M-30	13-09V-14120
45658M-30	13-09V-14122
45658M-30	13-09V-14123
45658L-30	13-09V-14124
45658L-30	13-09V-14126
45658L-30	13-09V-14127
45658M-30	13-09V-14128
45658L-30	13-09V-14129
45977G-30	13-09V-14133
45658M-30	13-09V-14134
45658L-30	13-09V-14135
45658L-30	13-09V-14137
45658N-30	13-09V-14138
45658L-30	13-09V-14139
45658M-30	13-09V-14140
45658L-30	13-09V-14141
45658L-30	13-09V-14142
45977G-30	13-09V-14146

Part No.	Serial No.
45977G-30	13-09V-14147
45658L-30	13-10V-14144
45658M-30	13-10V-14145
45658L-30	13-10V-14148
45658M-30	13-10V-14149
45658M-30	13-10V-14152
45658L-30	13-10V-14154
45658L-30	13-10V-14155
45658L-30	13-10V-14156
45977G-30	13-10V-14157
45658L-30	13-10V-14158
45977G-30	13-10V-14159
45658L-30	13-10V-14160
45658L-30	13-10V-14161
45977G-30	13-10V-14162
45977G-30	13-10V-14163
45658L-30	13-10V-14164
45658L-30	13-10V-14165
45658L-30	13-10V-14166
45977G-30	13-10V-14168
45658N-30	13-10V-14173
45658L-30	13-10V-14177
45658L-30	13-10V-14178
45977G-30	13-10V-14179
45658L-30	13-10V-14180
45658L-30	13-10V-14181
45658N-30	13-10V-14182
45658L-30	13-10V-14183
45658L-30	13-10V-14185
45658M-30	13-10V-14190
45658M-30	13-10V-14191
45658L-30	13-10V-14192
45658M-30	13-10V-14193
45658M-30	13-10V-14194
45658M-30	13-10V-14195
45658M-30	13-10V-14196
45658M-30	13-10V-14197
45658L-30	13-10V-14198
45658M-30	13-10V-14199
45658M-30	13-10V-14200
45658M-30	13-10V-14201
45977G-30	13-10V-14202
45658L-30	13-10V-14203
45977G-30	13-10V-14204
45977G-30	13-10V-14205
45658N-30	13-10V-14206

Part No.	Serial No.
45658L-30	13-10V-14211
45658L-30	13-10V-14212
45658N-30	13-10V-14213
45658L-30	13-10V-14215
45658L-30	13-10V-14216
45977G-30	13-10V-14217
45658L-30	13-10V-14222
45658L-30	13-11V-14223
45658L-30	13-11V-14224
45658L-30	13-11V-14225
45658L-30	13-11V-14226
45977G-30	13-11V-14227
45658L-30	13-11V-14228
45977G-30	13-11V-14229
45658L-30	13-11V-14230
45658L-30	13-11V-14231
45658L-30	13-11V-14232
45658N-30	13-11V-14233
45977G-30	13-11V-14234
45658L-30	13-11V-14235
45658L-30	13-11V-14236
45658N-30	13-11V-14238
45658N-30	13-11V-14239
45658L-30	13-11V-14240
45658L-30	13-11V-14241
45658L-30	13-11V-14242
45658L-30	13-11V-14243
45658L-30	13-11V-14244
45658L-30	13-11V-14245
45658L-30	13-11V-14246
45977G-30	13-11V-14247
45977G-30	13-11V-14248
45977G-30	13-11V-14253
45977G-30	13-11V-14264
45658L-30	13-11V-14265
45977G-30	13-11V-14266
45658L-30	13-11V-14267
45658L-30	13-11V-14268
45658L-30	13-11V-14269
45658L-30	13-11V-14270
45658L-30	13-11V-14271
45658L-30	13-11V-14275
45658L-30	13-12V-14277
45658L-30	13-12V-14278
45658N-30	13-12V-14280
45658L-30	13-12V-14281

Part No.	Serial No.
45977G-30	13-12V-14282
45658L-30	13-12V-14283
45658L-30	13-12V-14286
45658L-30	13-12V-14287
45658M-30	13-12V-14288
45977G-30	13-12V-14289
45658L-30	13-12V-14290
45658N-30	13-12V-14293
45977G-30	13-12V-14294
45658L-30	13-12V-14295
45658M-30	13-12V-14296
45658L-30	13-12V-14297
45658N-30	13-12V-14300
45977G-30	13-12V-14303
45658L-30	13-12V-14304
45658N-30	13-12V-14305
45658L-30	13-12V-14306
45977G-30	13-12V-14307
45658L-30	13-12V-14308
45658L-30	13-12V-14309
45658L-30	13-12V-14310
45977G-30	13-12V-14312
45658L-30	13-12V-14313
45658L-30	13-12V-14314
45658L-30	13-12V-14315
45658L-30	13-12V-14316
45658L-30	13-12V-14317
45658L-30	13-12V-14318
45658M-30	14-01V-14319
45658M-30	14-01V-14320
45658L-30	14-01V-14321
45658L-30	14-01V-14322
45658M-30	14-01V-14323
45977G-30	14-01V-14333
45658M-30	14-01V-14334
45658L-30	14-01V-14335
45658N-30	14-01V-14336
45977G-30	14-01V-14337
45658M-30	14-01V-14338
45658L-30	14-01V-14339
45658L-30	14-01V-14345
45658L-30	14-01V-14346
45658L-30	14-01V-14347
45658N-30	14-01V-14348
45658L-30	14-01V-14349
45658L-30	14-01V-14350

Part No.	Serial No.
45658L-30	14-01V-14351
45977G-30	14-01V-14352
45658N-30	14-01V-14354
45658L-30	14-01V-14360
45977G-30	14-01V-14361
45658L-30	14-01V-14363
45658L-30	14-01V-14365
45658L-30	14-01V-14366
45658N-30	14-01V-14367
45658M-30	14-01V-14369
45658M-30	14-01V-14372
45658L-30	14-01V-14373
45658M-30	14-01V-14375
45977G-30	14-01V-14376
45658L-30	14-01V-14377
45658L-30	14-01V-14378
45658L-30	14-01V-14380
45658M-30	14-01V-14382
45658L-30	14-01V-14386
45658M-30	14-01V-14387
45658L-30	14-01V-14388
45658L-30	14-01V-14390
45658L-30	14-01V-14391
45658L-30	14-02V-14392
45658L-30	14-02V-14393
45658L-30	14-02V-14395
45658M-30	14-02V-14396
45658L-30	14-02V-14397
45658M-30	14-02V-14403
45658L-30	14-02V-14404
45977G-30	14-02V-14405
45658L-30	14-02V-14406
45658L-30	14-02V-14407
45658L-30	14-02V-14408
45658L-30	14-02V-14409
45658L-30	14-02V-14411
45658L-30	14-02V-14412
45658L-30	14-02V-14413
45977G-30	14-02V-14414
45658L-30	14-02V-14415
45658L-30	14-02V-14416
45658L-30	14-02V-14418
45658L-30	14-02V-14419
45658M-30	14-02V-14426
45658L-30	14-02V-14427
45977G-30	14-02V-14428

Part No.	Serial No.
45658L-30	14-02V-14429
45977G-30	14-02V-14430
45658L-30	14-02V-14431
45658L-30	14-02V-14432
45977G-30	14-02V-14433
45658L-30	14-02V-14434
45658L-30	14-02V-14435
45658L-30	14-02V-14436
45658L-30	14-02V-14437
45658L-30	14-02V-14438
45658M-30	14-02V-14439
45658L-30	14-02V-14440
45658L-30	14-02V-14441
45658L-30	14-02V-14442
45658L-30	14-02V-14443
45977G-30	14-02V-14444
45658L-30	14-02V-14445
45977G-30	14-02V-14451
45658N-30	14-02V-14460
45658L-30	14-03V-14452
45658L-30	14-03V-14453
45658L-30	14-03V-14454
45658L-30	14-03V-14455
45658M-30	14-03V-14456
45658L-30	14-03V-14457
45658L-30	14-03V-14458
45658L-30	14-03V-14466
45658M-30	14-03V-14467
45658L-30	14-03V-14468
45658L-30	14-03V-14469
45977G-30	14-03V-14470
45658L-30	14-03V-14471
45658L-30	14-03V-14474
45658L-30	14-03V-14475
45658M-30	14-03V-14476
45658L-30	14-03V-14477
45658L-30	14-03V-14478
45977G-30	14-03V-14479
45977G-30	14-03V-14482
45977G-30	14-03V-14491
45658L-30	14-03V-14492
45658L-30	14-03V-14493
45658L-30	14-03V-14494
45658L-30	14-03V-14495
45658L-30	14-03V-14497
45658L-30	14-03V-14498

Part No.	Serial No.
45658L-30	14-03V-14503
45658L-30	14-03V-14504
45658L-30	14-03V-14506
45658L-30	14-03V-14507
45977G-30	14-03V-14508
45658L-30	14-03V-14509
45658L-30	14-03V-14510
45658L-30	14-03V-14511
45658L-30	14-03V-14513
45977G-30	14-03V-14514
45977G-30	14-03V-14516
45658L-30	14-03V-14517
45658L-30	14-03V-14518
45658L-30	14-04V-14521
45658L-30	14-04V-14522
45658L-30	14-04V-14524
45977G-30	14-04V-14525
45658L-30	14-04V-14526
45658L-30	14-04V-14528
45658L-30	14-04V-14529
45658N-30	14-04V-14531
45658N-30	14-04V-14532
45977G-30	14-04V-14533
45658N-30	14-04V-14535
45658L-30	14-04V-14536
45658L-30	14-04V-14538
45658L-30	14-04V-14539
45658L-30	14-04V-14540
45977G-30	14-04V-14541
45658L-30	14-04V-14543
45977G-30	14-04V-14545
45658M-30	14-04V-14560
45658N-30	14-04V-14562
45658L-30	14-04V-14564
45658M-30	14-04V-14565
45658M-30	14-04V-14567
45658L-30	14-04V-14568
45977G-30	14-04V-14569
45658L-30	14-04V-14570
45658L-30	14-04V-14572
45977G-30	14-04V-14573
45658L-30	14-04V-14574
45658L-30	14-04V-14575
45977G-30	14-04V-14576
45977G-30	14-04V-14577
45658L-30	14-04V-14580

Part No.	Serial No.
45658L-30	14-04V-14581
45977G-30	14-04V-14582
45658L-30	14-04V-14583
45658L-30	14-04V-14585
45658L-30	14-04V-14586
45658L-30	14-04V-14587
45658L-30	14-04V-14590
45658L-30	14-04V-14592
45658L-30	14-04V-14593
45658L-30	14-04V-14595
45658L-30	14-04V-14598
45658L-30	14-04V-14600
45658L-30	14-04V-14603
45658L-30	14-04V-14604
45658L-30	14-04V-14605
45658L-30	14-04V-14606
45658M-30	14-04V-14607
45658L-30	14-05V-14608
45658L-30	14-05V-14609
45658L-30	14-05V-14610
45658L-30	14-05V-14612
45658L-30	14-05V-14613
45658L-30	14-05V-14614
45658M-30	14-05V-14615
45658L-30	14-05V-14616
45658L-30	14-05V-14619
45658L-30	14-05V-14620
45977G-30	14-05V-14622
45658M-30	14-05V-14625
45977G-30	14-05V-14626
45977G-30	14-05V-14627
45658L-30	14-05V-14628
45658N-30	14-05V-14629
45977G-30	14-05V-14630
45658L-30	14-05V-14631
45658L-30	14-05V-14633
45658L-30	14-05V-14634
45658L-30	14-05V-14636
45658L-30	14-05V-14637
45658M-30	14-05V-14640
45658L-30	14-05V-14641
45658L-30	14-05V-14642
45658M-30	14-05V-14643
45658L-30	14-05V-14645
45658M-30	14-05V-14646
45658N-30	14-05V-14647

Part No.	Serial No.
45658M-30	14-05V-14649
45658M-30	14-05V-14650
45658L-30	14-05V-14652
45977G-30	14-05V-14654
45658M-30	14-05V-14657
45977G-30	14-05V-14658
45658L-30	14-05V-14659
45658L-30	14-05V-14660
45977G-30	14-05V-14662
45977G-30	14-05V-14663
45658L-30	14-05V-14666
45658L-30	14-05V-14668
45658N-30	14-05V-14669
45658M-30	14-05V-14671
45658L-30	14-05V-14673
45658L-30	14-05V-14674
45658L-30	14-05V-14676
45977G-30	14-05V-14677
45658M-30	14-05V-14678
45658L-30	14-06V-14679
45658L-30	14-06V-14680
45658L-30	14-06V-14681
45658L-30	14-06V-14682
45658L-30	14-06V-14685
45658L-30	14-06V-14690
45977G-30	14-06V-14691
45977G-30	14-06V-14692
45658L-30	14-06V-14694
45658L-30	14-06V-14696
45658L-30	14-06V-14697
45658L-30	14-06V-14698
45658L-30	14-06V-14700
45658L-30	14-06V-14701
45658L-30	14-06V-14702
45658L-30	14-06V-14703
45658L-30	14-06V-14704
45658N-30	14-06V-14705
45658L-30	14-06V-14706
45977G-30	14-06V-14708
45977G-30	14-06V-14712
45658M-30	14-06V-14713
45658L-30	14-06V-14715
45658L-30	14-06V-14716
45658L-30	14-06V-14718
45658L-30	14-06V-14720
45658L-30	14-06V-14721

Part No.	Serial No.
45658L-30	14-06V-14723
45658L-30	14-06V-14724
45658M-30	14-06V-14728
45977G-30	14-06V-14729
45977G-30	14-06V-14730
45658L-30	14-06V-14731
45658M-30	14-06V-14736
45658L-30	14-06V-14742
45658M-30	14-06V-14743
45658L-30	14-06V-14744
45658L-30	14-06V-14745
45658L-30	14-06V-14746
45658L-30	14-06V-14747
45658M-30	14-06V-14748
45658L-30	14-06V-14749
45658M-30	14-06V-14750
45977G-30	14-06V-14751
45658L-30	14-07V-14741
45977G-30	14-07V-14754
45977G-30	14-07V-14755
45658M-30	14-07V-14757
45658L-30	14-07V-14758
45658M-30	14-07V-14761
45658L-30	14-07V-14763
45977G-30	14-07V-14765
45977G-30	14-07V-14766
45658L-30	14-07V-14769
45658L-30	14-07V-14770
45658L-30	14-07V-14771
45658L-30	14-07V-14772
45658L-30	14-07V-14773
45658L-30	14-07V-14775
45658N-30	14-07V-14776
45658M-30	14-07V-14778
45977G-30	14-07V-14779
45658L-30	14-07V-14780
45658L-30	14-07V-14781
45658L-30	14-07V-14782
45658M-30	14-07V-14783
45658L-30	14-07V-14786
45658L-30	14-07V-14787
45658L-30	14-07V-14788
45658M-30	14-07V-14789
45658L-30	14-07V-14796
45658L-30	14-07V-14797
45658L-30	14-07V-14798

Part No.	Serial No.
45658L-30	14-07V-14799
45658L-30	14-07V-14800
45658L-30	14-07V-14801
45658L-30	14-07V-14802
45658L-30	14-07V-14803
45658L-30	14-07V-14804
45658M-30	14-07V-14805
45658L-30	14-07V-14806
45658L-30	14-07V-14808
45658L-30	14-07V-14809
45977G-30	14-07V-14810
45658M-30	14-07V-14811
45658L-30	14-07V-14812
45977G-30	14-07V-14814
45658L-30	14-07V-14819
45658L-30	14-07V-14820
45658L-30	14-07V-14822
45658L-30	14-07V-14823
45977G-30	14-08V-14824
45658L-30	14-08V-14825
45658L-30	14-08V-14826
45658L-30	14-08V-14827
45658L-30	14-08V-14830
45658M-30	14-08V-14831
45658L-30	14-08V-14835
45658M-30	14-08V-14836
45977G-30	14-08V-14837
45658M-30	14-08V-14839
45658N-30	14-08V-14840
45658M-30	14-08V-14842
45658M-30	14-08V-14843
45658L-30	14-08V-14844
45658L-30	14-08V-14845
45658N-30	14-08V-14846
45658M-30	14-08V-14847
45658N-30	14-08V-14848
45658L-30	14-08V-14849
45658L-30	14-08V-14850
45658M-30	14-08V-14851
45658L-30	14-08V-14852
45658L-30	14-08V-14853
45658N-30	14-08V-14854
45658L-30	14-08V-14855
45658L-30	14-08V-14856
45658L-30	14-08V-14857
45658N-30	14-08V-14858

Part No.	Serial No.
45658L-30	14-08V-14859
45977G-30	14-08V-14860
45658L-30	14-08V-14861
45658M-30	14-08V-14862
45658M-30	14-08V-14863
45658M-30	14-08V-14864
45658L-30	14-08V-14865
45658L-30	14-08V-14866
45658L-30	14-08V-14867
45658L-30	14-08V-14868
45658L-30	14-08V-14869
45977G-30	14-08V-14874
45658L-30	14-08V-14882
45658L-30	14-08V-14883
45658L-30	14-08V-14884
45658M-30	14-08V-14885
45658L-30	14-08V-14886
45658L-30	14-08V-14887
45658L-30	14-08V-14888
45977G-30	14-08V-14891
45658N-30	14-08V-14893
45977G-30	14-08V-14898
45658L-30	14-08V-14899
45658L-30	14-08V-14906
45658L-30	14-08V-14907
45658L-30	14-09V-14900
45658L-30	14-09V-14901
45977G-30	14-09V-14902
45658M-30	14-09V-14903
45658L-30	14-09V-14912
45658L-30	14-09V-14913
45977G-30	14-09V-14916
45658L-30	14-09V-14917
45658M-30	14-09V-14919
45658L-30	14-09V-14920
45658L-30	14-09V-14923
45658L-30	14-09V-14924
45658M-30	14-09V-14926
45658L-30	14-09V-14927
45658L-30	14-09V-14928
45977G-30	14-09V-14929
45658L-30	14-09V-14931
45977G-30	14-09V-14932
45658M-30	14-09V-14935
45658L-30	14-09V-14937
45658L-30	14-09V-14939

Part No.	Serial No.
45658L-30	14-09V-14942
45658L-30	14-09V-14943
45658N-30	14-09V-14944
45658L-30	14-09V-14946
45658L-30	14-09V-14947
45658M-30	14-09V-14948
45658L-30	14-09V-14949
45658L-30	14-09V-14950
45658L-30	14-09V-14951
45658M-30	14-09V-14952
45658L-30	14-09V-14954
45658L-30	14-09V-14955
45658M-30	14-09V-14957
45977G-30	14-09V-14958
45977G-30	14-09V-14965
45658L-30	14-09V-14967
45658L-30	14-09V-14971
45658L-30	14-10V-14974
45658L-30	14-10V-14981
45658L-30	14-10V-14983
45658L-30	14-10V-14984
45658L-30	14-10V-14989
45658L-30	14-10V-14994
45977G-30	14-10V-14995
45658L-30	14-10V-14996
45658L-30	14-10V-14997
45977G-30	14-10V-15001
45658L-30	14-10V-15002
45977G-30	14-10V-15004
45977G-30	14-10V-15007
45658L-30	14-10V-15008
45658L-30	14-10V-15009
45977G-30	14-10V-15010
45658N-30	14-10V-15012
45977G-30	14-10V-15017
45658M-30	14-10V-15018
45658M-30	14-10V-15019
45658N-30	14-10V-15030
45977G-30	14-10V-15031
45658M-30	14-10V-15032
45658M-30	14-10V-15036
45658L-30	14-10V-15037
45977G-30	14-10V-15038
45658L-30	14-10V-15039
45977G-30	14-10V-15040
45658N-30	14-10V-15042

Part No.	Serial No.
45977G-30	14-10V-15065
45658L-30	14-11V-15050
45658L-30	14-11V-15051
45658L-30	14-11V-15052
45658L-30	14-11V-15053
45658M-30	14-11V-15054
45658L-30	14-11V-15059
45658L-30	14-11V-15060
45658M-30	14-11V-15061
45658L-30	14-11V-15062
45658L-30	14-11V-15072
45658L-30	14-11V-15073
45658L-30	14-11V-15078
45658L-30	14-11V-15081
45658L-30	14-11V-15082
45977G-30	14-11V-15085
45658L-30	14-11V-15086
45658L-30	14-11V-15088
45658M-30	14-11V-15090
45977G-30	14-11V-15092
45658M-30	14-11V-15093
45658L-30	14-11V-15095
45658L-30	14-11V-15100
45658L-30	14-11V-15102
45658L-30	14-11V-15103
45658L-30	14-11V-15104
45658L-30	14-11V-15105
45658L-30	14-11V-15107
45977G-30	14-11V-15109
45658L-30	14-11V-15110
45658L-30	14-11V-15112
45658M-30	14-11V-15113
45658L-30	14-11V-15114
45658L-30	14-11V-15115
45658L-30	14-11V-15116
45977G-30	14-11V-15117
45658L-30	14-11V-15118
45658L-30	14-11V-15121
45658L-30	14-12V-15119
45658L-30	14-12V-15125
45658L-30	14-12V-15126
45658L-30	14-12V-15127
45658L-30	14-12V-15128
45658L-30	14-12V-15129
45658L-30	14-12V-15130
45658L-30	14-12V-15131

Part No.	Serial No.
45977G-30	14-12V-15137
45658L-30	14-12V-15142
45658L-30	14-12V-15143
45658L-30	14-12V-15144
45658L-30	14-12V-15146
45658L-30	14-12V-15147
45658L-30	14-12V-15149
45658L-30	14-12V-15150
45977G-30	14-12V-15152
45658L-30	14-12V-15153
45658L-30	14-12V-15155
45658L-30	14-12V-15156
45658L-30	14-12V-15159
45658L-30	14-12V-15160
45658L-30	14-12V-15163
45658L-30	14-12V-15164
45658L-30	14-12V-15165
45658L-30	14-12V-15172
45658L-30	14-12V-15173
45658L-30	14-12V-15174
45658L-30	14-12V-15178
45658L-30	14-12V-15179
45977G-30	14-12V-15182
45658L-30	14-12V-15183
45977G-30	14-12V-15184
45658L-30	14-12V-15186
45658L-30	14-12V-15188
45658M-30	15-01V-15191
45977G-30	15-01V-15192
45658L-30	15-01V-15193
45658L-30	15-01V-15194
45658L-30	15-01V-15195
45658M-30	15-01V-15196
45977G-30	15-01V-15197
45658L-30	15-01V-15200
45977G-30	15-01V-15201
45658L-30	15-01V-15202
45658L-30	15-01V-15203
45658L-30	15-01V-15204
45658L-30	15-01V-15205
45977G-30	15-01V-15206
45658L-30	15-01V-15208
45658L-30	15-01V-15216
45658L-30	15-01V-15217
45658L-30	15-01V-15218
45658L-30	15-01V-15219

Part No.	Serial No.
45658M-30	15-01V-15220
45658L-30	15-01V-15221
45658M-30	15-01V-15222
45658M-30	15-01V-15229
45658L-30	15-01V-15230
45658M-30	15-01V-15231
45658L-30	15-01V-15232
45658L-30	15-01V-15234
45658L-30	15-01V-15239
45658L-30	15-01V-15240
45658L-30	15-01V-15241
45658M-30	15-01V-15242
45658N-30	15-01V-15244
45658L-30	15-01V-15245
45658L-30	15-01V-15246
45658L-30	15-01V-15247
45658L-30	15-01V-15248
45658L-30	15-01V-15249
45658L-30	15-01V-15250
45658L-30	15-01V-15251
45658M-30	15-01V-15252
45658L-30	15-01V-15253
45658L-30	15-01V-15254
45658L-30	15-01V-15255
45658L-30	15-02V-15265
45977G-30	15-02V-15267
45658L-30	15-02V-15269
45977G-30	15-02V-15270
45658L-30	15-02V-15271
45658L-30	15-02V-15272
45658L-30	15-02V-15273
45658L-30	15-02V-15279
45658L-30	15-02V-15280
45658L-30	15-02V-15281
45658L-30	15-02V-15282
45658L-30	15-02V-15283
45658L-30	15-02V-15284
45658L-30	15-02V-15285
45658L-30	15-02V-15286
45658L-30	15-02V-15287
45977G-30	15-02V-15288
45977G-30	15-02V-15294
45658L-30	15-02V-15295
45658L-30	15-02V-15296
45658L-30	15-02V-15297
45658M-30	15-02V-15298

Part No.	Serial No.
45658L-30	15-02V-15299
45658M-30	15-02V-15300
45658L-30	15-02V-15308
45658L-30	15-02V-15309
45658L-30	15-02V-15310
45658L-30	15-02V-15311
45658L-30	15-02V-15312
45658L-30	15-02V-15313
45658L-30	15-02V-15316
45658L-30	15-02V-15317
45977G-30	15-02V-15318
45658M-30	15-02V-15320
45658L-30	15-02V-15322
45658L-30	15-02V-15323
45658L-30	15-02V-15325
45977G-30	15-02V-15326
45658L-30	15-02V-15330
45658L-30	15-02V-15331
45977G-30	15-02V-15333
45658L-30	15-02V-15334
45658L-30	15-02V-15335
45658M-30	15-03V-15336
45977G-30	15-03V-15337
45658L-30	15-03V-15338
45658L-30	15-03V-15340
45658L-30	15-03V-15341
45977G-30	15-03V-15342
45658L-30	15-03V-15351
45658L-30	15-03V-15352
45658L-30	15-03V-15353
45658L-30	15-03V-15354
45658L-30	15-03V-15358
45977G-30	15-03V-15359
45977G-30	15-03V-15361
45658L-30	15-03V-15362
45658L-30	15-03V-15365
45658L-30	15-03V-15366
45977G-30	15-03V-15367
45977G-30	15-03V-15369
45658L-30	15-03V-15371
45658L-30	15-03V-15372
45658L-30	15-03V-15374
45658L-30	15-03V-15375
45658L-30	15-03V-15378
45658L-30	15-03V-15379
45658L-30	15-03V-15381

Part No.	Serial No.
45658L-30	15-03V-15382
45658L-30	15-03V-15383
45658L-30	15-03V-15389
45658L-30	15-03V-15392
45658N-30	15-03V-15393
45658L-30	15-03V-15395
45977G-30	15-03V-15396
45977G-30	15-03V-15398
45658L-30	15-03V-15399
45977G-30	15-03V-15400
45977G-30	15-03V-15405
45977G-30	15-03V-15407
45658L-30	15-03V-15408
45658L-30	15-03V-15410
45658L-30	15-03V-15411
45977G-30	15-03V-15413
45977G-30	15-03V-15414
45658L-30	15-03V-15415
45658L-30	15-03V-15416
45658N-30	15-03V-15417
45658L-30	15-03V-15418
45658L-30	15-04V-15419
45658L-30	15-04V-15422
45977G-30	15-04V-15423
45658L-30	15-04V-15424
45658L-30	15-04V-15425
45658L-30	15-04V-15426
45658L-30	15-04V-15427
45977G-30	15-04V-15438
45658L-30	15-04V-15439
45658L-30	15-04V-15440
45658L-30	15-04V-15441
45658L-30	15-04V-15442
45658L-30	15-04V-15443
45658L-30	15-04V-15444
45658L-30	15-04V-15445
45658M-30	15-04V-15446
45977G-30	15-04V-15450
45658L-30	15-04V-15455
45658L-30	15-04V-15456
45977G-30	15-04V-15458
45658L-30	15-04V-15459
45977G-30	15-04V-15460
45658L-30	15-04V-15461
45977G-30	15-04V-15462
45658L-30	15-04V-15463

Part No.	Serial No.
45658L-30	15-04V-15464
45658M-30	15-04V-15465
45658L-30	15-04V-15469
45658L-30	15-04V-15470
45658L-30	15-04V-15472
45977G-30	15-04V-15473
45977G-30	15-04V-15475
45658L-30	15-04V-15476
45658L-30	15-04V-15477
45977G-30	15-04V-15478
45658L-30	15-04V-15480
45658M-30	15-04V-15481
45658L-30	15-04V-15482
45658L-30	15-04V-15485
45658L-30	15-04V-15488
45658L-30	15-04V-15489
45658M-30	15-04V-15490
45658L-30	15-04V-15493
45977G-30	15-04V-15494
45658M-30	15-04V-15495
45658L-30	15-04V-15496
45658M-30	15-04V-15497
45658L-30	15-04V-15502
45658L-30	15-05V-15503
45658L-30	15-05V-15504
45658L-30	15-05V-15505
45658L-30	15-05V-15506
45658L-30	15-05V-15507
45658L-30	15-05V-15508
45658L-30	15-05V-15512
45658M-30	15-05V-15513
45658L-30	15-05V-15514
45658L-30	15-05V-15515
45977G-30	15-05V-15516
45977G-30	15-05V-15519
45658L-30	15-05V-15520
45977G-30	15-05V-15521
45658L-30	15-05V-15522
45658L-30	15-05V-15523
45658L-30	15-05V-15526
45658L-30	15-05V-15527
45658L-30	15-05V-15528
45658L-30	15-05V-15529
45658N-30	15-05V-15530
45658L-30	15-05V-15531
45658N-30	15-05V-15533

Part No.	Serial No.
45658L-30	15-05V-15535
45977G-30	15-05V-15537
45658L-30	15-05V-15538
45658L-30	15-05V-15539
45658L-30	15-05V-15540
45658L-30	15-05V-15541
45658L-30	15-05V-15543
45658L-30	15-05V-15544
45658L-30	15-05V-15546
45658L-30	15-05V-15547
45658N-30	15-05V-15548
45658L-30	15-05V-15550
45658L-30	15-05V-15551
45658L-30	15-05V-15552
45658L-30	15-05V-15553
45658L-30	15-05V-15554
45658L-30	15-05V-15557
45658L-30	15-05V-15558
45658L-30	15-05V-15560
45658M-30	15-05V-15561
45658L-30	15-05V-15562
45658L-30	15-05V-15563
45658L-30	15-05V-15564
45658L-30	15-06V-15559
45658L-30	15-06V-15573
45977G-30	15-06V-15574
45658L-30	15-06V-15575
45658L-30	15-06V-15576
45658L-30	15-06V-15577
45658L-30	15-06V-15578
45658L-30	15-06V-15579
45658N-30	15-06V-15580
45658L-30	15-06V-15581
45658L-30	15-06V-15582
45658L-30	15-06V-15583
45658L-30	15-06V-15584
45658L-30	15-06V-15585
45658L-30	15-06V-15586
45658L-30	15-06V-15587
45658L-30	15-06V-15591
45658L-30	15-06V-15592
45658M-30	15-06V-15595
45658L-30	15-06V-15597
45658L-30	15-06V-15598
45977G-30	15-06V-15603
45658L-30	15-06V-15604

Part No.	Serial No.
45658L-30	15-06V-15605
45658L-30	15-06V-15606
45658L-30	15-06V-15607
45658L-30	15-06V-15608
45658L-30	15-06V-15610
45658L-30	15-06V-15611
45658L-30	15-06V-15612
45658L-30	15-06V-15613
45658N-30	15-06V-15614
45658L-30	15-06V-15616
45658L-30	15-06V-15617
45658M-30	15-06V-15618
45658L-30	15-06V-15619
45658L-30	15-06V-15620
45658M-30	15-06V-15621
45658L-30	15-06V-15623
45658L-30	15-06V-15624
45658L-30	15-06V-15638
45658M-30	15-07V-15625
45658M-30	15-07V-15626
45658L-30	15-07V-15627
45658L-30	15-07V-15628
45658M-30	15-07V-15629
45977G-30	15-07V-15631
45658M-30	15-07V-15632
45658L-30	15-07V-15633
45658L-30	15-07V-15634
45658L-30	15-07V-15635
45658M-30	15-07V-15636
45658L-30	15-07V-15637
45658L-30	15-07V-15640
45658L-30	15-07V-15642
45658M-30	15-07V-15643
45658L-30	15-07V-15646
45658L-30	15-07V-15647
45658L-30	15-07V-15648
45658L-30	15-07V-15650
45977G-30	15-07V-15654
45658L-30	15-07V-15655
45658L-30	15-07V-15656
45658L-30	15-07V-15657
45658L-30	15-07V-15658
45977G-30	15-07V-15659
45658L-30	15-07V-15660
45658L-30	15-07V-15664
45658L-30	15-07V-15665

Part No.	Serial No.
45658L-30	15-07V-15666
45658L-30	15-07V-15667
45658L-30	15-07V-15668
45658L-30	15-07V-15669
45658L-30	15-07V-15672
45658L-30	15-07V-15673
45658L-30	15-07V-15674
45658L-30	15-07V-15675
45658L-30	15-07V-15676
45977G-30	15-07V-15682
45658L-30	15-08V-15677
45977G-30	15-08V-15685
45658L-30	15-08V-15686
45658L-30	15-08V-15687
45658L-30	15-08V-15689
45658N-30	15-08V-15690
45977G-30	15-08V-15691
45658L-30	15-08V-15697
45658L-30	15-08V-15701
45658L-30	15-08V-15702
45658L-30	15-08V-15703
45658L-30	15-08V-15704
45977G-30	15-08V-15705
45658M-30	15-08V-15706
45658L-30	15-08V-15707
45658L-30	15-08V-15708
45658L-30	15-08V-15712
45658L-30	15-08V-15714
45658M-30	15-08V-15716
45658L-30	15-08V-15717
45977G-30	15-08V-15720
45658M-30	15-08V-15721
45658M-30	15-08V-15722
45658L-30	15-08V-15723
45658L-30	15-08V-15726
45658L-30	15-08V-15727
45977G-30	15-08V-15729
45658L-30	15-08V-15730
45658L-30	15-08V-15732
45658L-30	15-08V-15733
45658L-30	15-08V-15735
45658L-30	15-08V-15736
45658L-30	15-08V-15737
45658L-30	15-08V-15740
45977G-30	15-08V-15741
45977G-30	15-08V-15742

Part No.	Serial No.
45658L-30	15-09V-15743
45658L-30	15-09V-15744
45658L-30	15-09V-15751
45658L-30	15-09V-15755
45658L-30	15-09V-15757
45658L-30	15-09V-15758
45977G-30	15-09V-15759
45658M-30	15-09V-15760
45658M-30	15-09V-15761
45658L-30	15-09V-15762
45658L-30	15-09V-15763
45658L-30	15-09V-15764
45658L-30	15-09V-15765
45658L-30	15-09V-15766
45658L-30	15-09V-15767
45658L-30	15-09V-15768
45658L-30	15-09V-15769
45658L-30	15-09V-15770
45658L-30	15-09V-15771
45658L-30	15-09V-15773
45658L-30	15-09V-15776
45977G-30	15-09V-15777
45658N-30	15-09V-15780
45977G-30	15-09V-15781
45658L-30	15-09V-15782
45658L-30	15-09V-15785
45658L-30	15-09V-15789
45658L-30	15-09V-15790
45658L-30	15-09V-15791
45658L-30	15-09V-15792
45977G-30	15-09V-15793
45658L-30	15-09V-15795
45658L-30	15-09V-15796
45658L-30	15-09V-15797
45658L-30	15-09V-15798
45658L-30	15-09V-15799
45658L-30	15-09V-15800
45658L-30	15-09V-15803
45658L-30	15-09V-15804
45658L-30	15-09V-15813
45658L-30	15-09V-15814
45658L-30	15-10V-15811
45658L-30	15-10V-15812
45658L-30	15-10V-15817
45658L-30	15-10V-15818
45658L-30	15-10V-15819

Part No.	Serial No.
45658M-30	15-10V-15820
45658M-30	15-10V-15821
45658L-30	15-10V-15824
45658L-30	15-10V-15825
45658L-30	15-10V-15826
45658L-30	15-10V-15827
45977G-30	15-10V-15828
45977G-30	15-10V-15829
45977G-30	15-10V-15830
45658M-30	15-10V-15831
45658M-30	15-10V-15834
45658M-30	15-10V-15835
45658M-30	15-10V-15837
45977G-30	15-10V-15838
45658M-30	15-10V-15839
45658L-30	15-10V-15840
45658L-30	15-10V-15842
45658L-30	15-10V-15843
45658L-30	15-10V-15845
45658L-30	15-10V-15846
45658L-30	15-10V-15848
45658L-30	15-10V-15849
45658M-30	15-10V-15851
45977G-30	15-10V-15852
45658M-30	15-10V-15853
45658M-30	15-10V-15854
45658L-30	15-10V-15856
45658L-30	15-10V-15857
45977G-30	15-10V-15858
45977G-30	15-10V-15862
45977G-30	15-10V-15863
45977G-30	15-10V-15864
45658L-30	15-10V-15865
45658M-30	15-10V-15866
45658M-30	15-10V-15867
45977G-30	15-10V-15868
45977G-30	15-10V-15869
45658L-30	15-11V-15870
45658L-30	15-11V-15871
45658L-30	15-11V-15872
45658L-30	15-11V-15873
45977G-30	15-11V-15874
45658L-30	15-11V-15875
45658L-30	15-11V-15877
45658L-30	15-11V-15879
45658L-30	15-11V-15881

Part No.	Serial No.
45658L-30	15-11V-15882
45658L-30	15-11V-15883
45658L-30	15-11V-15884
45658L-30	15-11V-15885
45658L-30	15-11V-15886
45977G-30	15-11V-15888
45658L-30	15-11V-15889
45658N-30	15-11V-15890
45658L-30	15-11V-15899
45977G-30	15-11V-15900
45977G-30	15-11V-15901
45658M-30	15-11V-15902
45658L-30	15-11V-15903
45658M-30	15-11V-15904
45658M-30	15-11V-15905
45658L-30	15-11V-15910
45658L-30	15-11V-15911
45977G-30	15-11V-15912
45977G-30	15-11V-15913
45658M-30	15-11V-15914
45658L-30	15-11V-15915
45977G-30	15-11V-15916
45658L-30	15-11V-15918
45658L-30	15-11V-15919
45658L-30	15-12V-15923
45658L-30	15-12V-15924
45658L-30	15-12V-15929
45977G-30	15-12V-15931
45658L-30	15-12V-15932
45658L-30	15-12V-15933
45658M-30	15-12V-15934
45977G-30	15-12V-15935
45658L-30	15-12V-15936
45658L-30	15-12V-15937
45658M-30	15-12V-15938
45977G-30	15-12V-15939
45658L-30	15-12V-15940
45658L-30	15-12V-15941
45658L-30	15-12V-15943
45977G-30	15-12V-15944
45977G-30	15-12V-15946
45658L-30	15-12V-15947
45658L-30	15-12V-15949
45658L-30	15-12V-15950
45658L-30	15-12V-15952
45658L-30	15-12V-15953

Part No.	Serial No.
45658L-30	15-12V-15954
45658L-30	15-12V-15955
45658L-30	15-12V-15956
45658L-30	15-12V-15957
45658L-30	15-12V-15959
45658L-30	15-12V-15960
45977G-30	15-12V-15962
45658L-30	15-12V-15963
45658L-30	15-12V-15966
45658M-30	15-12V-15967
45977G-30	15-12V-15969
45658L-30	15-12V-15972
45658L-30	15-12V-15973
45658L-30	15-12V-15977
45658L-30	16-01V-15978
45658L-30	16-01V-15979
45658L-30	16-01V-15980
45658L-30	16-01V-15981
45658L-30	16-01V-15982
45658L-30	16-01V-15983
45658L-30	16-01V-15984
45658L-30	16-01V-15985
45658L-30	16-01V-15987
45658L-30	16-01V-15991
45658L-30	16-01V-15992
45658L-30	16-01V-15993
45658L-30	16-01V-15994
45658M-30	16-01V-15995
45658L-30	16-01V-15996
45658L-30	16-01V-15997
45658M-30	16-01V-15999
45658L-30	16-01V-16000
45658L-30	16-01V-16001
45658L-30	16-01V-16005
45658L-30	16-01V-16006
45658L-30	16-01V-16007
45658L-30	16-01V-16008
45658L-30	16-01V-16009
45658L-30	16-01V-16010
45658L-30	16-01V-16011
45658L-30	16-01V-16013
45658L-30	16-01V-16017
45658L-30	16-01V-16018
45658L-30	16-01V-16019
45658L-30	16-01V-16020
45658L-30	16-01V-16021

Part No.	Serial No.
45658L-30	16-01V-16022
45977G-30	16-01V-16023
45658L-30	16-01V-16024
45658L-30	16-01V-16025
45658L-30	16-01V-16026
45977G-30	16-01V-16027
45658L-30	16-02V-16030
45658L-30	16-02V-16031
45658L-30	16-02V-16032
45658L-30	16-02V-16033
45658L-30	16-02V-16034
45658L-30	16-02V-16035
45977G-30	16-02V-16036
45977G-30	16-02V-16038
45977G-30	16-02V-16039
45658L-30	16-02V-16040
45658L-30	16-02V-16043
45658L-30	16-02V-16044
45977G-30	16-02V-16045
45658L-30	16-02V-16046
45658L-30	16-02V-16047
45658L-30	16-02V-16048
45658L-30	16-02V-16049
45658L-30	16-02V-16051
45977G-30	16-02V-16052
45658L-30	16-02V-16053
45658M-30	16-02V-16054
45658L-30	16-02V-16056
45977G-30	16-02V-16057
45658L-30	16-02V-16058
45658L-30	16-02V-16059
45658L-30	16-02V-16060
45658L-30	16-02V-16061
45658L-30	16-02V-16063
45658N-30	16-02V-16064
45658L-30	16-02V-16065
45658L-30	16-02V-16067
45977G-30	16-02V-16069
45658L-30	16-02V-16070
45977G-30	16-02V-16071
45658L-30	16-02V-16072
45658L-30	16-02V-16073
45977G-30	16-02V-16074
45977G-30	16-02V-16076
45977G-30	16-02V-16077
45658L-30	16-02V-16079

Part No.	Serial No.
45658L-30	16-02V-16083
45658L-30	16-02V-16085
45977G-30	16-03V-16086
45977G-30	16-03V-16087
45658L-30	16-03V-16088
45977G-30	16-03V-16089
45977G-30	16-03V-16090
45658L-30	16-03V-16091
45658L-30	16-03V-16092
45658M-30	16-03V-16093
45658M-30	16-03V-16094
45658M-30	16-03V-16095
45658L-30	16-03V-16098
45977G-30	16-03V-16099
45658M-30	16-03V-16100
45658L-30	16-03V-16102
45977G-30	16-03V-16103
45658L-30	16-03V-16105
45977G-30	16-03V-16106
45977G-30	16-03V-16107
45658L-30	16-03V-16108
45658L-30	16-03V-16109
45658M-30	16-03V-16110
45658M-30	16-03V-16111
45658L-30	16-03V-16114
45658L-30	16-03V-16115
45658L-30	16-03V-16116
45977G-30	16-03V-16117
45977G-30	16-03V-16118
45658L-30	16-03V-16119
45977G-30	16-03V-16120
45658L-30	16-03V-16121
45977G-30	16-03V-16122
45977G-30	16-03V-16124
45658L-30	16-03V-16125
45658L-30	16-03V-16127
45658L-30	16-03V-16128
45658L-30	16-03V-16129
45658L-30	16-03V-16130
45658L-30	16-03V-16131
45977G-30	16-03V-16134
45977G-30	16-03V-16135
45658L-30	16-03V-16136
45977G-30	16-03V-16137
45977G-30	16-03V-16138
45658L-30	16-03V-16139

Part No.	Serial No.
45658L-30	16-03V-16140
45658L-30	16-03V-16141
45658L-30	16-04V-16142
45658L-30	16-04V-16143
45977G-30	16-04V-16145
45658L-30	16-04V-16146
45658M-30	16-04V-16151
45658L-30	16-04V-16152
45658L-30	16-04V-16153
45658L-30	16-04V-16154
45977G-30	16-04V-16155
45658N-30	16-04V-16156
45658L-30	16-04V-16157
45658L-30	16-04V-16158
45658L-30	16-04V-16159
45658L-30	16-04V-16160
45658L-30	16-04V-16161
45658L-30	16-04V-16162
45977G-30	16-04V-16163
45658L-30	16-04V-16164
45658L-30	16-04V-16165
45658L-30	16-04V-16166
45977G-30	16-04V-16167
45977G-30	16-04V-16169
45658L-30	16-04V-16170
45977G-30	16-04V-16171
45658L-30	16-04V-16172
45658L-30	16-04V-16174
45658L-30	16-04V-16175
45658L-30	16-04V-16176
45658L-30	16-04V-16177
45658L-30	16-04V-16178
45658L-30	16-04V-16180
45658L-30	16-04V-16181
45658L-30	16-04V-16182
45977G-30	16-04V-16184
45977G-30	16-04V-16185
45977G-30	16-04V-16186
45977G-30	16-04V-16188
45658L-30	16-04V-16189
45658L-30	16-04V-16190
45658L-30	16-05V-16191
45658M-30	16-05V-16192
45658M-30	16-05V-16193
45658N-30	16-05V-16197
45977G-30	16-05V-16198

Part No.	Serial No.
45977G-30	16-05V-16199
45658L-30	16-05V-16200
45658L-30	16-05V-16201
45977G-30	16-05V-16202
45658L-30	16-05V-16203
45658M-30	16-05V-16204
45658L-30	16-05V-16206
45658L-30	16-05V-16207
45977G-30	16-05V-16208
45658L-30	16-05V-16209
45658L-30	16-05V-16210
45977G-30	16-05V-16212
45658L-30	16-05V-16213
45658L-30	16-05V-16214
45977G-30	16-05V-16216
45658L-30	16-05V-16217
45658L-30	16-05V-16223
45977G-30	16-05V-16226
45658L-30	16-05V-16227
45977G-30	16-05V-16228
45658L-30	16-05V-16229
45977G-30	16-05V-16232
45977G-30	16-05V-16233
45658M-30	16-05V-16234
45658L-30	16-05V-16235
45658L-30	16-05V-16236
45658L-30	16-05V-16237
45658M-30	16-05V-16238
45658L-30	16-06V-16240
45658N-30	16-06V-16241
45658L-30	16-06V-16242
45658L-30	16-06V-16243
45658L-30	16-06V-16244
45658M-30	16-06V-16245
45658L-30	16-06V-16246
45658L-30	16-06V-16248
45658L-30	16-06V-16249
45658L-30	16-06V-16252
45658L-30	16-06V-16253
45658L-30	16-06V-16254
45658L-30	16-06V-16255
45658L-30	16-06V-16258
45977G-30	16-06V-16263
45658L-30	16-06V-16264
45658L-30	16-06V-16267
45658L-30	16-06V-16268

Part No.	Serial No.
45658L-30	16-06V-16269
45977G-30	16-06V-16270
45658L-30	16-06V-16271
45658L-30	16-06V-16272
45658L-30	16-06V-16273
45977G-30	16-06V-16274
45977G-30	16-06V-16275
45658L-30	16-06V-16276
45658L-30	16-06V-16277
45658L-30	16-06V-16278
45977G-30	16-06V-16279
45658L-30	16-06V-16280
45658M-30	16-06V-16281
45658L-30	16-06V-16282
45977G-30	16-06V-16284
45658L-30	16-06V-16286
45658M-30	16-07V-16285
45658L-30	16-07V-16287
45658L-30	16-07V-16288
45658L-30	16-07V-16289
45977G-30	16-07V-16290
45658L-30	16-07V-16291
45658L-30	16-07V-16293
45658L-30	16-07V-16294
45977G-30	16-07V-16296
45658L-30	16-07V-16297
45658L-30	16-07V-16299
45658L-30	16-07V-16302
45658L-30	16-07V-16304
45658L-30	16-07V-16305
45658L-30	16-07V-16306
45658M-30	16-07V-16307
45658L-30	16-07V-16308
45658L-30	16-07V-16309
45977G-30	16-07V-16310
45658L-30	16-07V-16311
45658L-30	16-07V-16312
45977G-30	16-07V-16313
45977G-30	16-07V-16314
45658L-30	16-07V-16316
45977G-30	16-07V-16317
45658L-30	16-07V-16319
45658L-30	16-07V-16320
45977G-30	16-07V-16321
45658N-30	16-07V-16322
45658N-30	16-07V-16323

Part No.	Serial No.
45658N-30	16-07V-16325
45658N-30	16-07V-16327
45658N-30	16-07V-16328
45658L-30	16-07V-16333
45658L-30	16-07V-16334
45658L-30	16-07V-16335
45658L-30	16-08V-16337
45658L-30	16-08V-16338
45658L-30	16-08V-16339
45658M-30	16-08V-16340
45977G-30	16-08V-16342
45658L-30	16-08V-16343
45977G-30	16-08V-16344
45977G-30	16-08V-16345
45658N-30	16-08V-16346
45658L-30	16-08V-16349
45658L-30	16-08V-16351
45658L-30	16-08V-16353
45658M-30	16-08V-16354
45658L-30	16-08V-16357
45658L-30	16-08V-16358
45658L-30	16-08V-16359
45658L-30	16-08V-16360
45658L-30	16-08V-16362
45658L-30	16-08V-16363
45658M-30	16-08V-16364
45658N-30	16-08V-16365
45658M-30	16-08V-16370
45977G-30	16-08V-16373
45658L-30	16-08V-16374
45977G-30	16-08V-16375
45658M-30	16-08V-16376
45977G-30	16-08V-16378
45977G-30	16-08V-16379
45977G-30	16-08V-16380
45658M-30	16-08V-16381
45658M-30	16-08V-16382
45658L-30	16-08V-16383
45658L-30	16-09V-16384
45658L-30	16-09V-16385
45658L-30	16-09V-16387
45658L-30	16-09V-16388
45658L-30	16-09V-16389
45658L-30	16-09V-16390
45658L-30	16-09V-16391
45658L-30	16-09V-16392

Part No.	Serial No.
45658L-30	16-09V-16393
45658L-30	16-09V-16394
45658L-30	16-09V-16396
45658L-30	16-09V-16400
45658L-30	16-09V-16403
45977G-30	16-09V-16404
45658L-30	16-09V-16405
45977G-30	16-09V-16406
45977G-30	16-09V-16407
45658M-30	16-09V-16408
45658L-30	16-09V-16411
45658M-30	16-09V-16412
45658M-30	16-09V-16413
45658M-30	16-09V-16414
45977G-30	16-09V-16415
45977G-30	16-09V-16416
45658M-30	16-09V-16417
45658L-30	16-09V-16418
45658M-30	16-09V-16419
45658M-30	16-09V-16420
45658L-30	16-09V-16422
45977G-30	16-09V-16425
45977G-30	16-09V-16426
45658L-30	16-10V-16429
45658L-30	16-10V-16430
45658L-30	16-10V-16431
45658L-30	16-10V-16432
45977G-30	16-10V-16433
45658M-30	16-10V-16434
45658M-30	16-10V-16436
45658M-30	16-10V-16438
45658L-30	16-10V-16439
45658L-30	16-10V-16440
45658L-30	16-10V-16441
45658L-30	16-10V-16443
45658L-30	16-10V-16445
45658L-30	16-10V-16446
45658M-30	16-10V-16449
45658L-30	16-10V-16451
45658L-30	16-10V-16452
45658L-30	16-10V-16453
45658L-30	16-10V-16454
45977G-30	16-10V-16458
45658L-30	16-10V-16459
45658L-30	16-10V-16461
45658L-30	16-10V-16462

Part No.	Serial No.
45658M-30	16-10V-16464
45658L-30	16-10V-16465
45977G-30	16-10V-16466
45658L-30	16-10V-16468
45658L-30	16-10V-16469
45977G-30	16-10V-16470
45658N-30	16-10V-16472
45658L-30	16-10V-16473
45658L-30	16-10V-16474
45658L-30	16-11V-16476
45658L-30	16-11V-16477
45658L-30	16-11V-16478
45658L-30	16-11V-16479
45658L-30	16-11V-16480
45658L-30	16-11V-16481
45658L-30	16-11V-16482
45658L-30	16-11V-16483
45658L-30	16-11V-16484
45658L-30	16-11V-16485
45658L-30	16-11V-16486
45658L-30	16-11V-16487
45658L-30	16-11V-16488
45977G-30	16-11V-16490
45658L-30	16-11V-16491
45658M-30	16-11V-16493
45658L-30	16-11V-16495
45977G-30	16-11V-16496
45658N-30	16-11V-16497
45658M-30	16-11V-16498
45977G-30	16-11V-16501
45977G-30	16-11V-16503
45977G-30	16-11V-16504
45658L-30	16-11V-16505
45658N-30	16-11V-16510
45658L-30	16-11V-16512
45658L-30	16-11V-16513
45977G-30	16-11V-16514
45658L-30	16-11V-16515
45658L-30	16-11V-16516
45658L-30	16-11V-16517
45658L-30	16-11V-16521
45658N-30	16-11V-16522
45658M-30	16-12V-16519
45658L-30	16-12V-16523
45977G-30	16-12V-16524
45658L-30	16-12V-16525

Part No.	Serial No.
45658L-30	16-12V-16526
45658L-30	16-12V-16527
45658M-30	16-12V-16528
45658L-30	16-12V-16529
45658L-30	16-12V-16530
45658L-30	16-12V-16531
45658L-30	16-12V-16533
45658L-30	16-12V-16536
45658L-30	16-12V-16537
45977G-30	16-12V-16538
45658N-30	16-12V-16539
45658L-30	16-12V-16540
45658L-30	16-12V-16543
45658L-30	16-12V-16544
45977G-30	16-12V-16545
45977G-30	16-12V-16546
45977G-30	16-12V-16549
45658L-30	16-12V-16550
45977G-30	16-12V-16554
45658L-30	17-01V-16556
45658M-30	17-01V-16557
45658M-30	17-01V-16558
45658M-30	17-01V-16559
45658M-30	17-01V-16560
45658M-30	17-01V-16561
45977G-30	17-01V-16567
45658L-30	17-01V-16568
45658L-30	17-01V-16569
45658L-30	17-01V-16571
45658M-30	17-01V-16572
45658M-30	17-01V-16573
45658L-30	17-01V-16574
45658L-30	17-01V-16575
45658M-30	17-01V-16579
45658M-30	17-01V-16580
45658M-30	17-01V-16581
45658M-30	17-01V-16582
45658M-30	17-01V-16583
45658M-30	17-01V-16584
45658M-30	17-01V-16585
45658M-30	17-01V-16586
45658L-30	17-01V-16590
45658N-30	17-01V-16591
45658L-30	17-01V-16592
45658L-30	17-01V-16593
45658L-30	17-01V-16594

Part No.	Serial No.
45977G-30	17-01V-16595
45977G-30	17-01V-16596
45658L-30	17-02V-16598
45658L-30	17-02V-16599
45977G-30	17-02V-16600
45658L-30	17-02V-16601
45658L-30	17-02V-16602
45658L-30	17-02V-16605
45658L-30	17-02V-16606
45658L-30	17-02V-16607
45658L-30	17-02V-16608
45658L-30	17-02V-16609
45658L-30	17-02V-16610
45658N-30	17-02V-16611
45658L-30	17-02V-16612
45977G-30	17-02V-16613
45658L-30	17-02V-16614
45977G-30	17-02V-16616
45658L-30	17-02V-16618
45977G-30	17-02V-16621
45658L-30	17-02V-16622
45658L-30	17-02V-16629
45658L-30	17-02V-16630
45658L-30	17-02V-16631
45658L-30	17-02V-16632
45658L-30	17-02V-16633
45658M-30	17-02V-16634
45658N-30	17-02V-16635
45658M-30	17-03V-16639
45658N-30	17-03V-16642
45658N-30	17-03V-16644
45658M-30	17-03V-16649
45658M-30	17-03V-16650
45658M-30	17-03V-16652
45658M-30	17-03V-16654
45658M-30	17-03V-16667
45658M-30	17-03V-16683
45658M-30	17-03V-16686
45658M-30	17-04V-16696
45658M-30	17-04V-16698
45658M-30	17-04V-16699
45658M-30	17-04V-16724
45658M-30	17-05V-16743

Operational Safety

All dumping/cleaning/decanting operations require that the unit be positioned with the unit on firm level ground in a clear area away from any other equipment, personnel and overhead wires or obstructions. Bystanders must be kept at safe distance from the work area. Everyone should be clear of the rear area during dumping operations.

DUMPING PROCEDURE:

1. Decant if required.
2. Slowly open the rear door to full open.
3. Slowly raise the debris body as needed.
4. If equipped, use the vibrator as needed.
5. Verify the debris body is clear to lower and fully lower it.
6. Verify the rear door is clear to lower and fully lower it.

CLEANING PROCEDURE:

1. Slowly open the rear door enough to set the rear door safety props in place and slowly lower the door to the prop.
2. Slowly raise the debris body three feet up at the front.
3. Verify everyone is clear of the area before cleaning.
4. If equipped activate the washout system until clean.
5. If equipped, use the onboard handgun to clean up. Special attention should be used on the float balls, rear door seal and sealing surface.
6. This is a good time to perform a walk around inspection for leaks and damage.
7. Lower the debris body after it has fully drained and close the rear door.

WARNING

Crushing Hazard

NEVER leave body raised or partly raised while vehicle is unattended or while performing maintenance or service under body unless body is propped to prevent accidental lowering. [Always disengage PTO when hoist is not in use or when moving vehicle.] The debris body **MUST BE** empty for service work.

NEVER attempt to raise body when vehicle is on unlevel ground.

Rear door **MUST BE** opened before the front of the body is 3 feet above the chassis frame. Operator must remain at controls during all operations.



WARNING

Crushing hazard


NEVER go under a raised loaded debris body. To avoid injury or death:


- Empty debris body before service work.
- Always use the body prop when the debris body is raised for service.
- **NEVER** disconnect check valve with the debris body in raised position. Debris body will fall.
- **NEVER** remove the bleeder screw (if equipped) from cylinder with pressure on the cylinder. Debris body will fall. Only loosen bleeder screw to bleed air from cylinder.
- **NEVER** loosen or disconnect any hydraulic components while the hydraulic pump is running.



<p>⚠ WARNING</p>  <p>Crushing hazard. Serious injury or death can result from falling debris body. Never go under a raised debris body without the safety prop(s) in place. Debris body must be clean and empty for service work. On firm level ground raise the body above the height of the props. Tilt the prop(s) in place. Lower debris body until it just rests on the prop(s). Use all props. Shut down and lock out the entire system and chassis before servicing. Unload any items stored in debris body before using machine. Refer to manual for details. </p>	<p>⚠ WARNING</p>  <p>Crushing hazard. Serious injury or death can result from falling rear door. Never go under the rear door when open. Use door prop(s) or safety pin(s) to secure door before entering body, working under or around the door. Open the rear door to just clear the prop(s) and lower door until it just rests on the prop(s). On units that use a safety pin(s) open the door until the pin holes are aligned and insert pin. Use all props or pins. Shut down and lock out the entire system and chassis before servicing. Unload any items stored in debris body before using machine.</p>	<p>⚠ WARNING</p>  <p>Electrocution hazard. Serious injury or death can result from electrocution. Check for overhead wires and obstructions before raising debris body, opening rear door or raising optional equipment. Never leave debris body, rear door or optional equipment raised or partly raised while vehicle is unattended. Never move vehicle with debris body, rear door or optional equipment raised. Be aware of the vehicle's surroundings before operating any of the hydraulic functions to prevent death, injury or equipment damage.</p>
--	--	--

⚠ WARNING



Electrocution hazard
Serious injury or death can result from electrocution.
 Check for overhead wires and obstructions before raising or moving boom. Do not leave boom raised while vehicle is unattended. Do not move vehicle unless boom is in travel mode. Do not allow boom to contact the vehicle or any obstruction.
 Be aware of the vehicle's surroundings before operating any of the boom functions to prevent death, injury or equipment damage.
 Refer to SAFETY section in manual. 

1800149 rev A

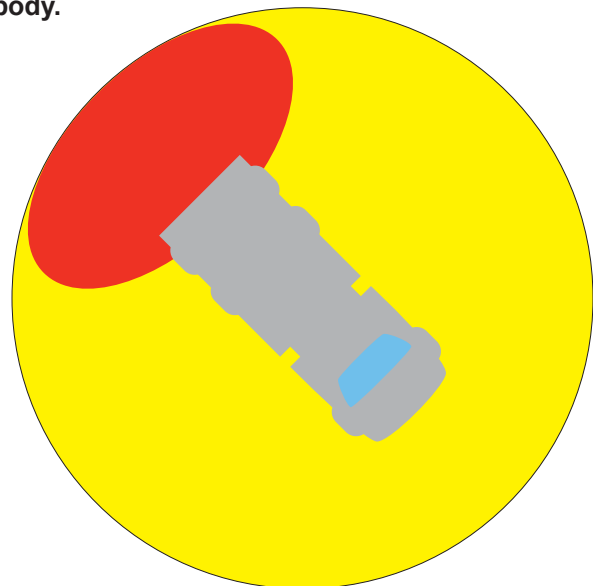
DECANTING PROCEDURE:

1. If not equipped with an optional valve turn on the vacuum system and operate in mid-range. Unfold the nylon flat-hose and let it hang down into the manhole opening. Turn off the vacuum to allow the liquids to flow out.
2. If equipped with an optional valve open the valve and drain until complete and close the valve. If the drain port plugs with debris the vacuum system can be used to pull the debris clear of the port.
3. To get the remaining liquid slowly raise the debris body three feet up at the front.
4. When done close the valve if equipped or lower the debris body.
5. Refold the hose and place it back into its bracket.

NOTICE

Safe Work Zone

Bystanders must be kept a minimum of 15 feet from the work area. NEVER stand directly behind the truck when raising or lowering the body.



Preparation

Empty and clean out the debris body.

Shut down the unit on level ground, set the brake, and follow lockout/tagout procedures.



WARNING

SAFETY WARNING for cylinder disassembly, inspection, and repair: Please read and understand all instructions before proceeding. Any person attempting to repair the cylinder must take reasonable safety precautions to prevent serious personal injury. If they feel they cannot safely follow the instructions or make the repairs they should not proceed.

NOTE: The procedure outlined below will normally take more than one person to safely complete. Also be prepared for the possibility of several quarts of oil spilling from the cylinder as it is removed from the truck.



WARNING

Crushing hazard

NEVER go under a raised loaded debris body. To avoid injury or death:

- Empty debris body before service work.
- Always use the body prop when the debris body is raised for service.
- NEVER disconnect check valve with the debris body in raised position. Debris body will fall.
- NEVER remove the bleeder screw (if equipped) from cylinder with pressure on the cylinder. Debris body will fall. Only loosen bleeder screw to bleed air from cylinder.
- NEVER loosen or disconnect any hydraulic components while the hydraulic pump is running.



PROCEDURE CONTINUED:

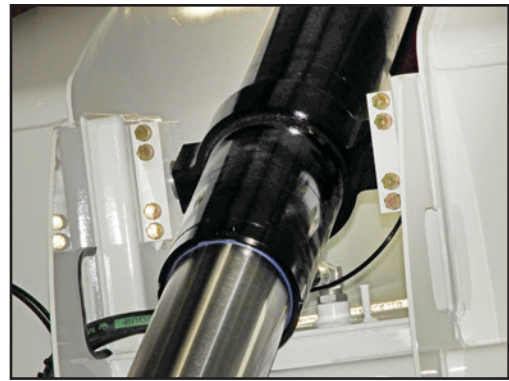
Instructions for removing the telescopic cylinder from the truck

The following is the general procedure, but will vary with some options and models.

Empty and clean out the debris body.

Shut down the unit on level ground, set the brake, and follow lockout/tagout procedures.

1. Raise the debris body and secure with the safety props. To prevent the debris body from going over center and tipping back over, the raised and propped debris body must be secured to the subframe with a chain before removing the hoist cylinder. Use a manual chain hoist or come along to take up the chain slack and tighten the body to the prop. Single axle units with their typically shorter debris bodies may go over center without the hoist cylinder installed.
2. Shut down the system
3. Secure the hoist cylinder with suitable straps
4. Disconnect the hoist cylinder from the debris body by removing the caps and bolts
5. Power up the unit and hydraulic system and power the hoist cylinder enough to clear the caps
6. Shut down the system
7. Disconnect and cap the hydraulic hoses and hoist cylinder ports. Be prepared for some oil spillage and clean up.
8. Attach the hoist to the straps on the cylinder and position to remove the lower pin
9. Remove the lower pin
10. Use the crane to remove the hoist cylinder from the unit.



NOTICE

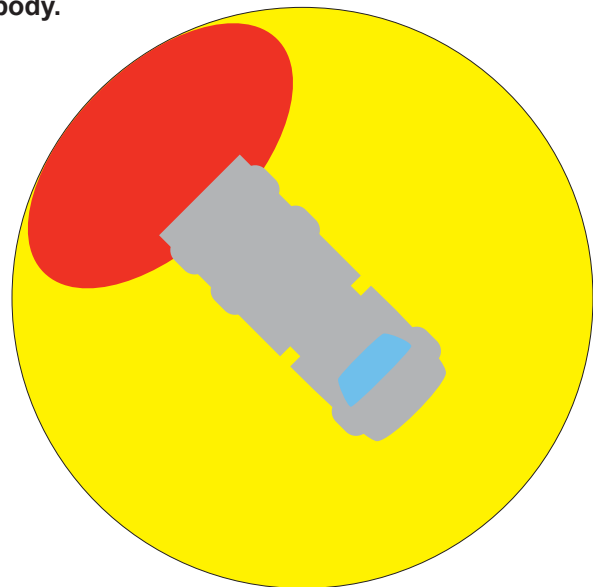
Safe Work Zone

Bystanders must be kept a minimum of 15 feet from the work area. NEVER stand directly behind the truck when raising or lowering the body.

Cylinder port fittings are listed here for reference.

Some original cylinder port sizes may differ from the replacement cylinder.

Cylinder Part No.	Extend Port Fitting	Retract Port Fitting
45658QA-30	12 ORBM - 8 JICM 45* 70524B-30	10 ORB - 8 JICM 90* Long 70537B-30
45977J-30	12 ORBM - 8 JICM 45* 70524B-30	10 ORB - 8 JICM 90* Long 70537B-30
45658PA-30	12 ORBM - 8 JICM 45* 70524B-30	10 ORB - 8 JICM 90* Long 70537B-30
45658R-30	12 ORBM - 8 JICM 45* 70524B-30	10 ORB - 8 JICM 90* Long 70537B-30



PROCEDURE CONTINUED:

Instructions for reinstalling the telescopic cylinder on the truck and then the purging of air from the cylinder Reinstalling the Cylinder

1. Using the crane, raise the hydraulic hoist cylinder in place over the lower cylinder blocks.
2. Reinstall the lower rod pin, fasteners and hoses.
3. Power up the unit and hydraulic system. Top off the hydraulic oil tank.
4. Use the crane to guide it up to the extended position and into the trunnion blocks on debris body. Monitor the hydraulic oil and add oil as required.
5. Reinstall the trunnion blocks and fasteners. At this point the hoist cylinder will not be fully filled with oil and will not function properly.
6. Raise the debris body with the crane enough to remove the safety props and lower the safety prop to its stored position.
7. Slowly lower the debris body using the crane and retracting the hoist cylinder as needed until the debris body has been fully lowered.
8. Remove the crane and any rigging



Air purging

9. Raise the debris body and cylinder to full extension and leave extended for several minutes to allow air to rise to the top of the cylinder.
10. Lower the debris body until the front of the debris body is approximately four inches off of the subframe.
11. Crack the bleeder valve open at this time. DO NOT remove the bleeder.

Note: Bleeding air from the lift cylinder can result in a discharge of hydraulic oil from the cylinder. Make sure the vehicle is in an appropriate area for cleanup. Make sure surrounding personnel are aware of the procedure.

12. Wait until all trapped air has escaped from the valve and a full stream of hydraulic oil is escaping from the valve.
13. At this point the cylinder is bled, and the bleeder valve can be closed.



Poor hoist performance.

Air in the lift cylinder can cause many problems including:

- Failure to lift
- Jerky hoist operation
- Lift cylinder won't raise to full extension
- Lift cylinder drops several inches when lowered

PROCEDURE CONTINUED:

Testing of cylinder after it is reinstalled.

This final step is to determine if the cylinder is operating properly after it has been purged of air.

Follow all safety instructions and warnings detailed in the operator manual or outlined on warning labels.

1. Confirm that the oil level in the hydraulic reservoir is within safe operating range.
2. Completely raise and lower the empty body two or three times. While doing this observe from a safe location on the ground the operation of the telescopic cylinder that lifts the body.
3. The telescopic cylinder should smoothly raise the body without unusual hesitation or binding. As the cylinder extends to raise the body the largest chromed stage of the telescopic cylinder should extend fully before the next smaller chromed stage begins to move. Two or more stages should not be moving at the same time when the cylinder is extending. If unusual movement of the stages is noted, repeat the air purge procedure and again completely raise and lower the empty body two or three times. Repeat a third time if necessary.
4. The telescopic cylinder should smoothly lower the body without sudden movement or binding. As the cylinder retracts to lower the body, the smallest chromed stage of the telescopic cylinder should retract fully before the next larger chromed stage begins to move. Two or more stages should not be moving at the same time when the cylinder is retracting. If unusual movement of the stages is noted, repeat the air purge procedure and again completely raise and lower the empty body two or three times. Repeat a third time if necessary.
5. Follow all safety instructions outlined in the operator manual to support body on the safety stand for final inspection of the cylinder.
6. Using a ladder and any necessary safety equipment, visually inspect the outside of the telescopic cylinder. Check for oil leakage from around the chromed stages or the hoses caused by the raising and lowering of the body.

WARNING

Crushing hazard

NEVER go under a raised loaded debris body. To avoid injury or death:

- **Empty debris body before service work.**
- **Always use the body prop when the debris body is raised for service.**
- **NEVER disconnect check valve with the debris body in raised position. Debris body will fall.**
- **NEVER remove the bleeder screw (if equipped) from cylinder with pressure on the cylinder. Debris body will fall. Only loosen bleeder screw to bleed air from cylinder.**
- **NEVER loosen or disconnect any hydraulic components while the hydraulic pump is running.**



REFERENCE - BOLT TORQUE

PURPOSE: THE PURPOSE OF THIS STANDARD IS TO PROVIDE A RECOMMENDED TORQUE FOR THREADED FASTENERS SUCH AS BOLTS, NUTS, CAP SCREWS, USED IN STEEL AND CAST IRON PARTS.

APPLICATION: THIS STANDARD IS INTENDED FOR FASTENERS OF GASKETED OR NON-GASKETED JOINTS, WITH OR WITHOUT STEEL WASHERS, AND WITH COARSE OR FINE THREADS. ALL SPECIAL CONDITIONS WHICH WILL SERIOUSLY AFFECT THE RELATIONSHIP BETWEEN TORQUE AND TENSION OF THE FASTENER, SUCH AS SPECIAL SURFACE FINISHES, LEAD WASHERS, AND FASTENERS SCREWED INTO MATERIAL OTHER THAN STEEL OR CAST IRON, WILL REQUIRE SEPARATE TORQUE VALUES TO BE INCLUDED IN THE APPLICABLE SPECIFICATION. THIS SPECIFICATION DOES NOT APPLY TO TORQUING OF HYDRAULIC CONNECTIONS.

MEAN OR BASIC RECOMMENDED TIGHTENING TORQUE FOR INCH FASTENER REQUIRING ±20% ACCURACY*. TORQUE VALUES ARE BASED ON NON-LUBRICATED THREADS.

NOM. DIA. INCH	TORQUE IN POUND FOOT (LB-FT)	
	GRADE 5	GRADE 8
1/4 - .250	9	12
5/16 - .312	18	25
3/8 - .375	30	45
7/16 - .438	50	70
1/2 - .500	75	110
9/16 - .562	110	155
5/8 - .625	155	215
3/4 - .750	270	385
7/8 - .875	435	620
1 - 1.000	660	930

NOM. DIA. INCH	TORQUE IN NEWTON METER (Nm)	
	GRADE 5	GRADE 8
1/4 - .250	12.2	16.3
5/16 - .312	24.4	33.9
3/8 - .375	40.7	61.0
7/16 - .438	68	95
1/2 - .500	101	149
9/16 - .562	150	210
5/8 - .625	210	290
3/4 - .750	365	520
7/8 - .875	590	840
1 - 1.000	895	1260

BOLT HEAD MARKING



GRADE 5



GRADE 8

*WRENCH TYPES WITH ±20% ACCURACY:

TORQUE CONTROLLED IMPACTS WITH TORSION BARS
HAND TORQUE WRENCHES
NUTRUNNERS - STALL AND SHUTOFF
NUTRUNNERS - ELECTRONIC SHUTOFF
AIR CYLINDER - STALL TYPE

NOTE: THIS DOES NOT INCLUDE AIR AND ELECTRIC IMPACT WRENCHES WHICH TYPICALLY ARE ±50% ACCURATE.

NOTE: NYLON LOCKING NUTS WILL BE TORQUED TO GRADE 5 STANDARDS

PURPOSE: THE PURPOSE OF THIS STANDARD IS TO PROVIDE A RECOMMENDED TORQUE FOR THREADED FASTENERS SUCH AS BOLTS, NUTS, CAP SCREWS, USED IN STEEL AND CAST IRON PARTS.

APPLICATION: THIS STANDARD IS INTENDED FOR FASTENERS OF GASKETED OR NON-GASKETED JOINTS, WITH OR WITHOUT STEEL WASHERS, AND WITH COARSE OR FINE THREADS. ALL SPECIAL CONDITIONS WHICH WILL SERIOUSLY AFFECT THE RELATIONSHIP BETWEEN TORQUE AND TENSION OF THE FASTENER, SUCH AS SPECIAL SURFACE FINISHES, LEAD WASHERS, AND FASTENERS SCREWED INTO MATERIAL OTHER THAN STEEL OR CAST IRON, WILL REQUIRE SEPARATE TORQUE VALUES TO BE INCLUDED IN THE APPLICABLE SPECIFICATION. THIS SPECIFICATION DOES NOT APPLY TO TORQUING OF HYDRAULIC CONNECTIONS.

MEAN OR BASIC RECOMMENDED TIGHTENING TORQUE FOR METRIC FASTENER REQUIRING ±20% ACCURACY*. TORQUE VALUES ARE BASED ON NON-LUBRICATED THREADS.

SIZE	TORQUE IN POUND FOOT (LB-FT)		
	GRADE 8.8	GRADE 10.9	GRADE 12.9
M3	0.4	1.3	1.5
M4	2.2	3.3	3.7
M5	4.5	6.5	7.5
M6	7.5	11.0	13.0
M8	18	30	33
M10	35	50	63
M12	65	95	110
M14	105	150	177
M16	160	235	277
M20	320	460	542
M24	550	790	937

SIZE	TORQUE IN NEWTON METER (Nm)		
	GRADE 8.8	GRADE 10.9	GRADE 12.9
M3	0.5	1.8	2.0
M4	3.0	4.5	5.0
M5	6	9	10
M6	10	15	18
M8	25	35	45
M10	50	70	85
M12	90	125	150
M14	140	200	240
M16	225	310	375
M20	435	610	735
M24	750	1050	1270

BOLT HEAD MARKING



8.8



10.9



12.9

*WRENCH TYPES WITH ±20% ACCURACY:

TORQUE CONTROLLED IMPACTS WITH TORSION BARS
HAND TORQUE WRENCHES
NUTRUNNERS - STALL AND SHUTOFF
NUTRUNNERS - ELECTRONIC SHUTOFF
AIR CYLINDER - STALL TYPE

NOTE: THIS DOES NOT INCLUDE AIR AND ELECTRIC IMPACT WRENCHES WHICH TYPICALLY ARE ±50% ACCURATE.

NOTE: NYLON LOCKING NUTS WILL BE TORQUED TO GRADE 8.8 STANDARDS

PROCEDURE CONTINUED:

Warranty claim must include:

- Cylinder serial number
- Truck VIN
- Truck hours (standard practice).
- Must include photo of the cylinder serial number.
- Cylinder recall paperwork will be sent once the warranty claim is processed.

Bulletin Type	Header	Length of Time	Photo Required
NHTSA Bulletins	Safety Recall	Indefinite	Completed repair

Warranty Coverage and Claim Submittal

Standard Repair Time (SRT) of **5** hrs and **0** min is allowed.
Travel time will be paid for repair only.

Use the following information when submitting a warranty claim:

PROCEDURE CONTINUED:

New Claim

Claim Type: Machine Claim

Machine Info

Serial Number*

Work Order Number*

Model

Brand

Service Hours*

Mileage*

Warranty Start Date*

Warranty End Date*

Date of Failure*

Date of Repair*

Ref Case No.

[Extended Warranty Policies](#)

Select Campaign

Select the cylinder part number used

Failure Details

Causal Part Number

Caused By

Causal Part Description

Fault Code

Description :
VACTOR -> 2100 -> HYDRAULICS -> CYLINDERS ->
DEBRIS BODY -> SB-0308 (2100+) Hoist Cylinder
Campaign

Service Details

Job Code	Service Technician	Standard Labor		Additional Labor		Reason	Requested Amount	Add
		Time (hrs min)	Amount	Time (hrs min)				
VACTOR->2100->HYDRAU	Keith Stevens-Direct C	5	0	0.00	0	0	0	<input type="button" value="Add"/>
VACTOR->2100->HYDRAULICS->CYLINDERS->DEBRIS BODY->SB-0308 (2100+) Hoist Cylinder Campaign->REMOVE & REPLACE								