

Rear Load Center Circuit Breaker Replacement

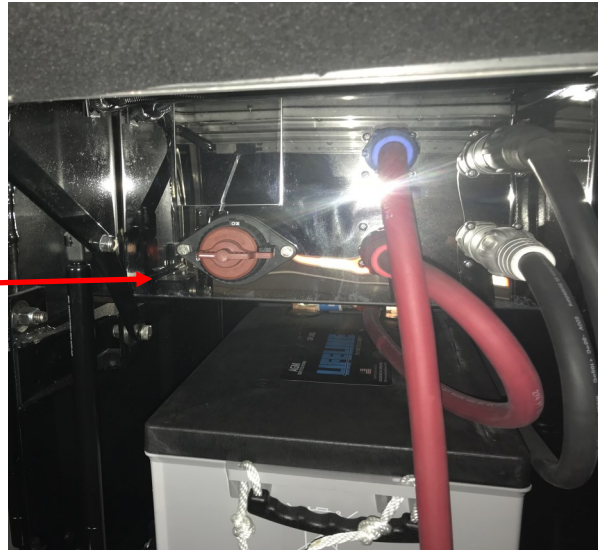
Tools required:

#2 phillips screwdriver

7/16 socket, 9/16 socket, ratchet, and short extension

1. Unplug shore power and ensure generator is off.

2. Turn off house battery disconnect at the passenger side fuel bay.

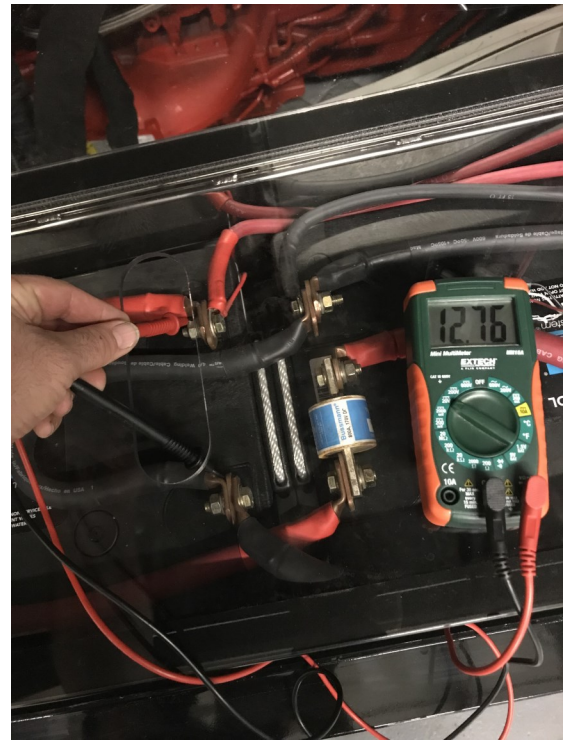


Note: If your coach is equipped with electric engine bay latches, ensure that the passenger side engine access door is open prior to turning off chassis batteries.

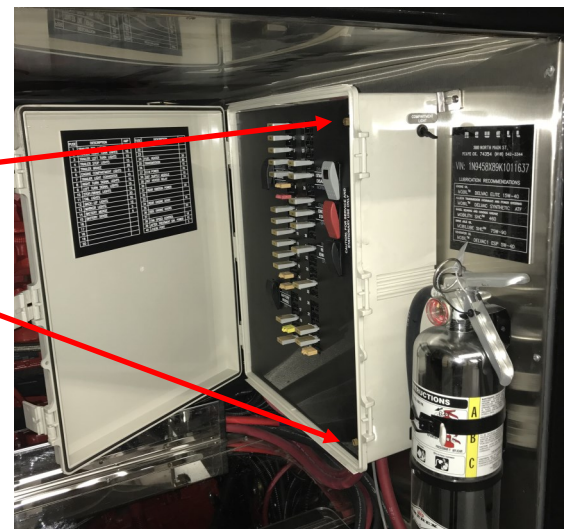


3. Turn off chassis battery disconnect at driver side shore cord access door.

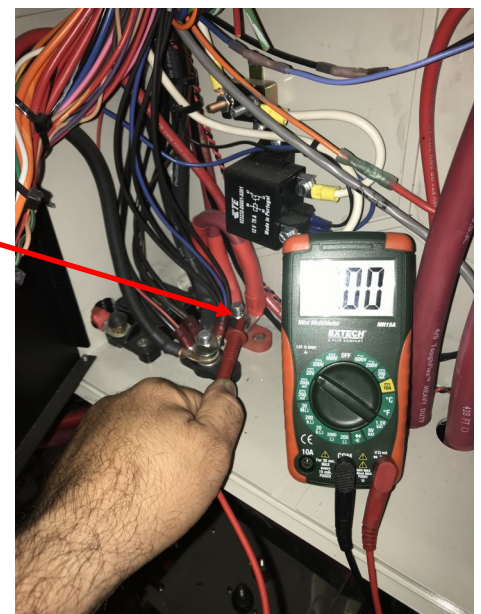
Caution: Although the chassis batteries are disconnected from the coach they are still charged. Care should be taken to avoid dropping tools onto battery terminals.



4. Open Rear Control Load Center and then loosen two thumb screws to access the circuit breaker.



5. Use a volt meter to test for 0 volts at this stud. If there is voltage, ensure that the house batteries are disconnected and try pushing the off button on the chassis disconnect again.



6. Replace this circuit breaker with the

**HI-AMP
Buss
120A
Waterproof
181120F**

It may be beneficial to loosen or remove the wires on this stud to gain better access to the breaker.

The breaker stud labeled BAT should be to the front of the coach and the stud labeled AUX should be to the rear and attached to the 2 AWG cable leaving the Rear Control Load Center.

