



Inspection Criteria for Gooseneck Cracking

TRAIL KING Industries, Inc.

Inspect webs near upper GN Pivot Pin as indicated by red arrows. All cracks will need to be evaluated by Trail King customer service to determine repair.

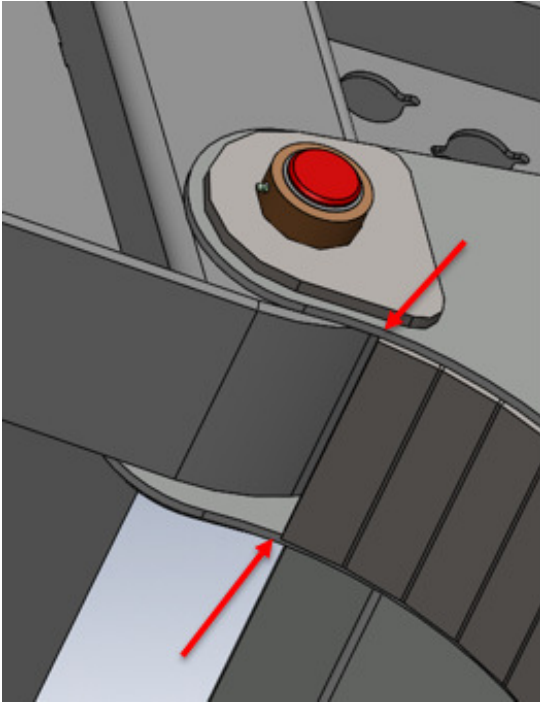


Figure 1 - Gen 1

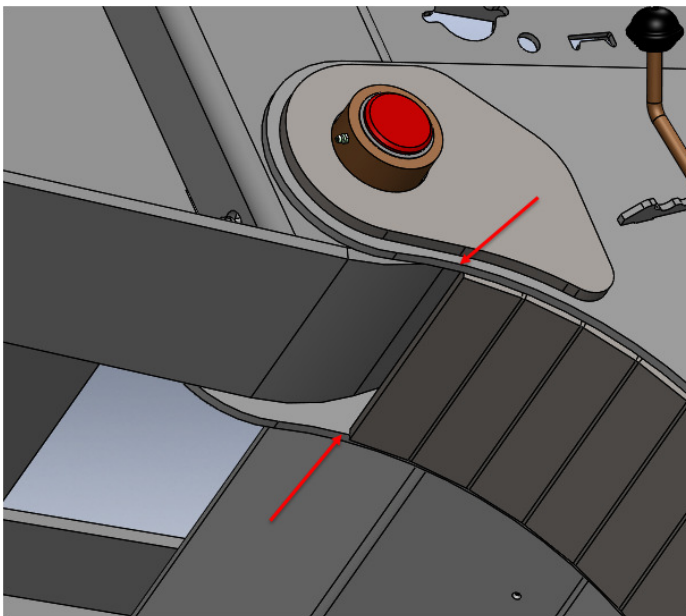
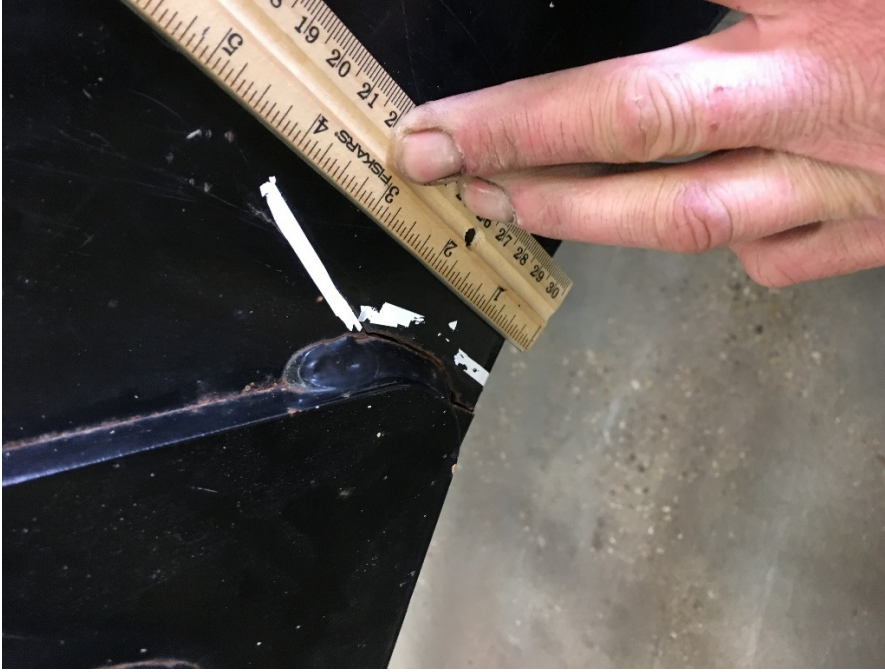


Figure 2 - Gen 2

Picture shown below shows cracking starting from outside.



Picture shown below shows cracking from inside.

