

SAFETY RECALL

SR17-82

Date	Expiration	Group	No.	Page
10.2017	NA	271		1(7)

ACCELERATOR PEDAL REPLACEMENT 9700 (B13R)

MODEL YEAR(S) AND VEHICLE SERIAL NUMBERS (VIN) INVOLVED

NOTICE TO SERVICE CENTERS	
<i>Verify vehicle eligibility by checking recall status with SAP or via ONLINE WARRANTY SYSTEM available on Service / Warranty tab of Prevest website.</i>	
Model	VIN
Volvo 9700 US/Can Model Year : 2017 - 2018	Vehicles with Allison transmissions From XX up to XX incl.
This recall does not necessarily apply to all the above-mentioned vehicles, some vehicles may have been modified before delivery. The owners of the vehicles affected by this recall will be advised by a letter indicating the Vehicle Identification Number (VIN) of each vehicle concerned.	

DESCRIPTION

On the vehicles affected by this recall, under certain conditions, the vehicle may not react when the accelerator pedal is pushed. For all vehicles involved, the accelerator pedal is replaced by a different accelerator pedal model.

MATERIAL

Order kit SR17-82 which includes the following parts:

Part No.	Description	Qty
23180950	ACCELERATOR PEDAL	1
23181346	WIRING HARNESS	1

Parts that may be required depending on vehicle condition:

Part No.	Description	Qty
946173	SCREW CAP HEXF M8-1.25x20 G8.8	1

PROCEDURE



DANGER

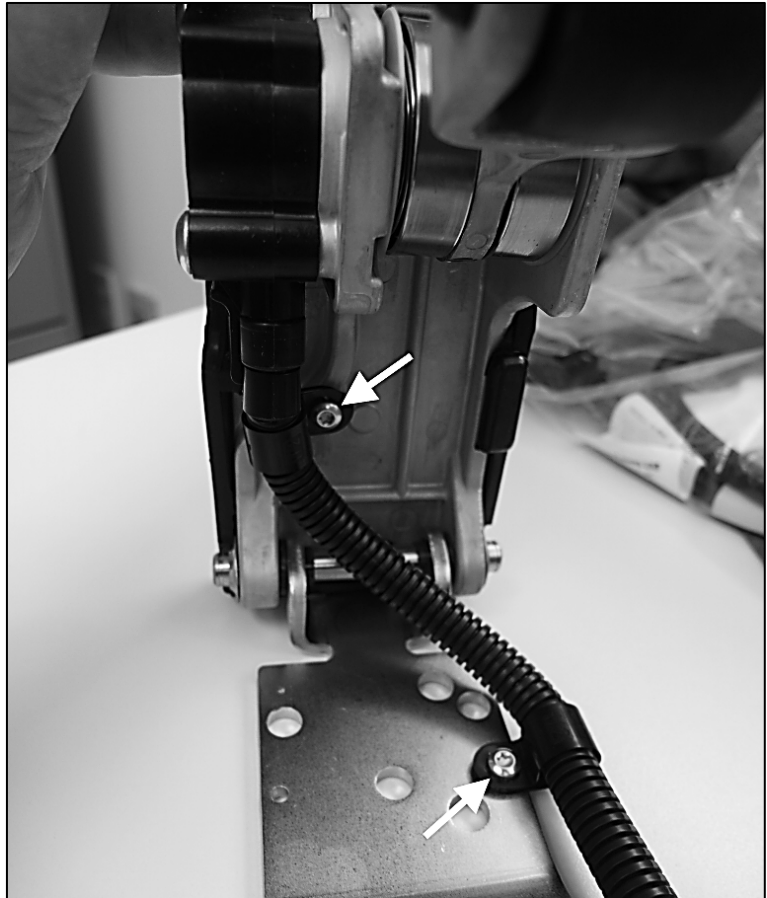
Park vehicle safely, apply parking brake, stop engine. In the battery box, set the battery cut-off switch to the OFF position prior to working on the vehicle.

ACCELERATOR PEDAL PREPARATION WORK

1. On the new accelerator pedal 23180950, remove and reserve the P-clamps and Torx screws.

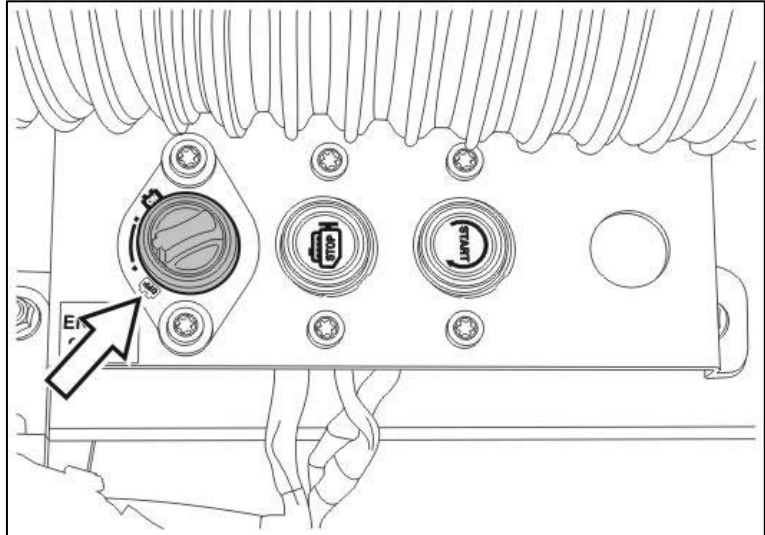
Unplug the existing harness from the pedal. Discard removed harness.

2. Connect supplied harness 23181346 to pedal.
3. Re-install P-clamps.



INSTALLATION ON THE VEHICLE

4. On the vehicle, make sure to turn off the master electrical disconnect switch.

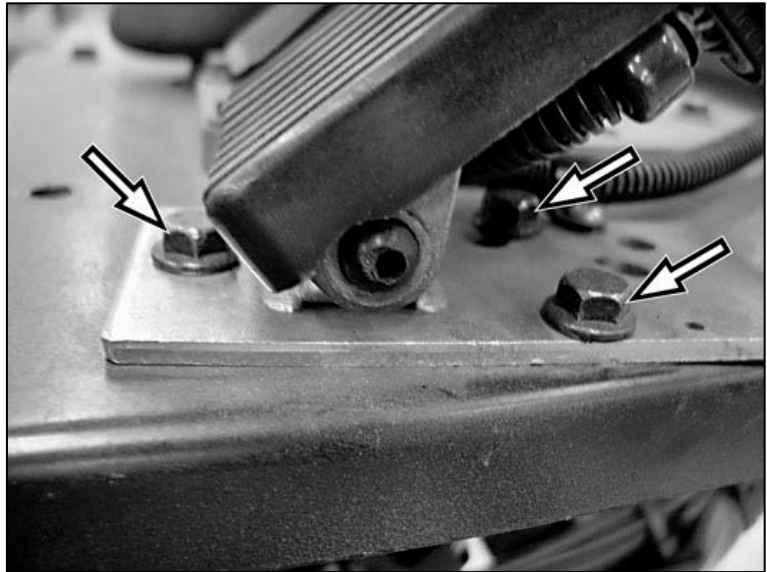


5. If present, move the floor mat aside.
6. Create some working room by lifting steering column completely and backing out the driver's seat



Date	Expiration	Group	No.	Page
10.2017	NA	271		4(7)

7. Remove accelerator pedal mounting screws. Keep for re-use.



8. Remove cable ties. Note arrangement for re-installation.



Date	Expiration	Group	No.	Page
10.2017	NA	271		5(7)

9. Remove accelerator pedal and keep for parts return process.

10. On the new pedal, connect interface harness 23181346 to vehicle connector.

11. Install the accelerator pedal.
Torque tighten the screws

Torque: 15-21 lb-ft (20-28 Nm)

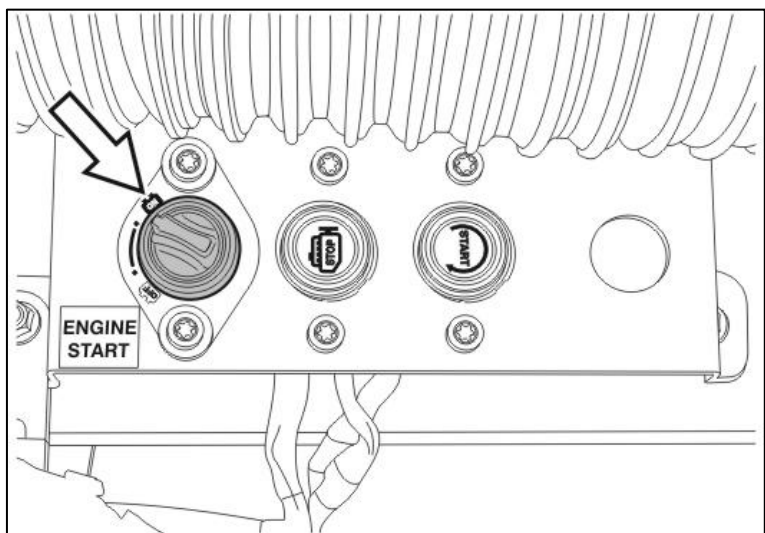
If screws are in bad condition,
replace by flange screw **946173**
M8-1.25x20 G8.8.



12. Re-install cable ties. Route harness identically as the removed pedal harness.
13. If present, fold the floor mat back again.



14. Turn the master electrical disconnect switch on.



Date	Expiration	Group	No.	Page
10.2017	NA	271		7(7)

15. Perform the VCADS-test: 27102-3 Accelerator pedal, test.
16. Start the engine and carry out a functional check.
17. Confirm all pedal related functions operate correctly: Kick down, transmission retarder, cruise control, etc.

PARTS / WASTE DISPOSAL

All replaced parts must be returned to Prevost according to the Return Shipping Instructions available on <https://www.prevostcar.com/content/warranty-documents> for full reimbursement. A copy of the warranty claim form must be enclosed with the shipment.

Discard waste according to applicable environmental regulations (Municipal/State[Prov.]/ Federal)

WARRANTY

This modification is covered by Prevost's normal warranty. We will reimburse you the parts and one hour fifteen minutes (1 1/4 h) of labor upon receipt of a completed A.F.A. Please submit claim via our Online Warranty System, available at www.prevostcar.com (under Service \ Warranty section). Use Claim Type: "Bulletin/Recall" and select "Safety Recall SR17-82".

OTHER

VBC Bulletin	C5289
Fail Code	03.08
Defect Code	09
Syst.Cond.	R
Causal Part	22760012

Access all our Service Bulletins on <http://prevostparts.volvo.com/technicalpublications/en/pub.asp> or scan the QR-Code with your smart phone.

E-mail us at technicalpublications_prev@volvo.com and type "ADD" in the subject to receive our warranty bulletins by e-mail.



Prevost engages in a continuous program of testing and evaluating to provide the best possible product. Volvo Bus, however, is not committed to, or liable for updating existing products.