



August 2025

**\*\*\* URGENT Airbag Safety Recall \*\*\***

1. **Urgent Airbag Safety Recall:**
  - Ford has issued a "**DO NOT DRIVE**" advisory for your vehicle due to defective airbags that may explode during a crash.
  - Exploding airbags can release sharp metal fragments, causing serious injury or death to the driver or passengers.
2. **Affected Vehicles:**
  - Your 2008 Mustang (VIN: [REDACTED]).
  - Owners are urged to check their vehicle's recall status and take immediate action.
3. **Repair and Support Options:**
  - Repairs for the defective airbags are **FREE**.
  - Complimentary mobile repair services, vehicle pick-up and delivery, and loaner vehicles may also be available upon request through participating dealers.
  - Owners can contact the Airbag Recall Team at [fordairbagsurvey.com](http://fordairbagsurvey.com) or **888-441-1120** for assistance.
4. **Safety Risks:**
  - The risk of airbag explosion increases as the vehicle ages.
  - Even minor crashes can result in severe injuries or fatalities due to defective airbags.
5. **Action Required:**
  - Owners must schedule recall repairs immediately and avoid driving the affected vehicles until repairs are completed.
  - If the vehicle is no longer owned, owners are encouraged to update their information at [fordairbagsurvey.com](http://fordairbagsurvey.com).
6. **Ford's Commitment:**
  - Ford emphasizes the importance of passenger safety and is actively reaching out to vehicle owners who have not yet responded to the recall notices.

Owners of affected Ford vehicles must prioritize safety by scheduling their **FREE** recall repairs **immediately**. Ford provides comprehensive support to ensure repairs are completed conveniently and at no cost.



P. O. Box 1904  
Dearborn, Michigan 48121-1904  
ELECTRONIC SERVICE REQUESTED

Presorted STD  
US Postage  
**PAID**  
R K C

**CONFIDENTIAL**



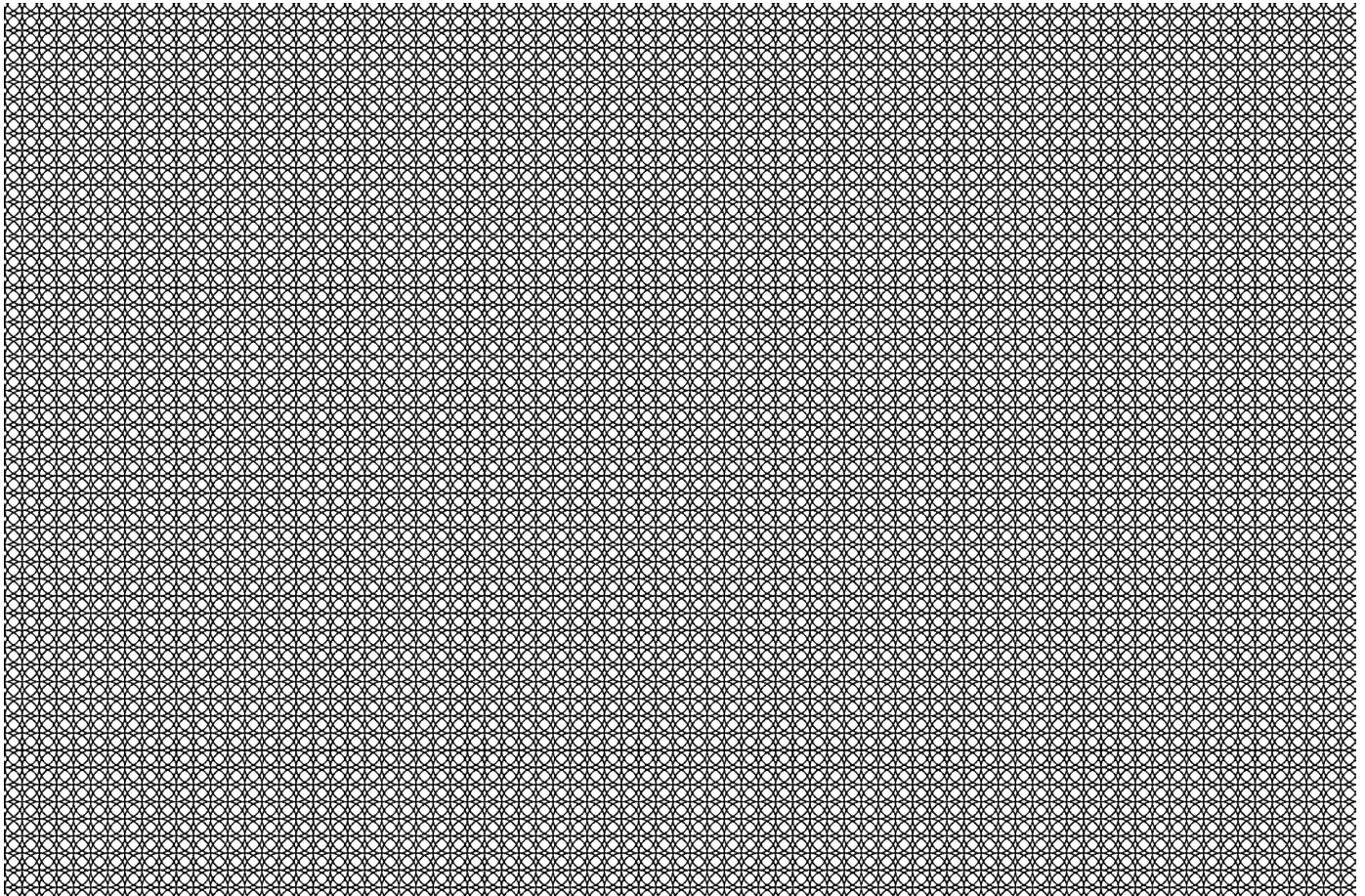
771348108297

A/2/000073/1



JOHN A. SAMPLE  
123 SAMPLE ST  
SAMPLE CITY, MI 12345-6789

**Do Not Drive your 2008 Mustang**



SEE OTHER SIDE FOR  
OPENING INSTRUCTIONS

SEE OTHER SIDE FOR  
OPENING INSTRUCTIONS

REMOVE THESE SIDE EDGES FIRST  
THEN FOLD, CREASE AND TEAR THIS STUB ALONG PERFORATION

REMOVE THESE SIDE EDGES FIRST  
THEN FOLD, CREASE AND TEAR THIS STUB ALONG PERFORATION