



R17YY

ADDITIONAL NOTICE

DATE: September 11, 2023
TO: Blue Bird Owners
SUBJECT: Recall R17YY, Vision Chassis Mounted Battery Box Supports

According to our records, we have not received confirmation the above referenced recall dated March 20, 2017, has been completed. A copy of Recall R17YY is attached. **Please reference the table outlined on Page 3 of the Recall Instructions for appropriate repair(s).**

Your buses affected by Recall R17YY are identified by Blue Bird body number and VIN under Section 2 on the enclosed cover sheet.

If this is the first time you have received notification of Recall R17YY, please read the enclosed notification carefully and follow the instructions provided. Recall R17YY must be completed, as soon as possible.

If you have already had R17YY performed on your affected buses, please complete and mail the enclosed recall reply sheet to us in the enclosed postage paid pink reply envelope so we may update our recall records. Be sure the reply sheet is filled out properly.

Parts to complete Recall R17YY must be obtained from Blue Bird Recall Administration via e-mail at campaignparts@blue-bird.com or return the yellow cover sheet to Blue Bird in the pink, self-addressed, postage prepaid envelope to receive parts at no charge. Be sure to provide a valid shipping address as UPS does not deliver to post office boxes. You should retain a copy of the reply sheet for your records.

Thank you for your prompt attention to this matter.



R17YY

IMPORTANT SAFETY RECALL NOTICE

**NHTSA Recall Number: 17V-100 School Bus
NHTSTA Recall Number: 17V-101 Non-School Bus**

March 20, 2017

Dear Blue Bird Owner:

Subject: RECALL R17YY, Vision Chassis Mounted Battery Box Supports

This important safety recall notice applies to your bus(es) identified by both Blue Bird Body Number and Vehicle Identification Number (VIN) on the enclosed yellow cover sheet.

This notice is sent to you in accordance with the requirements of the National Traffic and Motor Vehicle Safety Act.

Blue Bird Body Company is recalling certain model year 2015-2018 Vision School Buses manufactured from February 19, 2014, through March 3, 2017, and certain model year 2015-2018 Vision Non-School Buses manufactured from April 26, 2014, through February 24, 2017. The chassis mounted battery box support bracket(s) on certain Vision buses may develop cracks or fracture and could allow the battery box to separate from the chassis and fall. The design of the existing battery box support brackets may not be adequate in certain applications. If both the battery box support brackets were to completely fail and detach from the bus, it could become a road hazard increasing the risk of a crash.

Buses should be corrected immediately according to the enclosed instructions for Recall R17YY. Dealers should inspect for loose or missing fasteners and cracks at the bolt holes and the bend radius. Repair according to the matrix in the instructions. Repairs include removing braces on all units, adding reinforcements or replacing front and rear brackets on some units with new higher strength steel, based on the matrix in the instructions. **Parts are expected to be available the end of April, initially in limited quantities, at no cost to you.**

Your Blue Bird bus(es) affected by this recall are identified by both the Blue Bird Body Number(s) and Vehicle Identification Number(s) (VIN) on the enclosed yellow cover sheet. If you no longer own the subject bus(es), please complete the appropriate section of the yellow cover sheet and return to Blue Bird in the enclosed pink postage prepaid envelope.

Blue Bird recommends that you contact your local or nearest Blue Bird Dealer to arrange for this recall to be performed. The Dealer can perform the repairs, or arrange for repairs to be performed by a service repair facility authorized by the Dealer. However, you may elect to perform this recall yourself or pay another independent repair facility to perform this recall. A qualified technician should perform this recall.

BLUE BIRD BODY COMPANY
P.O. Box 937 – 402 Blue Bird Blvd – Fort Valley, Georgia – (478) 825-2021



BLUE BIRD

Blue Bird Body Company

R17YY

Page 2

If you elect to perform this recall yourself or pay another independent repair facility to perform this recall, complete and submit the Pink Owner's Recall Reply Sheet provided. The Reply Sheet includes a section for the owner to request reimbursement of the owner's labor or to request reimbursement for a labor invoice paid by the owner to an independent repair facility.

Repair Options and allowable labor times for this campaign:

Repair A (Inspection and Removal of Braces):

- Inspect brace, front battery box mounting bracket, and rear battery box mounting bracket for cracks at bolt holes and in the bend radius. Remove and discard braces, per attached instructions:
 - 0.25 hour (15 minutes)

Repair B (Reinforcement Kit):

- Time to install reinforcements, Kit 1, per attached instructions:
 - 1 hour (60 minutes)

Repair C (Reinforcement Kit and Front Bracket):

- Time to install reinforcements and front battery box frame mounting bracket, Kit 2, per attached instructions:
 - 1.25 hours (75 minutes) for replacing front bracket

Repair D (Replace Front and Rear Brackets):

- Time to install front and rear battery box frame mounting brackets, Kit 3, per attached instructions:
 - 2 hours (120 minutes)

When preparing the Pink Reply Sheet for each bus, select the appropriate labor allowance and enter the hourly labor rate:

- Repair A: 0.25 hour (15 minutes) labor allowance
- Repair A and B: 1.25 hour (75 minutes) labor allowance
- Repair A and C: 1.50 hour (90 minutes) labor allowance
- Repair A and D: 2.25 hour (135 minutes) labor allowance

Of course, if your Blue Bird Dealer performs the recall or arranged for repairs to be performed by a service facility authorized by the Dealer, the Blue Bird Dealer will notify Blue Bird about the completion of the recall.

Parts to complete Recall R17YY must be obtained from Blue Bird Recall Administration via e-mail at campaignparts@blue-bird.com or return the yellow cover sheet to Blue Bird in the pink, self-addressed, postage prepaid envelope to receive parts at no charge. Be sure to provide a valid shipping address as UPS does not deliver to post office boxes. You should retain a copy of the reply sheet for your records. Parts will not be available until the end of April, initially in limited quantities.

If the modifications directed by this notification were performed on your bus prior to the receipt of this recall notification, attach a copy of the work order/invoice. Mail the documents in the **pink** self-addressed postage prepaid envelope included with the pink reply coversheet to Blue Bird for warranty consideration. Reimbursements will be made in accordance with the requirements of the National Highway Transportation Safety Act, Title 49 Code of Federal Regulations, Parts 573 and 577.



BLUE BIRD

Blue Bird Body Company

Page 3

R17YY

Federal law requires that any vehicle lessor receiving this recall notice must forward a copy of this notice to the lessee within ten days.

If Blue Bird Body Company should fail to or is unable to remedy this condition without charge to you, you may contact:

**ADMINISTRATOR
NATIONAL HIGHWAY TRAFFIC SAFETY ADMINISTRATION
1200 NEW JERSEY AVENUE, SE
WASHINGTON, D.C. 20590**

Or, you may call The National Highway Traffic Safety Administration toll free at:
1-888-327-4236 TTY 1-800-424-9153 or go to: <http://www.safercar.gov>

Questions regarding this recall campaign should be directed to me at (478) 822-2242 or lisa.hancock@blue-bird.com.

Sincerely,

Lisa Hancock

Lisa Hancock
Corporate Recall Administrator
Blue Bird Body Company



VISION CHASSIS MOUNTED BATTERY BOX SUPPORT

RECALL

Models Affected: Certain 2015 through 2018 Model Year Vision Buses with Chassis Mounted Battery Box

ISSUE

The chassis mounted battery box support brackets may develop cracks or fracture and could allow the battery box to separate from the chassis and fall.

CORRECTIVE ACTION

Inspect for loose front brace and cracked support brackets. From matrix in instructions, select the correct repair for your bus which includes removing braces, and may include adding reinforcements or replacing front or front and rear support brackets.

PROCEDURE

WARNING: Always follow all Federal, State, Local and Shop safety standards and use proper safety equipment, and thoroughly read and understand all instructions before performing these procedures.

INSPECTION

1. Park bus on level surface, apply parking brake, turn off ignition key, and chock wheels.
2. Disconnect batteries.
3. Inspect front brace for loose or missing fasteners on the front battery box-to-floor brace. See Illustration on Page 2.
4. Inspect for cracks on the front battery box-to-body floor brace, front battery box frame mounting bracket, and rear battery box frame mounting brackets for cracks at bolt holes and in the bend.
5. Per the Battery Configuration in the bus and the inspection results, perform the appropriate repair per the matrix on Page 3.

BATTERY IDENTIFICATION



THREE GROUP 31 BATTERIES



THREE ODYSSEY BATTERIES

NOTE: Two 8D and Four Group Three 31 Battery Configurations are not shown.

RECALL CAMPAIGN - R I 7 Y



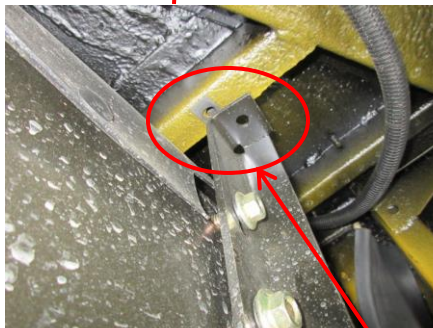
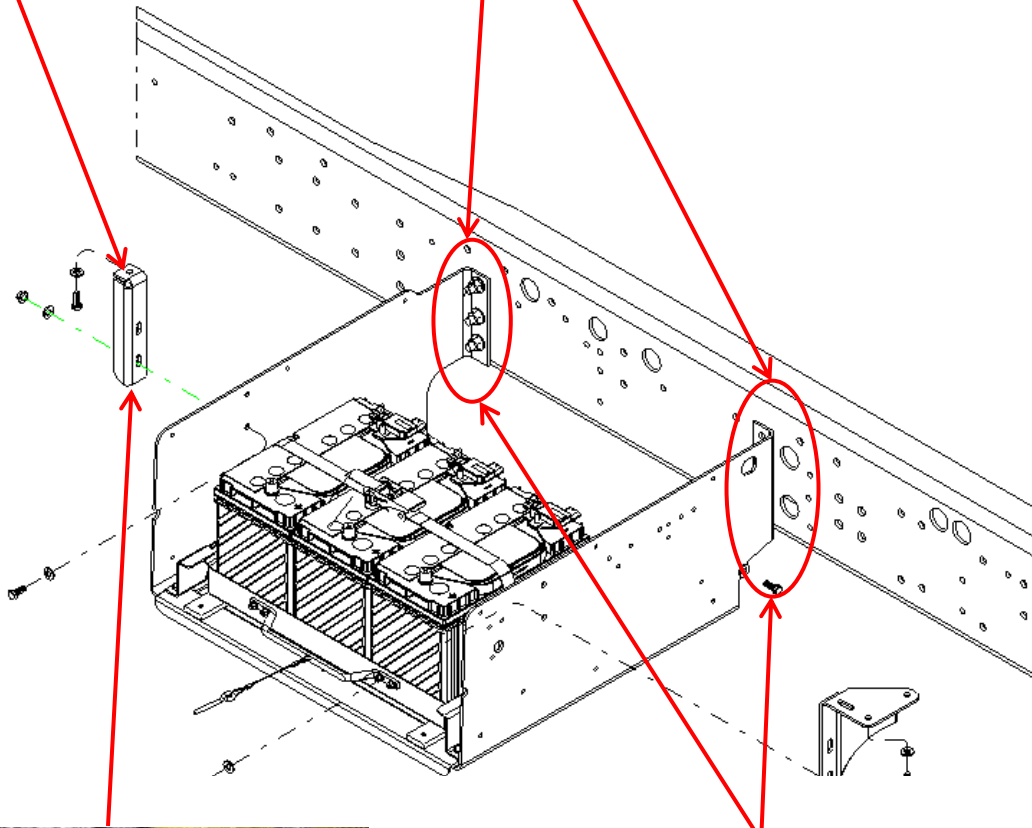
VISION CHASSIS MOUNTED BATTERY BOX SUPPORT

RECALL

INSPECTION

Inspect front brace for loose or missing fasteners and/or cracks.

Inspect front and rear frame battery box brackets for cracks around the fasteners and in the vertical bend.



Example shown of front brace missing fasteners at floor and loose at battery box attachment.



Crack may be in vertical bend.

Example shown of vertical crack at lower hole. Cracks may be vertical or horizontal to one or more holes.

RECALL CAMPAIGN R17Y



**VISION CHASSIS MOUNTED
BATTERY BOX SUPPORT**

RECALL

		<u>Choose Bus Battery Option</u>	
		Three Group 31	Two 8D, Three Odyssey, or Four Group 31
<u>Inspection Results</u>	NO cracks or missing or loose fasteners or history of loose fasteners	Repair A	Repair B
	Front battery box-to-body floor brace- History of loose fasteners or inspection shows missing or loose fasteners or any cracks	Repair B	Repair B
	Front battery box frame mounting bracket CRACKS- at <u>one</u> bolt hole or in the bends of bracket	Repair C	Repair C
	Front and Rear battery box frame mounting bracket CRACKS- at <u>more than one</u> bolt hole or bend of either bracket	Repair D	Repair D

Repair A:

Remove and discard the front and rear battery box-to-body floor braces

Repair B:

Install Kit 1 (reinforcement braces), remove and discard the front and rear battery box- to-body floor braces

Repair C:

Install Kit 2 (reinforcement braces, new high strength steel front battery box frame mounting bracket) , remove and discard the front and rear battery box-to-body floor braces

Repair D:

Install Kit 3 (new high strength steel front and rear battery box frame mounting brackets), remove and discard the front and rear battery box-to-body floor braces

R I 7 Y
--R E C A L L C A M P A I G N

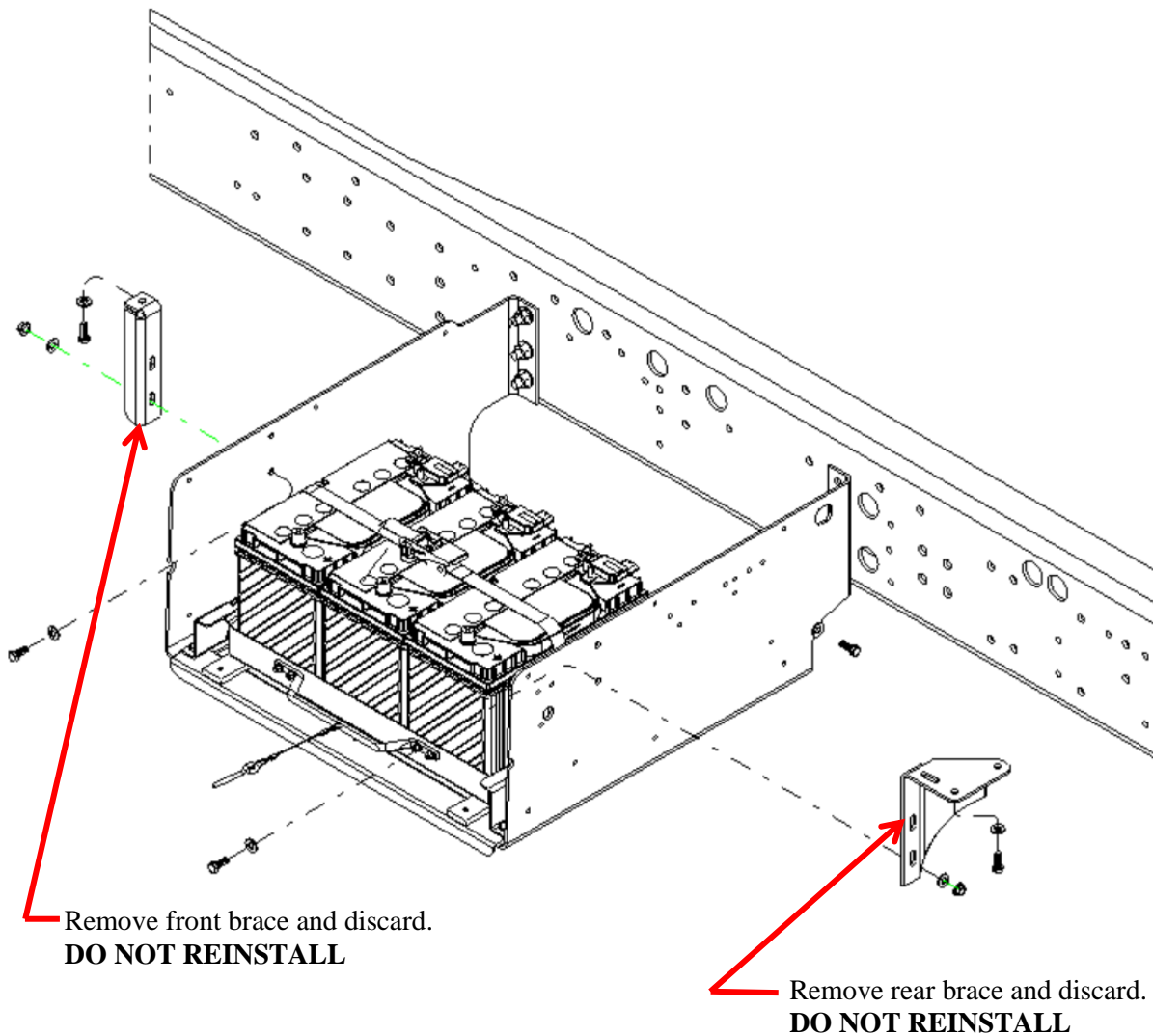


VISION CHASSIS MOUNTED BATTERY BOX SUPPORT

RECALL

REPAIR A

1. Park bus on level surface, apply parking brake, turn off ignition key, and chock wheels.
2. Disconnect Batteries.
3. Remove the front and rear braces and discard. **DO NOT REINSTALL.**
4. No further action required. Reconnect batteries and place back in service.



R I T Y

RECALL CAMPAIGN



VISION CHASSIS MOUNTED BATTERY BOX SUPPORT

RECALL

REPAIR B

REINFORCEMENTS INSTALLATION

WARNING: Always follow all Federal, State, Local and Shop safety standards and use proper safety equipment, and thoroughly read and understand all instructions before performing these procedures.

1. It is highly recommended that this repair be performed on a lift. If not on a lift, park bus on level surface, apply parking brake, turn off ignition key, and chock wheels.
2. Disconnect batteries.
3. Support the batteries and battery tray by placing jack(s) and required supports underneath the battery tray before and during the procedure.
4. Loosen the fasteners for the front and rear braces, but **DO NOT REMOVE** at this time. See Illustration on Page 7.
5. Remove and discard the front three 1/2 inch capscrews, flat washers, and locknuts that attach the front frame battery bracket to the frame rail.
6. Using a pry bar, move the front frame battery bracket toward the outside of the body approximately 1/4 inch.
7. Slide the front (LH) reinforcement bracket 10054519 between the outside of the frame rail and the front frame battery bracket. Align holes and install new 1/2 inch capscrews 00803239, new hardened flat washers 01003045 on the inside of frame rail and inside of front frame battery bracket, and new 1/2 inch locknuts 00850800. Torque 1/2 inch to 54 to 58 Ft. Lbs.
8. Using the new reinforcement bracket as a guide, drill six (6) 3/8 inch diameter holes. Use a drill set stop collar or shield on the inside next to the batteries and cables to prevent damages to batteries and/or cables. **DO NOT DRILL** through batteries and/or battery cables.
9. Install six (6) 3/8 inch capscrews 00559195, flat washers 01107085, and flange locknuts 00543934. Install one (1) 1/4 inch capscrew 00870477, flat washer 01991108, and locknut 02001345. Torque 3/8 inch to 29 to 33 Ft. Lbs. and the 1/4 inch to 96 to 108 In. Lbs.

R I 7 Y

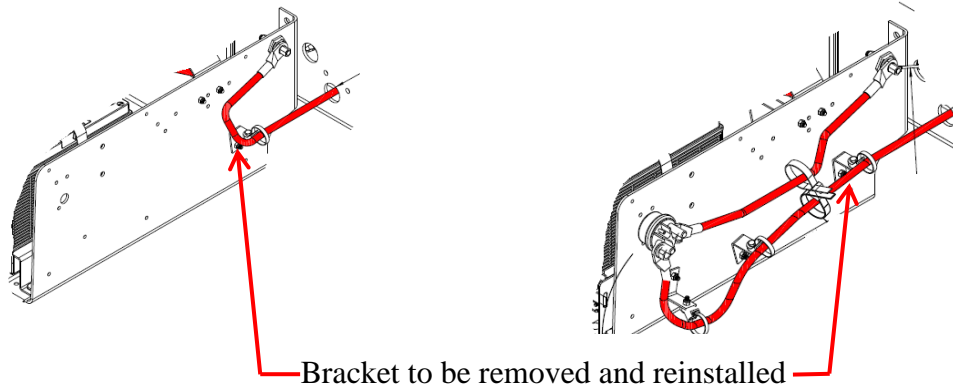
RECALL CAMPAIGN



VISION CHASSIS MOUNTED BATTERY BOX SUPPORT

RECALL

REPAIR B



Rear Frame Battery without
Battery Disconnect Switch

Rear Frame Battery with Battery
Disconnect Switch

10. On rear frame battery bracket, remove the bracket that supports the battery cable and discard fasteners.
11. Remove and discard the rear three 1/2 inch capscrews, flat washers, and locknuts that attach the rear frame battery bracket to the frame rail.
12. Using a pry bar, move the rear frame battery bracket toward the outside of the body approximately 1/4 inch.
13. Slide the rear (RH) reinforcement bracket 10054518 between the outside of the frame rail and the rear frame battery bracket. Align holes and install new 1/2 inch capscrews 00803239, new hardened flat washers 01003045 on the inside of frame rail and inside of rear frame battery bracket, and new 1/2 inch locknuts 00850800. Torque 1/2 inch to 54 to 58 Ft. Lbs.
14. Using the new reinforcement bracket as a guide, drill five (5) 3/8 inch diameter holes. Use a drill set stop collar or shield on the inside next to the batteries and cables to prevent damages to batteries and/or cables. **DO NOT DRILL** through batteries and/or battery cables.
15. Install five (5) 3/8 inch capscrews 00559195, flat washers 01107085 and flange locknuts 00543934. Install two (2) 1/4 inch capscrews 00870477, flat washers 01991108, and locknuts 02001345. Torque 3/8 inch to 29 to 33 Ft. Lbs. and the 1/4 inch to 96 to 108 In. Lbs.
16. Reinstall the rear battery cable support bracket that was removed in Step 10; use new 1/2 inch fasteners for attaching the battery cable bracket to the rear of the box.
17. **IMPORTANT:** After the front and rear reinforcements have been installed and all the fasteners torqued, remove and discard both front and rear braces that were loosened in Step 4. **DO NOT REINSTALL** front and rear braces.
18. Remove battery tray supports, reconnect batteries, and place bus back in service.

R I 7 Y

RECALL CAMPAIGN

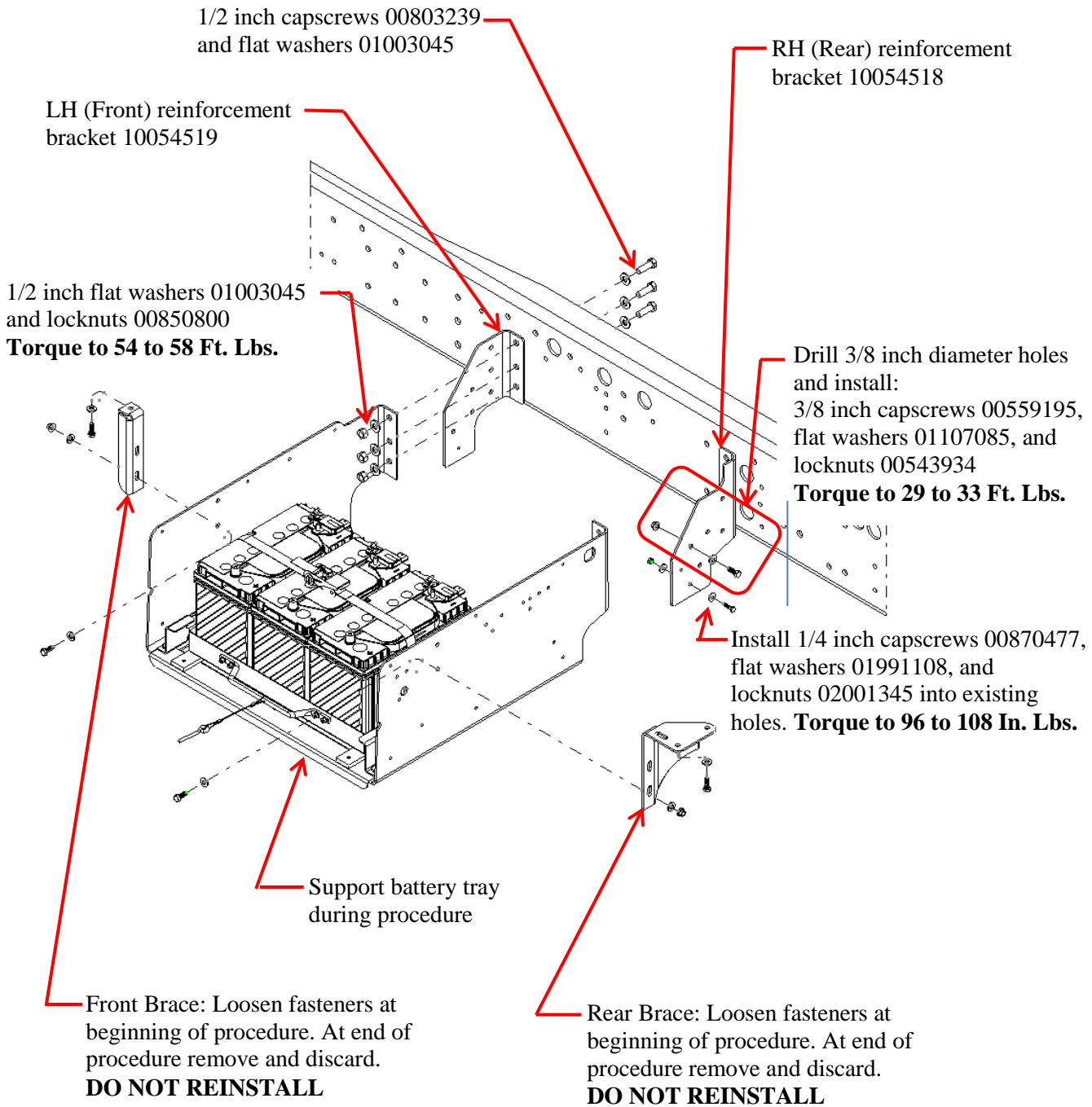


VISION CHASSIS MOUNTED BATTERY BOX SUPPORT

RECALL

REPAIR B

REINFORCEMENTS INSTALLATION



RECALL CAMPAIGN R17Y



VISION CHASSIS MOUNTED BATTERY BOX SUPPORT

RECALL

REPAIR C

INSTALL REINFORCEMENTS AND FRONT BATTERY BOX FRAME MOUNTING BRACKET

WARNING: Always follow all Federal, State, Local and Shop safety standards and use proper safety equipment, and thoroughly read and understand all instructions before performing these procedures.

1. It is highly recommended that this repair be performed on a lift. If not on a lift, park bus on level surface, apply parking brake, turn off ignition key, and chock wheels.
2. On the bench, assembly install new high strength steel front frame battery bracket 10049663 and front (LH) reinforcement bracket 10054519 together with two (2) 1/2 inch capscrews 00803239 and standard nuts (not included in kit) and tighten nuts.
3. Using the front (LH) reinforcement bracket 10054519 as a guide, drill six (6) 3/8 inch diameter holes.
4. Install six (6) 3/8 inch capscrews 00559195, flat washers 01107085, and flange locknuts 00543934. Install one (1) 1/4 inch capscrew 00870477, flat washer 01991108, and locknut 02001345. Leave all fasteners loose; do not torque until assembly has been installed on the chassis.
5. Remove two (2) 1/2 inch capscrews 00803239 and standard nuts (not included in kit) nuts. Reuse two (2) 1/2 inch capscrews 00803239 to install assembly to frame rail.

BENCH ASSEMBLY



Temporary install two 1/2 inch capscrews with standard nuts and tighten. Drill six 3/8 inch diameter holes using the reinforcement as guide.



Install all the fasteners attaching the reinforcement to the front frame battery bracket and leave loose until installed onto chassis frame.

R I T Y

RECALL CAMPAIGN



VISION CHASSIS MOUNTED BATTERY BOX SUPPORT

RECALL

REPAIR C (Front)

INSTALL REINFORCEMENTS AND FRONT BATTERY BOX FRAME MOUNTING BRACKET

6. Disconnect batteries.
7. Support the batteries and battery tray by placing jack(s) and required supports underneath the battery tray before and during the procedure.
8. Loosen the fasteners for the front and rear braces. Remove and discard front brace, **DO NOT REINSTALL**. See Illustration on Page 10. Do Not Remove rear brace at this time. See Illustration on Page 12.
9. Remove and discard the front three 1/2 inch capscrews, flat washers, and locknuts that attach the front frame battery bracket to the frame rail.
10. Remove and discard the 3/8 inch nuts that attach battery tray to the front frame battery bracket.
11. Remove the rubber pins that attach the top to the front frame battery bracket.
12. If the bus has an optional closeout, remove and retain fasteners for the close out to front frame battery bracket.
13. Remove the existing front frame battery bracket and install new high strength steel front frame battery bracket assembly from Steps 2, 3, and 4 above. Install new 1/2 inch capscrews 00803239, new hardened flat washers 01003045 on the inside of frame rail and inside of front frame battery bracket, and new 1/2 inch locknuts 00850800. Torque 1/2 inch to 54 to 58 Ft. Lbs.
14. Torque 3/8 inch to 29 to 33 Ft. Lbs. and the 1/4 inch to 96 to 108 In. Lbs.
15. Attach battery tray to front frame battery bracket and install new 3/8 inch locknuts 00543934. Torque 3/8 inch to 29 to 33 Ft. Lbs.
16. If the bus has an optional closeout, reinstall retained fasteners for the close out to front frame battery bracket.
17. Attach top to front frame battery bracket with rubber pin 01160399.

RECALL

RECALL CAMPAIGN

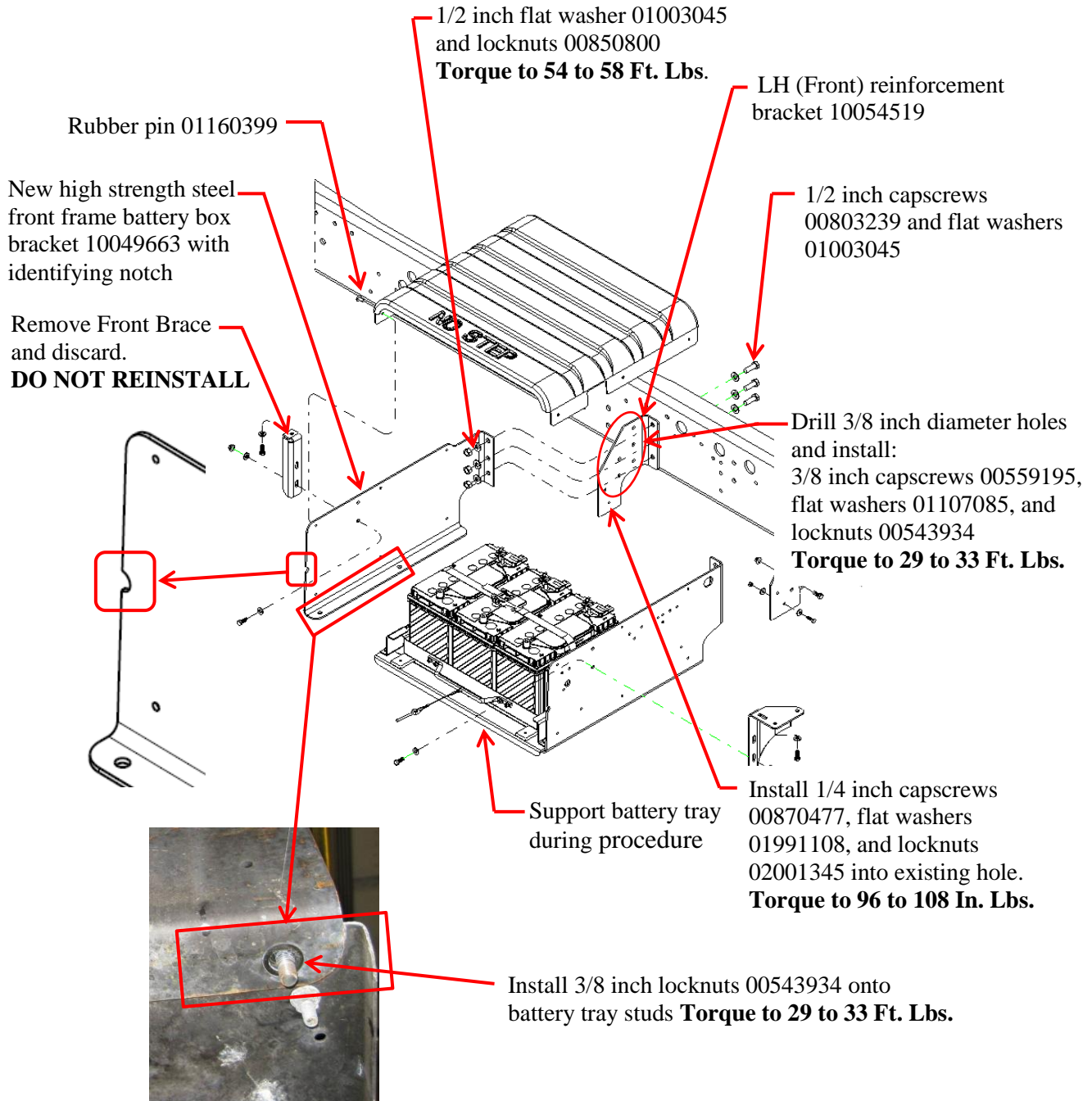


VISION CHASSIS MOUNTED BATTERY BOX SUPPORT

RECALL

REPAIR C (Front)

INSTALL FRONT REINFORCEMENT AND FRONT BATTERY BOX FRAME MOUNTING BRACKET



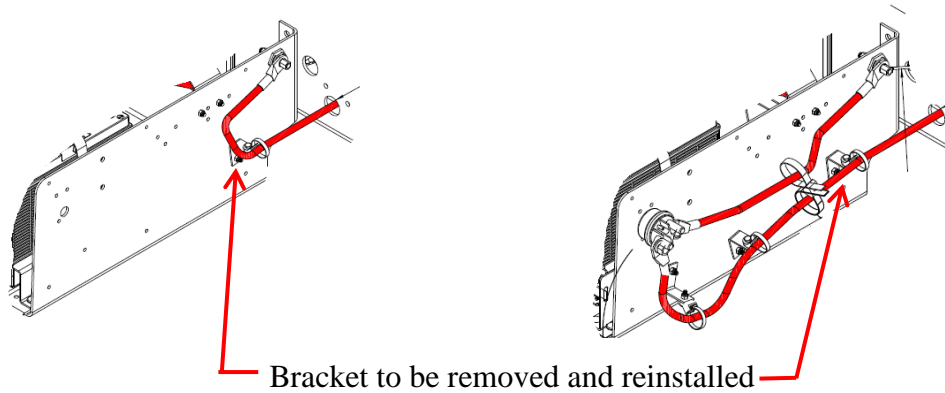
RECALL CAMPAIGN R17Y



VISION CHASSIS MOUNTED BATTERY BOX SUPPORT

RECALL

REPAIR C (Rear)



Rear Frame Battery without
Battery Disconnect Switch

Rear Frame Battery with
Battery Disconnect Switch

18. On rear frame battery bracket, remove the bracket that supports the battery cable and discard fasteners.
19. Remove and discard the rear three 1/2 inch capscrews, flat washers, and locknuts that attach the rear frame battery bracket to the frame rail. See Illustration on Page 12.
20. Using a pry bar, move the rear frame battery bracket toward the outside of the body approximately 1/4 inch.
21. Slide the rear (RH) reinforcement bracket 10054518 between the outside of the frame rail and the rear frame battery bracket. Align holes and install new 1/2 inch capscrews 00803239, new hardened flat washers 01003045 on the inside of frame rail and inside of rear frame battery bracket, and new 1/2 inch locknuts 00850800. Torque 1/2 inch to 54 to 58 Ft. Lbs.
22. Using the new reinforcement bracket as a guide, drill five (5) 3/8 inch diameter holes. Use a drill set stop collar or shield on the inside next to the batteries and cables to prevent damages to batteries and/or cables. **DO NOT DRILL** through batteries and/or battery cables.
23. Install five (5) 3/8 inch capscrews 00559195, flat washers 01107085, and flange locknuts 00543934. Install two (2) 1/4 inch capscrews 00870477, flat washers 01991108, and locknuts 02001345. Torque 3/8 inch to 29 to 33 Ft. Lbs. and the 1/4 inch to 96 to 108 In. Lbs.
24. Reinstall the rear battery cable support bracket that was removed in Step 15; use new 1/4 inch fasteners for attaching the battery cable bracket to the rear of the box.
25. After the front and rear reinforcements have been installed and all the fasteners torqued, remove and discard rear brace that was loosened in Step 8. **DO NOT REINSTALL** front and rear braces.
26. Remove battery tray supports, reconnect batteries and place bus back in service.

R I 7 Y

RECALL CAMPAIGN



VISION CHASSIS MOUNTED BATTERY BOX SUPPORT

RECALL

REPAIR C (Rear)

INSTALL REINFORCEMENTS AND FRONT BATTERY BOX FRAME MOUNTING BRACKET

RECALL CAMPAIGN R17Y

1/2 inch flat washers 01003045 and locknuts 00850800
Torque to 54 to 58 Ft. Lbs.

1/2 inch capscrews 00803239 and flat washers 01003045
(Note: Same fasteners for both front and rear)

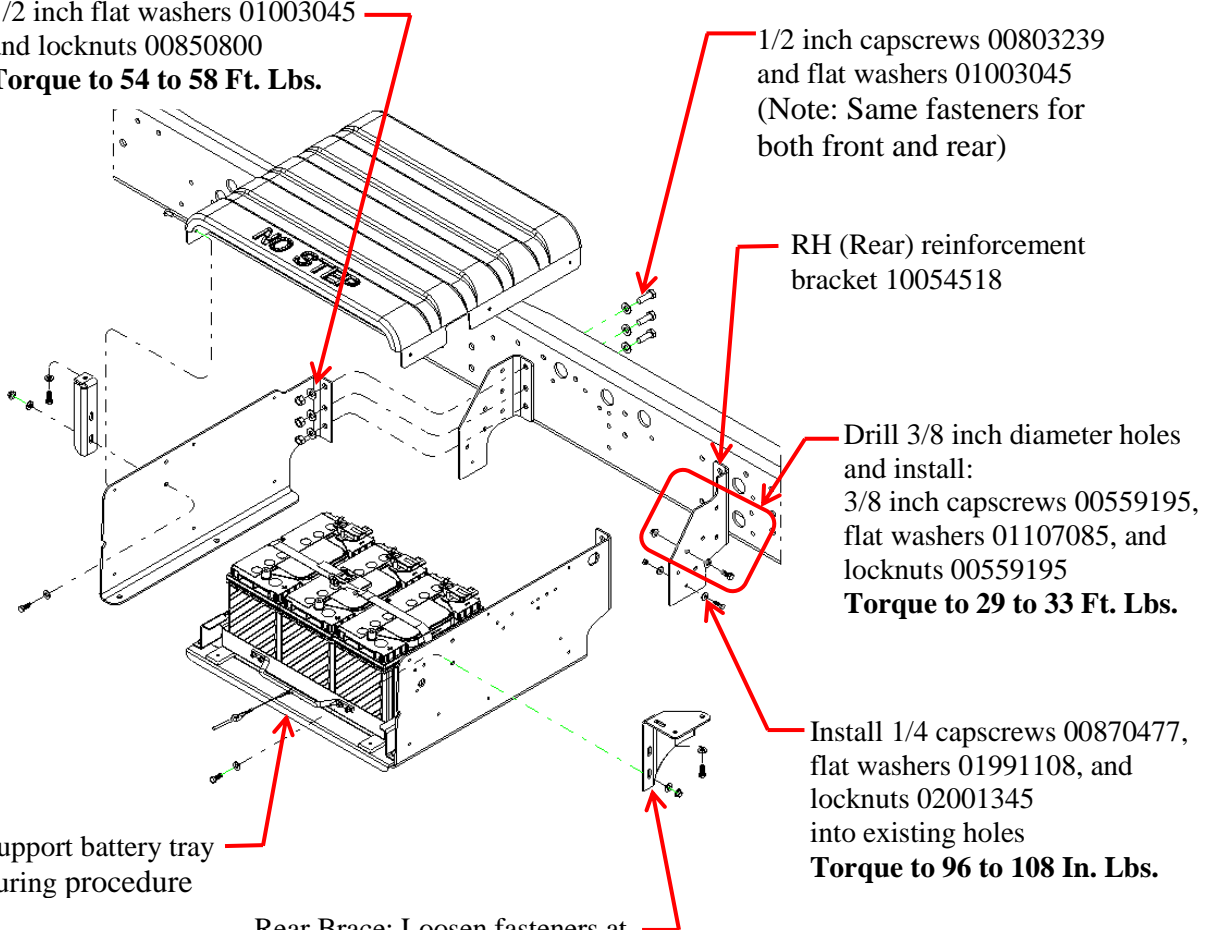
RH (Rear) reinforcement bracket 10054518

Drill 3/8 inch diameter holes and install:
3/8 inch capscrews 00559195, flat washers 01107085, and locknuts 00559195
Torque to 29 to 33 Ft. Lbs.

Install 1/4 capscrews 00870477, flat washers 01991108, and locknuts 02001345 into existing holes
Torque to 96 to 108 In. Lbs.

Support battery tray during procedure

Rear Brace: Loosen fasteners at beginning of procedure. At end of procedure remove and discard.
DO NOT REINSTALL





VISION CHASSIS MOUNTED BATTERY BOX SUPPORT

RECALL

REPAIR D (Front)

INSTALL FRONT AND REAR BATTERY BOX FRAME MOUNTING BRACKETS

WARNING: Always follow all Federal, State, Local and Shop safety standards and use proper safety equipment, and thoroughly read and understand all instructions before performing these procedures.

1. It is highly recommended that this repair be performed on a lift. If not on a lift, park bus on level surface, apply parking brake, turn off ignition key, and chock wheels.
2. Disconnect batteries.
3. Support the batteries and battery tray by placing jack(s) and required supports underneath the battery tray before and during the procedure.
4. Loosen the fasteners for the front and rear braces but **DO NOT REMOVE** at this time. See Illustration on Page 15.
5. Remove and discard the front three 1/2 inch capscrews, flat washers, and locknuts that attach the rear frame battery bracket to the frame rail.
6. Remove and discard the two nuts that attach the front frame battery bracket to the battery tray.
7. Remove the rubber pins that attach the top to the front frame battery bracket.
8. Remove the front brace and discard. **DO NOT REINSTALL** front brace.
9. If the bus has an optional closeout, remove fasteners for the closeout that attach to the front bracket.
10. Remove the existing front frame battery bracket and replace with new high strength steel frame battery bracket 10049663. NOTE: New front high strength steel frame battery bracket 10049663 has a **notch** on the outer edge to identify the new high strength bracket and the old bracket does not. Align holes and install new 1/2 inch capscrews 00803239, new hardened flat washers 01003045 on the inside of frame rail and inside of new high strength front frame battery bracket, and new 1/2 inch locknuts 00580800. Torque 1/2 inch to 54 to 58 Ft. Lbs.
11. Install new 3/8 inch locknuts 0054934 on the studs that attach the tray to the new bracket. Torque 3/8 to 29 to 33 Ft. Lbs.
12. Install the rubber pins 01160399 that attach the top front bracket.
13. If the bus has an optional closeout, install the fasteners for the closeout that attach to the front bracket.

R I T Y

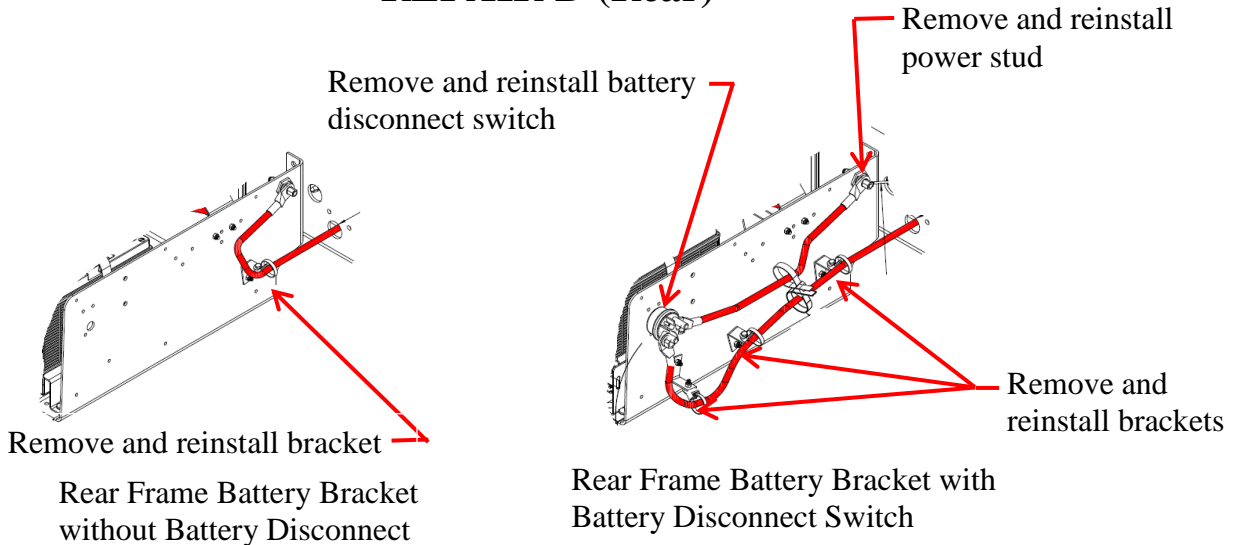
RECALL CAMPAIGN



VISION CHASSIS MOUNTED BATTERY BOX SUPPORT

RECALL

REPAIR D (Rear)



14. On rear frame battery bracket, remove the all the brackets that supports the battery cables. Remove all additional electrical components such as battery disconnect switch and power stud.
15. Remove and discard the rear three 1/2 inch capscrews, flat washers, and locknuts that attach the rear frame battery bracket to the frame rail. See Illustration on Page 15.
16. Remove and discard the two nuts that attach the rear frame battery bracket to the battery tray.
17. Remove the rubber pins that attach the top to the rear frame battery bracket.
18. Remove the rear brace and discard. **DO NOT REINSTALL** rear brace.
19. If the bus has an optional closeout, remove fasteners for the closeout that attach to the front bracket.
20. Remove the existing rear frame battery bracket and replace with new rear high strength frame battery bracket 10049664. NOTE: New rear high strength frame battery bracket 10049664 has a notch on the outer edge to identify the new high strength bracket and the old bracket does not. Align holes and install new 1/2 inch capscrews 00803239, new hardened flat washers 01003045 on the inside of frame rail and inside of rear high strength frame battery bracket, and new 1/2 inch locknuts 00850800. Torque 1/2 inch to 54 to 58 Ft. Lbs.
21. Install new 3/8 inch locknuts 00543934 on the studs that attach the tray to the new bracket. Torque 3/8 to 29 to 33 Ft. Lbs.
22. Install the rubber pins 0116039 that attach the top front bracket.
23. If the bus has an optional closeout, install the fasteners for the closeout that attach to the front bracket.
24. Reinstall after new frame battery bracket has been installed. Recoat any battery cable that has been removed with protective electrical coating. Remove battery tray supports, reconnect batteries and place bus back in service.

R I 7 Y

R E C A L L C A M P A I G N

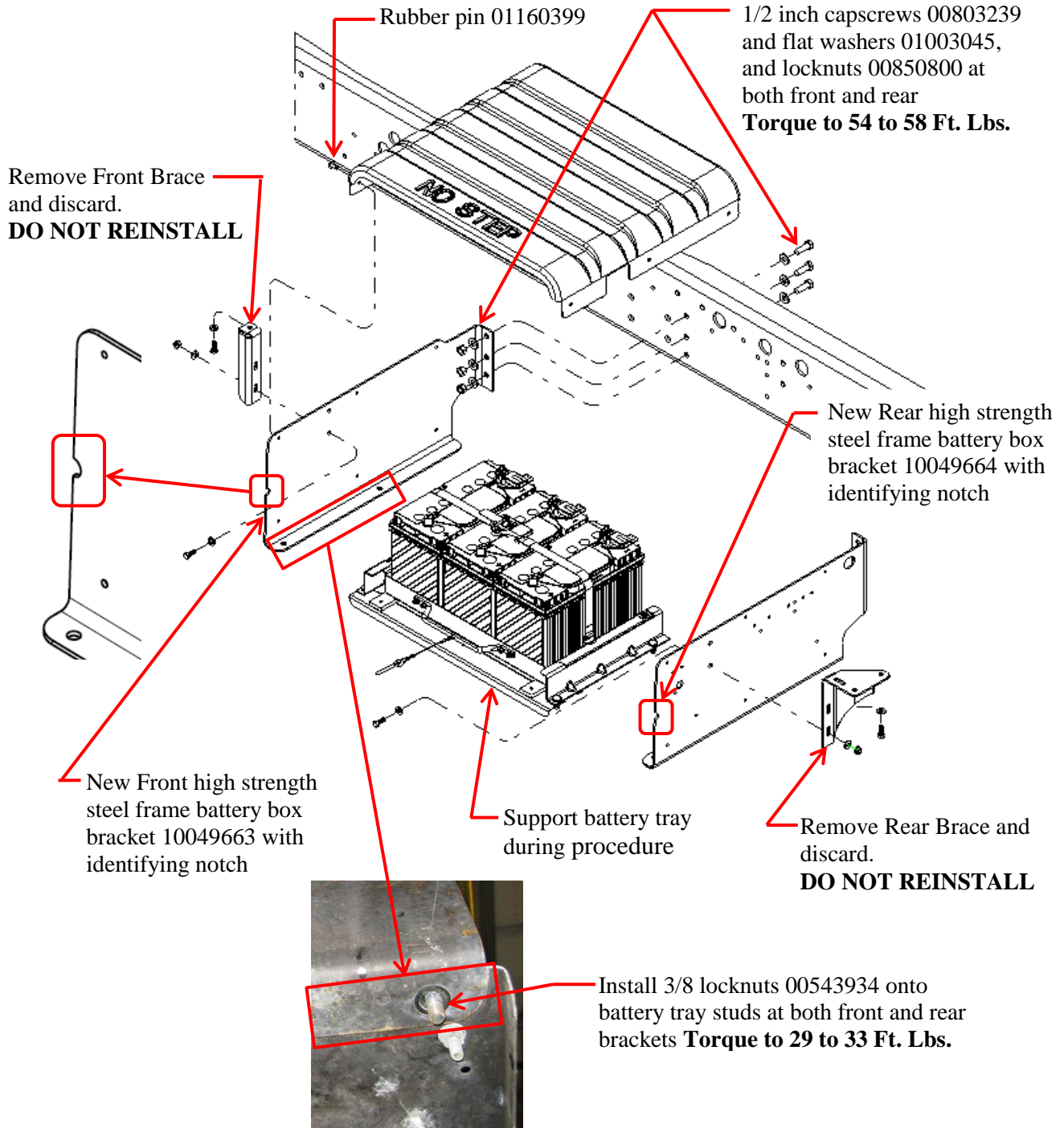


VISION CHASSIS MOUNTED BATTERY BOX SUPPORT

RECALL

REPAIR D

INSTALL FRONT AND REAR BATTERY BOX FRAME MOUNTING BRACKETS



RECALL CAMPAIGN R17Y



**VISION CHASSIS MOUNTED
BATTERY BOX SUPPORT**

RECALL

**PARTS LIST 1: REINFORCEMENT KIT
REPAIR B**

ITEM NUMBER	PART NUMBER	DESCRIPTION	QTY.
1	10054518	BRACKET, MTG, BATT BOX, FRAME,HD, RH	1
2	10054519	BRACKET, MTG, BATT BOX, FRAME,HD, LH	1
3	00803239	CAPSCREW, HEX HD, 1/2-13 X 1.50,GR8,YEL ZN	6
4	01003045	WASHER,FLAT,17/32 X 1 1/16 X 7/64 HDN, BLKZN	12
5	00850800	NUT, HEX, 1/2 -13 , LOCK,CADWAX	6
6	00559195	CAPSCREW, HEX HD ,3/8-16 x 1, GR 8, YEL ZN DICH	11
7	01107085	WASHER, FLAT, 13/32 x 13/16 x 3/32, HDN BLK ZN	11
8	00543934	NUT,HEX HD, 3/8-16, ZINC, LG FLG LK, YEL ZNDICH	11
9	00870477	CAPSCREW, HEX HD ,1/4-20 x 1, GR 8, YEL ZN DICH	3
10	01991108	WASHER, FLAT, 17/64 x 1, GR 8, YEL ZN DICH	6
11	02001345	NUT,HEX HD, .25-20, LOCKING,YEL ZN DICH	3

**PARTS LIST 2: REINFORCEMENT KIT AND FRONT BRACKET
REPAIR C**

ITEM NUMBER	PART NUMBER	DESCRIPTION	QTY.
1	10054518	BRACKET, MTG, BATT BOX, FRAME,HD, RH	1
2	10054519	BRACKET, MTG, BATT BOX, FRAME,HD, LH	1
3	00803239	CAPSCREW, HEX HD, 1/2-13 X 1.50,GR8,YEL ZN	6
4	01003045	WASHER,FLAT,17/32 X 1 1/16 X 7/64 HDN, BLKZN	12
5	00850800	NUT, HEX, 1/2 -13 , LOCK,CADWAX	6
6	00559195	CAPSCREW, HEX HD ,3/8-16 x 1, GR 8, YEL ZN DICH	11
7	01107085	WASHER, FLAT, 13/32 x 13/16 x 3/32, HDN BLK ZN	11
8	00543934	NUT,HEX HD, 3/8-16, ZINC, LG FLG LK, YEL ZNDICH	13
9	10049663	BRACKET, MTG,BATT BOX,FRAME,HD,FRONT	1
10	01160399	PIN, RATCHET,TYPE ONE, RUBBER PAD, PC 47486	4
11	00870477	CAPSCREW, HEX HD ,1/4-20 x 1, GR 8, YEL ZN DICH	3
12	01991108	WASHER, FLAT, 17/64 x 1, GR 8, YEL ZN DICH	6
13	02001345	NUT,HEX HD, .25-20, LOCKING,YEL ZN DICH	3

R I 7 Y
- R E C A L L C A M P A I G N -



**VISION CHASSIS MOUNTED
BATTERY BOX SUPPORT**

RECALL

**PARTS LIST 3: REPLACE FRONT AND REAR BRACKETS
REPAIR D**

ITEM NUMBER	PART NUMBER	DESCRIPTION	QTY.
1	10049663	BRACKET, MTG,BATT BOX,FRAME,HD,FRONT	1
2	10049664	BRACKET, MTG,BATT BOX,FRAME,HD,REAR	1
3	00803239	CAPSCREW, HEX HD, 1/2-13 X 1.50,GR8,YEL ZN	6
4	01003045	WASHER,FLAT,17/32 X 1 1/16 X 7/64 HDN, BLKZN	12
5	00850800	NUT, HEX, 1/2 -13 , LOCK,CADWAX	6
6	01160399	PIN, RATCHET,TYPE ONE, RUBBER PAD, PC 47486	7
7	00543934	NUT,HEX HD, 3/8-16, FLG, LOCK, YELZN	4

R I 7 Y
--R E C A L L C A M P A I G N --