

2004-2006 B-SERIES - DRIVER AIR BAG SAFETY RECALL 1917L

January 22, 2026. Created stand alone procedure for the passenger air bag inflator.

There is a Do Not Drive designation for this campaign as of August 2024. Warranty information guidelines for rentals and towing were also updated.



ATTENTION ALL MAZDA DEALERS:

THIS CAMPAIGN HAS BEEN DESIGNATED AS A DO NOT DRIVE RECALL. IF THE CUSTOMER REQUESTS TO TOW THE VEHICLE TO THE DEALER, PLEASE HONOR THE REQUEST AND REVIEW GUIDELIENS FOR CLAIMING TOWING BELOW. THE VEHICLE CAN ALSO BE TOWED BACK TO THE CUSTOMER HOME/WORK, ETC.. UPON REQUEST. ALL TOWS ABOVE \$1,000 WILL REQUIRE WARRANTY PREAUTH GOODWILL PRIOR TO TOWING.

MOBILE REPAIR BY MAZDA DEALER: THIS OPTION IS ENCOURAGED AND CLAIM INFORMATION IS CONTAINED IN EACH TAKATA RECALL. IF ADDITONAL COSTS ARE NEEDED TO COMPLETE A MOBILE REPAIR PLEASE FILL OUT DEALER RECALL HELP ON ONEMAZDA.

PLEASE DO NOT DENY A CUSTOMER REQUEST TO TOW WITHOUT SPEAKING WITH YOUR DISTRICT SERVICE MANAGER OR FILL OUT DEALER RECALL HELP ON ONEMAZDA.

LOANER VEHICLE: MCVP / RENTALS: A CUSTOMER CAN RECEIVE A MCVP OR RENTAL DURING THE REPAIR PERIOD, BUT MUST PICK UP THE VEHICLE WITHIN 48 HOURS OF THE REPAIR. ALL RENTALS GREATER THAN THE 2 DAY RENTAL POLICY MUST BE PRE-APPROVED UNLESS THE DEALER IS THE DSA TIER DOES NOT REQUIRE AUTHORIZATION.

UNREPAIRABLE VEHICLES: FILL OUT DEALER RECALL HELP ON ONEMAZDA WITH CLEAR PHOTOS AND DETAILED EXPLANATION ON WHY YOU CANNOT REPAIR. DO NOT LET THE CUSTOMER LEAVE UNTIL YOU HEAR BACK FROM THE RECALL HELP TEAM.

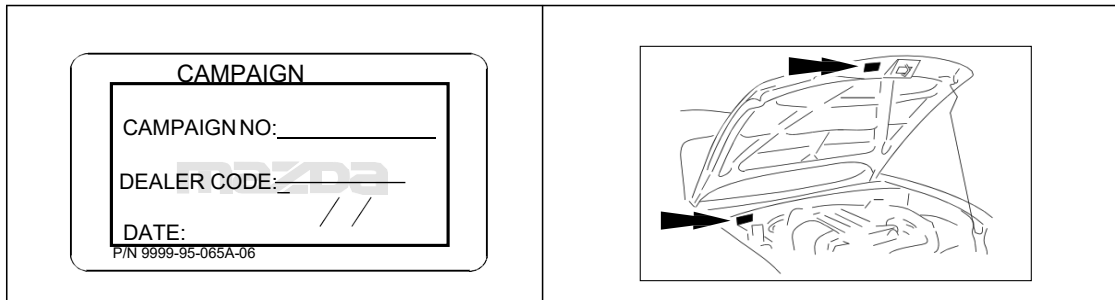
A. VEHICLE INSPECTION PROCEDURE

1. Verify that the vehicle is within the following ranges:

Model	VIN Range
2004-2006 B-Series	All

- If the vehicle is within the above ranges, proceed to Step 2.
 - If the vehicle is not within the above ranges, return vehicle to the customer or inventory.
2. Perform a Warranty Vehicle Inquiry using your eMDCS System and inspect vehicle for Campaign Labels **Recall 1917L** attached to the vehicle's hood or bulkhead. Refer to eMDCS System - Warranty Vehicle Inquiry Results table below.

NOTE: Be sure to verify Recall number as the vehicle may have multiple Recall labels.



eMDCS System - Warranty Vehicle Inquiry Results:

If eMDCS displays:	Campaign Label is:	Action to perform:
RECALL 1917L OPEN	Present	Contact Dealer Recall Help or the Warranty Hotline at (877) 727-6626 option 3 to update vehicle history.
	Not present	Proceed to "B. REPAIR PROCEDURE".
RECALL 1917L CLOSED	Present	Return vehicle to inventory or customer.
	Not present	Proceed to "C. CAMPAIGN LABEL INSTALLATION".
RECALLS 1917L is not displayed	Does not apply	Recall does not apply to this vehicle. Return vehicle to inventory or customer.

IMPORTANT: Be sure to follow the packing and shipping instructions provided in the carton and in Air Bag Inflator Return Instructions.

CAUTION

- Use the same carton which was used to deliver a new inflator. It is a specialized box that is internationally accepted for shipping an inflator.
- Pack the old inflator in the box exactly in the same manner as the new inflator was packed.

B. REPAIR PROCEDURE - Overview:

Remove the driver air bag from the vehicle and replace only the inflator portion. Please follow steps to return the used inflator to your parts department for storage and disposal.



It is critical that all air bag inflators are installed into the air bag module correctly. Do not use older versions of instructions to repair any Mazda vehicle. Please review each of the below steps carefully when installing the driver air bag inflator.

Air Bag Connectors and Battery Disconnect: Do not work on the vehicle without disconnecting the vehicle battery as this could result in damage to the vehicle or safety systems.

NOTE: Before starting the procedure, check that the Air bag Readiness light indicates no Supplemental Restraint System (SRS) faults are present, then proceed to the replacements of the inflator(s). Document any codes if present.

DRIVER AIR BAG INFLATOR REPLACEMENT

Air Bag Module Removal:

WARNING:

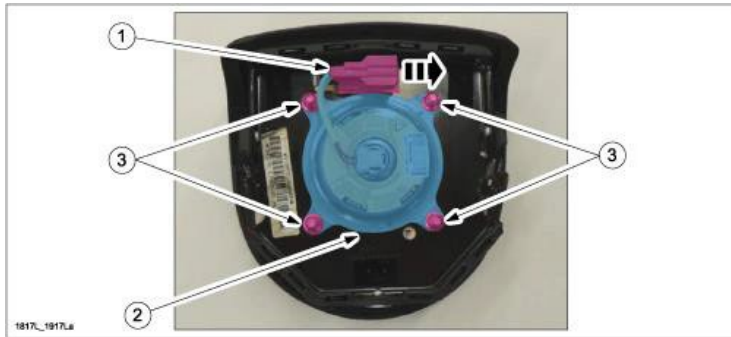
- Perform the replacement in a clean environment. Oil, grease, water, etc. on components may cause the air bag modules to fail to deploy in an accident, which may cause serious injury. Do not allow oil, grease, water, etc., on components.
- Inserting a screwdriver, etc., into the connector of an air bag module may damage the connector and cause the air bag module to deploy improperly, which may cause serious injury. Do not insert any foreign objects into the connector.
- Do not make an attempt to directly supply electrical power to the module and the inflator.
- Keep the module facing of the pad surface upwards at all times, except during replacement.
- Do not use the module and new inflator if they were dropped on the ground.
- Avoid module and inflator exposure to temperatures of 194 degrees F (90 degrees C) or more (e.g., do not leave the inflator out in the sun, on or near a hot surface such as a bullet heater).

1. Turn the ignition switch to the LOCK position.
2. Record the customer's preset radio stations.
3. Disconnect the negative battery cable and wait for one (1) minute or more.
4. Remove the driver air bag module. Refer to MGSS online ([DRIVER AIR BAG MODULE REMOVAL / INSTALLATION](#)).
5. Lay a protective cloth on the work bench, then place the air bag module on it to avoid any damage or scratches to the surface.

WARNING: Do not allow any debris on or around air bag once the inflator is removed.

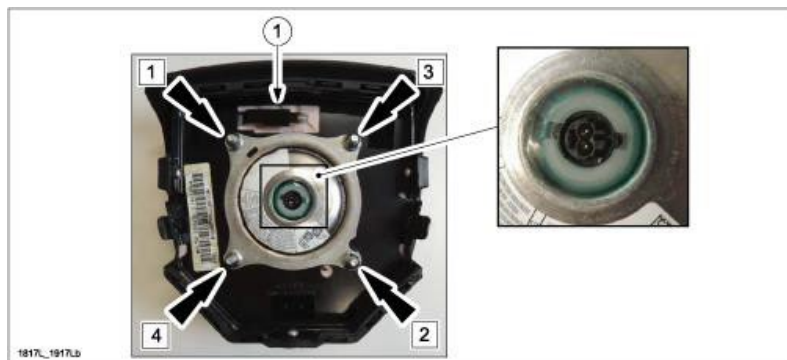
Driver Air Bag Inflator Replacement:

1. Release the retaining tab and slide the connector (1) of the air bag inflator (2) off the retainer.



2. Remove and discard the four air bag inflator retaining nuts(3) using hand tools only. **NO POWER TOOLS!**
3. Remove the air bag inflator and set aside for return shipping.
NOTE: In order to verify the correct air bag inflator is installed, mark the old air bag inflator with a felt tip marker prior to removal.
4. Install the new inflator into the driver air bag. The retainer (1) will be used for the electrical connector.

NOTE: The new air bag inflator must be installed in the same orientation as the original part to ensure the inflator module and air bag harness electrical connector T-shape indexes are aligned properly.



5. Install four new air bag inflator nuts onto the driver air bag using hand tools only. **NO POWER TOOLS! Tightening torque: 6.5 Nm (57 lb-in) in the specified sequence [1] [2] [3] [4]**
6. Align the T-shape index on both the wiring harness electrical connector and the air bag inflator by gently pulling on the wiring harness to ensure it is properly seated.

- Slide the connector (1) of air bag inflator (2) onto the retainer.

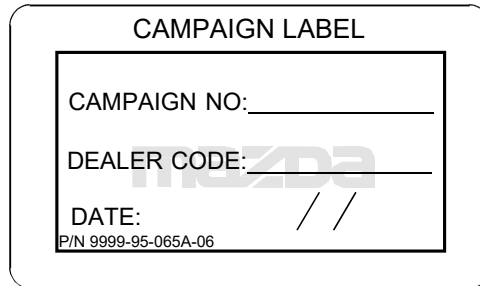


Air Bag Module Reinstallation:

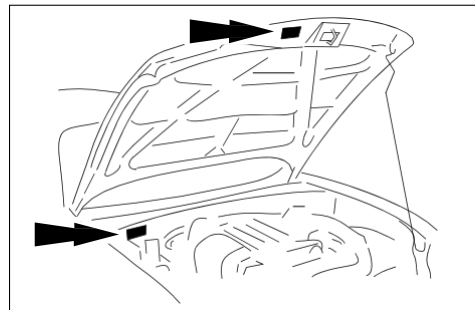
- Install the driver air bag module. Refer to MGSS online ([DRIVER AIR BAG MODULE REMOVAL / INSTALLATION](#)).
- Reconnect the negative battery cable.
- Turn the ignition switch to the ON position.
- Verify that the air bag system warning light illuminates for approx. 6 sec., then goes out.
- NOTE:** If the air bag system warning light does not operate in the manner described above, there is a malfunction in the system. Inspect the system following the on-board diagnostic system procedure according to MGSS online.
- Proceed to "C. CAMPAIGN LABEL INSTALLATION".

C. CAMPAIGN LABEL INSTALLATION

- Fill out a black "Campaign Label" (9999-95-065A-06) and Campaign "1917L", your dealer code, today's date.



- Affix it to the hood or bulkhead as shown:



(continued on the next page)

3. Return the vehicle to customer.



Check if the vehicle has an Open recall 1817L. If yes, proceed to the repair procedure for 1817L "PASSENGER SIDE AIR BAG REPLACEMENT" after installation of the Campaign label.

END OF REPAIR PROCEDURE