



SAFETY RECALL BULLETIN

SUBJECT:			No: SR-17-006
MIRAGE SRS WARNING LAMP ILLUMINATION – SAFETY RECALL CAMPAIGN			DATE: November, 2017
			MODEL: 2014–2018 Mirage
CIRCULATE TO:	<input checked="" type="checkbox"/> GENERAL MANAGER	<input checked="" type="checkbox"/> PARTS MANAGER	<input checked="" type="checkbox"/> TECHNICIAN
<input checked="" type="checkbox"/> SERVICE ADVISOR	<input checked="" type="checkbox"/> SERVICE MANAGER	<input checked="" type="checkbox"/> WARRANTY PROCESSOR	<input checked="" type="checkbox"/> SALES MANAGER

PURPOSE

This Safety Recall Bulletin provides instructions for reprogramming the SRS–ECU with a countermeasure software. The countermeasure software addresses DTCs B1557 and B1616 as a result of the SRS–ECU's misinterpretation of vibration caused by severe road conditions and/or driving on a flat tire.

BACKGROUND

The self–diagnostic function used by the internal acceleration sensor in the SRS–ECU may misinterpret vibration caused by severe road conditions and/or driving on a flat tire to be a malfunction in the SRS–ECU. If this occurs, the SRS warning lamp will illuminate and none of the seven airbags available in the vehicle will deploy in the event of a crash.

AFFECTED VEHICLES

2014–2018 Mirage vehicles

IMPORTANT

Affected new or used inventory vehicles must be repaired before the vehicle is sold/delivered. Dealers must check their inventory vehicles' VINs on the Warranty Superscreen to verify whether the vehicle is involved in this recall campaign. It is a violation of Federal law for a dealer to sell/deliver a new motor vehicle or any new or used item of motor vehicle equipment (including a tire) covered by the notification under a sale or lease until the defect or noncompliance is remedied.

REQUIRED OPERATIONS

!! IMPORTANT !! Some vehicles may have already had the recall completed at the Port. These vehicles have been marked with a black dot on the Left Front door latch. Ensure that the vehicle does NOT have a black dot on the Left Front door latch before proceeding.



1. Confirm your MUT–III is updated with the latest reprogramming database.
2. Reprogram the SRS–ECU with the new software. Refer to the **SRS–ECU Reprogramming Chart** for new software information.

IMPORTANT: If an affected vehicle has a Malfunction Indicator Lamp (MIL) illuminated before reprogramming, and DTCs other than B1557 and B1616 are listed in the SRS memory, diagnose and repair those DTCs per the service manual before reprogramming. **DO NOT** reprogram the SRS–ECU until the reason(s) for DTCs other than B1557 and B1616 being set is corrected.

EQUIPMENT

The following equipment is needed to reprogram the SRS–ECU.

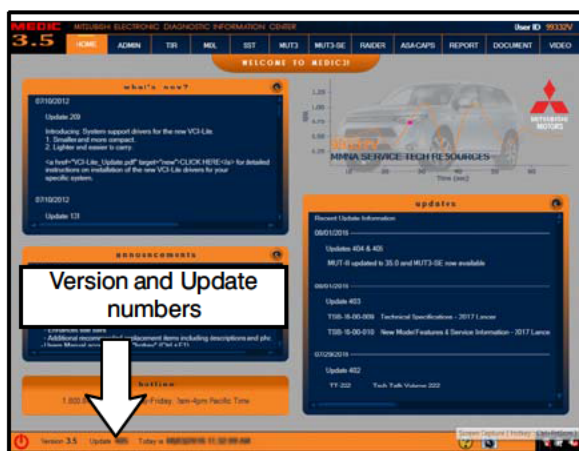
- VCI (Vehicle Communication Interface) or VCI Lite – MB991824 or MB992744V.
- MEDIC Laptop/Tablet with A/C power adapter – MIT540031, or FZG1MK2.
- MUT–III main harness 'A' (blue connector at the DLC end) – MB992745V.
- USB 2.0 cable – RRAR1MBR108GL.
- MEDIC 3.5/4 update at **500** or higher.
- For Standalone MUT–III SE units, MUT3–SE Reprogramming Database **N171001** or higher.

SRS–ECU REPROGRAMMING CHART

M.F.F	ECU Part Number	Software Part Number	
		NEW	OLD
8635A541	8635A410	8635A410 01	8635A410 00
8635A540	8635A374	8635A374 01	8635A374 00
8635A537	8635A235	8635A235 01	8635A235 00
8635A539	8635A394	8635A394 01	8635A394 00
8635A538	8635A353	8635A353 01	8635A353 00

REPAIR PROCEDURE

1. Verify that the SRS–ECU has not already been updated to the latest S/W number in the table above. If the SRS–ECU is at the latest level, reprogramming is not necessary.



For MEDIC 3.5/4 users only: (MUT–III STV users go to step 5)

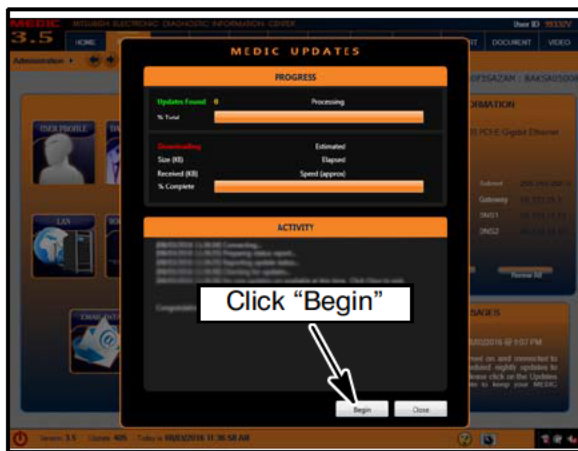
2. Verify the MEDIC 3.5/4 is at version 3.5 and at update **500** or higher.

If your **MEDIC 3.5/4 update is at least 500**, continue with the Reprogramming Procedure on page 4.

If your **MEDIC 3.5/4 update is below 500**, update your MEDIC as follows.



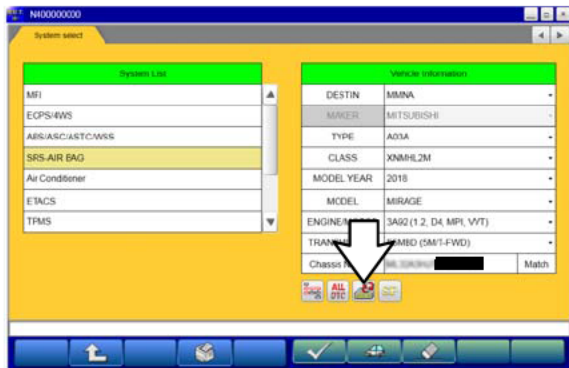
3. Select the MEDIC 3.5/4 Admin tab and click on "MEDIC UPDATES."



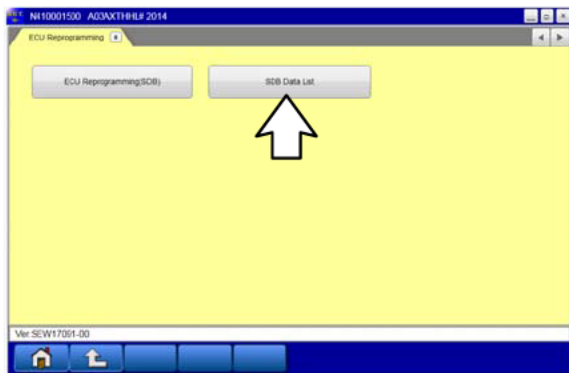
4. If the MEDIC update screen advises updates are available, click the "Begin" button. After all updates are complete, **GO TO THE REPROGRAMMING PROCEDURE.**



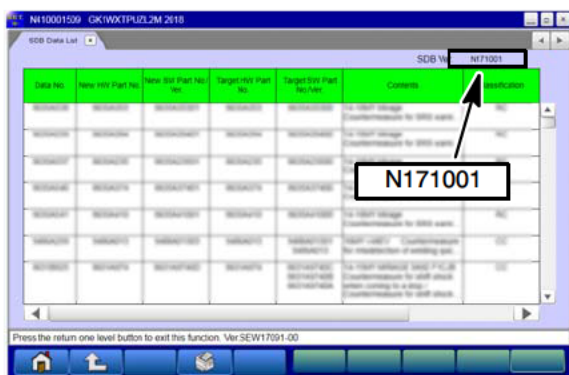
5. **STANDALONE MUT-III SCAN TOOL VIEWER (STV) ONLY: (MEDIC 3.5 USERS – GO TO THE REPROGRAMMING PROCEDURE).** Verify that your MUT3-SE has the most current version of the reprogramming database:
From the MUT3-SE Main Page:
a. Click "STV."



b. Click the “ECU Reprogramming” button.



c. Click “SDB Data List.”



- d. Confirm that the database number displayed in the upper right above the chart is **N171001 or higher**
- If the database number displayed on your MUT3–SE is N171001 or greater, continue to the **Reprogramming Procedure**.
 - If the reprogramming database number displayed on your MUT3–SE is **lower** than **N171001**, then the MUT3–SE database needs to be updated.

REPROGRAMMING PROCEDURE

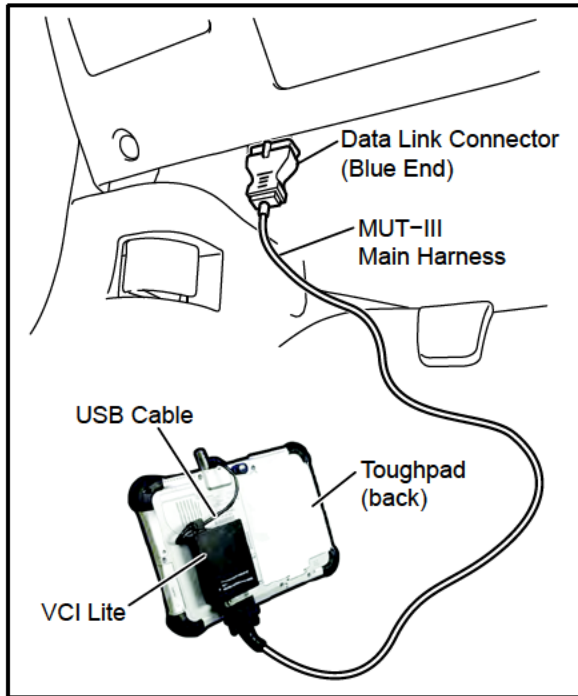
NOTE: VCI Stand-alone reprogramming is not available for this procedure.
The laptop/tablet and the VCI must remain connected for the entire procedure.

CAUTION

To ensure that the vehicle battery maintains 12V during the procedure, hook-up a battery charger to the vehicle during the procedure.

1. Connect the equipment as follows:

NOTE: VCI Lite and MEDIC 4.0 Toughpad shown for illustration purposes only.



- Turn the MEDIC PC/tablet on. If the battery indicator in the lower right hand corner of the screen does not show a full charge, it is recommended that either the battery be charged prior to beginning, or be used with the A/C power adaptor connected.
- Connect the USB cable to the VCI/VCI Lite.
- When the laptop/tablet displays the MEDIC main screen, connect the USB cable to the device.
- Connect the MUT-III main harness with the blue DLC connection to the VCI/VCI Lite.
- Connect the blue connection of the MUT-III main harness to the vehicle's data link connector.
- Turn the VCI power switch ON. Verify that the indicator lamp in the upper right corner of the screen is green.

CAUTION

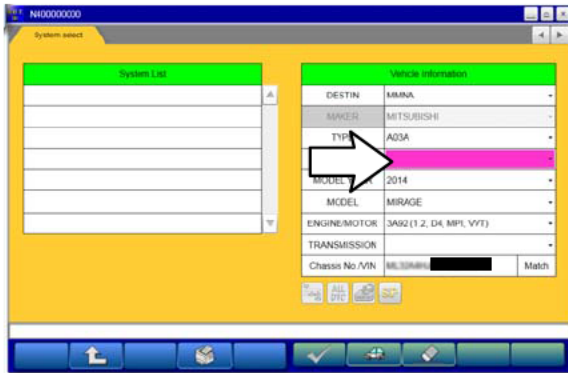
DO NOT DISTURB THE HARNESS CABLES OR CONNECTIONS DURING THE CODING PROCESS AS IT COULD CAUSE THE CONTROL UNIT TO LOSE DATA. IF THE USB CABLE IS DISCONNECTED DURING THIS PROCEDURE, A WARNING MESSAGE WILL DISPLAY.

2. Turn the ignition switch to the "ON" position.



3. Using MEDIC, from the main page, click the "MUT3-SE" icon at the top center of the screen to open MUT-III SE.

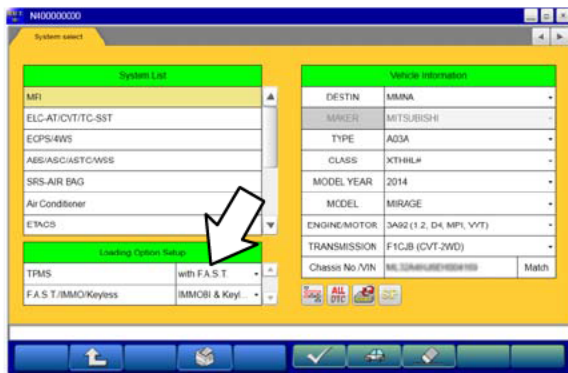
Click the "STV" button.



4. The System Select screen opens and populates with some basic information from the vehicle.

Look at the label on the passenger side B pillar to identify the appropriate class.

Then select the correct class from the drop-down list.



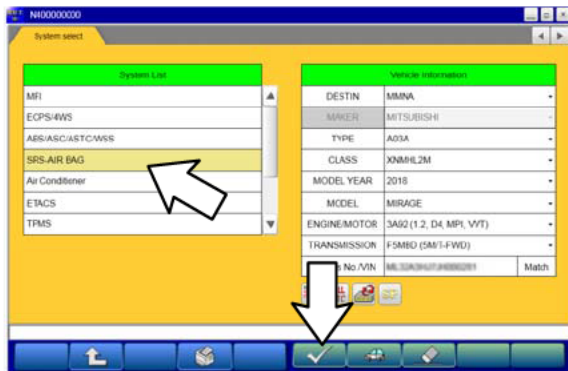
5. The System List should now populate with vehicle information.

If required, select the correct Loading Option Setup from the drop-down lists.

- TPMS: (e.g., with F.A.S.T. / w/o F.A.S.T.)
- F.A.S.T./OSS/IMMO/Keyless: (e.g., with F.A.S.T. / w/o F.A.S.T.)

6. Verify that the SRS-ECU has not already been updated to the latest S/W number in the table above.

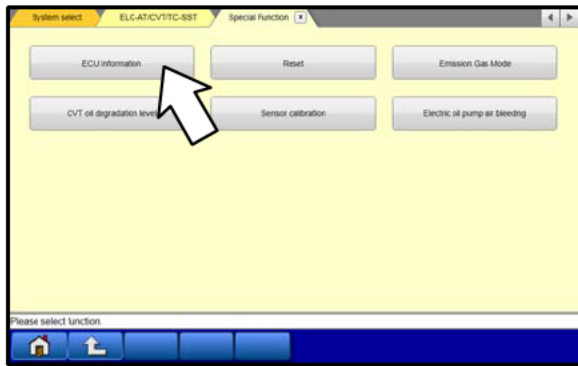
If the SRS-ECU is at the latest level, reprogramming is not necessary.



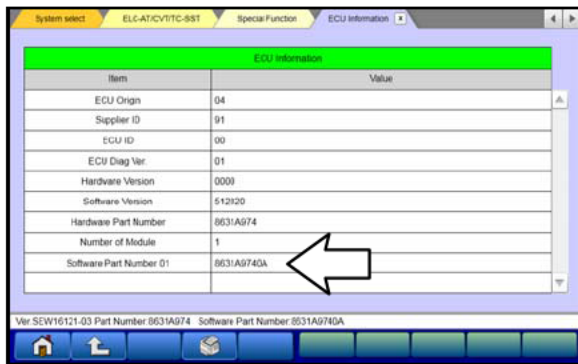
a. Select "SRS-AIR BAG" from the System List, then click on the check mark at the bottom of the screen.



b. Select "Special Function."



c. Select "ECU Information."



d. If the Software Part Number listed is **not** at the latest level (shown in the SRS–ECU Reprogramming chart), proceed with the next step.

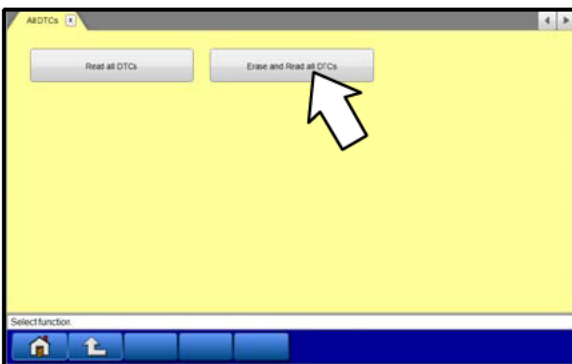
If the Software Part Number **is** at the latest level, then reprogramming is not necessary.

7. Before reprogramming, perform an “Erase and Read All DTCs” to clear any DTCs that may have set.

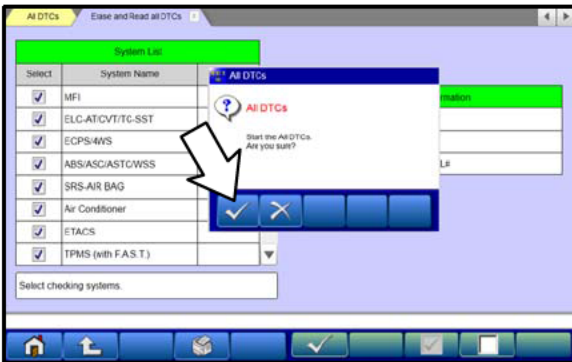


a. Click the home button to go back to the System Select screen.

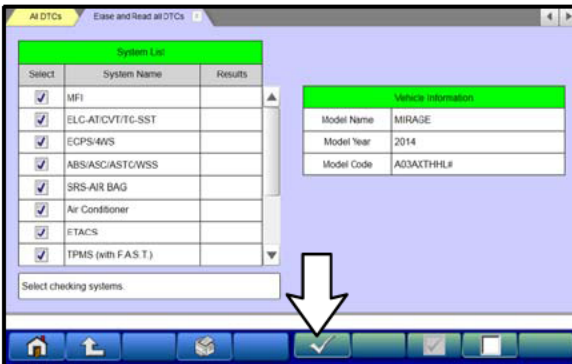
Click the “ALL DTC” button.



b. Select “Erase and Read All DTCs.”

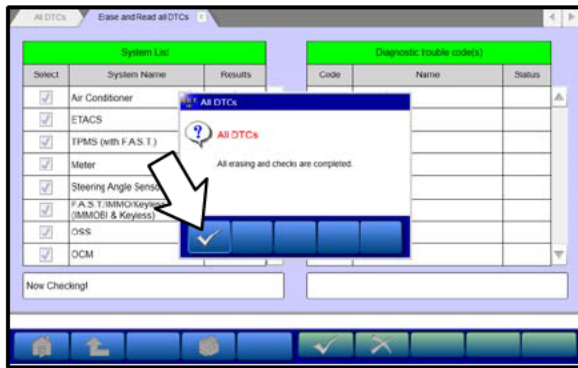


c. A window will pop up asking you to confirm DTC erasing. Click the check mark in the dialog box for DTC erasing and reading to begin.



d. The “System List” on the left side of the screen will have all selections checked. Do not change these selections.

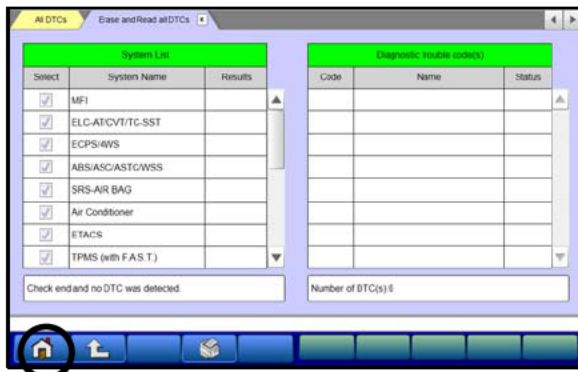
e. Click the check mark to continue.



8. When DTC erasing is completed, click the check mark in the pop-up message that reads “All erasing and checks are completed.”

a. If DTCs other than **B1557** and **B1616** return after erasing is completed, click the check mark to clear the window. Diagnose and repair per the Service Manual.

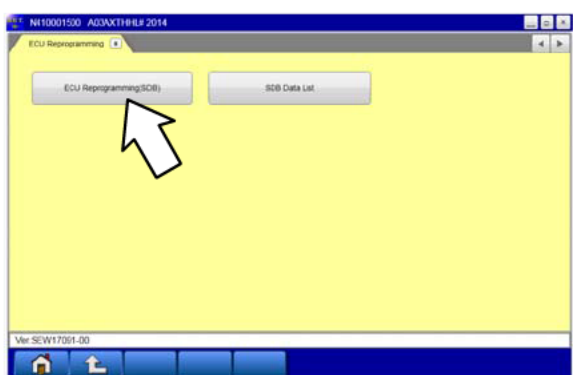
b. If DTCs do not return, or only **B1557** and **B1616** remain, click the check mark to clear the window, then click the Home icon in the lower left to return to the System Select menu.



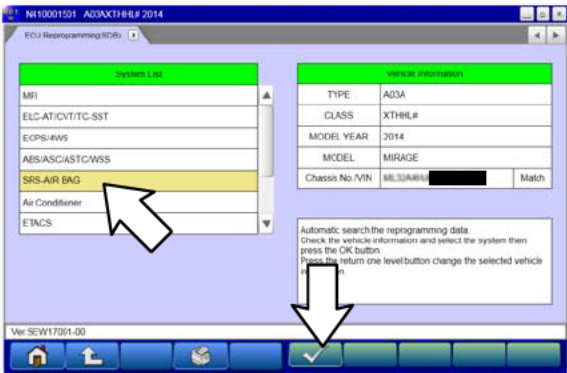
9. Reprogram the SRS-ECU following the steps below.



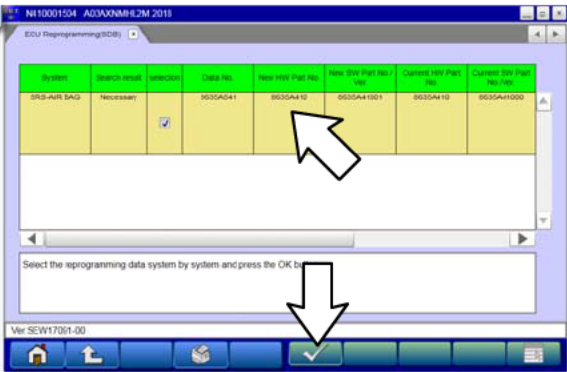
a. Click on the Reprogram button.



b. Select “ECU Reprogramming (SDB).”

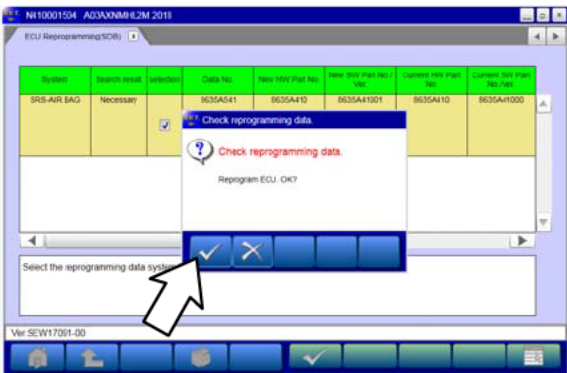


c. Verify the “SRS–AIR BAG” is selected in the System List, then click the check mark.



d. Select the correct M.F.F data file listed in the **SRS ECU Reprogramming Chart**.

e. Click the check mark at the bottom of the page to initiate reprogramming.

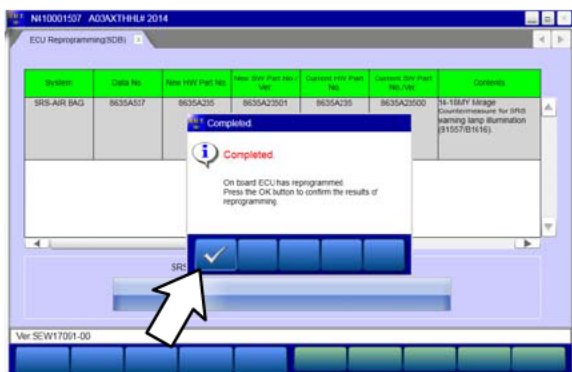


f. Click the check mark in the “Check reprogramming data” dialog box.

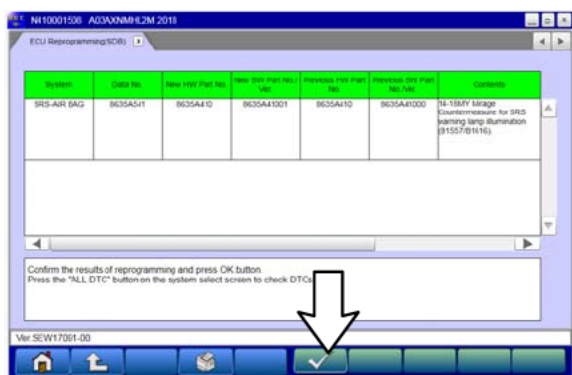


g. Once the reprogramming is initiated, the screen shown will indicate the reprogramming progress.

NOTE: Do NOT disturb the cables or turn off the ignition during reprogramming.



h. Click the check mark in the “Completed” dialog box.



i. Verify the correct information is listed in the table. Click the check mark at the bottom of the page, then click the Home button to return to the System Select screen.

10. Perform an “Erase and Read All DTCs” again to clear any DTCs that may have set.
For instructions, refer to steps 7 and 8 in this TSB.
11. Verify that the software Data No. is now at the latest number listed in the SRS ECU Reprogramming chart in this TSB.
For instructions, refer to step 6 in this TSB.
12. Turn off the ignition switch and disconnect the MUT—III. Turn off and disconnect the battery charger.
13. Test drive the vehicle to confirm proper operation.

PARTS INFORMATION

No parts are required for the completion of this recall.

WARRANTY INFORMATION

There is only 1 repair scenario.

Scenario	Involved Models	Campaign Op#	Labor Time	Repair Description
1	Certain 2014–2018 Mirage	C1706M01	0.4 hrs.	Reflash the SRS–ECU

WARRANTY / RECALL CAMPAIGN CLAIM INFORMATION

Enter all claims as claim type 'C' – Recall/Campaign Claims.

Please follow these campaign instructions. A claim example is provided below.

Certain 2014–2018 MY Mirage

Required Operation to be performed	Labor Operation	Labor Time
1. 2014–2018 Mirage – Reflash	C1706M01	0.4 hrs.

Claim Header Section:

MITSUBISHI DEALER LINK Service Warranty Warranty Claim Help

Claim Entry Vehicle Information Campaign Information

Enter in the first 6 characters of the campaign number: C1706M.

Campaign Operation No: Enter As TSP

Miles/Km:

VIN:

This campaign is for reprogramming the SRS-ECU. Check the Open Campaign area of the Superscreen each time to be certain of a vehicle's eligibility. Only VINs showing C1706M as open are involved.

Service Technician: Emp No: Service Advisor: Emp No:

Spec Value *: Duplicate Recall *:

Dealer: Ref No: VIN:

Claim No: Adj: Claim Status: Model and Year:

After entering the required customer data, vehicle information, selecting the applicable repair campaign and scenario performed (please note there is only 1 possible repair scenario for this campaign), and then hitting the "Save and Continue" button, the system will automatically fill-in several fields. See the labor and parts examples on the next page.

LABOR AND PARTS**Labor:**

There is only 1 possible repair scenario for this campaign. This campaign requires only reprogramming of the SRS-ECU.

Reprogram the SRS-ECU on involved vehicles:

- C1706M01 – 0.4 hrs.

Parts:

No parts are required or needed for this repair.