



RECALL INSPECTION BULLETIN GENESIS HYBRID FRAMELESS DUMP TRAILER

SUBJECT: Inspecting Draft Arms
Regarding Safety Recall 17V-684
DATE: February 2018 REV: C

INSPECTION PROCEDURE

REASON FOR THIS INSPECTION

East Manufacturing Corporation has decided that a defect which relates to motor vehicle safety exists in the Genesis Hybrid Frameless Dump Trailer.

Impacted Products:

Genesis Hybrid Frameless Dump Trailers greater than 36' in length, produced after January 17, 2013, with the draft arm assembly built with a draft arm support bracket and quiet ride pads. This issue potentially affects any trailer built prior to January 17, 2013 but updated later to the draft arm support bracket and quiet ride pads.



Trailers with the older style cone and receiver are exempt from this inspection and recall.



Problem Description:

Under a combination of events, it is possible for a crack to start forming at the landing gear brace bracket. If not corrected, the crack can spread until a failure of the draft arm assembly can occur.

View of area to look for a crack, both sides of trailer



View of crack forming on underside of draft arm tubing



View of crack from inside face of the draft arm tubing



WHAT WE WILL DO

East Manufacturing Corporation will voluntarily remedy this defect at no charge to the trailer owner via a modification to the draft arm assembly. If a crack has already formed, the draft arm assembly will need to be replaced at a *repair facility previously trained by East Mfg. on hybrid repairs*.

WHAT YOU SHOULD DO

If you are contacted from a current owner of a Genesis Hybrid Frameless Dump Trailer, please schedule an inspection appointment and file a claim online for each trailer inspected. Be sure to include pictures on each claim as required.

East Mfg. will pay 1 hour of labor per trailer inspected.

If cracks are found to have started, the owner of the trailer will need to go to an East Mfg. Dealer, *previously factory-trained on hybrid repairs*, to have a new draft arm assembly installed.

If no cracks are found, we will pay 16 hours labor, plus provide parts (PN RM-12003-100), per trailer to be updated according to the instructions below:

A.) Remove landing gear bracket, install new landing gear bracket in new location.

1. Unbolt landing gear arm brace from landing gear bracket. See Illustration 1
2. Cut existing landing gear bracket off, no closer than 3/8", from the bottom of draft arm tube and discard. ***Do not cut, sand or grind the existing welds on the bottom of the draft arm tube.***

3. Bolt the new landing gear bracket (PN 020-10410-00) to the landing gear arm brace, then rotate upwards until the bracket overlaps the inside face of the draft arm tube by 2". Bracket may need to be trimmed down to avoid interfering with the crossmember currently in place.
4. ***Weld only the top of the bracket to the tube starting and stopping 1/2" from the vertical edges.*** See weld pattern in Illustration 2

Illustration 1

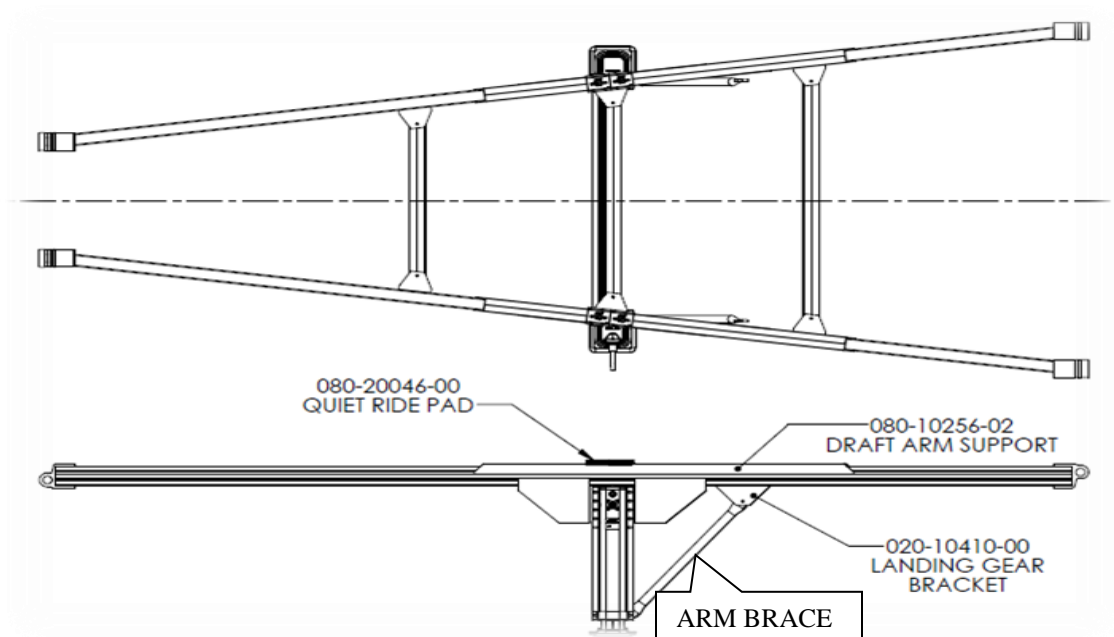
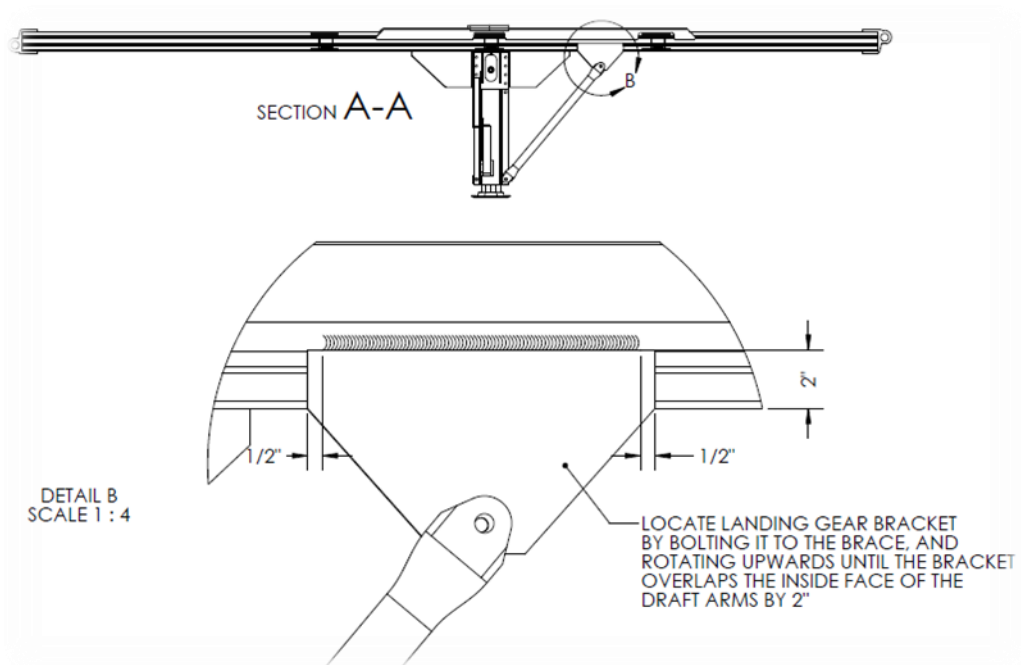
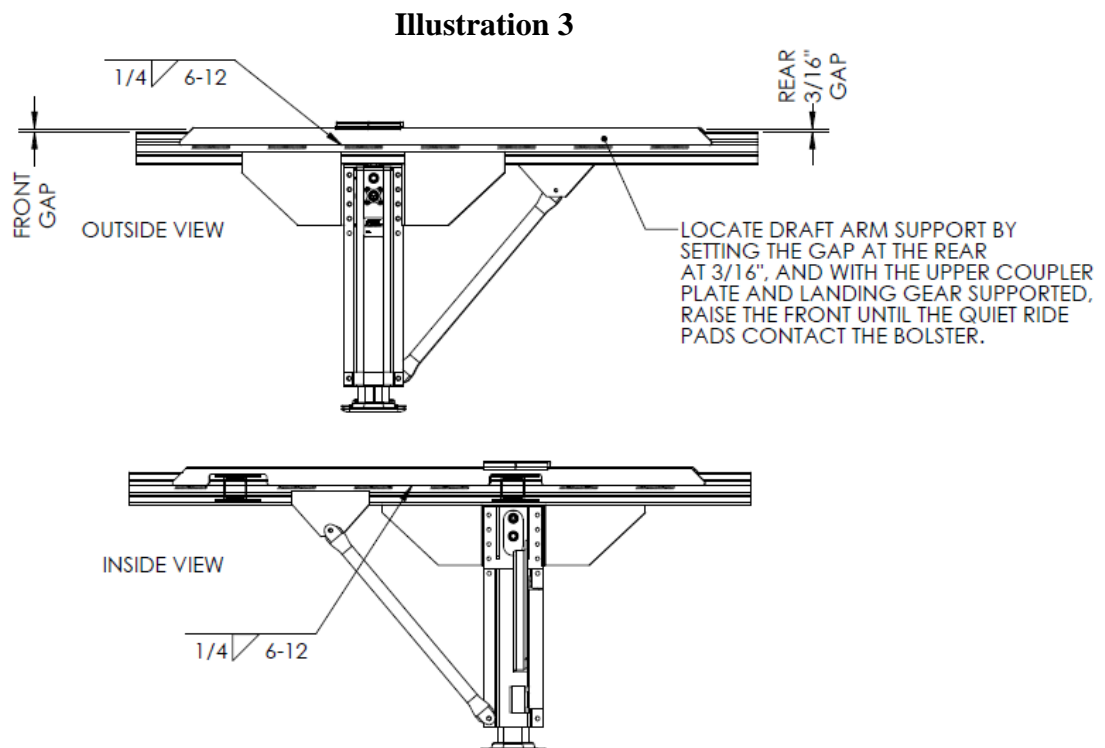


Illustration 2



B.) Remove draft arm support and replace with longer support

5. Cut the existing welds on the draft arm support, remove and discard the support. See Illustration 1
6. Sand and clean the sides of the draft arm tube to prepare for welding.
7. Position new draft arm support (PN 080-10256-01 and 080-10256-02) on top of draft arm tube with the notches facing the center of the trailer and the notches straddling the center and rear crossmembers. See Illustration 1
8. Position 2 quiet ride pads (PN 080-20046-00) on top of each draft arm support, centered underneath the bolster. Weld in place. See Illustration 1
9. Shim the rear of the draft arm support by $\frac{3}{16}$ ". With the upper coupler plate fully supported against the saddles and the landing gear supported, raise the front of the draft arm support until the quiet ride pads contact the bolster.
10. Weld the new draft arm support to the draft arm tube. Starting from the center of the draft arm support, weld $6'' \times \frac{1}{4}''$ beads, spaced $12''$ on center. See weld pattern in Illustration 3
11. Remove $\frac{3}{16}''$ shim.



C.) Add new crossmember assembly at rear of saddle assembly

12. Locate rear saddle crossmember on body. See Illustration 4
13. Center crossmember assembly (PN 016-20036-01) under rear saddle crossmember. Weld the hold down pin plate (PN 016-10171-01) in place. See Illustration 4 for weld pattern
14. **VERY GENTLY** lower the body until the crossmember assembly is slightly touching the draft arms. Use extra care to not push the crossmember down into the draft arms. See Illustration 5
15. Mark and trim hold down crossmember assembly to fit inside the draft arm width. See Illustration 5
16. Using the included shims (PN 016-10179-00), space the upper coupler plate ¼” from the saddles. Make sure the upper coupler plate is supported and tight against the shims and saddles. See Illustration 6
17. Weld the hold down crossmember assembly to the draft arms on the vertical faces, place and weld the gussets (PN 016-10174-00) on the top and bottom. **Stop welds ½” from end of gussets.** See weld pattern on Illustration 7
18. Bolt through the gussets (PN 016-10174-00) and hold down crossmember assembly (PN 016-20036-00). See Illustration 8

Illustration 4 - 8 on next pages

Parts for this update will be available after March 7th, 2018.

Please file a claim online as soon as inspections are done, so parts may be shipped as they become available. Claims must include pictures of area of concern, both sides of trailer.

Illustration 4

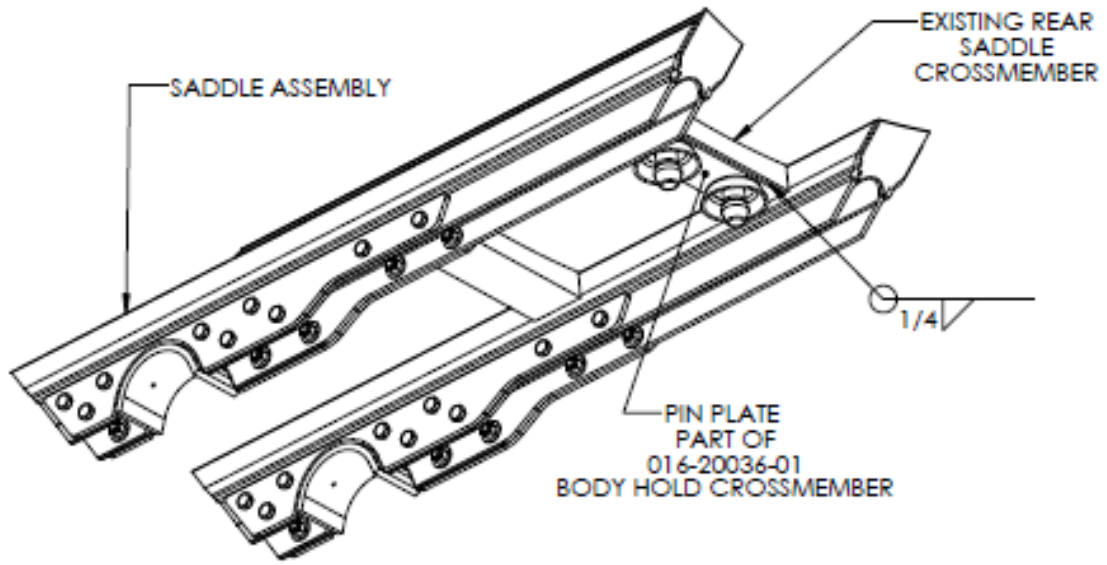


Illustration 5

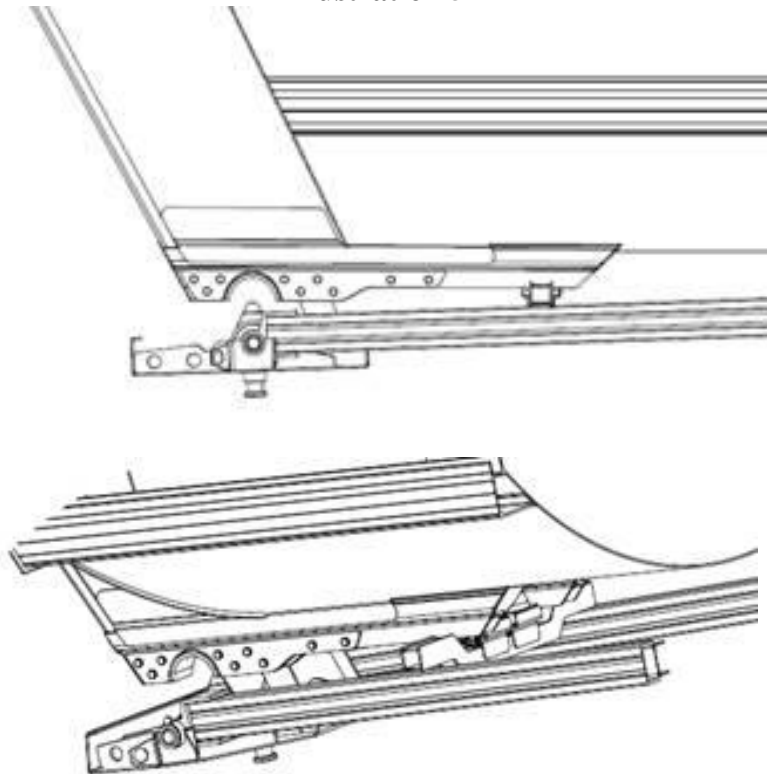


Illustration 6

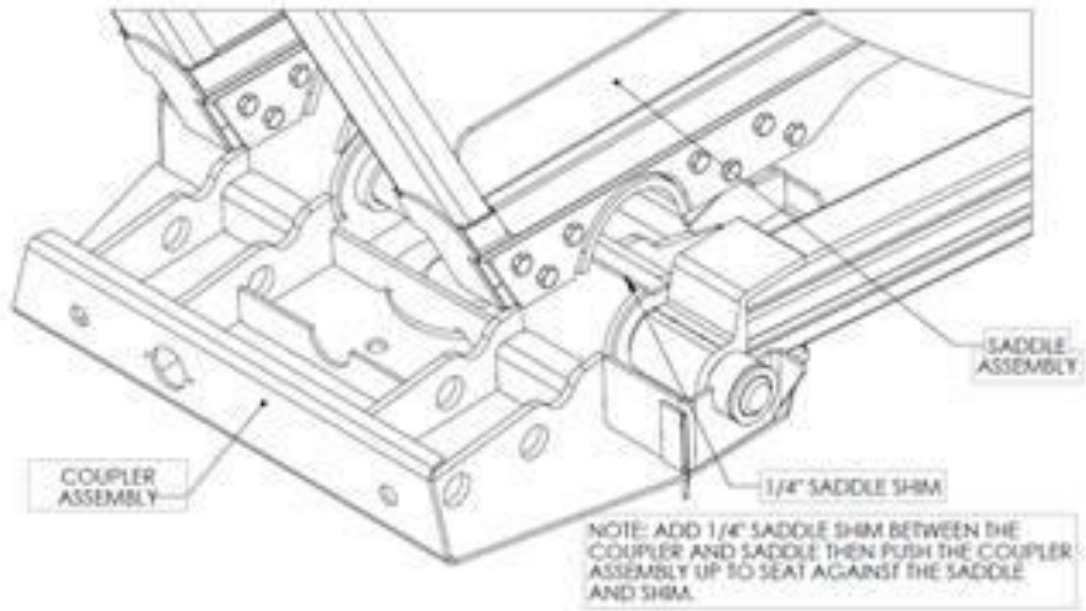


Illustration 7

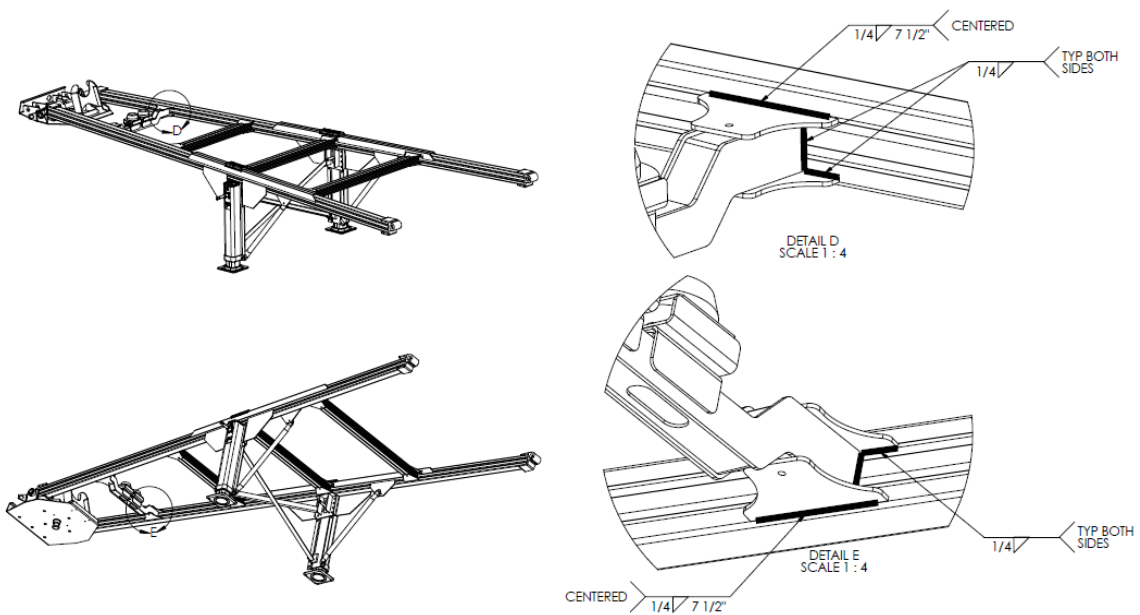
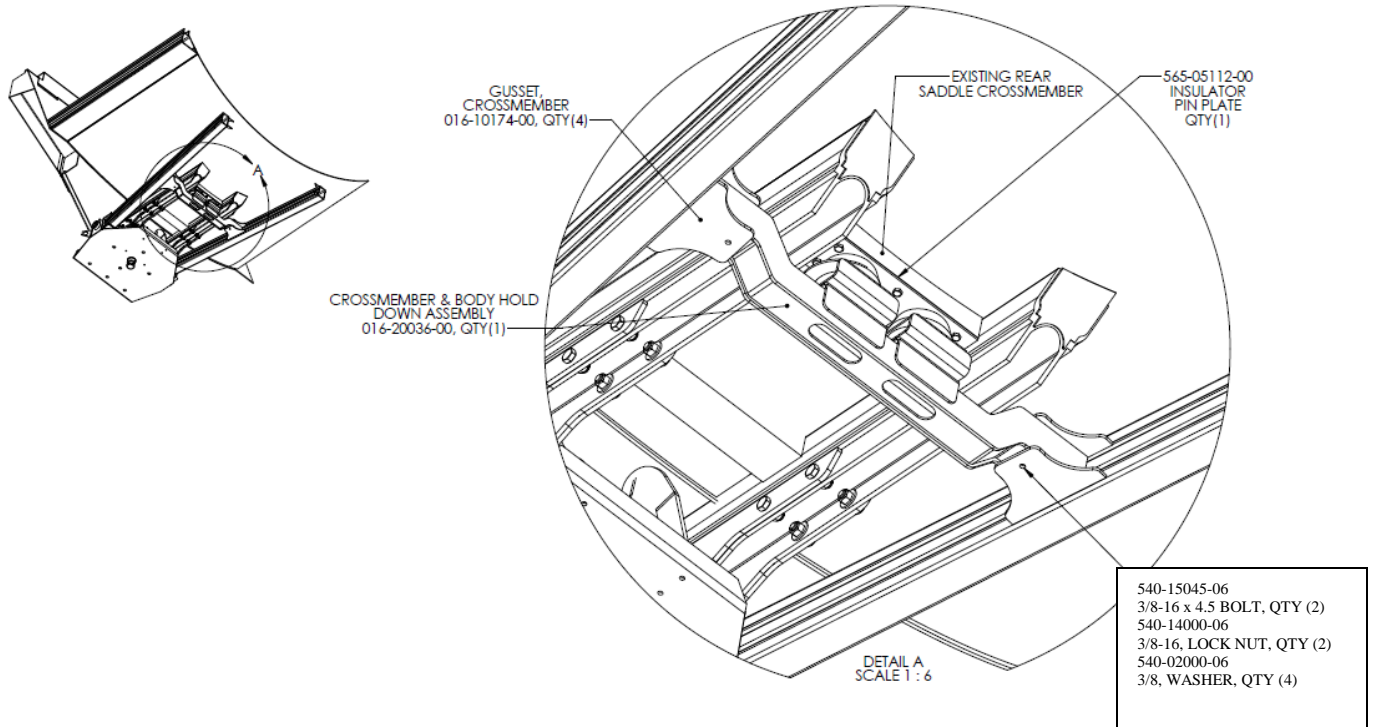


Illustration 8



HOW TO CONTACT US

Please call our Warranty Department with any questions you may have about this voluntary safety recall campaign. The telephone number 330-325-9921 is available Monday-Friday, 8:00am – 5:00 pm ET for your convenience or e-mail recall@eastmfg.com.

Please remember it is a violation of federal law to sell or resell any trailer covered by a safety recall that has not been inspected and updated.

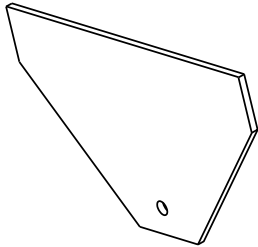
Sincerely,

East Manufacturing Corporation

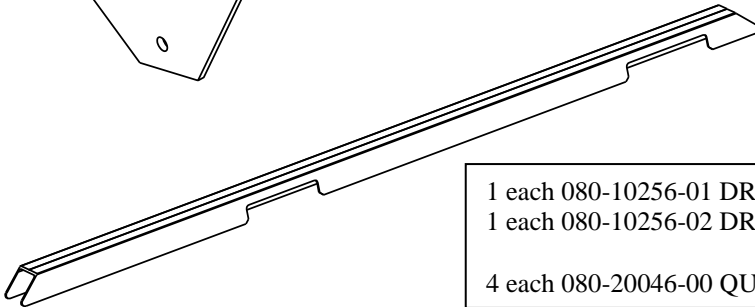


**Make sure you are using RECALL INSPECTION BULLETIN
REVISION C instructions before proceeding.**

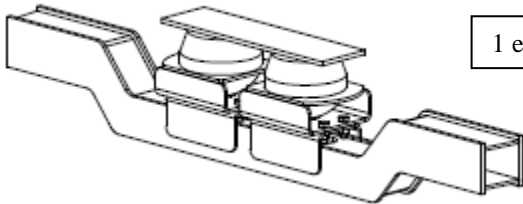
Parts per trailer included per kit part number RM-12003-100:



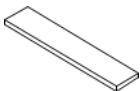
2 each 020-10410-00 LANDING GEAR BRACKET



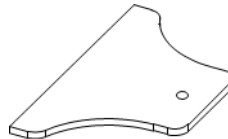
1 each 080-10256-01 DRAFT ARM SUPPORT D/S
1 each 080-10256-02 DRAFT ARM SUPPORT P/S
4 each 080-20046-00 QUIET RIDE PADS (shipped loose)



1 each 016-20036-01 HOLD DOWN CROSSMEMBER ASSEMBLY



2 each 016-10179-00 SHIM



4 each 016-10174-00
CROSSMEMBER GUSSET

2 each 540-15045-06 BOLT
2 each 540-14000-06 LOCK NUT
4 each 540-02000-06 WASHER