



RECALL CAMPAIGN

NHTSA# 17V-590

Date of Publication: October 2017

TC# 2017-482

Job Code 9903361

Series/Flat Rate RC005 Inspect Only .15 hr

RC013 Inspect and add P-Clamp/s for sufficient clearance .3 hr

RC024 Inspect and add P-Clamps and Replace LP hose 1 hr

ACTION REQUIRED

Inspect LP gas hose that crosses the chassis main rail for:
Sufficient clearance from the exhaust and the drive shaft
Damage (scuffed, melted, worn etc.) from exhaust and/or drive shaft
Replace LP hose when damage is noted. Do not return damaged hose to Jayco.

AFFECTED UNITS

2016-2017 Greyhawk 29ME Class C motorhomes
2016 G1ME0051-0236
2017 H1ME0051-0260

PARTS KITS 17V-590A 17V-590B

Note: Kits can only be ordered using the order form included with this bulletin.

KIT 17V-590A 3 Clamps, vnl coat stl .88
3 Screws, hex wshr .25 x 1" tek3 zc

KIT 17V-590B 1 207" LP hose w fittings *order ONLY after inspection notes damage.*
ALL orders submitted no later than 1pm will ship same day and overnight at no charge.

Misc. Tools and Supplies

Screw gun with 3/8" socket driver bit
9/16" open end wrench
3/4" open end wrench
Side cutters
Flashlight

⚠ WARNING

TURN OFF THE LP TO THE RV PRIOR TO INSPECTION

INSPECTION of the LP hose that crosses the chassis main frame

INSPECT THE LP GAS HOSE FOR THE FOLLOWING (Fig 1-2):

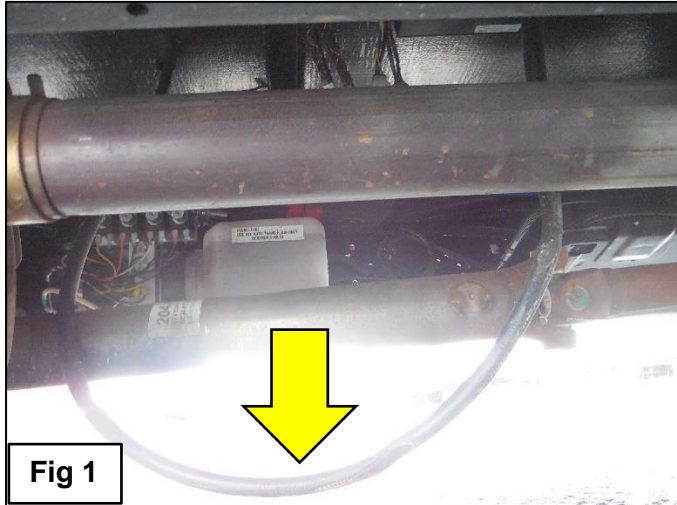


FIG 1: LP hose hanging down - insufficient clearance from the driveshaft, and/or the exhaust.

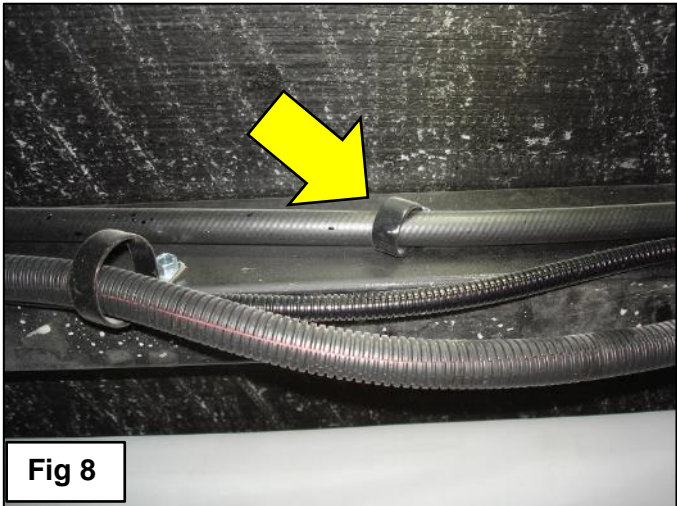
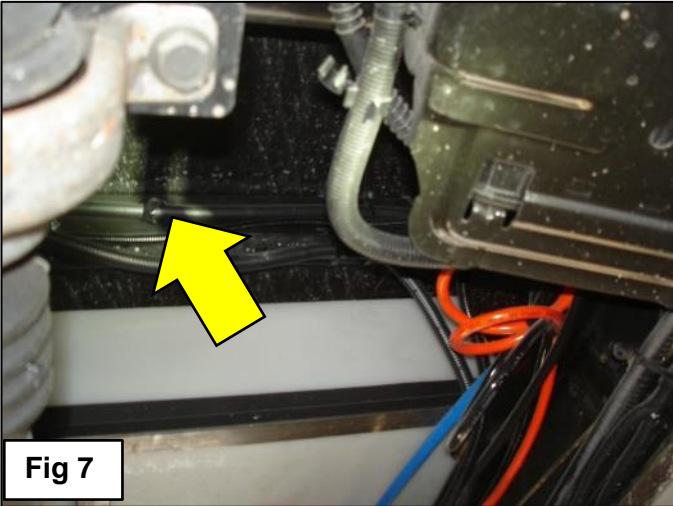


FIG 2: Damage to the LP hose:
Left Arrow: rubbing from the driveshaft,
Right Arrow: burnt/melted from the exhaust.

⚠ WARNING

TURN OFF THE LP TO THE RV PRIOR TO REPAIRS

REPAIR INSTRUCTIONS



A: Repair for insufficient clearance from exhaust AND drive shaft

FIG 7 & 8: Gas hose should be secured to the floor with at least 1 P-clamp in center of vehicle between frame rails. Install additional P-clamps as needed to provide sufficient clearance. The LP hose should be taut to frame without restricting flow of LP.

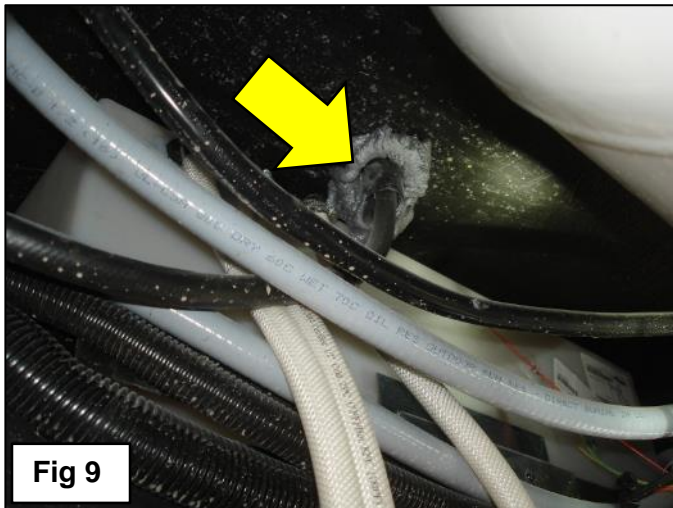


FIG 9: Push any excess LP hose up through the floor. Hose should remain taut from the LP manifold to where it goes up into the floor on driver side of the unit.

B: Replace LP hose if worn, burnt, and/or scuffed in anyway : Parts Kit 17V-590B

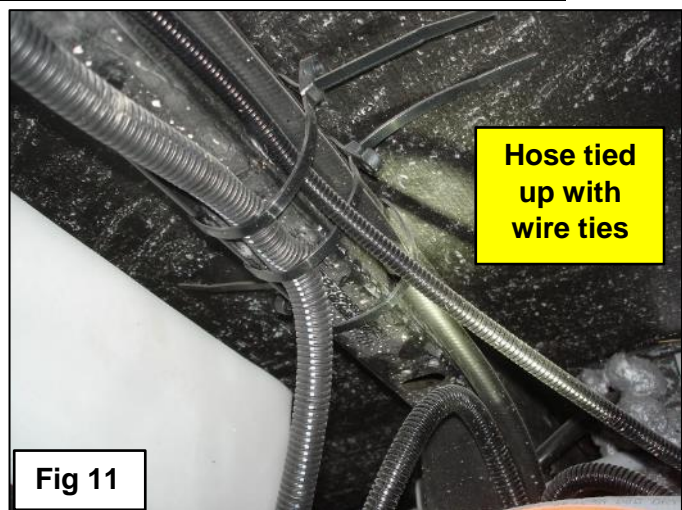
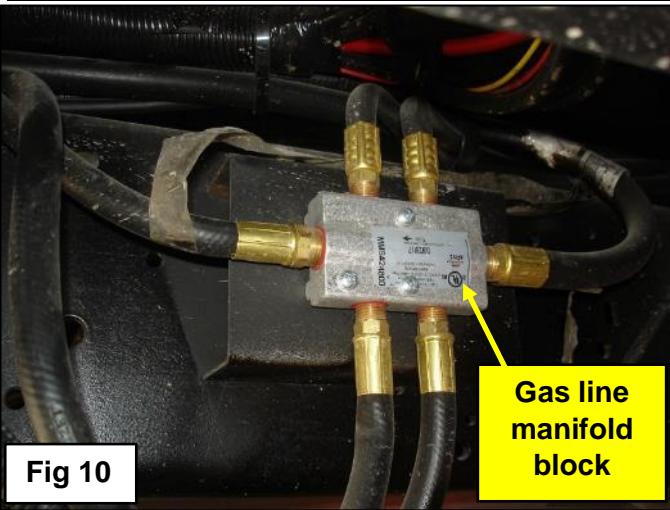


FIG 10: Remove the damaged hose from the manifold block with the 9/16" open end wrench. Remove the damaged hose from the stove connection with a 3/4" open end wrench.

Replace all P-clamps in the original locations to hold the new hose in place. Hose should be taut so it is not hanging or dangling, without restricting the flow of LP. Secure the LP hose to the manifold block, and to the stove above the floor. Inspect LP hose to ensure there are no restrictions to gas flow.

Perform LP test.