



Technical Service Bulletin

GROUP RECALL	NUMBER 17-01-071
DATE DECEMBER, 2017	MODEL(S) SANTA FE (NC)

SUBJECT: SANTA FE 3.3L V6 ENGINE INSPECTION AND REPLACEMENT
(RECALL CAMPAIGN 168)

★ IMPORTANT

*** Dealer Stock and Retail Vehicles ***

Dealers must perform this Recall Campaign on all affected vehicles prior to customer retail delivery and whenever an affected vehicle is in the shop for any maintenance or repair.

When a vehicle arrives at the Service Department, access Hyundai Motor America's "Warranty Vehicle Information" screen via WEBDCS to identify open Campaigns.

Description: Certain Santa Fe 3.3L V6 engines may contain crankshafts with pin surface irregularities. This can lead to premature crankshaft and/or engine bearing wear. A worn engine bearing or crankshaft may result in knocking noise, reduced power and/or hesitation, illumination of the check engine light or oil pressure warning lamps. If the vehicle continues to be driven with a worn engine bearing or crankshaft, the engine could stall. This bulletin describes the procedure to inspect the crankshaft and replace the engine if necessary.

Applicable Vehicles: Certain 2017 Model Year Santa Fe (NC) vehicles with 3.3L V6 engines

Parts Information:

Procedure / Model	Part Name	Part Number	Qty
Inspection with Engine Replacement / Santa Fe (2WD)	Sub Engine	171R1-3CAAAQQH	1
	Front Muffler Gasket	28751-2B550	2
Inspection with Engine Replacement / Santa Fe (4WD)	Sub Engine	173R1-3CAAAQQH	1
	Front Muffler Gasket	28751-2B550	2
Inspection with Engine Oil & Oil Filter Change / Santa Fe (2WD/4WD)	Oil Filter	26320-3CAA0	1
	RTV Silicone	00232-19061	1
	Front Muffler Gasket	28751-2B550	2
	Gasket-Oil Plug	21513-23001	1

Note: Order the required parts based on the inspection results as described in the Service Procedure.

SST Information:

Description	Part Number	Qty
Borescope Camera (Requires CameraFi app on GDS Mobile. See note below.)	000CA-MP168	1
Oil Pan Remover (Supplied by Bosch)	09215-3C000	1

NOTE 1: Dealers that have dealer stock will be provided with 1 borescope. Additional units can be ordered through the PDC.

NOTE 2: To install the CameraFi app, launch the “Google Play Store” app (Google account required) on the GDS Mobile. Then search for the app “CameraFi - USB Camera / Webcam” and install it.

Warranty Information:

Model	Op. Code	Operation	Op. Time	Causal Part No.	Nature Code	Cause Code
Santa Fe (2WD/4WD)	71C088R0	CRANKSHAFT LOT INSPECTION	1.5 M/H	623R6-3CA0A	Q75	ZZ7
Santa Fe (2WD)	71C088R1	CRANKSHAFT LOT INSPECTION AND ENGINE REPLACEMENT (2WD)	8.7 M/H	623R6-3CA0A	Q75	ZZ7
Santa Fe (4WD)	71C088R2	CRANKSHAFT LOT INSPECTION AND ENGINE REPLACEMENT (4WD)	9.1 M/H	623R6-3CA0A	Q75	ZZ7

NOTE 1: Submit Claim on Campaign Claim Entry Screen

NOTE 2: For inspection with engine oil & oil filter change, 6 qt. of engine oil will be reimbursed. For inspection with engine replacement, 7 qt. of engine oil and 10 qt. of coolant will be reimbursed.

NOTE 3: If a part is found in need of replacement while performing this Campaign and the affected part is still under warranty, submit a separate claim using the same Repair Order.

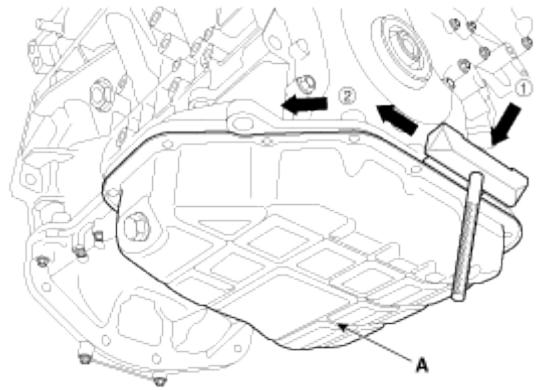
Service Procedure:

1. Carefully remove the lower oil pan using the oil pan remover SST and referring to applicable vehicle shop manual.

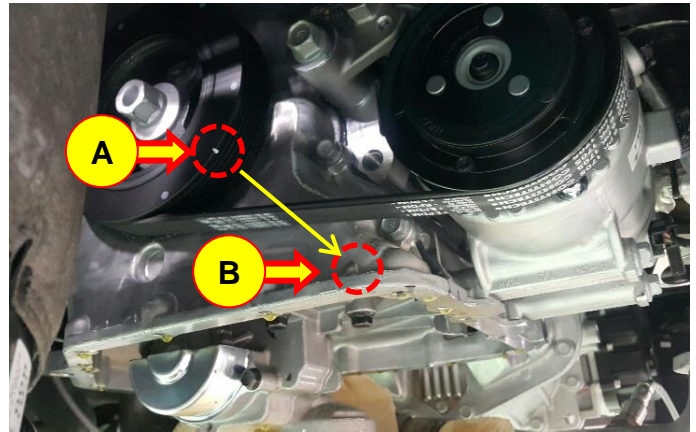
**Tightening torque : 9.8 ~ 11.8 N.m
(1.0 ~ 1.2 kgf.m, 7.2 ~ 8.7 lb-ft)**

NOTICE

Carefully remove the oil pan. It will be reused if engine replacement is not required.

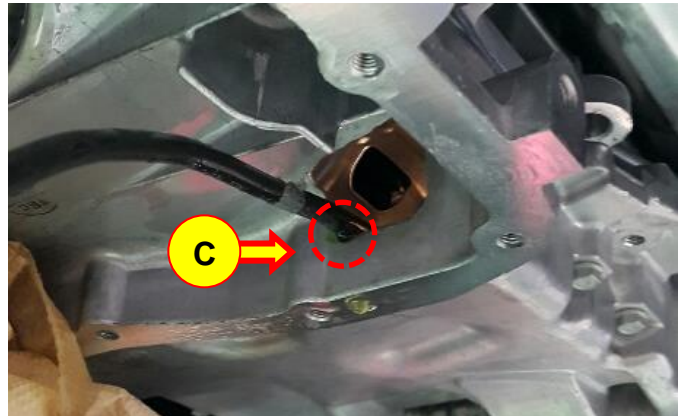


2. Align the timing mark (A) of the damper pulley to location (B) by rotating the crankshaft.



3. Connect the borescope to the GDS Mobile and then launch the CameraFi app. Refer to "SST Information" section of this TSB if the app is not installed yet.

Insert the borescope into the hole of the oil pan at a depth no greater than the rubber stopper as shown. Align the borescope to the bottom left corner (C).

**NOTICE**

If the borescope does not display in the CameraFi app, restart the GDS and reopen the CameraFi app.

4. Inspect the crankshaft lot number using the borescope. Feed the borescope through the oil pan along the path shown.

If the lot number is not visible upon first inspection, rotate the crankshaft slightly and check again.

If the lot number is 1:

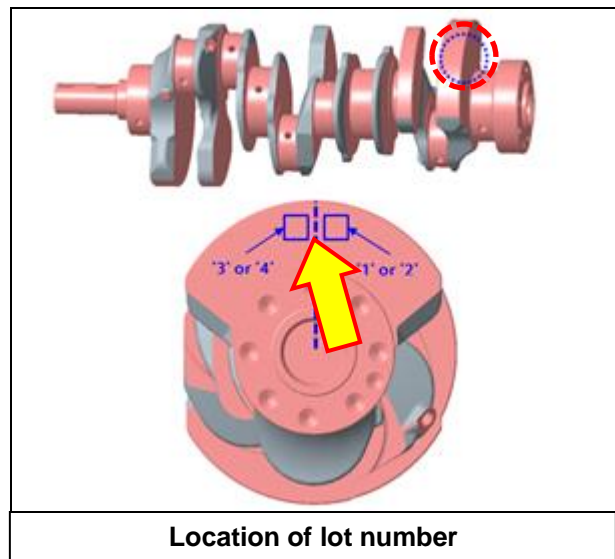
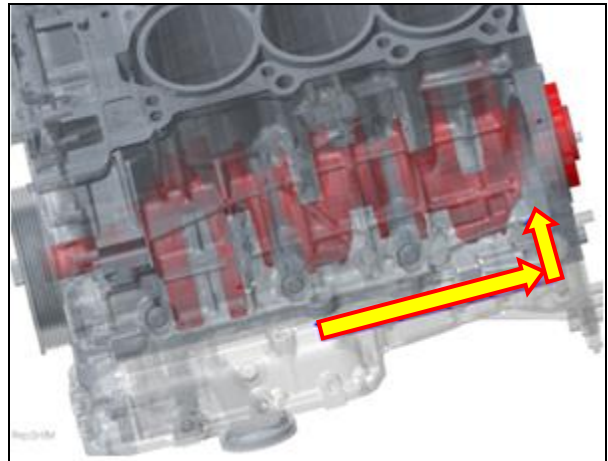
Record the lot number on the repair order and replace the engine sub assembly according to the Shop Manual.

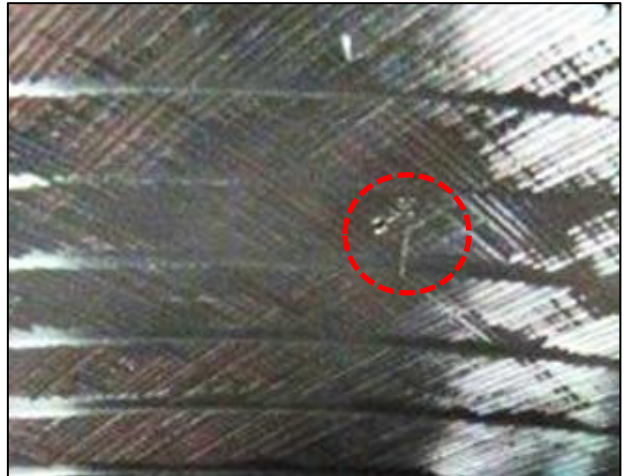
If the lot number is 2, 3, or 4:

Record the lot number on the repair order, reinstall all removed parts in the reverse order of removal, and change the engine oil and oil filter. Engine replacement is **NOT** required.

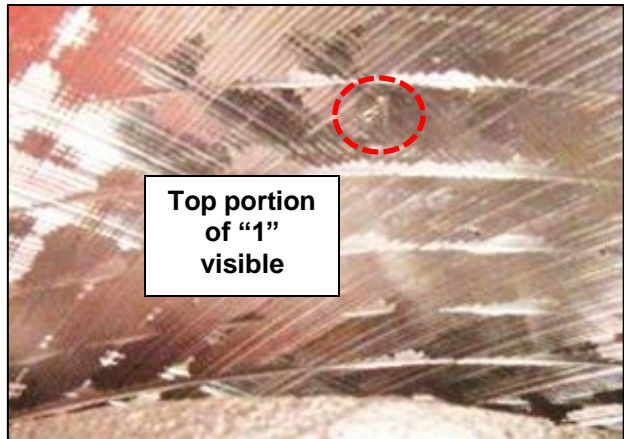
NOTICE

The lot number may be partially inscribed on the crankshaft. Refer to the photos for examples where the lot number is "1".





**Example of lot number "1"
(lot number partially inscribed)**



**Example of lot number "1"
(lot number partially inscribed)**