

Recall Bulletin 170823REV



RECALL BULLETIN:
170823REV

YEAR(S) AFFECTED:
2018

PRODUCT(S) AFFECTED:

Fleetwood
Jamboree
manufactured
6/2/2017 through
8/15/2017

Holiday
Rambler Vesta
manufactured
6/7/2017 through
8/22/2017

MODEL(S) AFFECTED:
All

SUBJECT:

Correction
of Class C
Generator
Junction Box
Wiring

KEYWORDS:

Generator,
Junction Box

ISSUE DATE:

September 2017

The purpose of this Recall Service Bulletin is to inform REV Recreation Group dealers of the need to correct improperly prepared wiring inside the generator's junction box on certain model year 2018 Class C motor homes manufactured at REV's Elkhart, Indiana manufacturing facility between June 2, 2017 and August 22, 2017.

A list of affected vehicles appears at the end of this Bulletin.

CONDITION:

On motorhomes affected by this recall, the generator's junction box wiring may have been inadequately stripped before being connected. If the generator's junction box wiring was inadequately stripped, the wires may short, creating a risk of a fire.

CORRECTION:

Follow the steps below to re-strip and reconnect the junction box wiring. Read the entire procedure carefully and heed all safety precautions. Contact REV Dealer Technical Support with any questions before beginning any work.

Fleetwood Dealer Technical Support (800) 816-9825

Holiday Rambler Dealer Technical Support: (877) 332-9239

1. Park the motorhome on dry, level pavement, positioned with adequate space to access the generator area. Place the transmission into PARK and set the parking brake.
2. Block wheels to prevent movement. Maintain control of keys while work is performed.



WARNING

- REMOVE JEWELRY BEFORE BEGINNING WORK.
- ENSURE THE GENERATOR IS **NOT** RUNNING AND THE GENERATOR POWER SWITCH IS TURNED **OFF**. DISABLE AUTO GENERATOR START.
- ENSURE THE VEHICLE IS **NOT** PLUGGED INTO SHORE POWER.
- REMOVE THE GENERATOR'S MAINTENANCE ACCESS COVER AND DISCONNECT THE POSITIVE BATTERY CABLE AT THE GENERATOR. PERFORM ALL WORK WITH THE GENERATOR OFF AND THE POSITIVE BATTERY CABLE DISCONNECTED.

© 2017 REV Recreation Group, Inc.

This bulletin is supplied for technical information only and is not an authorization for repairs.

Federal law (section 154 of the national traffic and motor vehicle safety act of 1966) requires that: If you have received a notice of recall or failure to comply from REV Recreation Group or any component Manufacturer, you must repair or otherwise correct the defects on vehicles remaining in your inventory, according to the notification, before selling or leasing the vehicles. Any vehicle lessor receiving this recall notice must forward a copy of the notice to the lessee within ten days.

"It is impossible to know, evaluate and advise the service trade of all conceivable ways in which service might be done or of the possible hazardous consequences of each way. Accordingly, anyone who uses a service procedure or tool must first assure that neither personal safety nor vehicle safety will be jeopardized by the selected service methods."

3. Referring to Figure 1, locate the generator's junction box.
4. Remove the four screws holding the cover on the junction box. The cover and screws will be reinstalled later in this procedure.

IMPORTANT: If you discover any damage to the junction box components or the generator wiring, contact Dealer Technical Support for instructions and assistance.

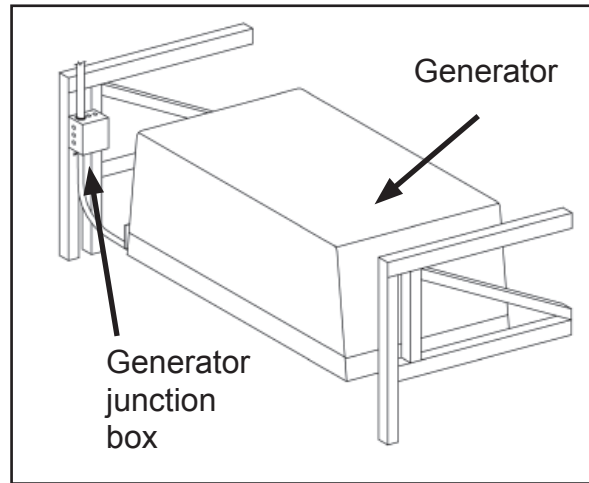


Figure 1

⚠ WARNING

The following step is to be followed to check for electrical power in each wire prior to beginning the repair. Read the instructions carefully and proceed with extreme caution.

Work on only one set of joined wires at a time.

Perform all work with the generator engine off and the positive battery cable disconnected at the generator. Live wires could cause fatal electrocution.

5. Carefully pull out a set of joined wires from the junction box. Unwrap the electrical tape from the wires and wire nut. Avoid cutting the tape off as wire damage may result.

Using a volt meter with the selector switch set to "AC 200 volts" or greater, slide the red (positive) probe inside the wire nut and touch the black (negative) probe to a ground source to complete the circuit. If the volt meter reads "0 volts", it is safe to proceed to Step 6.

Do not proceed if the volt meter is registering any electrical current. Call Dealer Technical Support for instructions and assistance.

6. Remove the wire nut from the wire assembly. Untwist the wires to separate them, and trim the ends of the wires if necessary. Referring to Figure 2, strip back 1" of jacket insulation from the wire, using care to avoid damaging any of the conductor. Repeat for the second and/or third wire in the assembly.

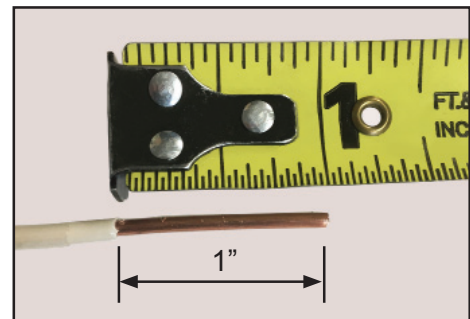


Figure 2
Properly stripped wire

This bulletin is supplied for technical information only and is not an authorization for repairs.

Federal law (section 154 of the national traffic and motor vehicle safety act of 1966) requires that: If you have received a notice of recall or failure to comply from REV Recreation Group or any component Manufacturer, you must repair or otherwise correct the defects on vehicles remaining in your inventory, according to the notification, before selling or leasing the vehicles. Any vehicle lessor receiving this recall notice must forward a copy of the notice to the lessee within ten days.

"It is impossible to know, evaluate and advise the service trade of all conceivable ways in which service might be done or of the possible hazardous consequences of each way. Accordingly, anyone who uses a service procedure or tool must first assure that neither personal safety nor vehicle safety will be jeopardized by the selected service methods."

7. Re-connect the wires as shown in Figures 3 and 4.
8. Place a new red wire nut over the wires and screw it into place. Ensure there is no exposed copper. The finished assembly should look like Figure 5.
9. Wrap the wire nut and wires with a minimum of three full wraps of electrical tape. See Figure 6.
10. Repeat steps 5 through 9 for the remaining wires in the junction box, working on one set at a time.
11. If the junction box cover is damaged, replace the cover.
12. Reinstall the junction box cover and tighten the screws to secure. Do not overtighten the screws as doing so may crack the cover.
13. Reconnect the positive battery cable at the generator and torque the connection to 12-14 ft-lbs. Reinstall the generator's maintenance access cover. Close the generator compartment door.
14. Turn on the generator power switch. Start the generator to ensure proper function. If corrections are necessary, heed all warnings and precautions on Pages 1 and 2.



Figure 3
Properly joined solid copper wire

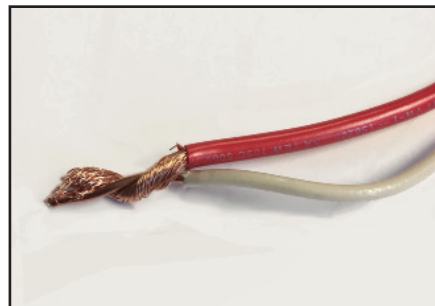


Figure 4
Wind stranded wire around solid wire

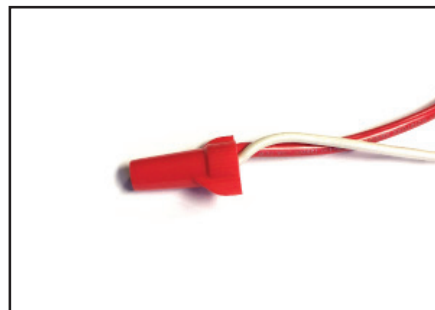


Figure 5
Properly installed wire nut with no exposed copper.

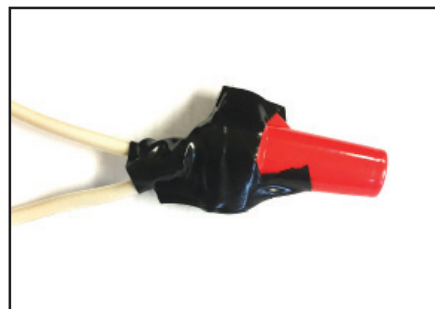


Figure 6
Wrap electrical tape around wires and wire nut a minimum of 3 times

This bulletin is supplied for technical information only and is not an authorization for repairs.

Federal law (section 154 of the national traffic and motor vehicle safety act of 1966) requires that: If you have received a notice of recall or failure to comply from REV Recreation Group or any component Manufacturer, you must repair or otherwise correct the defects on vehicles remaining in your inventory, according to the notification, before selling or leasing the vehicles. Any vehicle lessor receiving this recall notice must forward a copy of the notice to the lessee within ten days.

"It is impossible to know, evaluate and advise the service trade of all conceivable ways in which service might be done or of the possible hazardous consequences of each way. Accordingly, anyone who uses a service procedure or tool must first assure that neither personal safety nor vehicle safety will be jeopardized by the selected service methods."

PARTS - OBTAIN LOCALLY

Electrical Tape 1 roll
Red twist-on wire nuts As required

TOOLS

Flat Head Screwdriver
Wire cutters
Wire Strippers
Wheel chocks
Tape Measure
Torque wrench capable of measuring 12-14 ft-lbs.
Wheel chocks

Warranty Labor Allowance:

Use Flat Rate Codes:

Recall 170823REV Class C Generator Junction Box Wiring Inspected/Defective/Repaired
6065 - 12 0.40 hr. Inspected/Defective/Repaired

*If you have any questions concerning this bulletin,
contact Dealer Technical Support:*

Fleetwood Dealer Technical Support: (800) 816-9825
Monaco/Holiday Rambler Dealer Technical Support: (877) 332-9239

Service Literature is available at: <http://www.revrdealers.com>

This bulletin is supplied for technical information only and is not an authorization for repairs.

Federal law (section 154 of the national traffic and motor vehicle safety act of 1966) requires that: If you have received a notice of recall or failure to comply from REV Recreation Group or any component Manufacturer, you must repair or otherwise correct the defects on vehicles remaining in your inventory, according to the notification, before selling or leasing the vehicles. Any vehicle lessor receiving this recall notice must forward a copy of the notice to the lessee within ten days.

"It is impossible to know, evaluate and advise the service trade of all conceivable ways in which service might be done or of the possible hazardous consequences of each way. Accordingly, anyone who uses a service procedure or tool must first assure that neither personal safety nor vehicle safety will be jeopardized by the selected service methods."