



An Oshkosh Corporation Company

SAFETY NOTICE

NHTSA Campaign No:17V-515

Transport Canada Recall: 2017448

Safety Technical Bulletin: TB2017006 2017 Ford Chassis Front Jump Start Plug Modification

Subject:	Ford MY2017 Chassis: Front Jump Start Plug
From:	IMT Technical Support (800-554-4421 or 641-923-4633)
Date:	September, 2017
Affected Models:	Model Year 2016 & 2017 Dominator Contractor Series (Dom CS) Mounted on a Ford MY2017 Super Duty Chassis

MANDATORY REPAIR - SAFETY CONCERN - PROMPT ACTION REQUIRED

IMT has decided that a concern affecting safety exists in a possible short circuit between the fuse holder on the front jump start plug and the chassis hood, which could increase the risk of a fire causing injury and/or property damage.

This technical bulletin is to instruct trained personnel on how to carry out the mandatory repair related to this defect. The bulletin should be read and understood in its entirety before performing this procedure. IMT has provided within this instructional document two options:

- 1. REMOVE:** Front jump start plug, and all of the components will be eliminated. If you choose this procedure, you will no longer be able to perform a jump start using the under hood mounted jump start plug. In addition, you will no longer be able to use this under hood mounted plug as a power source for other equipment. IMT will reimburse 30 minutes of labor to complete this removal.
- 2. REPLACE:** Front jump start plug bracket will cause no change to the functionality of the front jump start plug. A new bracket and decal will be provided at no cost to the customer, along with 30 minutes of labor to complete this replacement.

Please be reminded that it is a violation of Federal law for you to sell or lease the trucks covered by this notification until this recall has been performed on these vehicles. Substantial civil penalties apply to violations of this law.

SAFETY NOTICE
Follow your company's Lock-Out/Tag-Out procedures to prevent the truck from being started or moved while performing work on this crane. If your company does not have a Lock-Out/Tag-Out procedure, follow OSHA 1910.147,

SAFETY NOTICE
Use appropriate Personal Protective Equipment (PPE) as required by your company. Read and understand the following instructions found within this document prior to starting work on the chassis.

Tool List:

- 10 mm Socket
- 1/2" Socket
- 11/32" Socket
- PH1 Phillips Screwdriver

TB2017006 - FORD MY2017 CHASSIS FRONT JUMP START PLUG BRACKET REPLACEMENT PARTS LIST

ITEM	PART NO.	DESCRIPTION	QTY.	LIST PRICE
1.	60145463	BRACKET-JUMP START U-HOOD 2017 FORD	1	Warranty/No Charge
*2.	70399937	DECAL-300 AMP MAX	As Required	Warranty/No Charge
*3.	70397213	DECAL-175 AMP MAX	As Required	Warranty/No Charge

* Decals will be determined by IMT based on body serial number found in left front compartment.

**If you have questions or need additional assistance, please contact:
IMT Technical Support at 800-554-4421 or 641-923-4633.**

OPTION 1: Front Jump Start Plug Removal


1. Disconnect and secure all negative battery lugs from batteries. Depending on the model batteries are located:
 - Passenger side under hood.
 - Driver side under hood
 - Inside the crane compartment.



Passenger Side



Driver Side

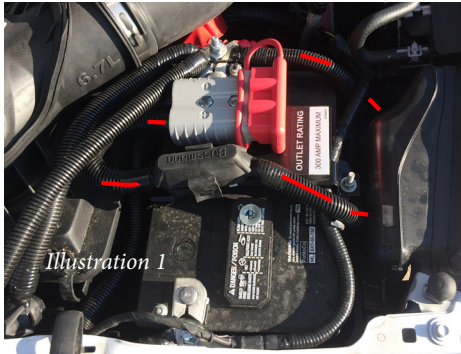
	WARNING
<p>For trucks without a battery disconnect switch, to prevent accidental vehicle start-up, which could cause death or serious injury, disconnect battery cables (negative cable first) before proceeding.</p> <p>Disconnect negative (-) battery cable first, if positive (+) cable should contact ground with negative (-) cable connected, the resulting sparks can cause a battery explosion, which could result in death or serious injury.</p>	



Right Rear Compartment

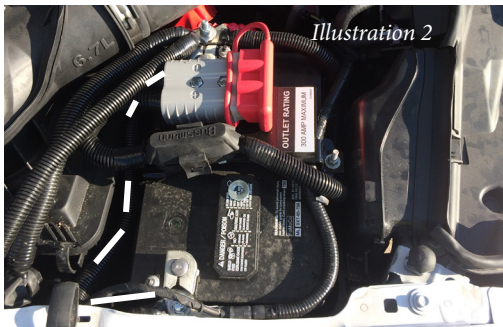
OPTION 1: Front Jump Start Plug Removal

2. Follow the positive battery cable from the front jump start plug to the fuse holder, continue following the positive battery cable to the positive battery post. Disconnect the positive battery cable from the battery lug. (Red line represents positive battery cable) (See Illustration 1)



Note: Cable routing may vary slightly from picture.

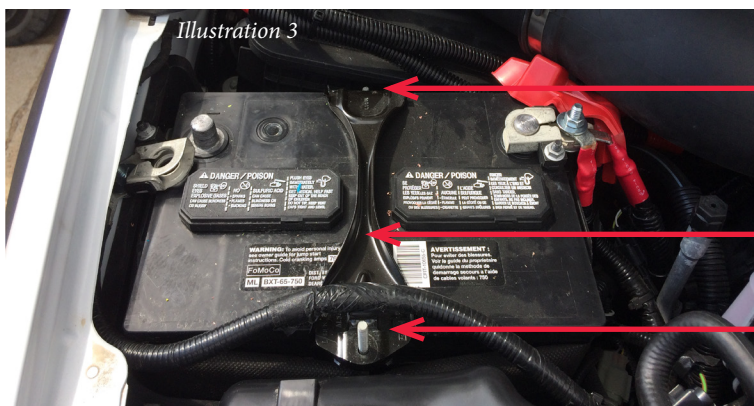
3. Follow the negative battery cable from the front jump start plug to the negative battery post. Disconnect the negative battery cable from the negative battery lug. (White line represents negative battery cable) (See Illustration 2)



Note: Cable routing may vary slightly from picture.

4. Remove the two nuts holding the battery hold down bracket and the front jump start plug bracket. Remove the front jump start plug bracket assembly that includes the bracket, the front jump start plug, the fuse holder, and the attached cables.

5. Replace the two nuts that hold the battery hold down bracket and verify that the battery is held securely in place. (See Illustration 3)



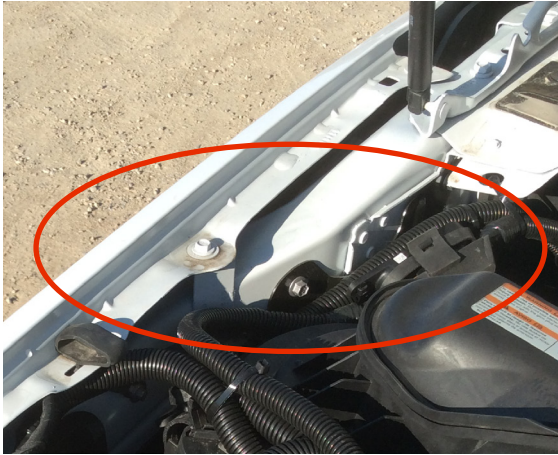
Battery hold down bracket nut.

Battery hold down bracket.

Battery hold down bracket nut.

OPTION 1: Front Jump Start Plug Removal

6. Connect remaining positive cables to the positive battery lug and remaining negative cables to the negative battery lug.
7. Reconnect the negative battery lugs to the batteries.



Note:
Inspect fuse holders under the hood to make sure they did not shift during this process.

WARNING

AVOID POSSIBLE FIRE!

Visually inspect and verify no other fuse holder posts are coming in contact with the chassis.

The contact of the fuse to the hood may leave a black mark from the rubber cover or damage the hood material if the bare stud contacts the hood.

Failure to inspect and verify the fuse holder posts could result in a fire in the dash and under the hood of the chassis. A fire could result in serious injury or death.

OPTION 2: Front Jump Start Plug Bracket Replacement

1. *Disconnect and secure all negative battery lugs from batteries. Depending on the model batteries are located:*
 - *Passenger side under hood.*
 - *Driver's side under hood.*
 - *Inside the crane compartment.*



Passenger Side



Driver's Side



Right Rear Compartment



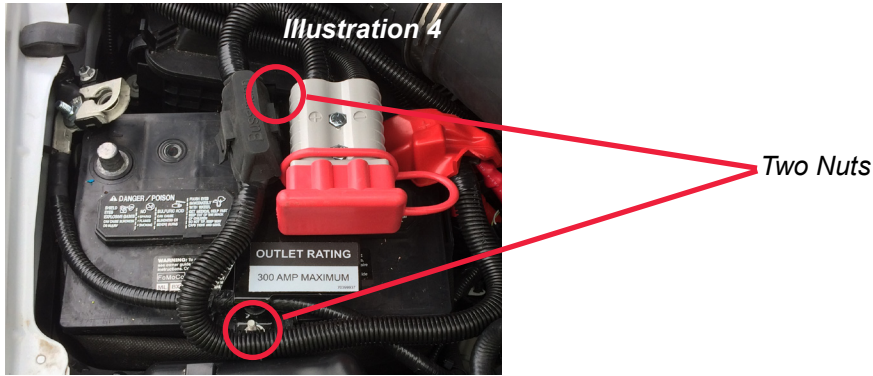
WARNING

For trucks without a battery disconnect switch, to prevent accidental vehicle start-up, which could cause death or serious injury, disconnect battery cables (negative cable first) before proceeding.

Disconnect negative (-) battery cable first, if positive (+) cable should contact ground with negative (-) cable connected, the resulting sparks can cause a battery explosion, which could result in death or serious injury.

OPTION 2: Front Jump Start Plug Bracket Replacement

2. Remove the two nuts holding the front jump start bracket. (See Illustration 4)



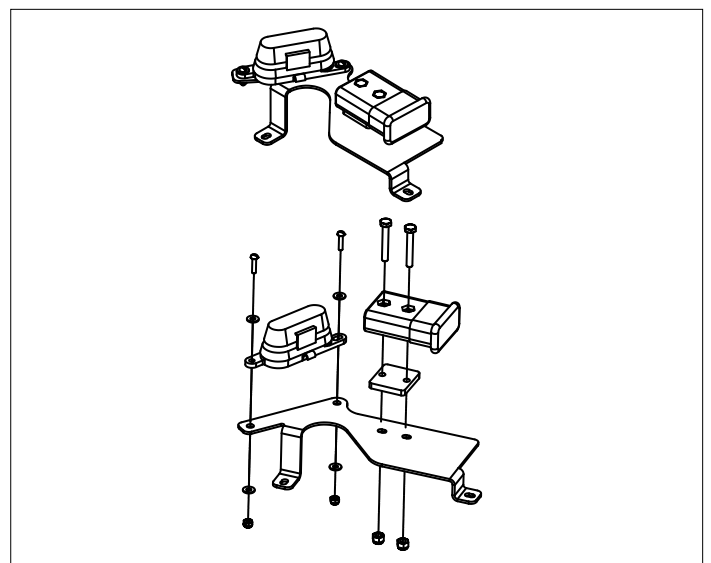
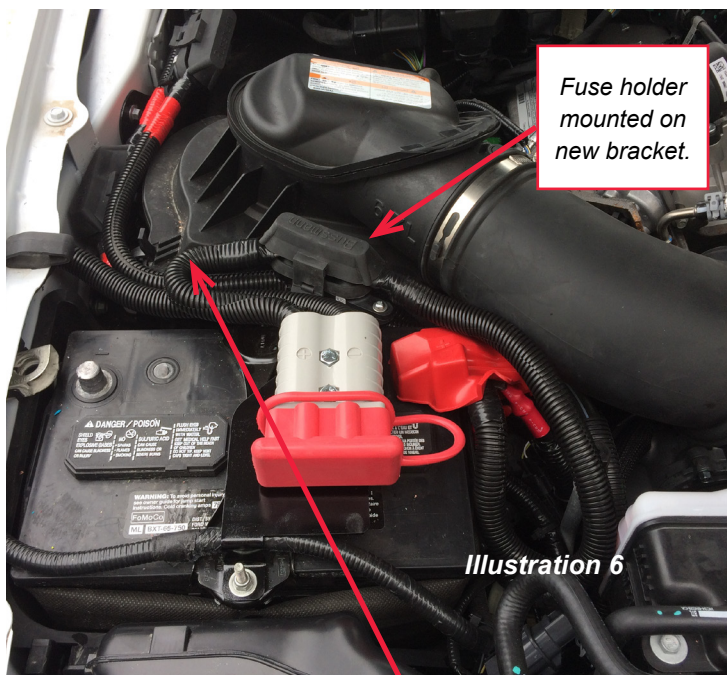
3. Remove the positive jump start plug cable from the fuse holder to simplify the cable routing. (See Illustration 5)

Positive jump start plug cable removed from the fuse holder.



4. Remove the fuse holder and the jump start plug off the hold down bracket. **Discard** this bracket and replace with part number: 60145463, BRACKET-JUMP START U-HOOD FORD MY2017.

5. Mount the fuse holder and the front jump start plug on the bracket (as shown in the illustration below). The fuse holder hold down screw heads are to be mounted on the fuse holder side. Route the positive jump start plug cable (as shown in illustration below) to the fuse holder and connect. Mount the bracket on top of the battery hold down bracket by using the **original fasteners** and verify that the battery is held securely in place. (See Illustration 6)



OPTION 2: Front Jump Start Plug Bracket Replacement



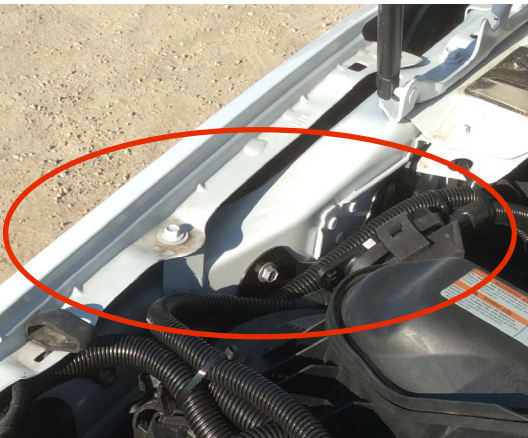
6. Place the supplied capacity decal on the bracket.
NOTE: *Decals will be determined by IMT based on body serial number found in left front compartment. (See Illustration 7)



Illustration 7

7. Reconnect the negative battery lugs to the batteries.

Note:
Inspect fuse holders under the hood to make sure they did not shift during this process.



WARNING

AVOID POSSIBLE FIRE!

Visually inspect and verify no other fuse holder posts are coming in contact with the chassis.

The contact of the fuse to the hood may leave a black mark from the rubber cover or damage the hood material if the bare stud contacts the hood.

Failure to inspect and verify the fuse holder posts could result in a fire in the dash and under the hood of the chassis. A fire could result in serious injury or death.

Subject:	Ford MY2017 Chassis: Front Jump Start Plug Modifications
From:	IMT Technical Support (800-554-4421 or 641-923-4633)
Date:	September, 2017
Affected Models:	Model Year 2016 & 2017 Dominator Contractor Series (Dom CS) Mounted on a Ford MY2017 Super Duty Chassis

What will we do?

The front jump start plug bracket and decal will be supplied at no cost, along with reimbursement of 30 minutes labor for each affected model listed above.

What will you do?

You must fill out the order form located below with the chassis model number and the IMT body serial number and fax or email to IMT.

Do you have questions?

If you have questions or need additional assistance, please contact IMT Technical Support at 800-554-4421 or 641-923-4633.

ORDER FORM

TB2017006- Ford Chassis Front Jump Start Plug Replacement

60145463, Bracket

70399937, Decal - 300 Amp Max

70397213, Decal - 175 Amp Max

Chassis Model: _____

IMT Body Serial Number: _____

Fill in location and contact information

Ship To:	
Address:	
Contact:	
Phone:	
Email:	

Please fax or email this form to :

IMT Customer Service

FAX: 641-923-4038

EMAIL: parts@imt.com