

Pioneer RD210 & BH250 Securing LP Hose to frame

Description

It has been decided the vehicles in this recall population may have been manufactured without properly attaching the LP hose against the frame. This would allow the hoses to rub against the tire during travel. The instructions are to install a D style clamp to secure the hoses against the frame.

Inspection & Repair

Identify the camper and inspect the Hose location on the off door side.

1. LP hoses clamped to frame – no repair required file claim for inspection only.

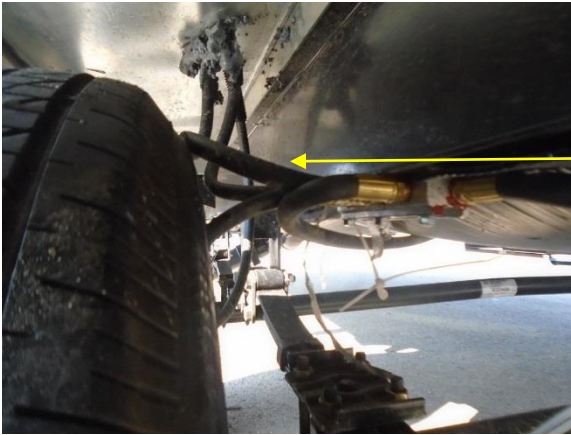


D clamp securing
Hoses. No repair
required.

File Recall Inspection warranty claim using warranty code 99.01.34.L, for 0.10 hours.

Note: No warranty will be paid if the VIN is not part of the affected list.

- Hoses not secured, will require the installation of a Vinyl coated D style hose clamp.



No bracket
Hoses loose.
Repair
required

- Check hoses for damage, if hoses are damaged call Customer service for additional authorization. If NO damage install clamp and file warranty claim using the code below.

Parts

Use clamp from inventory if no inventory order D style hose clamp Part # 014700,

Warranty

File Recall Repair warranty claim using warranty code 99.01.34.A, for 0.3 hours

**Please refer all questions and authorization requests to Heartland Dealer Services
Department 877-262-8032**