

Reference:

ITB17-044

Date:

July 26, 2017

VOLUNTARY SAFETY RECALL CAMPAIGN 2016-2017 Q50 AND 2017 Q60 WITH 2.0L TURBO ENGINE; FUEL PUMP CONTROL MODULE

CAMPAIGN ID #: R1717
APPLIED VEHICLES: 2016-2017 Q50 (V37)
2017 Q60 (V37)
APPLIED ENGINE: 2.0L turbo gasoline

Check Service COMM to confirm campaign eligibility.

INTRODUCTION

Infiniti is conducting this voluntary safety recall campaign on certain specific model year 2016-2017 Q50 and 2017 Q60 vehicles equipped with a 2.0L turbo gasoline engine. The fuel pump control module ("FSCM") will be reconfigured. This service will be performed at no charge to the customer for parts or labor.

IDENTIFICATION NUMBER

Infiniti has assigned identification number R1717 to this campaign. This number must appear on all communication and documentation of any nature dealing with this campaign.

DEALER RESPONSIBILITY

It is the dealer's responsibility to check Service COMM for the campaign status on each vehicle falling within the range of this voluntary safety recall which for any reason enters the service department. This includes vehicles purchased from private parties or presented by transient (tourist) owners and vehicles in a dealer's inventory. **Federal law requires that new vehicles in dealer inventory which are the subject of a safety recall must be corrected prior to sale. Failure to do so can result in civil penalties by the National Highway Traffic Safety Administration.** While federal law applies only to new vehicles, Infiniti strongly encourages dealers to correct any used vehicles in their inventory before they are retailed.

Infiniti Bulletins are intended for use by qualified technicians, not 'do-it-yourselfers'. Qualified technicians are properly trained individuals who have the equipment, tools, safety instruction, and know-how to do a job properly and safely. NOTE: If you believe that a described condition may apply to a particular vehicle, DO NOT assume that it does. See your Infiniti retailer to determine if this applies to your vehicle.

SERVICE PROCEDURE

1. Connect the CONSULT-III plus (C-III plus) plus VI to the vehicle.
2. Turn the ignition ON (engine OFF).
3. Turn ON the CONSULT PC.
4. Open C-III plus and wait for the plus VI to be recognized.
5. Select **Re/programming, Configuration**.

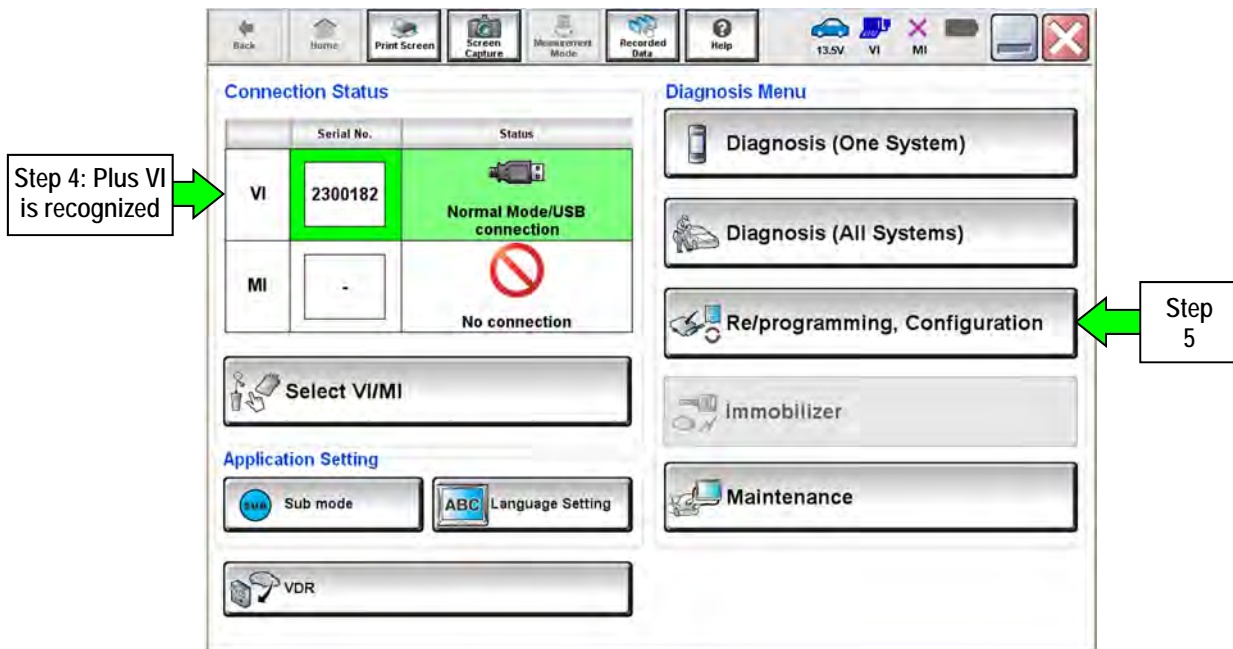


Figure 1

6. Check the box for **Confirmed instructions**, and then select **Next**.

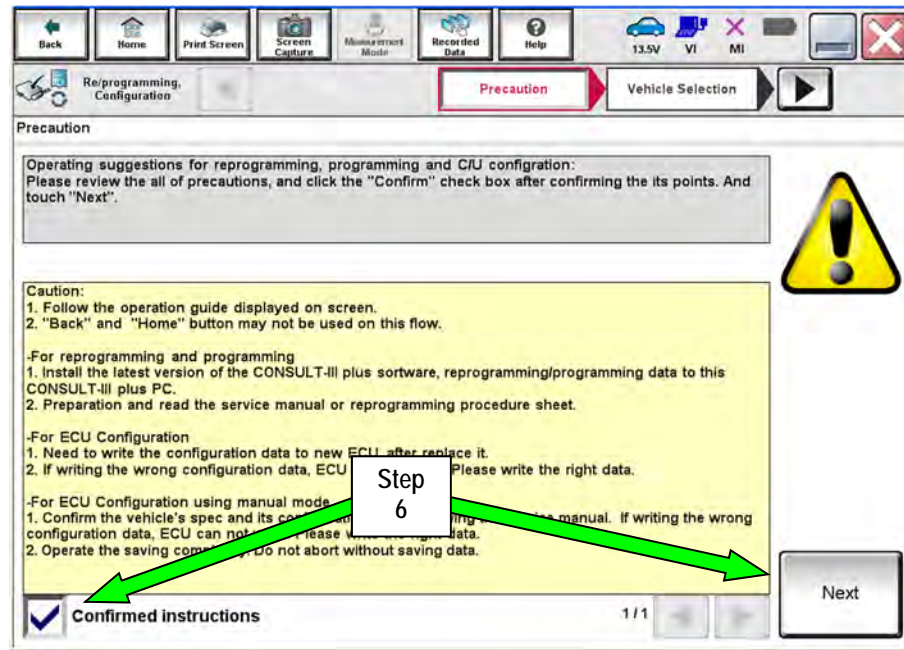


Figure 2

7. If the screen in Figure 3 displays, select **Automatic Selection(VIN)**.

8. If the screen in Figure 3 does not display, skip to step 9.

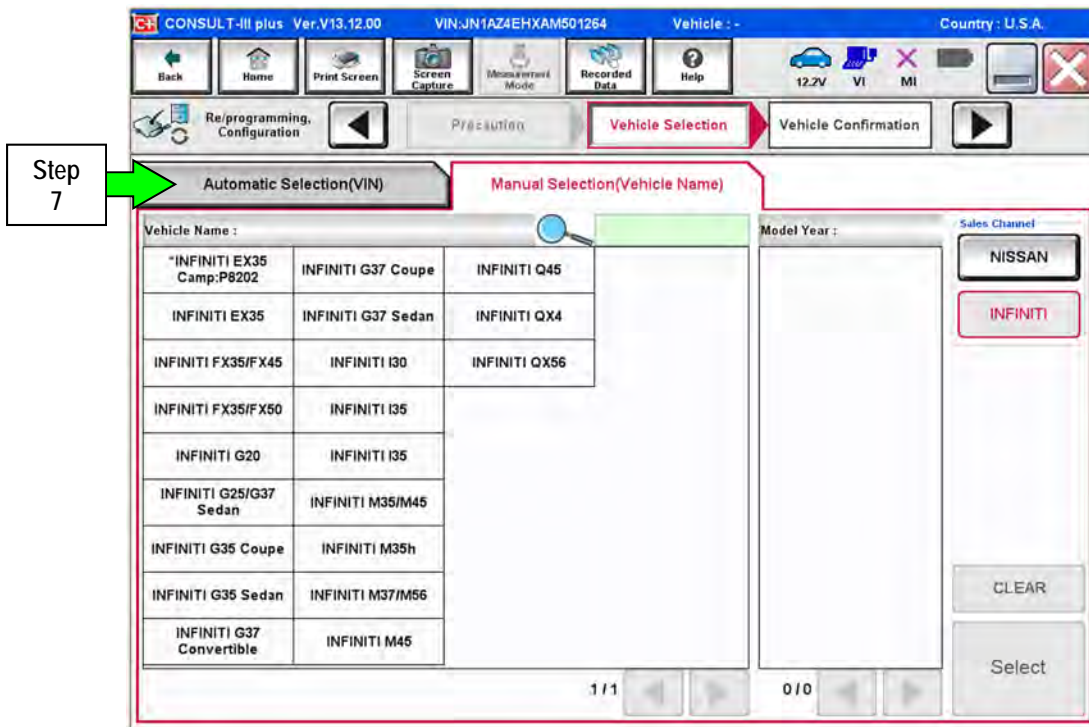


Figure 3

9. Verify the VIN or Chassis # matches that of the vehicle.

- If the correct VIN is displayed, select **Confirm**.

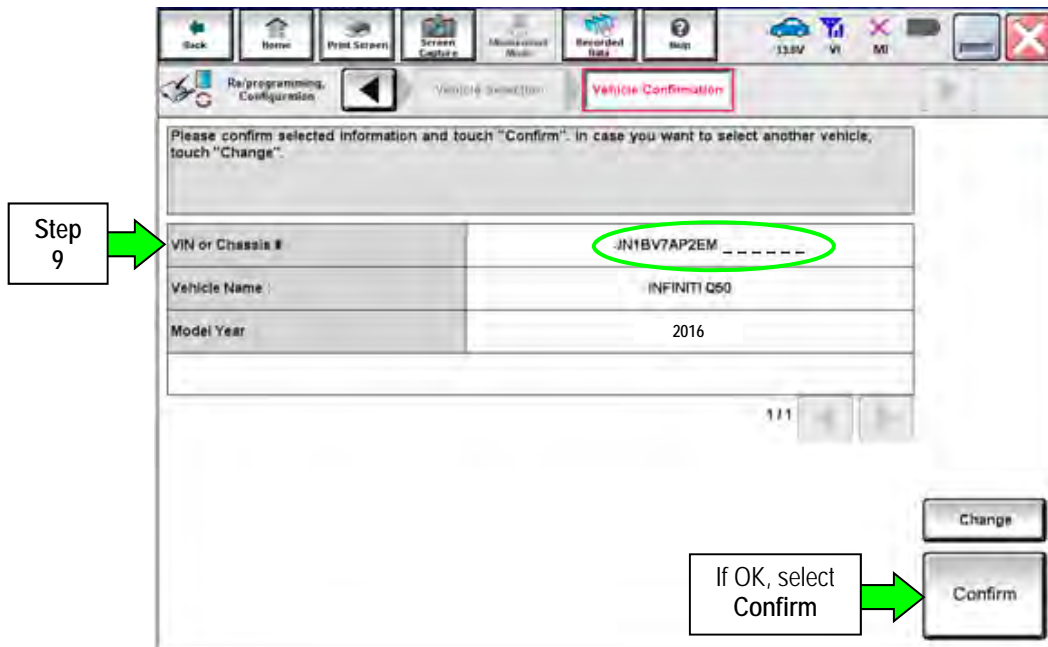


Figure 4

10. Select **Confirm** again.

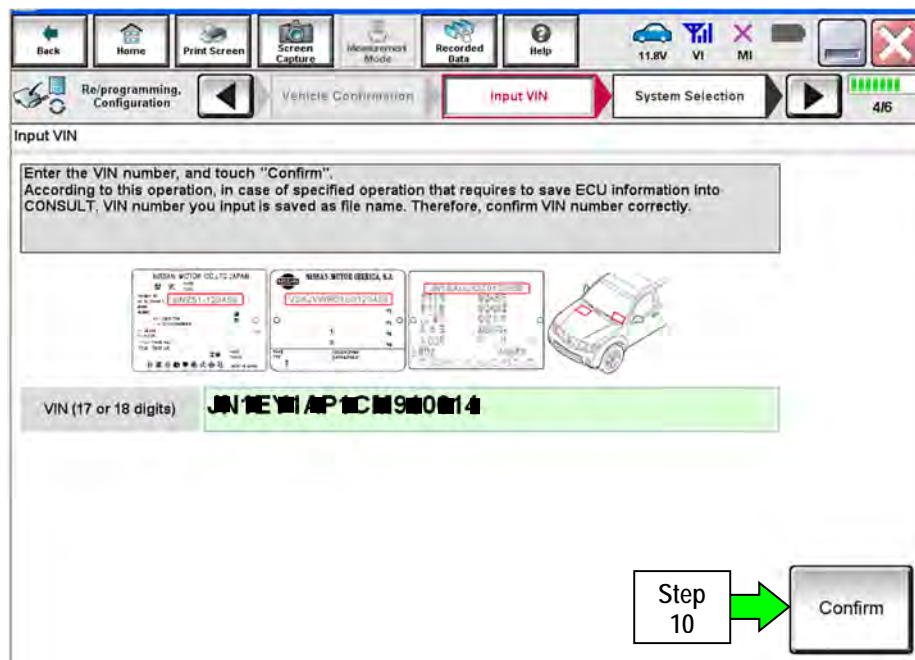


Figure 5

11. Select FSCM.

- If needed, use the page arrows to scroll and find the correct section.

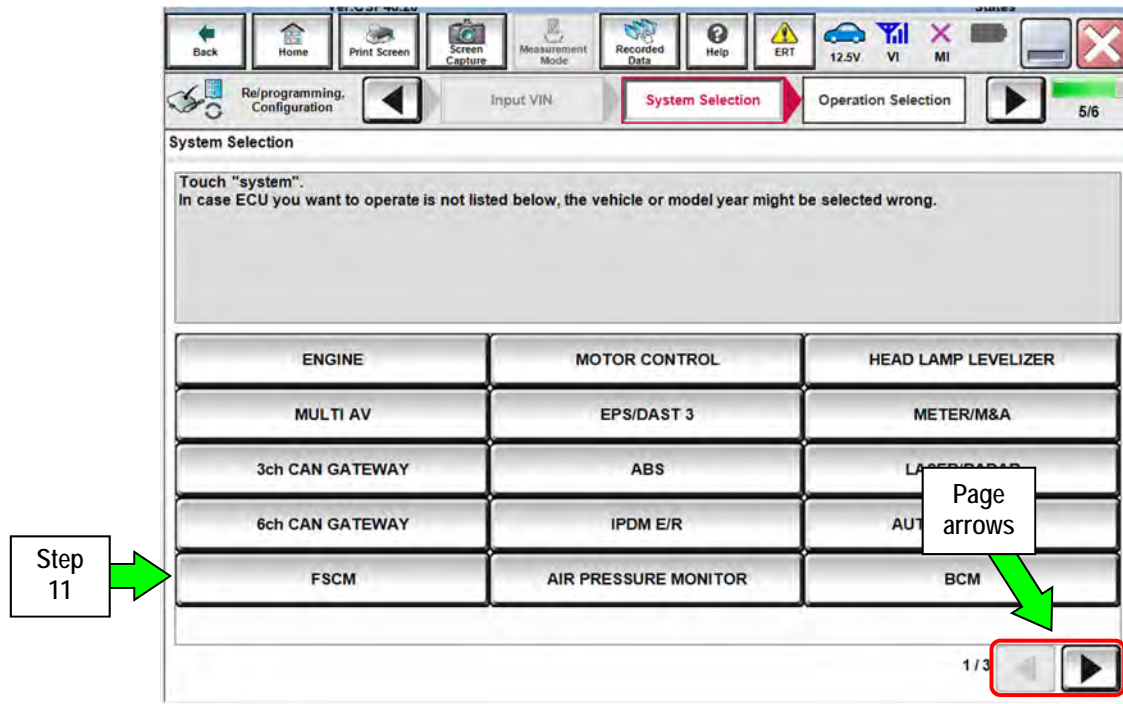


Figure 6

12. Select After ECU Replacement.

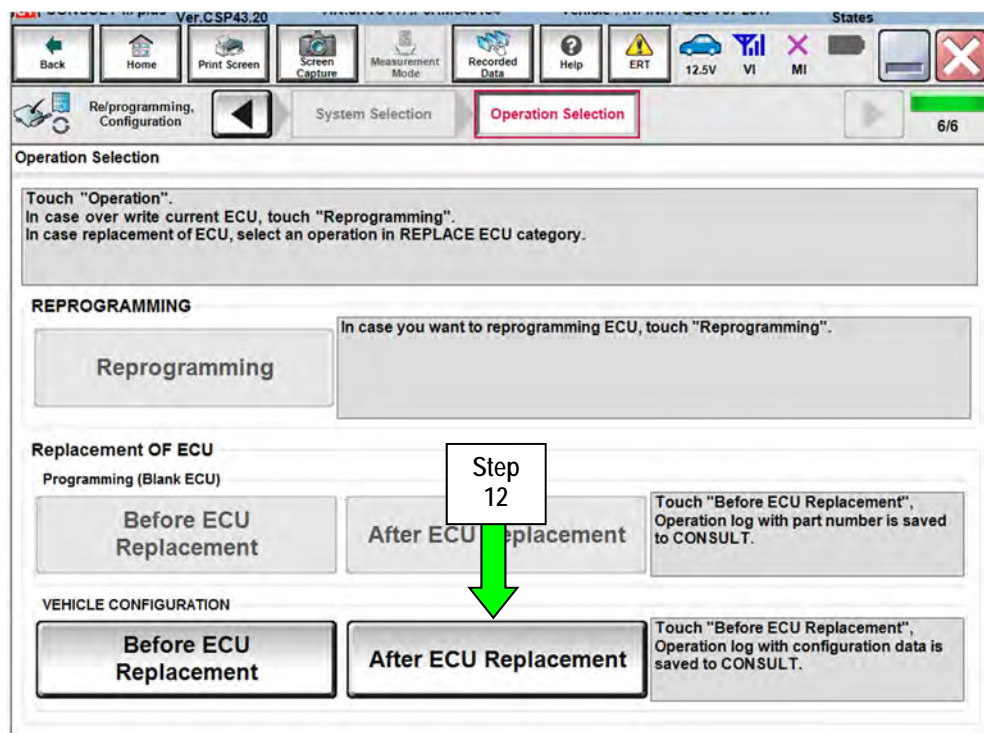


Figure 7

13. Select Manual Selection.

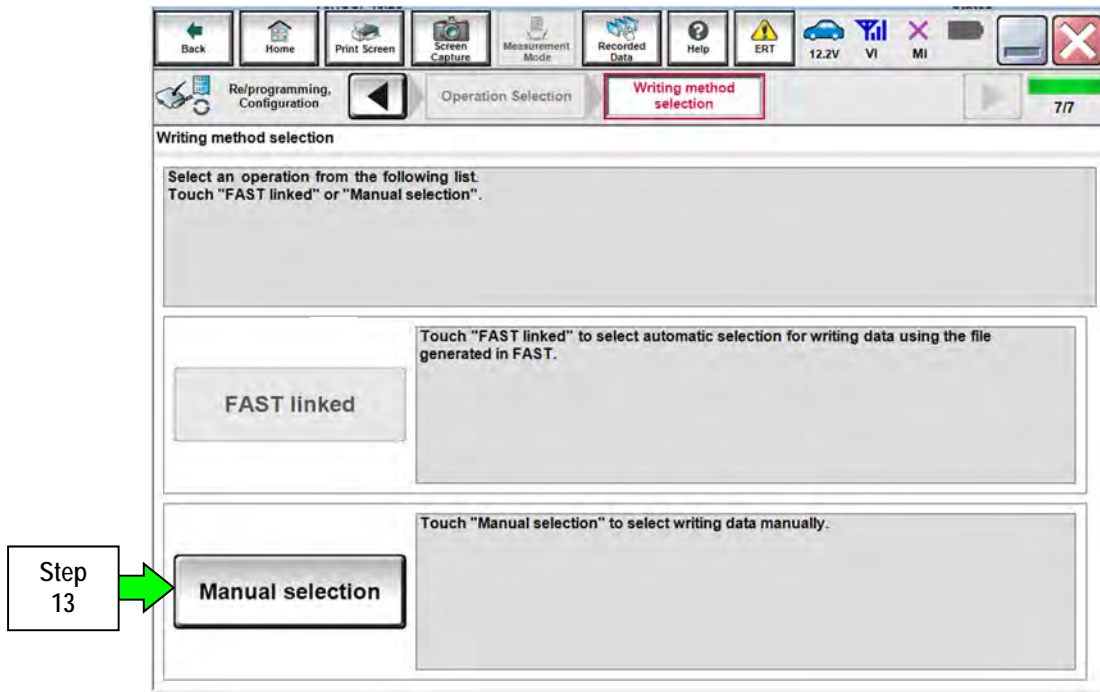


Figure 8

14. Select ENGINE TYPE – GASOLINE.

- Use the drop down arrow to view selections.

15. Select Next.

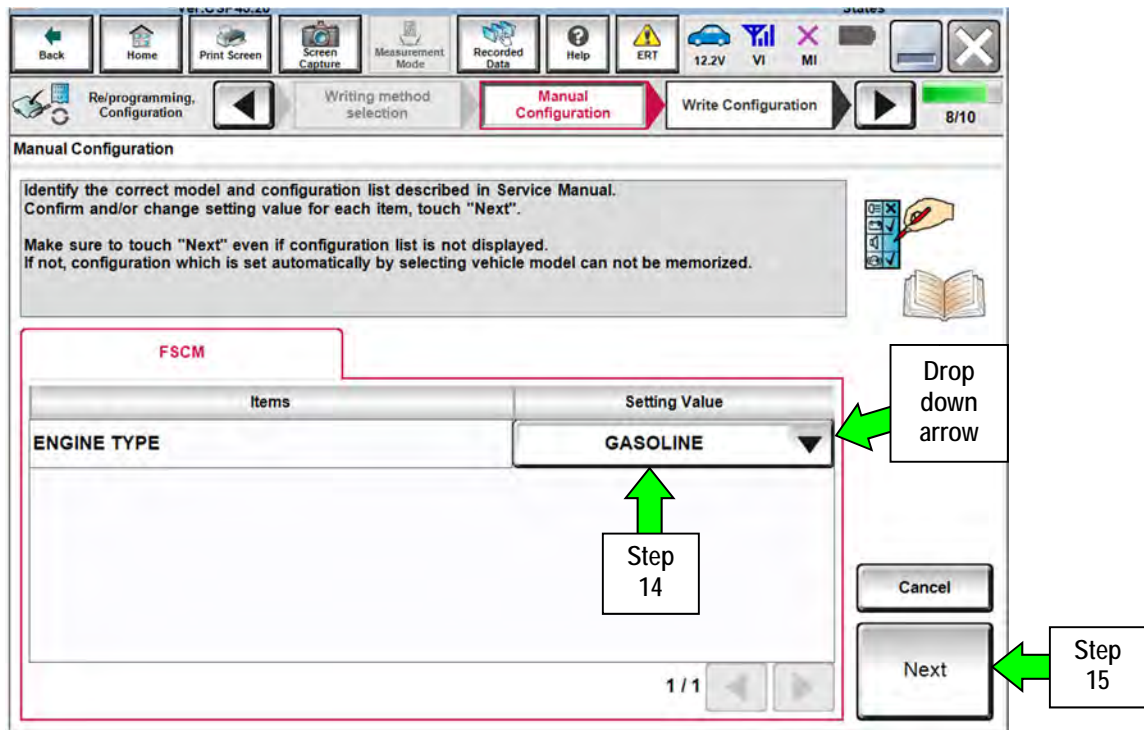


Figure 9

16. Select OK.

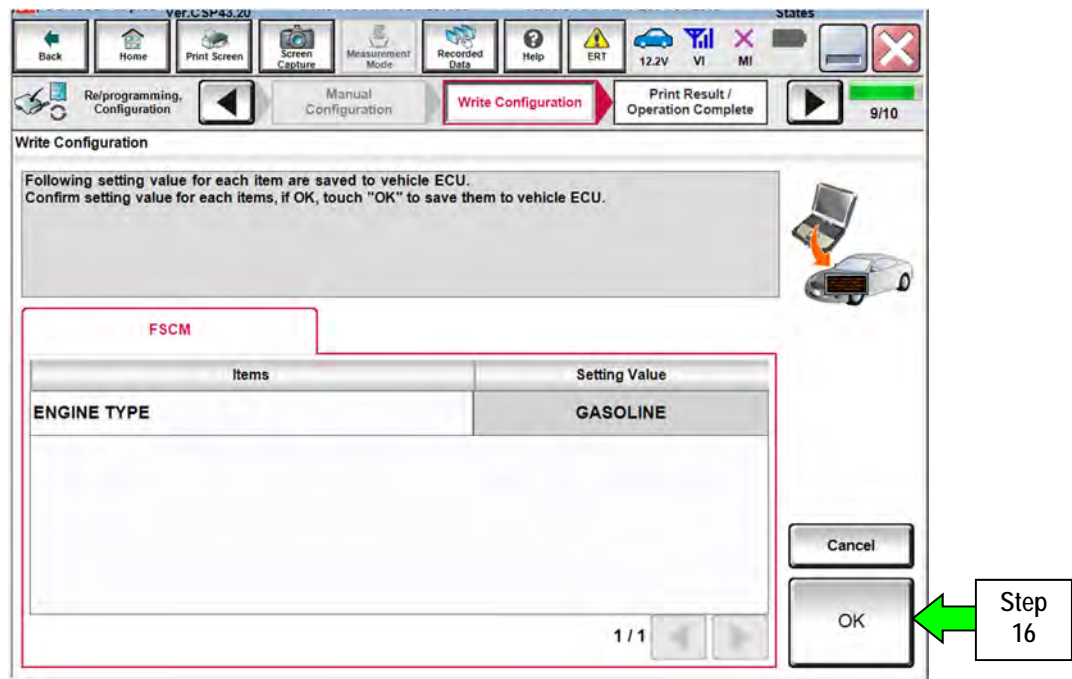


Figure 10

17. Wait for Transfer Data (Configuration) to complete.

- Configuration will take only a few seconds – a progress bar will display while data is transferring.

18. Select END.

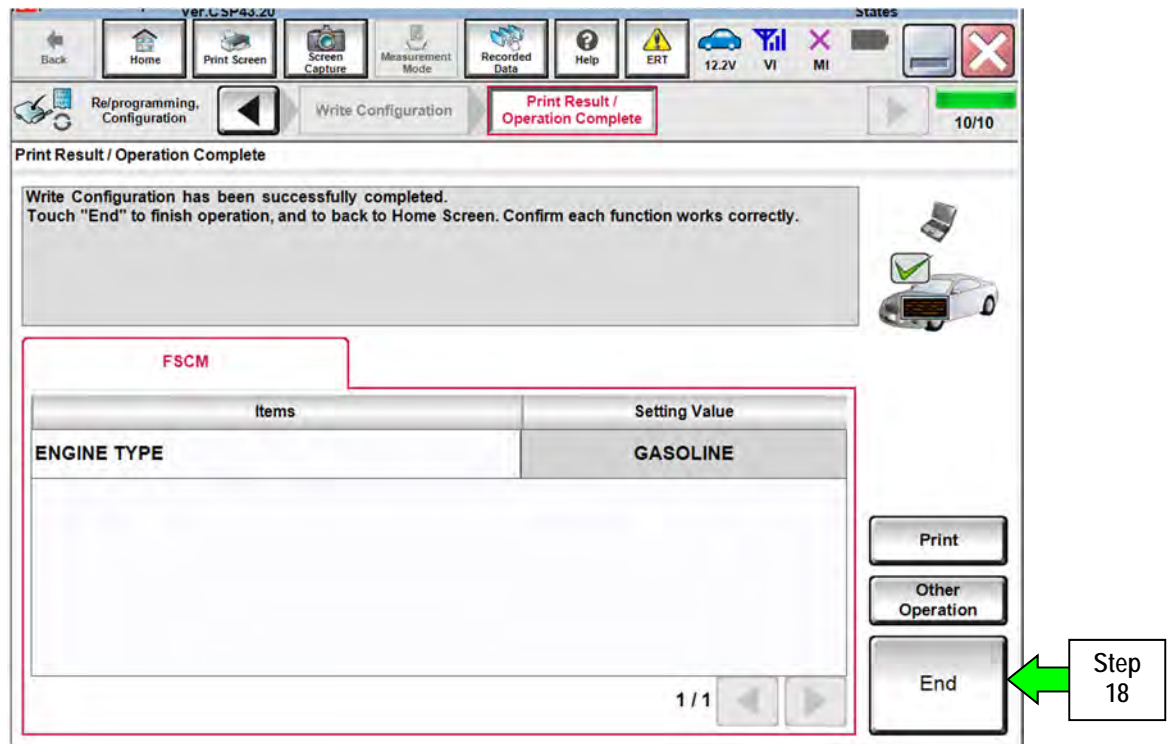


Figure 11

19. Start the engine and let it idle until its temperature is above 86°F (30°C).

20. Navigate C-III plus; Diagnosis (All Systems) > ENGINE > Data Monitor.

21. Under System, select FSCM.

- Use the lower left page arrows to find FSCM.

22. Select STATUS OF FUEL PUMP and FUEL PRESSURE.

23. Select START.

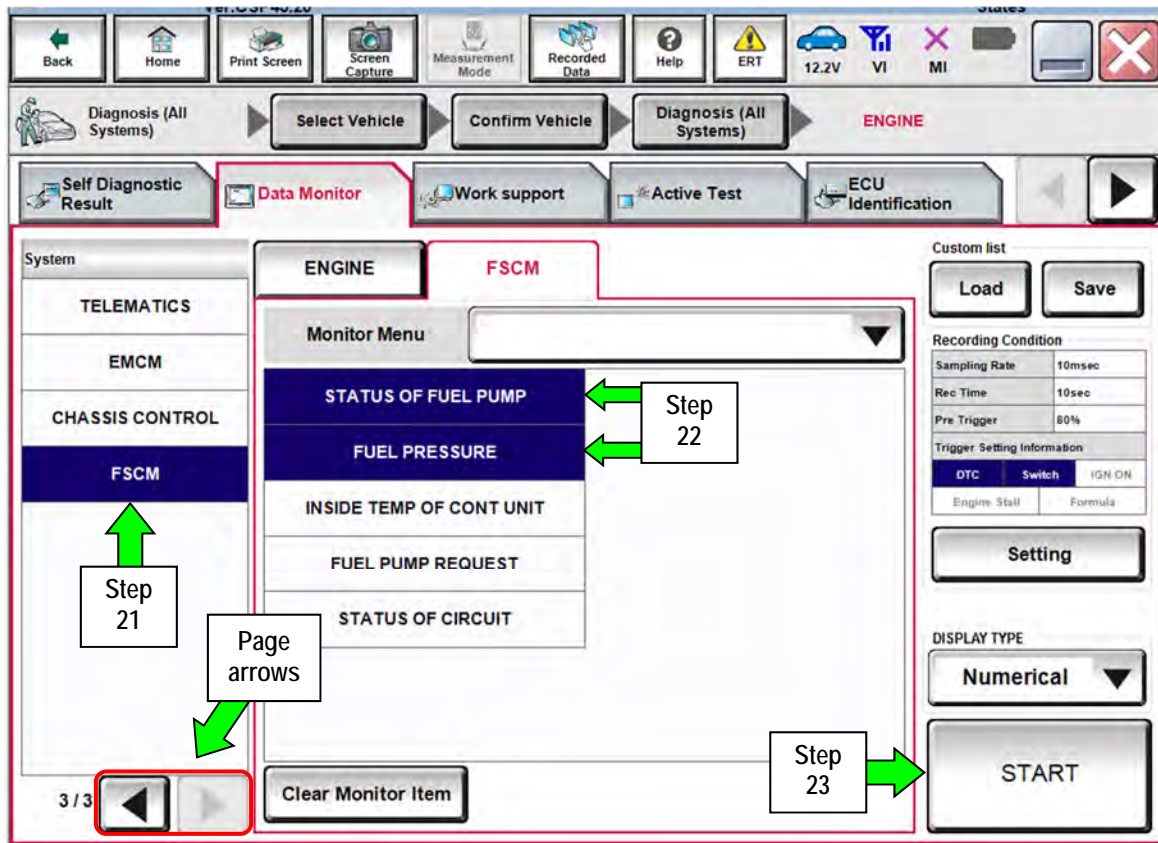


Figure 12

24. Confirm the following:

- STATUS OF FUEL PUMP is above 7.0 volts.
- FUEL PRESSURE is above 73 psi. (5.0 bar).

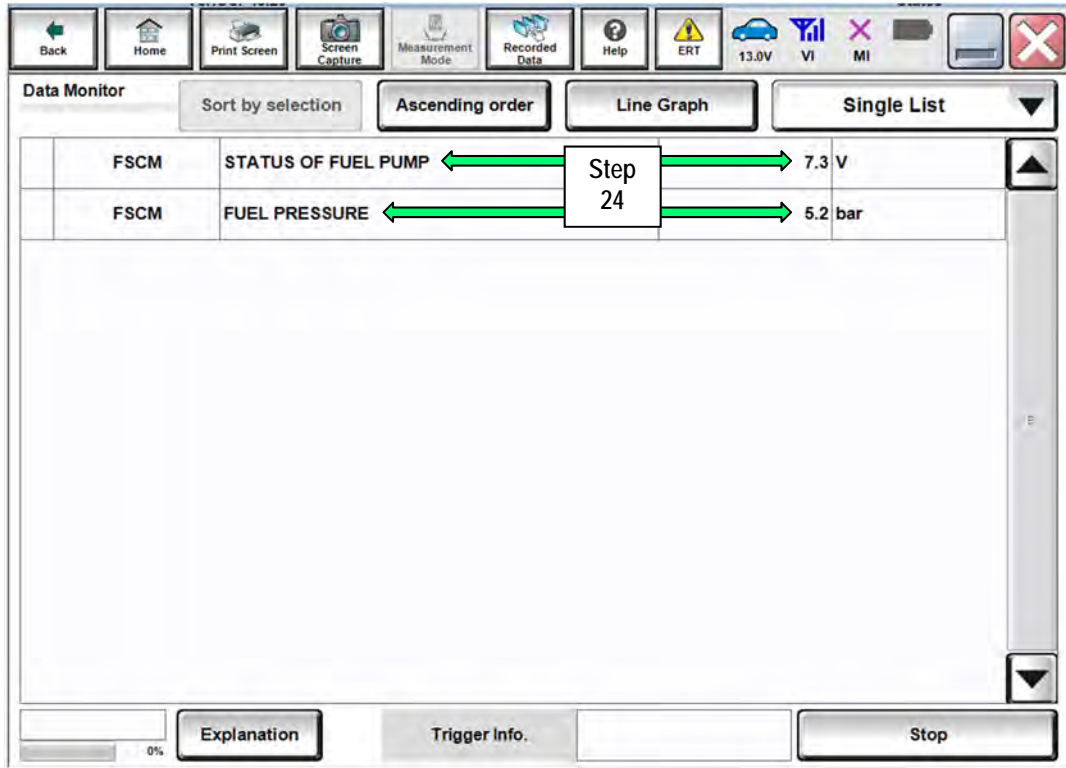


Figure 13

25. Erase any stored DTCs.

CLAIMS INFORMATION

Submit a "CM" line claim using the following claims coding:

CAMPAIGN ("CM") ID	DESCRIPTION	OP CODE	FRT
R1717	Reconfigure Fuel Pump Control Module	R17170	0.3

