

Date: July 06, 2017

SAFETY RECALL

Recall reference #: 17V-340

Product Models Affected:

EIDorado Amerivan 10" MY2008 - MY2017
Units built between October 2012 – May 2017.

Purpose:

This procedure provides the instructions necessary to complete the inspection, installation and weld of the Trailing arm mount required to correct the suspension issue outlined in NHTSA Safety Recall No. 17V-340.

Tool(s) / Equipment Required:

7" cut off wheel specs: 3" Diameter, Ceramic, Reinforced Cut off Wheel
3" X 1/32" X 3/8" cut off wheel grinder and Die
Heavy duty hammer
21mm and 6mm sockets / Ratchet and impact
Heavy duty pry bar
0.035 ER409NB-CU Weld wire
98-2% Argon Oxygen gas for stainless wire welds
Truck bed coating
Hybrid Adhesive Sealant 3M 760
Safety Glasses (PPE)
Rubber Gloves (PPE)

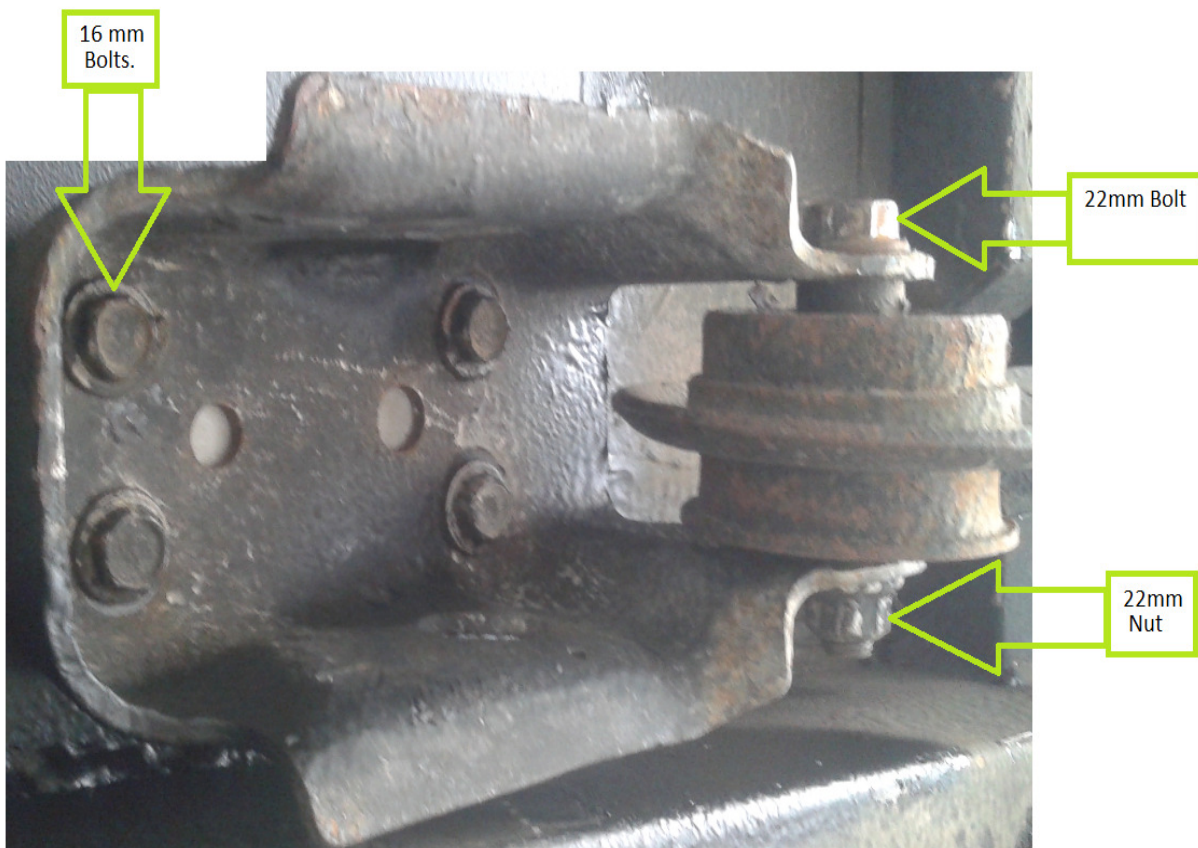
Part(s) / Material Required:

<u>Description</u>	<u>Part Number</u>	<u>Quantity</u>
TRAILING ARM BRACKET, AMVRT 10	0034762-001.30	2

Procedures:

Trailing Arm Bracket Installation

Step 1: Remove mounting bracket Bolts.



Step 2: Remove the bracket from the plate.



Step 3: Remove the trailing arm bracket plate



Step 4: Clean both surfaces of the mounting and plate by sanding.

BEFORE



BEFORE



AFTER

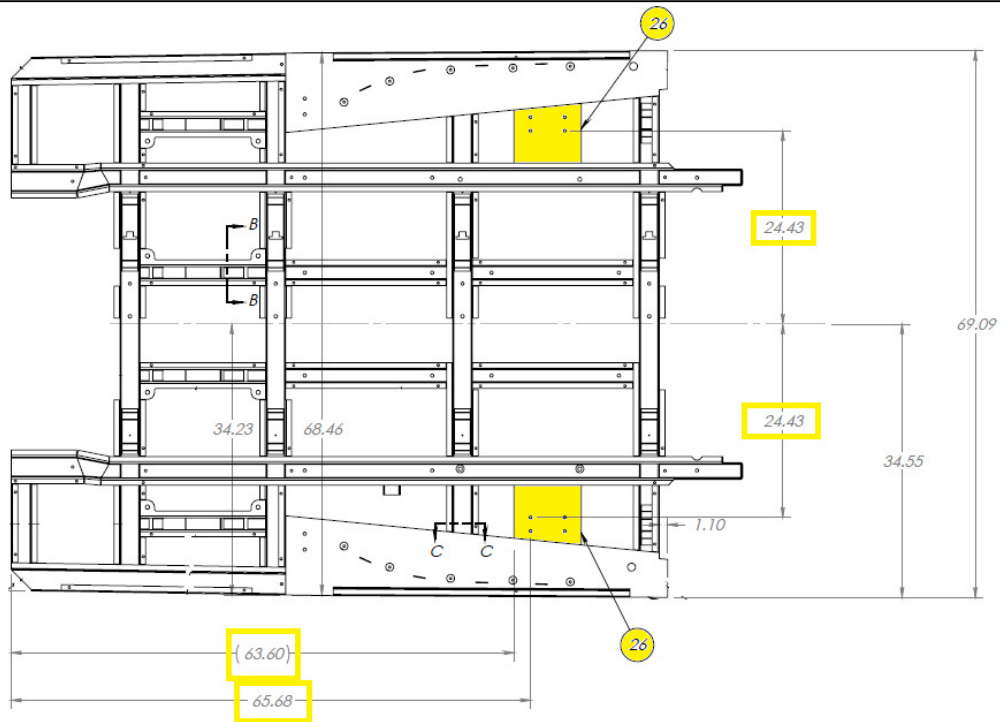
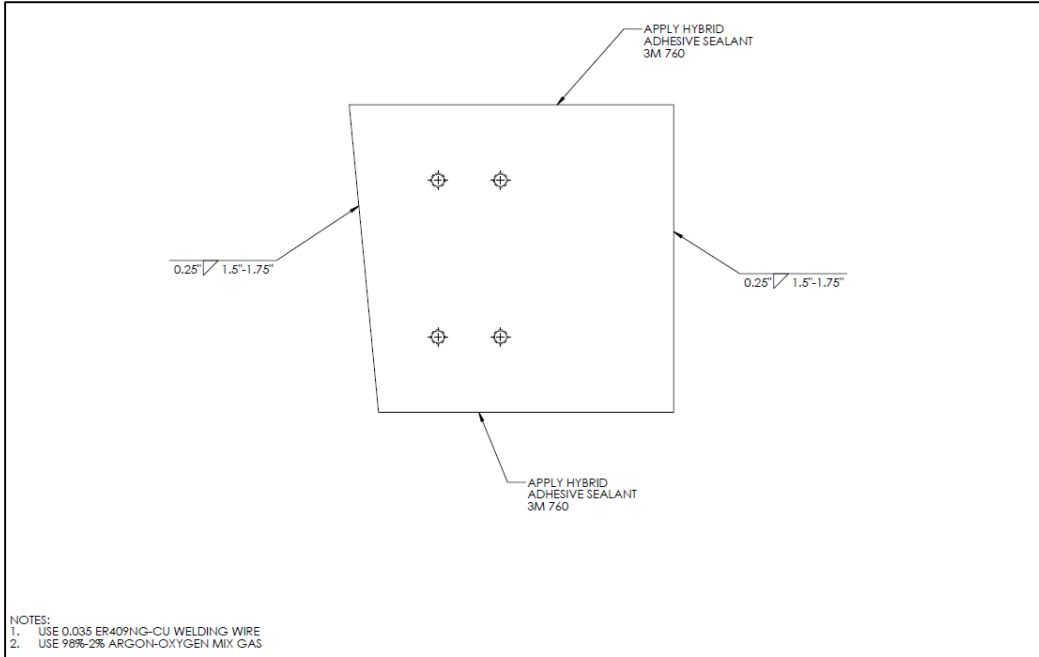


AFTER



Trailing Arm Bracket Installation

Step 5: Install the new Bracket plate and weld on only two sides for reworks.



BEFORE WELD



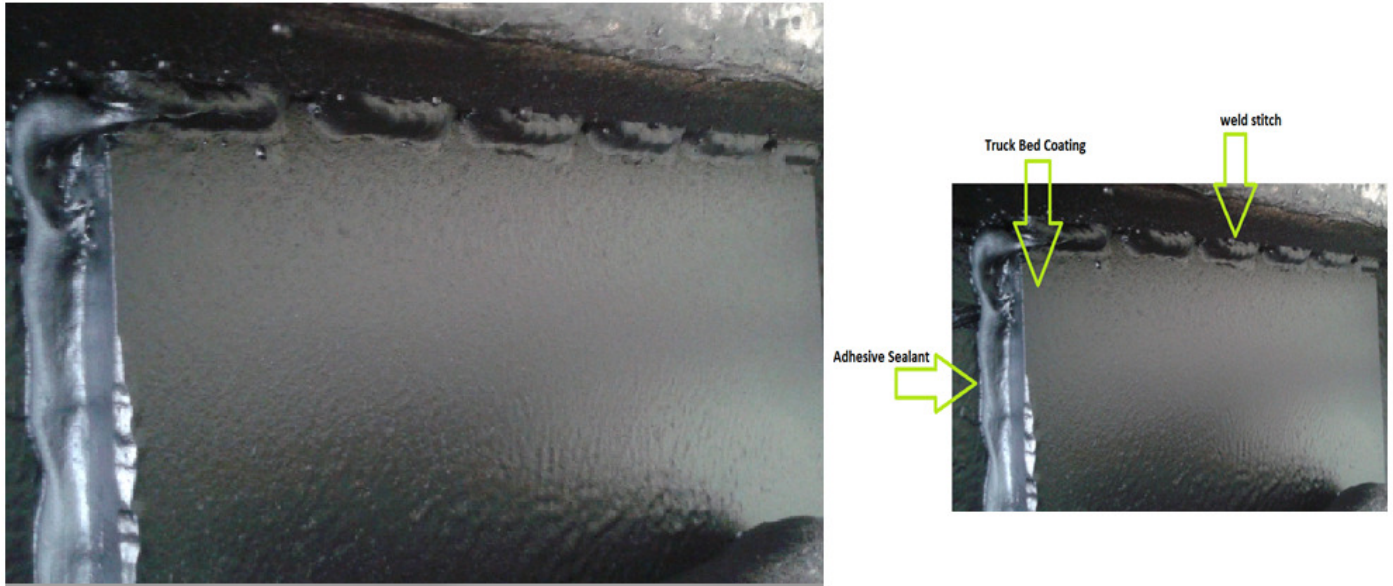
WELD EVERY 1.5" ON BOTH SIDES



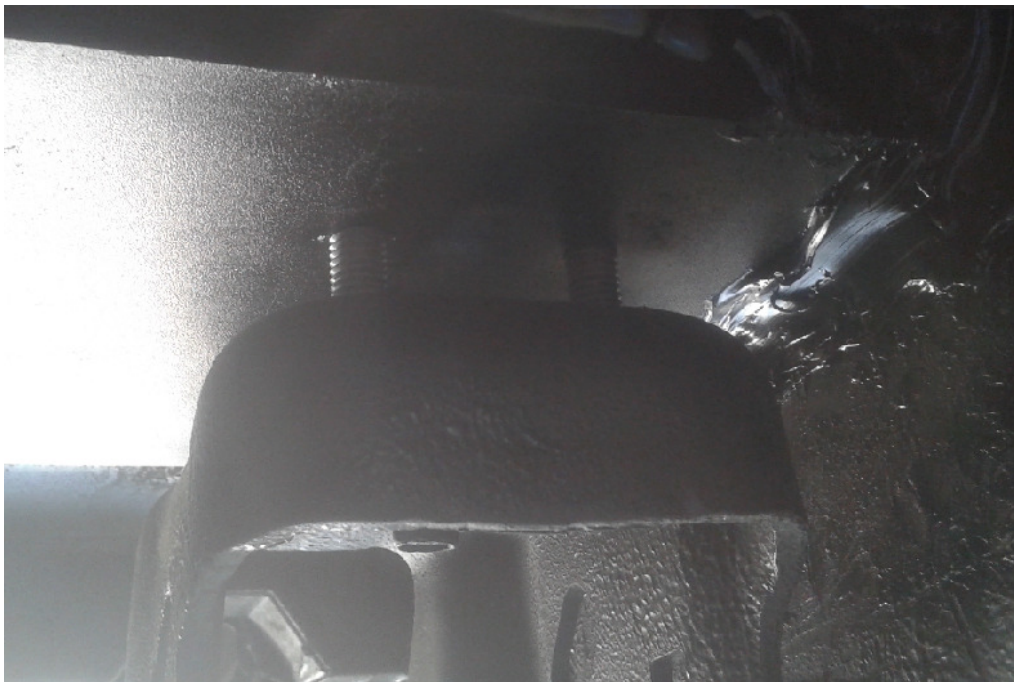
Step 6: Apply adhesive sealant all-round the plate including the welded stiches as shown below.



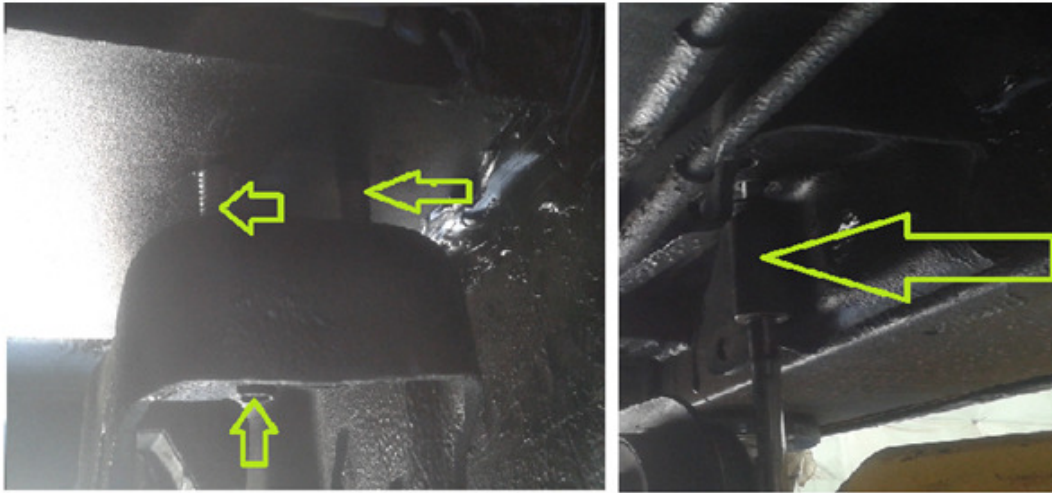
Step 7: Apply truck bed coating on the plate.



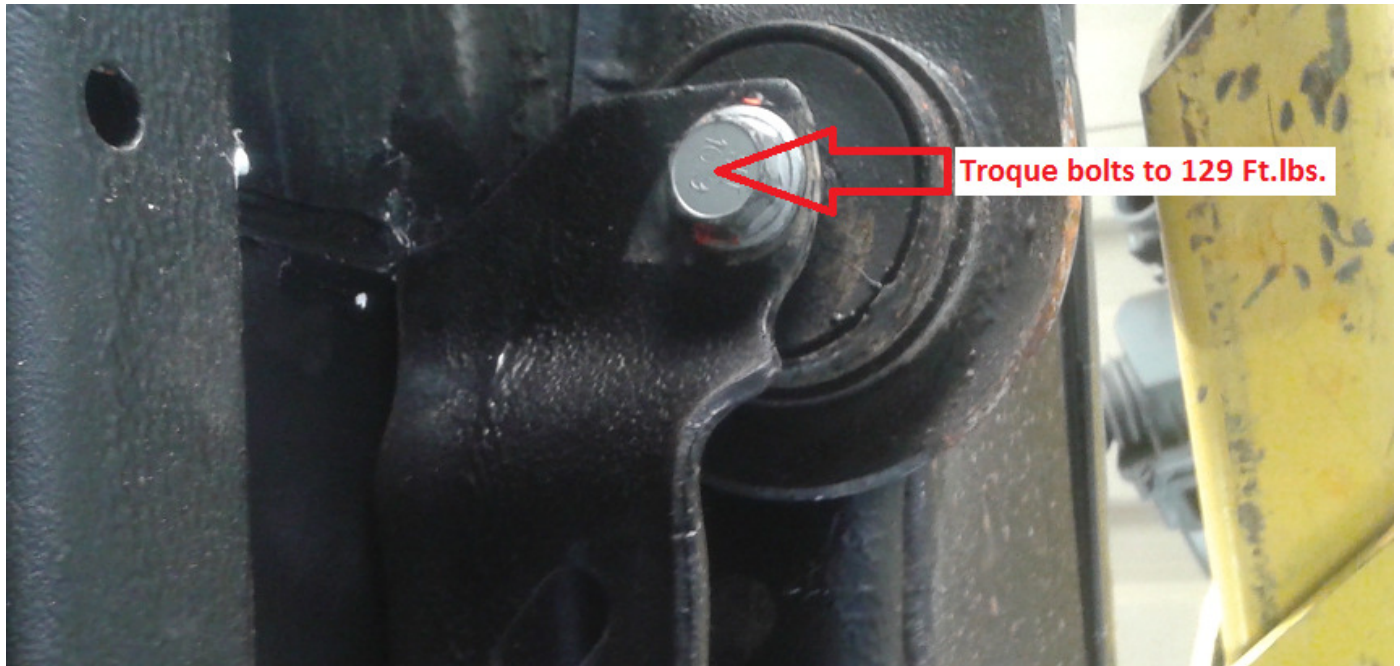
Step 8: Install the bracket onto the plate.



Step 9: Torque the 16 mm bolts to a 40 ft.lbs. (Specs: M10 X 1.5, 25mm Long, Grad 10.5)



Step 10: Torque the 21mm bolts to a 129 ft.lbs. (Specs: M14 X 1.5, 98mm Long, Grad 10.5)





Contact Information:

Contact your local Mobility Dealer from whom the vehicle was purchased. The Dealer will schedule a time to have your vehicle inspected and repaired. Should you have any questions after contacting your Dealer regarding the inspection and repair of the vehicle, do not hesitate to contact REV Customer Care at 844-473-8287.

The repair time estimate is 6 hours.