



# Replace Parking Brake Calipers

<b>Classification</b>	Recall Bulletin	<b>Section/Group</b>	33 - Brakes	<b>Country/Region</b>	All
<b>Year</b>	2012-2017	<b>Model</b>	Model S, Model X	<b>Version</b>	All

This Service Document supersedes SB-17-33-002 R1, dated 29-Jun-17. Each content change is marked by a vertical line in the left margin. Discard the previous version and replace it with this one.

**Bulletin Classification:** This Recall bulletin must be applied to all vehicles listed below. Recall Bulletins are mandatory service procedures that must be carried out by Tesla-certified Service Centers only. Work must be logged and tracked by Tesla Service. Any work carried out by uncertified technicians on this issue may not be appropriately performed or recorded and could lead to an unsafe condition and/or void warranty provisions.

## Condition

A gear inside the parking brake caliper could break while the parking brake is being applied. If this occurs, the parking brake motor will be unable to move the brake pad and the affected parking brake will be unable to be released or further applied.

## Correction

Replace the LH and RH parking brake calipers.

Correction Description	Correction	Time (Model S)	Time (Model X)
Replace LH and RH Parking Brake Calipers - Gear Recall	S011733002	0.80	0.65

Required Part(s):	Part Number	Description	Quantity
	1021251-S0-A	PARKING BRAKE CALIPERS AND PADS KIT	1

**Shop supplies:**  
 Silaramic lubricant (1063021-00-A)

These part numbers were current at the time of publication. Use the revisions listed or later, unless otherwise specified in the Parts Manual.

## Procedure

1. Remove the LH and RH parking brake calipers (refer to Service Manual procedure 33052002).
2. Record the serial numbers of the old calipers through the Material Resource Board (MRB) process (Figure 1).

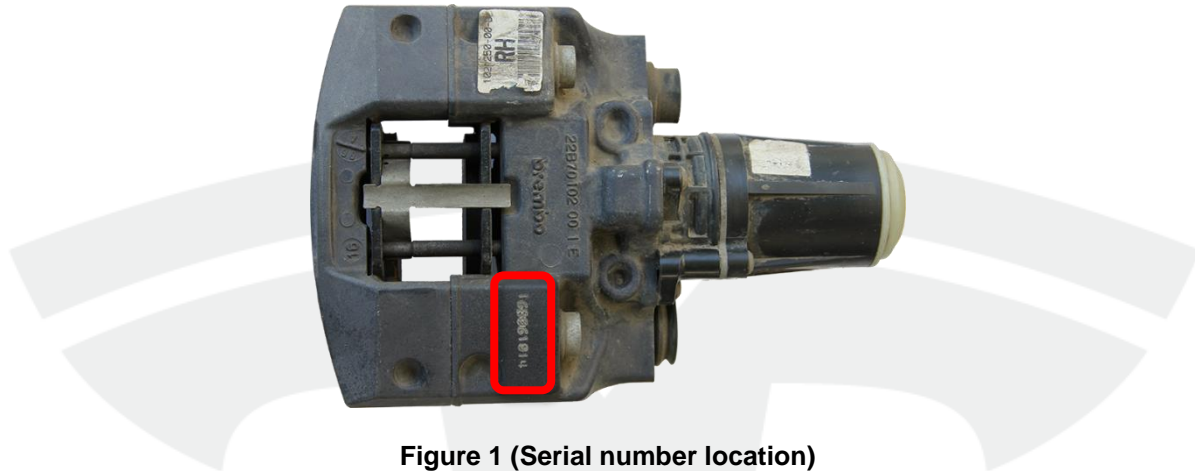


Figure 1 (Serial number location)

3. Record the serial numbers of the new calipers in Warp Service on the Repair Order.
4. Dispose of the old calipers:
  - If the customer stated that the touchscreen displayed a parking brake error message or the vehicle exhibited other symptoms of a parking brake fault, follow the normal MRB process.
  - If there are no parking brake faults, use pliers to crush or otherwise destroy the electrical connectors on the old LH and RH calipers to prevent them from being reused, and then discard the calipers.

**NOTE:** Do not return the destroyed calipers through the MRB process.

5. Install the new LH and RH parking brake calipers (refer to Service Manual procedure 33052002).

**NOTE:** Do not destroy parking brake calipers that are not affected by this bulletin. Follow the normal MRB process for parking brake calipers that are not affected by this bulletin.

---

**Affected VIN(s)** Affected Model S and Model X vehicles that had parking brakes installed in the factory between approximately February 23, 2016 and October 10, 2016.

Affected Model S and Model X vehicles that had parking brakes replaced in service between approximately February 22, 2016 and April 25, 2017.

**NOTE:** This is a simplified summary of the affected VIN list. Refer to the VIN/Bulletin Tracker or Customer/Vehicle profile to determine applicability of this bulletin for a particular vehicle.

For feedback on the accuracy of this document, email [ServiceBulletinFeedback@tesla.com](mailto:ServiceBulletinFeedback@tesla.com).