

May 18, 2017

06565 Version 2

Safety Recall: 2017 RDX Certification Label

Supersedes 17-021, *Noncompliance Recall: 2017 RDX Certification Label*, dated April 19, 2017 to revise the information highlighted in **yellow**

AFFECTED VEHICLES

Year	Model	Trim	VIN Range
2017	RDX	ALL	Check the iN VIN status for eligibility.

REVISION SUMMARY

The title and all references within this bulletin were changed from Noncompliance Recall to Safety Recall.

BACKGROUND

On certain 2017 RDX vehicles built between April 3rd thru April 11th 2017, the ink on the certification label may rub off when wiping the label with alcohol, gasoline, kerosene, engine oil, window cleaner, or wax. **If the label information can be wiped away, the operator may not be able to refer to the information, possibly resulting in the vehicle being overloaded, which can increase the risk of a crash.**

CUSTOMER NOTIFICATION

Owners of affected vehicles will be sent a notification of this campaign.

Do an iN VIN status inquiry to make sure the vehicle is shown as eligible.

Some vehicles affected by this campaign may be in your new or used vehicle inventory. These vehicles must be repaired before they are sold.

Failure to repair a vehicle subject to a recall or campaign may subject your dealership to claims or lawsuits from the client or anyone else harmed as a result of such failure. To see if a vehicle in inventory is affected by this safety recall, do a VIN status inquiry before selling it.

CORRECTIVE ACTION

Replace the certification label.

PARTS INFORMATION

Your service manager was sent the replacement certification label to update all affected vehicles in your assigned vehicle inventory.

WARRANTY CLAIM INFORMATION

Operation Number	Description	Flat Rate Time	Defect Code	Symptom Code	Template ID	Failed Part Number
8150A2	Remove and replace the certification label	0.2 hr	6AD00	KF400	17-021N	42762-TX4-A02

CLIENT INFORMATION: The information in this bulletin is intended for use only by skilled technicians who have the proper tools, equipment, and training to correctly and safely maintain your vehicle. These procedures should not be attempted by "do-it-yourselfers," and you should not assume this bulletin applies to your vehicle, or that your vehicle has the condition described. To determine whether this information applies, contact an authorized Acura automobile dealer.

REPAIR PROCEDURE

Label Information

Replacement labels have been shipped to your service manager directly from the factory. Once received, the labels should be reviewed against your vehicle inventory or against the vehicles assigned to arrive soon.

If a new label is lost or damaged, the DPSM must be notified immediately for support of a reprint from the factory. Any new damaged or new unused labels must be returned to the DPSM.

1. Open the driver's door, and locate the certification label.



2. Confirm the VIN on the dashboard matches the VIN on the new certification label. Also, make sure the VIN and manufacture date on the new label matches the old label.



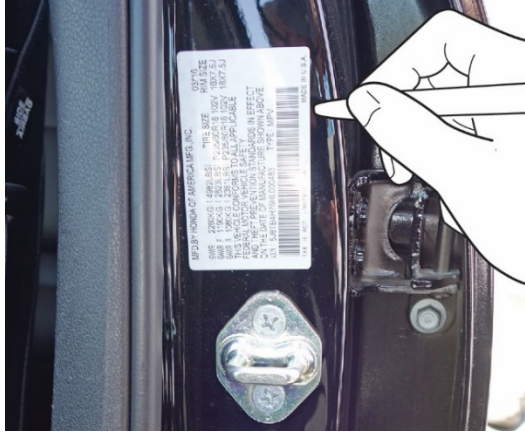
The certification label is located on the driver's side doorjam above the striker.



Confirm that the VIN and the Manufacture Date match those on the replacement label.

3. Use a plastic tool to remove the label. Be careful not to scratch or damage the paint.

NOTE: Applying heat with a heat gun may make the label easier to remove.



4. After the label is removed, using isopropyl alcohol on a lint free cloth, thoroughly clean the area where the new label will be attached. Make sure there is no residue from the old label, and allow the alcohol to dry.



5. Apply the new certification label 10mm above the striker. Make sure the label is applied in the same orientation as the removed label.

NOTE: Make sure the label is properly applied to the body, and make sure there are no wrinkles, tears, or bubbles on the new label.



Mount the new label
10 mm above the striker.

6. As a secondary confirmation, have another person confirm the VIN on the new certification label with the VIN on the dashboard.

END