

March 31, 2017

06124 Version 1

Safety and Emissions Recall: 2016 Pilot Fuel Tank

AFFECTED VEHICLES

Year	Model	Trim	VIN Range
2016	Pilot	ALL	Check the iN VIN status for eligibility

BACKGROUND

Some plastic fuel tanks may have been manufactured with incorrect material, which can cause separation within the fuel tank walls allowing for fuel leakage. Customers may notice a fuel smell or a leak. A fuel leak in the presence of an ignition source could result in a fire.

There is a similar safety recall, 16-051, *Safety Recall: 2015–16 Odyssey and 2016 Pilot Fuel Tank*, but each bulletin has unique VIN populations. Make sure you follow the correct bulletin for the vehicle you are working on.

CUSTOMER NOTIFICATION

Owners of affected vehicles will be sent a notification of this campaign.

Do an iN VIN status inquiry to make sure the vehicle is shown as eligible.

Some vehicles affected by this campaign may be in your new or used vehicle inventory.

Failure to repair a vehicle subject to a recall or campaign may subject your dealership to claims or lawsuits from the customer or anyone else harmed as a result of such failure. Furthermore, state law may provide American Honda with the right to seek indemnification in any such claim or lawsuit. To see if a vehicle in inventory is affected by this recall, do a VIN status inquiry before selling it.

CORRECTIVE ACTION

Replace the fuel tank.

PARTS INFORMATION

Part Name	Order Part Number	Quantity
Fuel Tank Set (Includes green and natural retainer, fuel lock nut and gasket set, fuel tube clips, and fuel tank)	17044-TG7-A00	1
Pre-Chamber Gasket	18393-SDB-A00	1
Bolt (12-point, 8 x 29 mm) (Pilot AWD only)	90113-S10-000	8
Nut (10 mm)	90212-SA5-003	3
Flange Bolt (10 x 29 mm) (Pilot AWD only)	90382-SH9-003	2

NOTE: For dealers experiencing a strong fuel smell from storing a fuel tank replaced under this Service Bulletin, the fuel tank may be disposed of immediately in accordance with local regulations. This only applies to the fuel tank replaced under this Service Bulletin. The published retention policy remains in effect for all other parts. If you have any questions to this exception or other parts retention issues please contact the WPI Administrative Office at 937-642-2737.

CUSTOMER INFORMATION: The information in this bulletin is intended for use only by skilled technicians who have the proper tools, equipment, and training to correctly and safely maintain your vehicle. These procedures should not be attempted by "do-it-yourselfers," and you should not assume this bulletin applies to your vehicle, or that your vehicle has the condition described. To determine whether this information applies, contact an authorized Honda automobile dealer.

SPECIAL TOOLS

Part Name	Order Part Number	Quantity
Fuel Nut Wrench	070AA-T0AA100	1

WARRANTY CLAIM INFORMATION

NOTE: Make sure to enter the fuel tank serial number in the DTC field of the warranty claim.

Operation Number	Description	Flat Rate Time	Defect Code	Symptom Code	Template ID	Failed Part Number
3101GA	Pilot 2WD: Replace the fuel tank.	2.5 hrs.	6HT00	KE800	17-021A	17044-TG7-A00
3101GA	Pilot AWD: Replace the fuel tank.	2.9 hrs	6HT00	KE800	17-021B	17044-TG7-A00

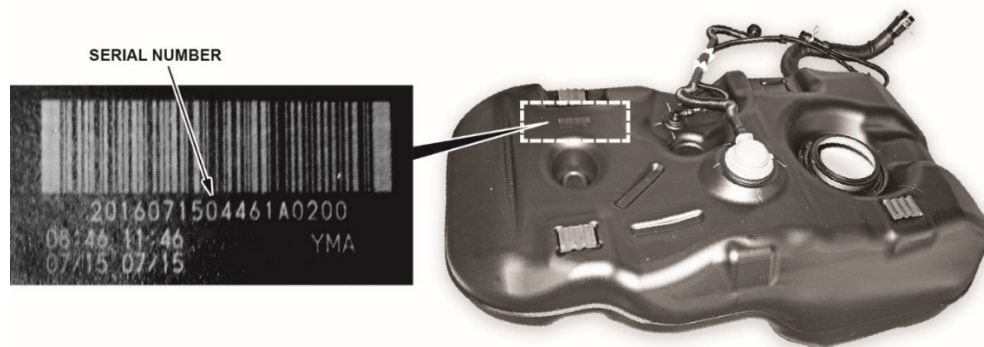
Skill Level: Repair Technician

REPAIR PROCEDURE

NOTE: Before disconnecting fuel lines or hoses, relieve pressure from the system by disabling the fuel pump and disconnecting the fuel line/quick connect fitting in the engine compartment.

1. Replace the fuel tank. Refer to service information.
2. Refill the fuel tank with the fuel that was drained from the original fuel tank.
3. Permanently damage the original fuel tank by using a pneumatic drill to make several holes in the tank to ensure it can't be reused.
4. Write the original fuel tank serial number on the RO, then give the warranty clerk the RO. For the warranty claim to be paid, the fuel tank serial number must be included in the DTC field of the warranty claim.

NOTE: Use the laser-etched serial number on the top of the tanks as shown. Do not use the paper one that is on the side of the tank.



5. **For California residents only:** Fill out a Vehicle Emissions Recall – Proof of Correction certificate, and use KE8 as the recall number. Give the certificate to your customer, and advise them to keep it as proof that the recall was completed. Your customer will need to submit this certificate to the DMV only if the DMV requests it. If you need more certificates, use reorder number Y0657.

Vehicle Emission Recall - Proof of Correction					
License Number	Make	Year Model	Body Type	Vehicle Identification Number	
Manufacturer			Recall Number KE8		
The above described vehicle has been repaired, modified and/or equipped with emission control devices to meet applicable California Emission Control Laws.					
Dealer's Name			Address: City, State and Zip		
Date	Dealership's Authorized Signature				
	X				
Return this certificate to DMV only when required - otherwise retain for your records.					

END