

SAFETY RECALL

SR17-80

| | | | | |
|---------|------------|-------|-----|------|
| Date | Expiration | Group | No. | Page |
| 05.2017 | NONE | | | 1(4) |

I-START DUAL BATTERY SYSTEM - WRONG CONNECTION OF GROUND CABLES GND11 & GND11A 9700 US/CAN (B13R)

MODEL YEAR(S) AND VEHICLE SERIAL NUMBERS (VIN) INVOLVED

| NOTICE TO SERVICE CENTERS | |
|---|------------|
| <i>Verify vehicle eligibility by checking recall status with SAP or via ONLINE WARRANTY SYSTEM available on Service / Warranty tab of Prevest website.</i> | |
| Model | VIN |
| Volvo 9700 US/CAN Model Year: 2016 – 2017 Equipped with I-Start Dual Battery System | |
| This recall does not necessarily apply to all the above-mentioned vehicles, some vehicles may have been modified before delivery. The owners of the vehicles affected by this recall will be advised by a letter indicating the Vehicle Identification Number (VIN) of each vehicle concerned. | |

SAFETY RECALL

SR17-80

Date Expiration Group No. Page
05.2017 NONE 2(4)

DESCRIPTION

On the vehicles equipped with I-Start dual battery system, it is necessary to check if ground cables **GND11** & **GND11A** are connected to the proper ground connection point which is a weld nut on a structural member.

MATERIAL

Vehicles equipped with I-Start system only - Order kit "SR17-80" which contains the following part:

| Part No. | Description | Qty |
|----------|--------------------------|-----|
| 946440 | FLANGE SCREW, M8-1.25X16 | 1 |

PROCEDURE



DANGER

Park vehicle safely, apply parking brake, stop engine. In the battery box, set the battery cut-off switch to the OFF position prior to working on the vehicle.

- 1) Turn off the vehicle electrical system, by following these steps:
 - Remove ignition key;
 - Turn off battery switch;
 - Wait at least 30 seconds;
 - Disconnect **NEGATIVE** cable from vehicle battery.

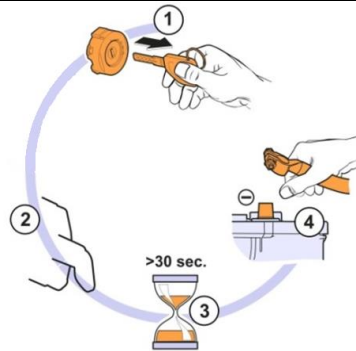


FIGURE 1

- 2) Locate the ground connection point above the engine air filter (FIGURE 2).



FIGURE 2

- 3) Make sure that both ground cables (GND11 & GND11A) are connected together on the proper ground connection point (FIGURE 3). If not, perform steps 4 & 5.

WELD NUT DESCRIPTION: part number #1136923 M8x18mm.



FIGURE 3: WRONG CONNECTION OF GROUND CABLES

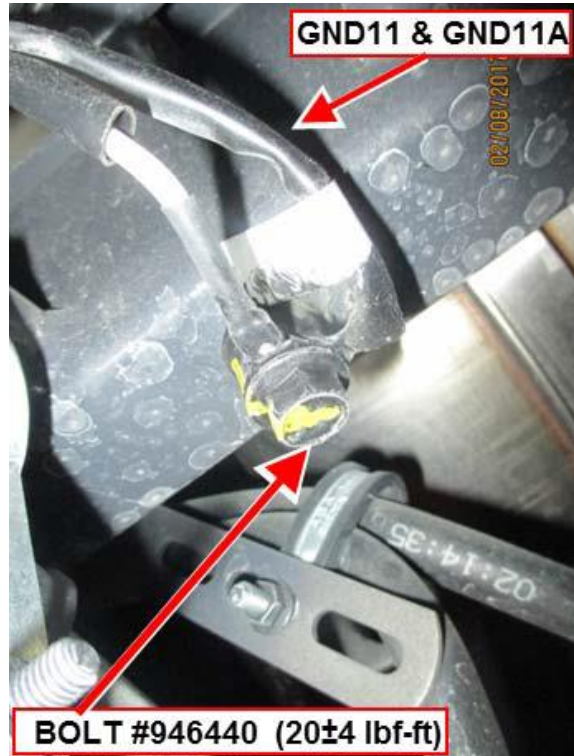


FIGURE 4: PROPER CONNECTION OF GROUND CABLES

- 4) Thoroughly clean the weld nut and the cable ring terminals to ensure good electrical conductivity.
- 5) Fasten the ground cable terminals to the connection point using flange screw #946440, torque 20 ± 4 lbf-ft (28 ± 5 N-m) (FIGURE 4).

- 6) Turn on the vehicle electrical system. Follow these steps:

- Connect NEGATIVE cable to the vehicle battery;
- Turn on battery switch;
- Insert vehicle key.

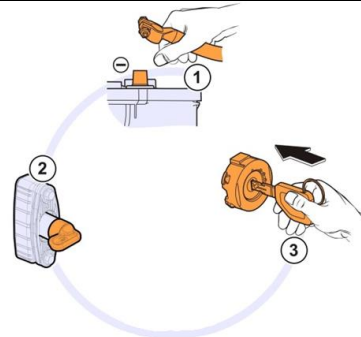


FIGURE 5

| Date | Expiration | Group | No. | Page |
|---------|------------|-------|-----|------|
| 05.2017 | NONE | | | 4(4) |

PARTS / WASTE DISPOSAL

Discard waste according to applicable environmental regulations (Municipal/State[Prov.]/ Federal)

WARRANTY

This modification is covered by Prevost's normal warranty. We will reimburse you the parts and **1/2 hour (0.5)** of labor upon receipt of the parts and a completed A.F.A. Please submit claim via our Online Warranty System, available at www.prevostcar.com (under Service \ Warranty section). Use Claim Type: "Bulletin/Recall" and select "Safety Recall SR17-80".

OTHER

| | |
|--------------|---------|
| VBC Bulletin | -- |
| Fail Code | 06-15 |
| Defect Code | 09 |
| Syst.Cond. | R |
| Causal Part | 1136923 |

Access all our Service Bulletins on <http://prevostparts.volvo.com/technicalpublications/en/pub.asp> or scan the QR-Code with your smart phone.

E-mail us at technicalpublications_prev@volvo.com and type "ADD" in the subject to receive our warranty bulletins by e-mail.



Prevost engages in a continuous program of testing and evaluating to provide the best possible product. Volvo Bus, however, is not committed to, or liable for updating existing products.