



Technical Service Bulletin

GROUP RECALL	NUMBER 17-01-025-1
DATE OCTOBER, 2017	MODEL(S) Sonata (YF) Sonata Hybrid (YF HEV)

SUBJECT: 2011-2014 SONATA (YF) AND 2011-2015 SONATA HYBRID (YF HEV)
ANCHOR PRETENSIONER INSPECTION & LABEL INSTALLATION
(RECALL CAMPAIGN 160)

This TSB supersedes TSB# 17-01-025 and modifies the Service Procedure and Labor Operation.

★ IMPORTANT

*** Retail Vehicles ***

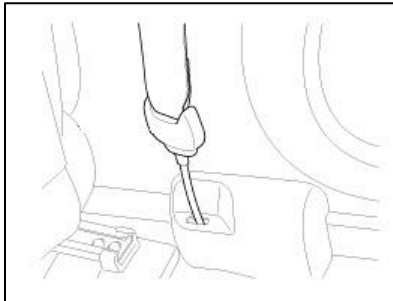
Dealers must perform this Recall Campaign whenever an affected vehicle is in the shop for any maintenance or repair.

When a vehicle arrives at the service department, access Hyundai Motor America's "Warranty Vehicle Information" screen via WEBDCS to identify open Campaigns.

Description:

The front seat belt assembly incorporates a seat belt anchor pretensioner fastened to the vehicle's inner sill structure. During vehicle assembly, the anchor pretensioner is fastened to the sill prior to being connected to the seat belt linkage. If, during vehicle assembly, the connector did not fully latch when the linkage was pressed onto the connector, the seat belt can detach from the anchor pretensioner. If the seat belt linkage detaches from the anchor pretensioner in a collision, the risk of injury to the occupant is increased.

This bulletin describes the procedure to inspect the driver's and passenger's anchor pretensioner assemblies to confirm they are properly latched and install warning labels to prevent potential improper reattachment of the anchor pretensioners.



NOTICE

Please note this is a simple procedure that can be performed in the dealer's service drive in less than 5 minutes.


Applicable Vehicles:

2011-2014 MY Sonata (YF) vehicles

2011-2015 MY Sonata Hybrid (YF HEV) vehicles

Circulate To: General Manager, Service Manager, Parts Manager, Warranty Manager, Service Advisors, Technicians, Body Shop Manager, Fleet Repair

Parts Information:

Part Name	Part Image	Part Number		Remarks
		Previous	New	
Warning Label, Anchor Pre-Tensioner		N/A	201141882R	1000 labels per roll (2 labels needed per vehicle)

Note: Each dealer will be provided one roll of 1000 labels.

Warranty Information:

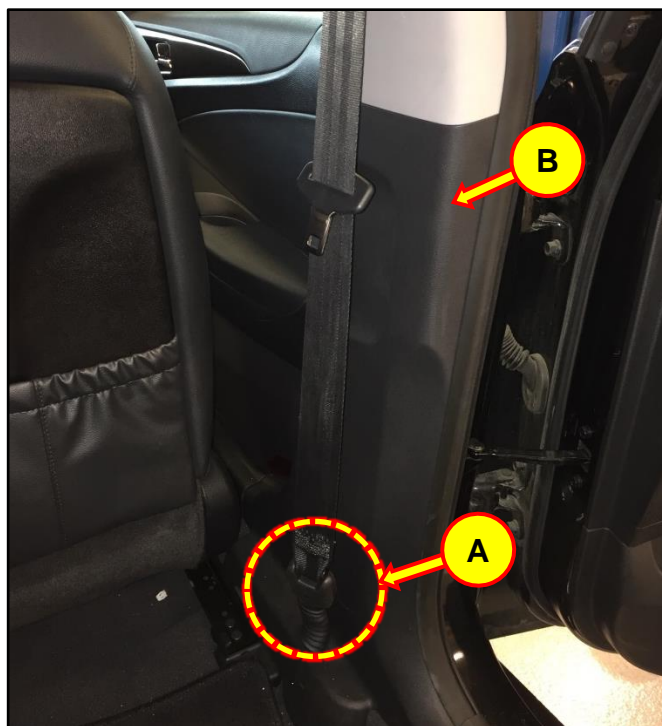
Model	Op Code	Operation	Op Time	Causal Part No.	Nature Code	Causal Code
Sonata (YF) Sonata Hybrid (YF HEV)	71CA10R1	Anchor Pretensioner Inspection & Label Installation	0.2 M/H	88841-3Q000	B15	ZZ1

NOTE 1: Submit Claim on Campaign Claim Entry Screen

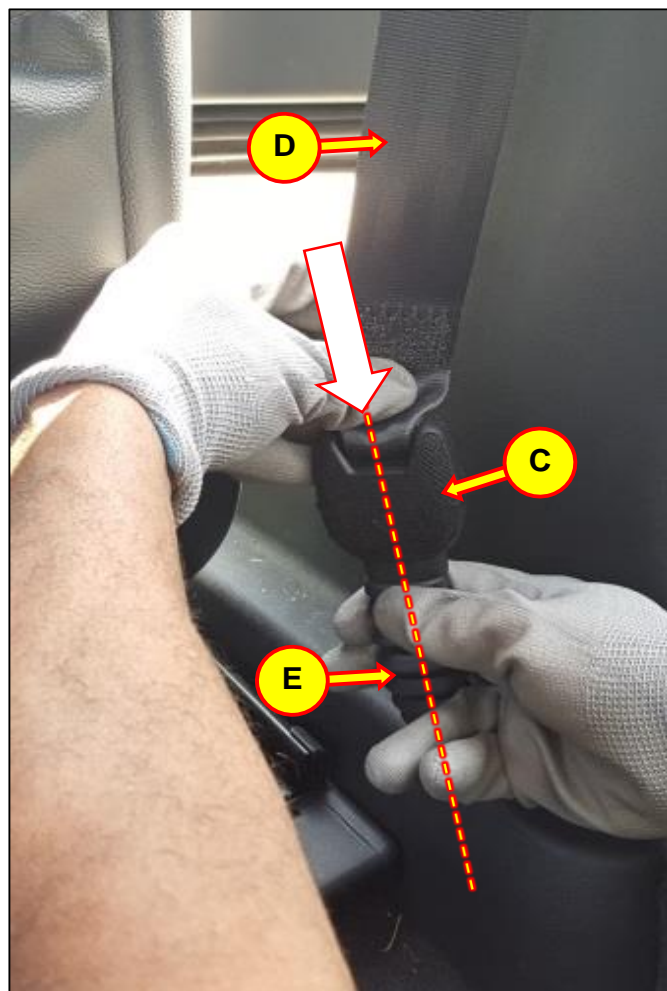
NOTE 2: If a part is found in need of replacement while performing Recall 160 and the affected part is still under warranty, please submit a separate claim using the same Repair Order. If the affected part is out of warranty, submit a Prior Approval Request for goodwill consideration prior to performing the work.

Service Procedure:

1. Move the passenger seat forward and locate the passenger anchor pretensioner (A) near the lower B pillar trim (B).



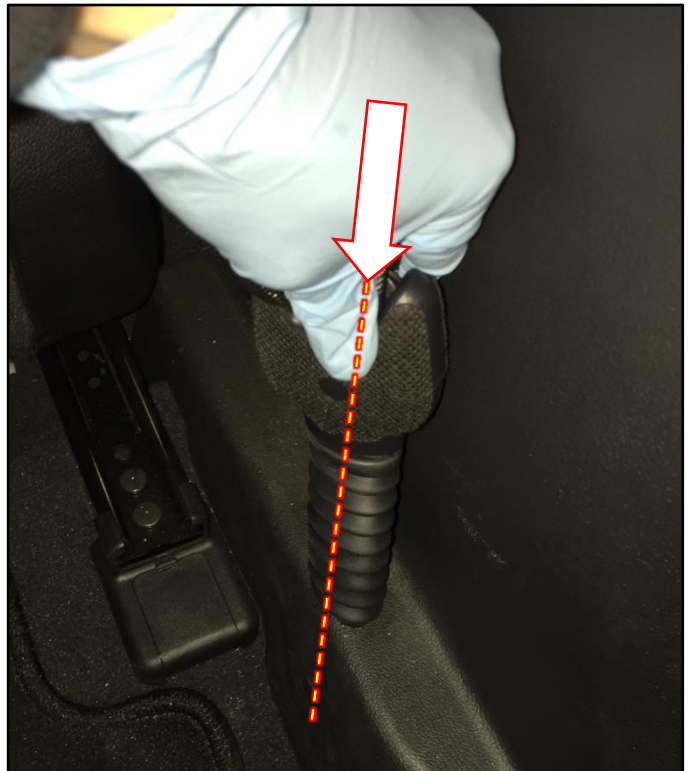
2. Push the linkage element (C) in the seat belt assembly (D) down along the anchor pretensioner cable (E), while firmly holding the anchor pretensioner cable (E).



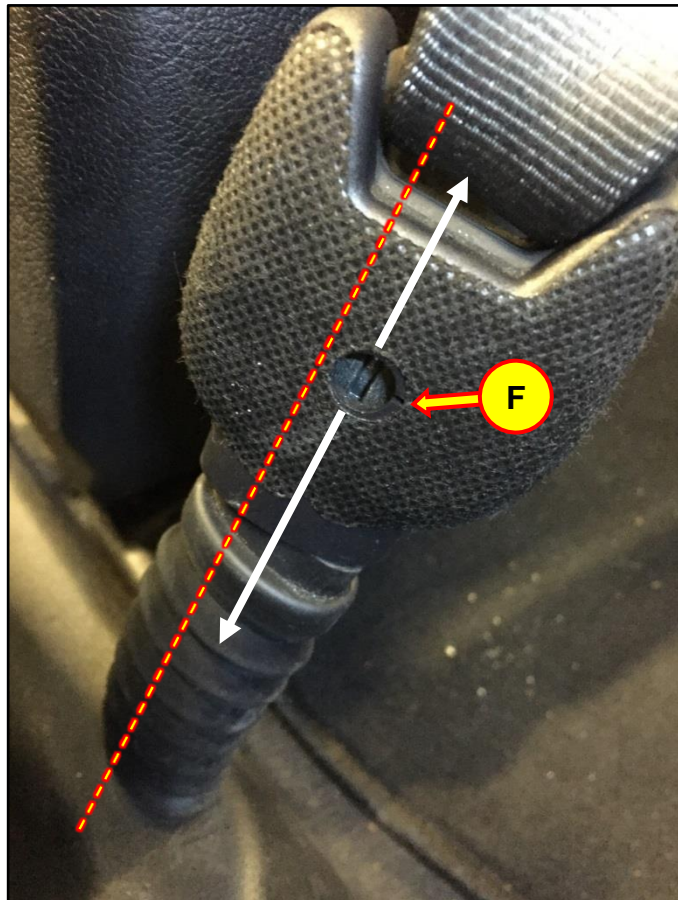
3. Pull the linkage element up in order to verify that it is fully locked.



4. Push the linkage element down again.



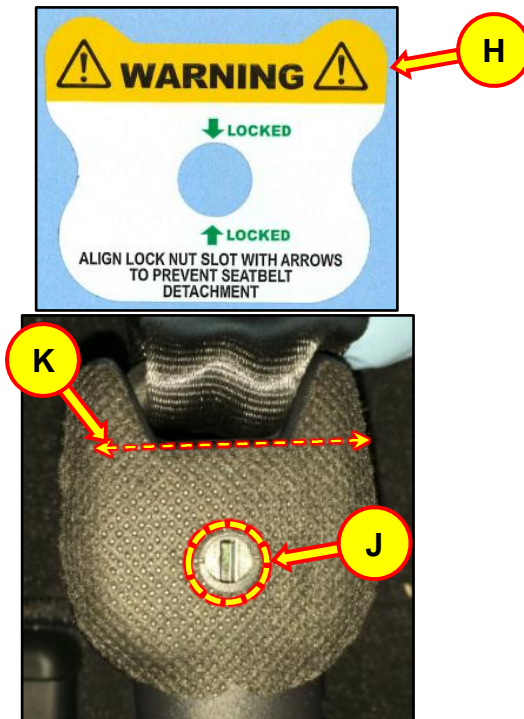
5. Visually inspect the center hole (F) on the outboard side of the linkage element to confirm that it is fully locked.
Note: When fully locked, the latch slot in the center hole is parallel to the anchor pretensioner cable.



6. Visually inspect the outboard surface of the linkage element (G) and make sure the surface is free from any debris.
Note: if necessary, wipe the surface with a clean dry cloth.



7. Peel off the label (H) and align it with the center hole (J) and top horizontal line (K) of the linkage element.



8. Firmly press down on the label to ensure it adheres to the surface of the linkage element.
Note: Green “LOCKED” arrows (L) should align with the latch slot.



9. Move the driver seat forward, locate the driver's anchor pretensioner, and repeat Steps 2 through 8.