



## INSTRUCTION TO SERVICE

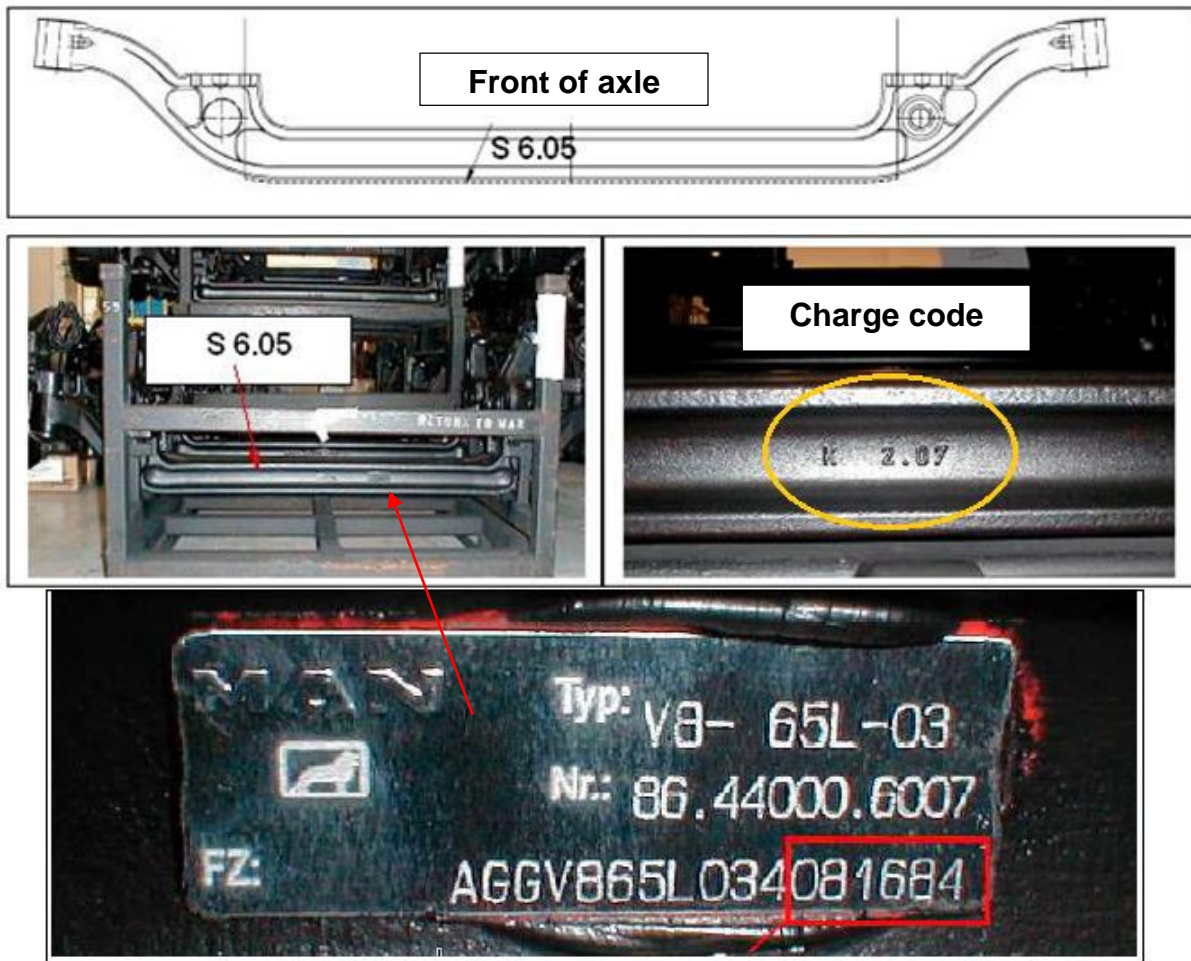
<b>ITS: 6518</b>	
<b>SECTION:</b>	203 Front Suspension
<b>WRITTEN BY:</b>	Tyler Omichinski
<b>SUBJECT:</b>	Inspection of V8-65L Front Axle

# ITS6518

**PROCEDURE:**

**NOTE:** The results of this inspection are to be recorded on the inspection sheet at the end of this document and forwarded to your local New Flyer Regional Product Support Manager. A sample of a completed inspection sheet is also included.

1. Turn the main battery disconnect switch to the "OFF" position.
2. The front axle beam must be inspected on the top and bottom of the beam. If required to access the axle, raise coach in accordance with the New Flyer Service Manual. Use jack stands as appropriate if lifting equipment will obstruct the view of the axle beam.
3. Record the charge code forged in the center of the front face of the axle beam. This charge code consists of up to 4 raised digits and a raised letter (ex.: "S 6.05", "T 8.05", "12.05 X"). An example of charge code format and location is shown in Fig. 1.
4. Record the axle serial number found stamped on the data plate on the front face of the axle beam. The axle serial number is of the format "AGGV865L0340xxxx".

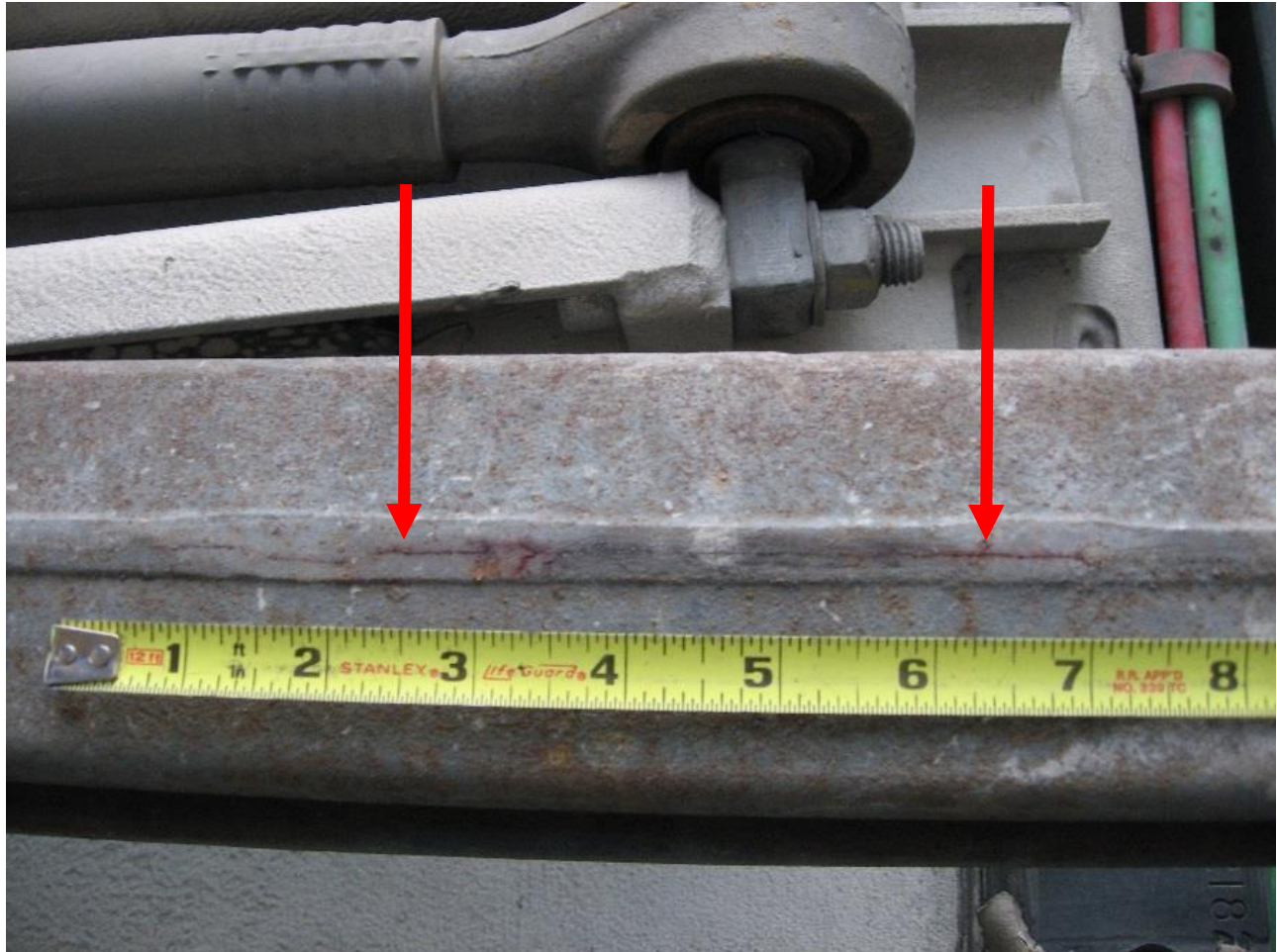


**Figure 1: Location and format of front axle charge code and serial number data plate**



**NEW FLYER**

5. Inspect the top and bottom faces of the front axle down the entire length of the I-beam. Look for longitudinal cracks running down the length of the beam at the forging trim line. Remove debris and corrosion using a clean rag or brush if required. An example of a beam crack is shown in Fig. 2.



**Figure 2: Exemplar longitudinal crack down axle centerline**

6. If cracks are detected, record their relative position and overall length on the inspection sheet.



## NEW FLYER

**NOTE:** If no cracks are found, the axle beam may remain in service. An axle beam with cracks must be replaced. The vehicle with cracks in the axle beam may remain in service until replacement parts are available if:

- The longest crack is less than 12 inches (30 cm) long
- AND the combined length of all cracks on the top axle seam is less than 15 inches (38 cm) long
- AND the combined length of all cracks on the bottom axle seam is less than 15 inches (38 cm) long
- AND no cracks project outward from the forging trim line toward the edges of the beam
- AND no cracks exist on any part of the axle beam other than within the forging trim line on the top and bottom faces of the axle beam

All of the above conditions must be satisfied for the vehicle to remain in service. If any one of the above conditions is not satisfied, the vehicle must be removed from service until the axle beam can be replaced.

**NOTE:** If an axle beam is found to have cracks but meets the criteria for the axle beam to remain in service, it is required that the axle beam be inspected on a weekly basis until the axle beam is replaced. If the axle fails to meet any of the above criteria, the vehicle must be removed from service until the axle beam can be replaced.

If you require clarification on the serviceability of a specific vehicle, contact your local New Flyer Regional Product Support Manager.

7. If the vehicle was raised, lower coach in accordance with the New Flyer Service Manual.
8. Turn the main battery disconnect switch to the "ON" position.
9. Send each vehicle's completed inspection sheet to your local New Flyer Regional Product Support Manager.

**NOTE:** It is required that all beams inspected via this ITS be inspected in perpetuity every 6000 miles (9600 km) as part of the standard front suspension inspection outlined in the Preventative Maintenance section of the New Flyer Service Manual.



**NEW FLYER**

**LABOUR ESTIMATE**

	Operation	Men	Hours	Labour Time M X HR
1	Record front axle charge code and inspect beam	1	0.3	0.3

**PARTS REQUIRED**

No parts required



**NEW FLYER**

**NOTE:** This sheet is a sample of a completed inspection sheet containing all necessary vehicle information

Coach #: 1001 SR #: 3001

Axle S/N: AGGV865L0340 5 3 2 7 9

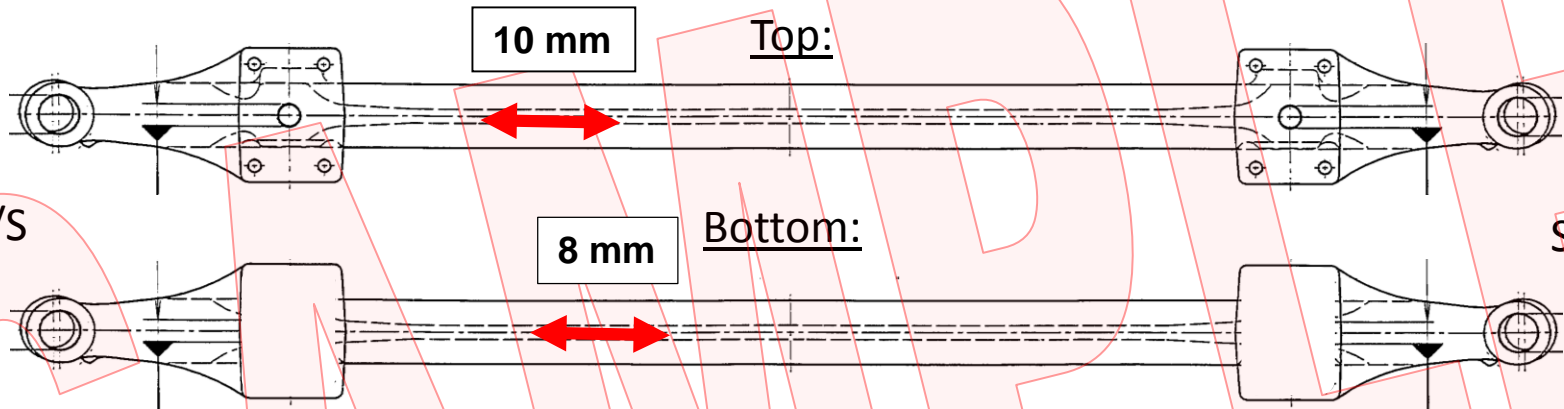
Axle Charge Code: 12.05 X

No Crack  
 Crack

Date: 2/24/17

Inspector Init.: TO

Mileage: 700000 mi/km



Comments: 10 mm crack on top of beam  
8 mm crack on bottom



**NEW FLYER**

Coach # : \_\_\_\_\_ SR #: \_\_\_\_\_

Axle S/N: AGGV865L0340 \_\_\_\_\_

Axle Charge Code: \_\_\_\_\_

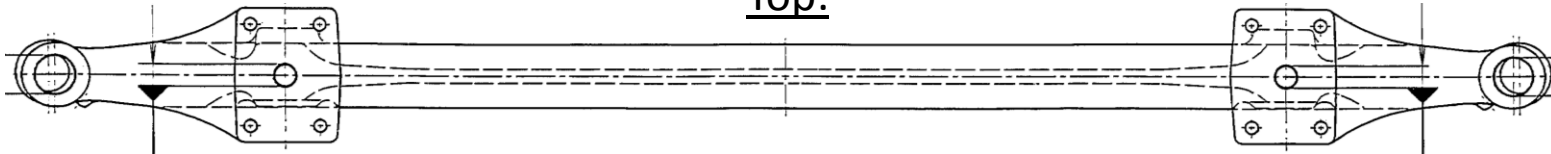
No Crack  
 Crack

Date: \_\_\_/\_\_\_/\_\_\_

Inspector Init.: \_\_\_

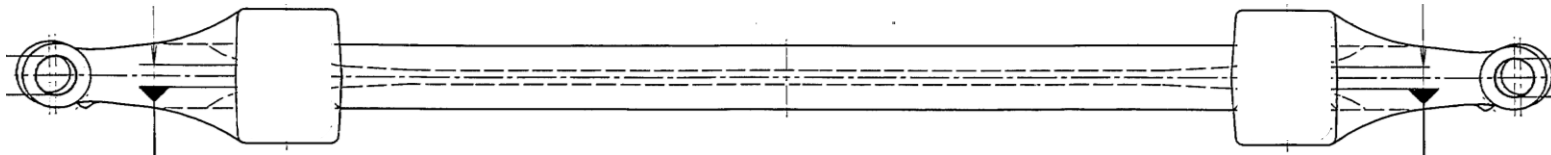
Mileage: \_\_\_\_\_mi/km

Top:



C/S

Bottom:



S/S

Comments: \_\_\_\_\_

\_\_\_\_\_  
 \_\_\_\_\_  
 \_\_\_\_\_  
 \_\_\_\_\_  
 \_\_\_\_\_  
 \_\_\_\_\_