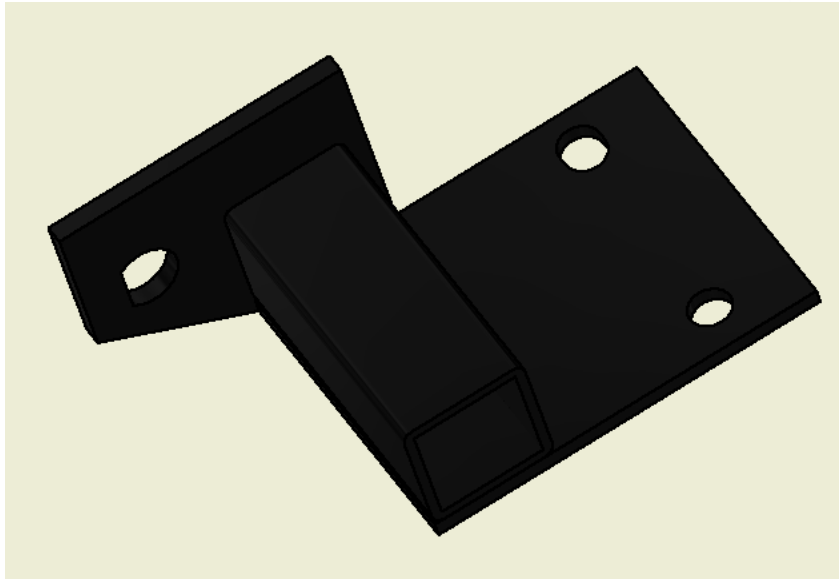


NEW FOREST RIVER - SLIDE MOUNTING BRACKET



TOOLS NEEDED

- 1 1/8" BOX WRENCH
- 3/4" BOX WRENCH

BEGINNING PREPARATIONS

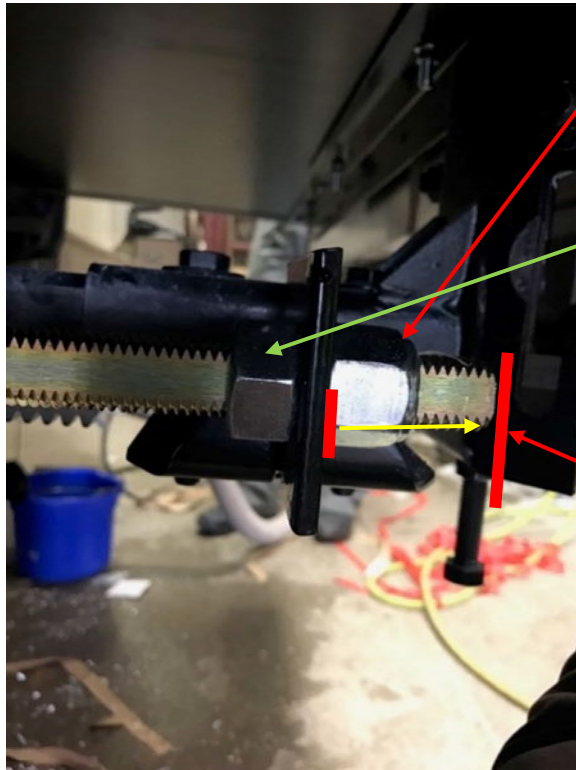
FIGURE 1



- BEGIN BY EXTENDING THE SLIDE OUTWARD HALFWAY AND SET UP A SUPPORT FOR THE BOX.
- *SUPPORTING THE WEIGHT OF THE BOX WILL MAKE IT EASIER/SAFER TO REMOVE AND RE-ATTACH THE ACTUATOR PLATE*
- BE CAREFUL TO USE SOMETHING THAT WONT DAMAGE THE FLOOR OF THE SLIDE BOX

BEGINNING PREPARATIONS

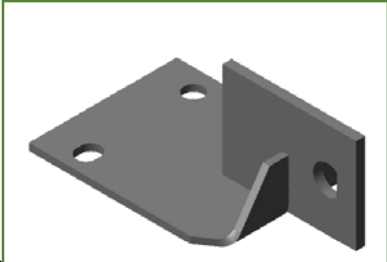
FIGURE 1



- BEGIN BY REMOVING THIS NUT.
- TURN THE BACK NUT IN TOWARDS FRAME APPROXIMATELY 2".
- NOTE STARTING MEASUREMENT OF FRONT NUT - _____"

REMOVAL OF CURRENT SLIDE-HEAD PART

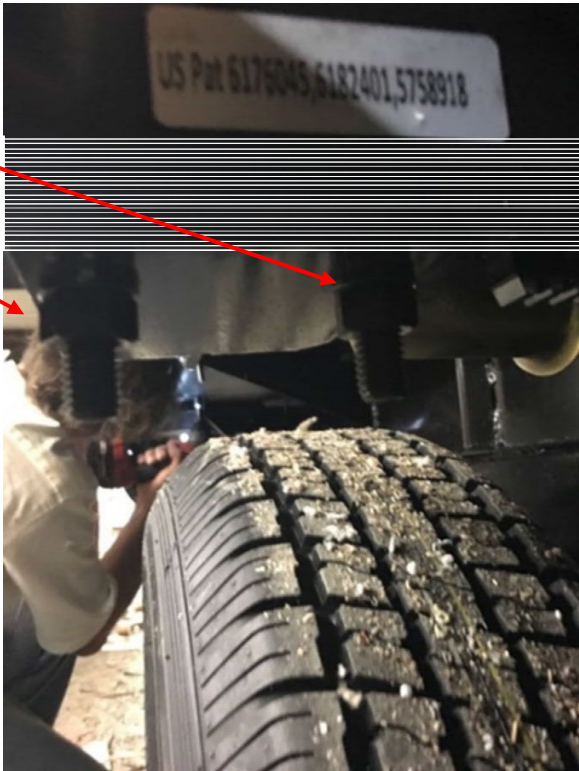
CURRENT PART



- REMOVE THESE TWO NUTS TO FREE THE PLATE AND ALLOW IT TO SLIDE OFF OF THE ACTUATOR.



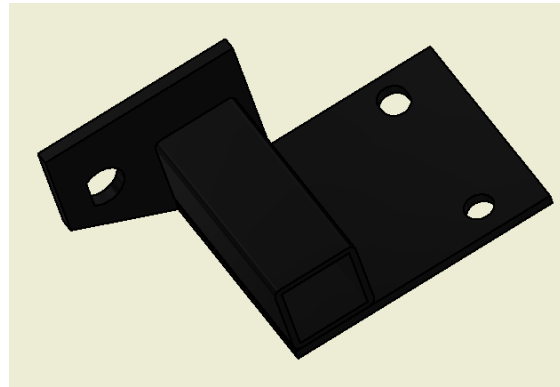
FIGURE 2



INSTALLATION OF THE NEW PART



CURRENT PART



- SLIDE NEW PART ON FACING LIKE THE BELOW ORIENTATION.
- RE-ATTACH FRONT NUT ON ACTUATOR AND THE TWO HOLDING THE HEAD ON.



INSTALLATION OF THE NEW PART

- NEW NUT MEASUREMENT SHOULD BE
 - APPROXIMATELY 2"
 - CLOSER TO ACTUATOR THAN PREVIOUS.
-
- Lift the vehicle up with a jack until the front driver's side tire is no longer on the ground;
 - Measure from the tire tread surface slideout actuator directly above the tire with the slide in the "In Position"
 - If the measurement is less than 3 1/2", contact Rockwood/Flagstaff Warranty for additional repair.



FINAL RESULT

- RUN SLIDE ROOM IN AND OUT TO VERIFY THE ROOM SEALS PROPERLY.
- ADJUST AS NEEDED FOR PROPER SEAL.

