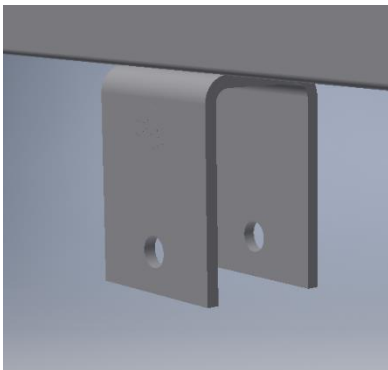


RECALL CAMPAIGN

NHTSA# 17V-065
TC# 2017-126

Date of Publication: March 2017

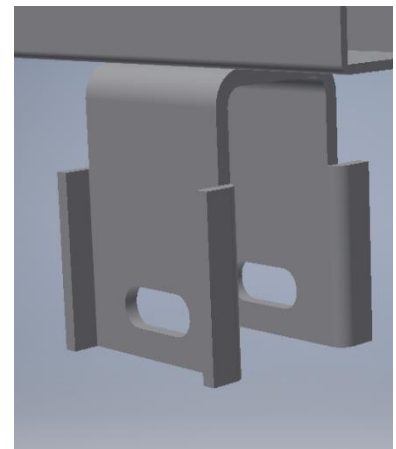
Spring Hanger Identification and Inspection



Standard



Correct Track



Step One: Identify type of spring hangers on your fifth wheel

There are two different styles of spring hanger kits used on the affected units. The first is a Standard spring hanger and the second utilizes the Correct Track system. The following is to identify which type is on your unit.

Correct Track is very distinctive at both the front and rear spring hanger. A octagon shape plate on both the inside and outside of the spring hanger and the spring hanger itself has tabs on each leg of the hanger. These tabs are used to hold the octagon in its desired orientation.

Standard spring hangers have none of the above characteristics and are easy to identify.

Step Two: Inspect Spring Hangers for Damage

The inspection is to visually identify if any of the following conditions exist on your fifth wheel prior to contacting a Jayco Dealer for the Recall Remedy.

The inspection can be performed on the unit both curb side and driver side of the unit without the removal of tires or axles. Use a flashlight or shop light to ensure ample lighting to visually inspect the welds of the spring hangers. Unit may require cleaning of the suspension components for adequate visibility to perform the inspection.

Information to report to Servicing Dealer:

My Inspection found:

1. The spring hanger is **pushed through the tube** (Figure 1)
2. The spring hanger is **Ripped off** (Figure 2)
3. **Cracking around the welds** (Figure 3)
4. No Damage Found



FIG 1: Pushed through the tube



FIG 2: Ripped off



FIG 3: Cracking around the welds/tube