



Recall Campaign

NHTSA#: 17V-037
TC#: 2017-106

9904341 Install new handle and inspect drawer .3 hr
9904341B Install new handle, inspect drawer AND adjust .5 hr
9904341C Install new handle, install new pull out drawer .75 hr

Date of Publication: March 2017 Revised April 2017

REQUIRES PARTS KIT

Action Required

Replace Outside Range Gas Valve Handle and Inspect drawer
Adjust Drawer when inspection confirms too low
Replace pull -out drawer on *specific* Roamer 310BHS travel trailers - *Note Unit Listing for Parts Kit 17V037B*

Affected Units

2017 Fifth Wheels w outside Range	3X	Open Range	375RDS
	3X	Open Range	427BHS
		Mesa Ridge	367BHS
		Mesa Ridge	371MBH
		Mesa Ridge	374BHS
		Roamer	367BHS
		Roamer	371MBH
		Roamer	374BHS

2017 Travel Trailers w outside range		Mesa Ridge	292RLS
		Mesa Ridge	310BHS
		Mesa Ridge	328BHS
		Roamer	292RLS
		Roamer	310BHS
		Roamer	328BHS

**Parts Kit
17V037 OR 17V037B**

Note: Kit can only be ordered using the order form included with this bulletin.

17V307	1 Gas Valve handle
	1 6mm keps nut
	1 label for handle

17V307B	1 Gas Valve handle 1 6mm keps nut 1 label for handle 1 pull out drawer	ONLY the following Roamer 310BHS Travel Trailers require this kit 026765-026772 027033-027036 027103-027106
----------------	--	--

Misc.

10mm Socket

Replace Gas Valve Handle on Exterior Range

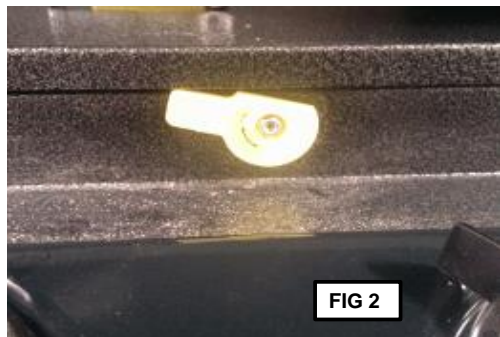
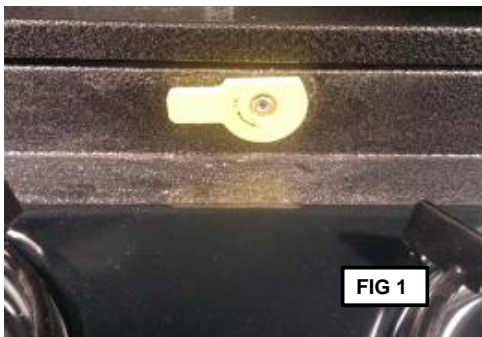


FIG 1&2: Old style gas valve handle allowed the drawer to close with the gas valve still in the open position

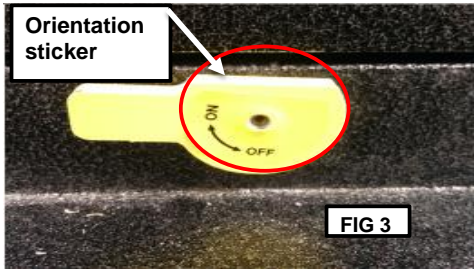


FIG 3: Remove the orientation sticker (on/off sticker) to gain access to the nylon lock nut of handle

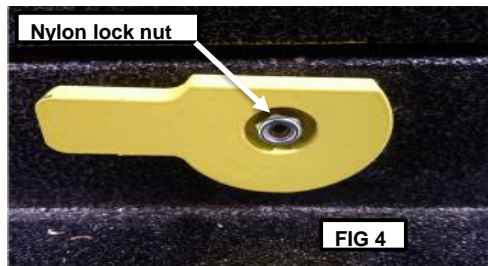


FIG 5: Remove 6mm nylon lock nut with 10mm socket.



FIG 6: Remove old style handle and nylon lock nut and discard.

Steps (7and 8) are **ONLY** for the Units noted above that require the 17V037B parts kit

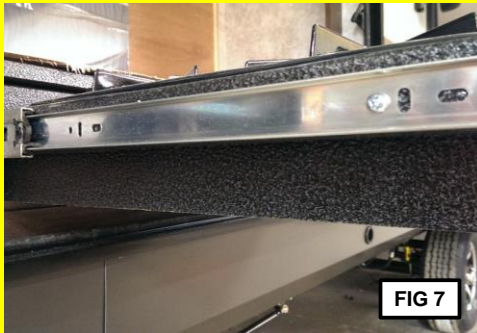


FIG 7: Remove old style of drawer.

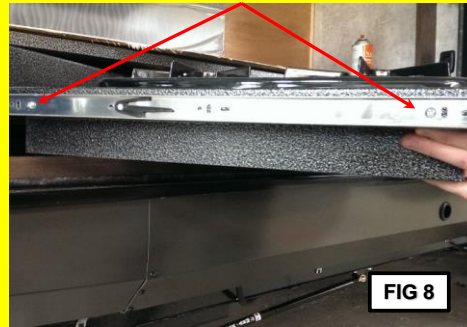


FIG 8: Disassemble male portion of drawer glide assembly by unscrewing the 2 self tapping screws.

Save drawer glide and screws for reassembly on the new drawer provided in Parts Kit 17V037B.
Discard old style drawer.

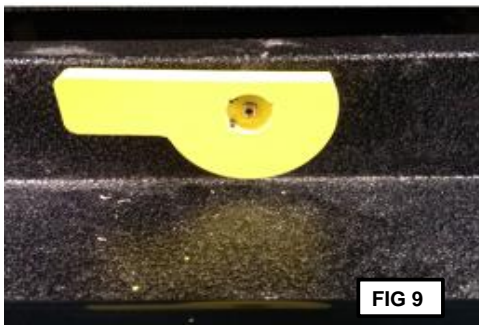


FIG 9: Install the new style handle on drawer.



FIG 10: Prep the 6mm "keps nut" by inserting into 10mm socket.



FIG 11



FIG 12

FIG 11: Install the 6mm "keps nut" by hand until snug.

FIG 12: Tighten 1/4 turn of 10mm socket. **Note: DO NOT over tighten - brass threads will strip**

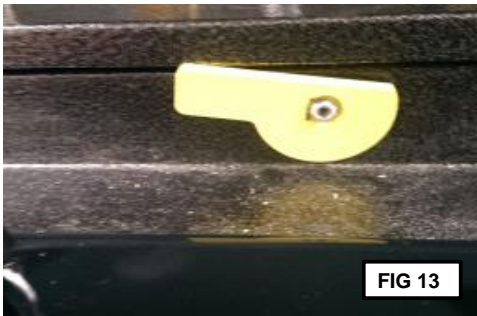


FIG 13

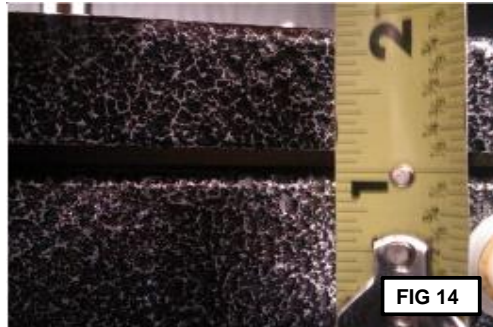
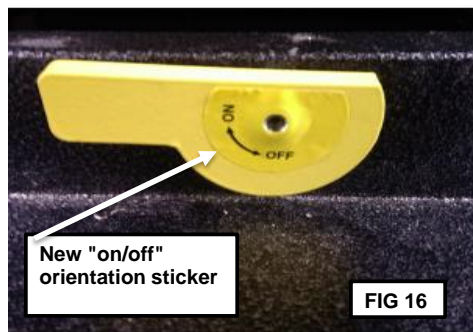


FIG 14

FIG 13: Verify operation. Check gas valve handle and ensure burner is extinguished before valve handle orientation allows for drawer storage.



FIG 15



New "on/off" orientation sticker

FIG 16

Important: The measurements of the drawer must be as noted below to ensure the drawer can not be closed with the gas valve handle in the open position.

FIG 14: Measure back splash of drawer in relation to front counter fascia. Drawer opening should be 1/8" +/- 1/16".

FIG15: If back splash of the stove assembly is too low, pull out drawer guides and adjust guide rails as needed.

FIG 16: Install new orientation sticker (on/off sticker).