



October 1, 2017

**IMPORTANT SAFETY RECALL**  
**NHTSA Recall# 17V-603**

Dear Wabash National Corporation Customer,

This notice is being sent to you in accordance with the National Traffic and Motor Vehicle Safety Act.

Wabash National Corporation (WNC) has decided that a defect which relates to motor vehicle safety exists in certain converter dollies manufactured by WNC.

A complete listing of converter dollies impacted by this recall is included with this letter.

**Description of Defect:**

The Huck fasteners attaching the counter weight tube may loosen and become worn over an extended period of time. If the fasteners become worn, and are not addressed, the potential exists for the dolly counter weight tube to detach.

**Risk to Motor Vehicle Safety:**

If the dolly counter weight detaches while the unit is in motion, there is an increased risk of an accident or injury. Please note, the performance of the counter weight tube does not impact the connection of the dolly to the trailer.

**Precautions You Should Take:**

Visually inspect all dollies from the attached list that are in your possession, as well as at each pre-trip inspection. Check the counterbalance tube for looseness, and for wear around the 4 Huck fasteners connecting it to the frame. If either of these two conditions are found, the recall remedy must be performed before returning the equipment into service. If neither of these two conditions exist at this time, the recall should be performed at the first available opportunity.

**Remedy:**

All of the dolly counterbalance tubes will be remedied according to the provided bulletin. This repair process is estimated to take approximately .75 hours. Wabash will remedy **all** counterbalance tubes affected by this recall, whether or not they ever exhibit any of the described symptoms.

If this repair has been performed at cost to the owner prior to receipt of this notification, the owner may be eligible to receive reimbursement for the cost of obtaining a pre-notification remedy of the problem associated with this recall. For more information, contact the Wabash National Warranty Department at 765-771-5404, Monday – Friday, 7:00am – 4:00pm, ET.

**Further Assistance:**

If your affected dollies have not been repaired within a reasonable amount of time after this defect notification, or if you have additional questions regarding this recall, please contact the Wabash National Warranty Department at 765-771-5404, Monday – Friday, 7:00am – 4:00pm, ET.

If you are the lessor of this vehicle, please forward a copy of this notice to the lessee within 10 days to comply with federal regulations.

**Complaints:**

You may also submit complaints to the Administrator, National Highway Traffic Safety Administration, 1200 New Jersey Ave., S.E., Washington, D.C. 20590 or call the toll-free vehicle safety hotline at 1-888-327-4236 (TTY: 1-800-424-9153); or go to <http://www.safercar.gov>, if it is believed that the defect has not been remedied without charge or within a reasonable time.

We apologize for the inconvenience caused by this safety recall.

Thank you,

Jeremy Kuntz  
Quality / Warranty Manager  
Wabash National  
1000 Sagamore Parkway S  
Lafayette, IN 47905



## BULLETIN

**Subject:** Counterbalance Tube Weld Campaign  
**Date:** 9/21/2017      **Rev.-Date:** FR      **No.:** B17005  
**Re.:** Welded Repair      **Type:** Safety  
**Priority:** Immediate  
**Units Affected:** See attached VIN listing.

### Background:

We have found that it is likely that the “Huck” fasteners connecting the lower Counterbalance Tube to the Counterbalance assembly will loosen over time. This procedure was developed to restore structural integrity, and provide longevity to this connection.

### Material Requirements:

Description	Part Number	Qty/UM
Spray or Brushable Cold Galvanize Coating	N/A	N/A

### Tool Requirements:

- Mig or Stick Welder
- Putty Knife
- Die Grinder / Grinding Wheels
- Drill
- Wire Wheel

### CAUTION

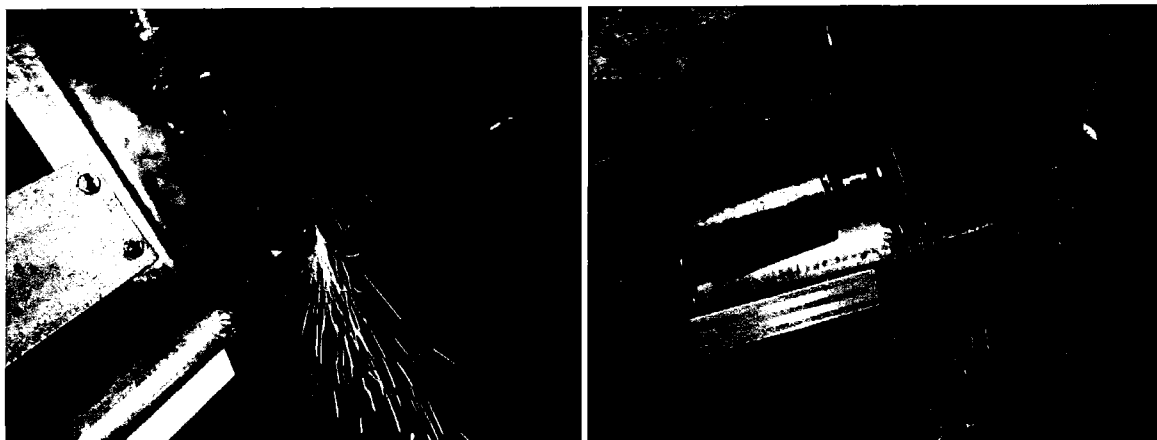
- Wear appropriate personal protective equipment [PPE] like gloves, safety glasses and hard hat for example, when carrying out the following procedure.
- Should welding or cutting be needed, do so in a well ventilated area and wear appropriate head/face/eye protection, welding gloves and clothing.
- Refer to adhesive and chemical manufacturer’s MSDS for safe use and handling instructions if applicable.
- Follow your company’s safety procedures in addition to these recommendations.
- Follow industry standards for installation and tightening of all fasteners where torque values are not called out.

**Procedure:**

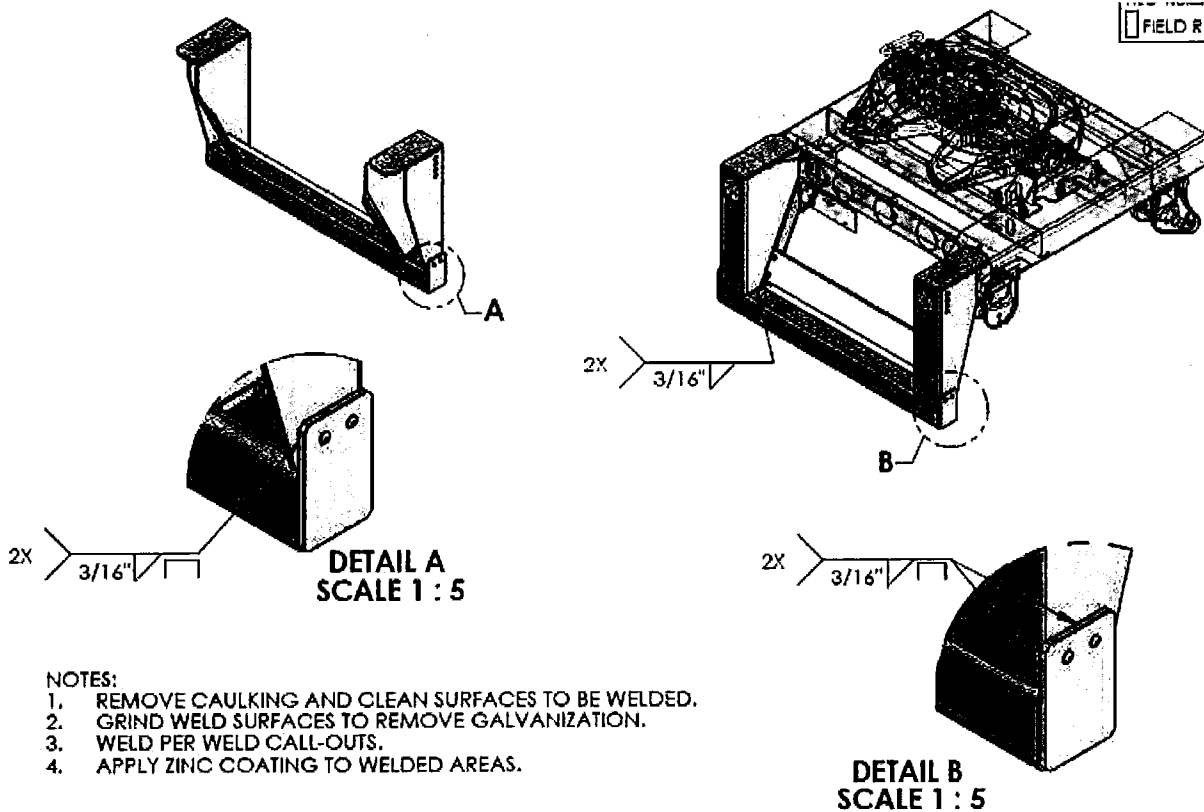
Step 1: Remove caulking from all areas to be welded.



Step 2: Using a Die Grinder remove the galvanizing from the area to be welded.



**Step 3:** Add all needed welds per the attached print directly below.



- NOTES:**
1. REMOVE CAULKING AND CLEAN SURFACES TO BE WELDED.
  2. GRIND WELD SURFACES TO REMOVE GALVANIZATION.
  3. WELD PER WELD CALL-OUTS.
  4. APPLY ZINC COATING TO WELDED AREAS.

Step 4: Using a Wire Wheel and a Drill clean all welded areas to prepare for the coating process.



Step 5: Using a cold galvanizing compound coat all newly welded areas.



**The welded areas should be coated using a Rustoleum Cold Galvanizing Compound or equivalent as pictured above. This can be purchased as a spray or a brushable coating. Brushable is preferred but not required for this repair.**

Completed Unit:



**Notes:**

- Campaign repairs should be completed as quickly as possible.
- Any questions in regards to the campaign should be directed to the Wabash Warranty Dept. @ 765-771-5404.
- If needed replacement parts can also be obtained by contacting the Wabash Warranty Dept.
- Standard Repair Time for this repair is .75 hours per unit.
- Please see the provided vin# listings for units requiring this campaign.

