

IMPORTANT SAFETY RECALL RECALL NO. 17E061

December 2017

Dear ProCharger Customer:

This notice is sent to you in accordance with the requirements of the National Traffic and Motor Vehicle Safety Act. Accessible Technologies, Inc. (ATI) has decided that a defect which relates to motor vehicle safety exists in the mounting bracket contained in certain ProCharger supercharger kits intended for installation on Model Year 2012-2017 Jeep Grand Cherokee SRT8/SRT vehicles. Accordingly, we are initiating this safety recall.

Our records indicate that you may have purchased one of these products. Therefore, please review this letter carefully.

What Products Are Involved?

ITEMS COVERED BY THIS RECALL

This campaign involves mounting brackets (Part Nos. AB037A-100, AB037A-100P, AB037A-100B) in ProCharger supercharger kits, intended for installation on Model Year 2012 – 2017 Jeep Grand Cherokee SRT8/SRT vehicles in the US and Canada. These mounting brackets were included with the following kits:

The SuperCharger kits and systems covered by this recall have the following ProCharger part number(s):

ProCharger Primary System and Kit Part Numbers (for 2012-17 Jeep Grand Cherokee SRT/SRT8 vehicles)

1DL214-SCI

1DL204-SCI

ProCharger System and Kit Part Numbers, if ordered with with optional upgrades (for 2012-17 Jeep Grand Cherokee SRT/SRT8 vehicles)

1DL214-SCI-H

1DL204-SCI-H

1DL214-SCI-H-P

1DL204-SCI-H-P

1DL214-SCI-H-B

1DL204-SCI-H-B

1DL214-SCI-P

1DL204-SCI-P
1DL214-SCI-B
1DL204-SCI-B
1DL204-SCI-D1SC
1DL204-SCI-D1SC-H
1DL204-SCI-D1SC-H-P
1DL204-SCI-D1SC-H-B
1DL204-SCI-D1SC-P
1DL204-SCI-D1SC-B
1DL204-SCI-F1
1DL204-SCI-F1-P
1DL204-SCI-F1-B

Any of the above partners with a suffix of “-Race”, “-RV”, “-BB” or “-PB” are also affected

Associated Vehicle Models and Model Years:
2012-2017 Jeep SRT8

What is the Problem?

ProCharger has discovered that the compressor housing for the above listed applications may, over time, contact the ABS brake lines due to insufficient clearance afforded by the mounting. Contact with the brake lines could compromise the integrity of the line. This contact between the bracket and brake line can occur under a variety of circumstances including improper bracket installation, variation in the engine mount positions within the vehicle manufacturer’s specifications (which potentially results in the bracket being placed close to the ABS line), and/or possible degradation of the motor mount over time that may increase movement of the engine. If this condition remains undetected, the compromised integrity of the ABS brake line could eventually result in loss of brake fluid and degraded braking performance, increasing the risk of a vehicle crash.

Gradual loss of brake fluid and potentially small amounts of brake fluid around the area of the contact between the bracket and ABS line may occur prior to degraded braking performance. The brake warning light and the ABS warning light may also be activated. However, brake pressure could be also lost without either of these early indicators manifesting in advance of brake failure.

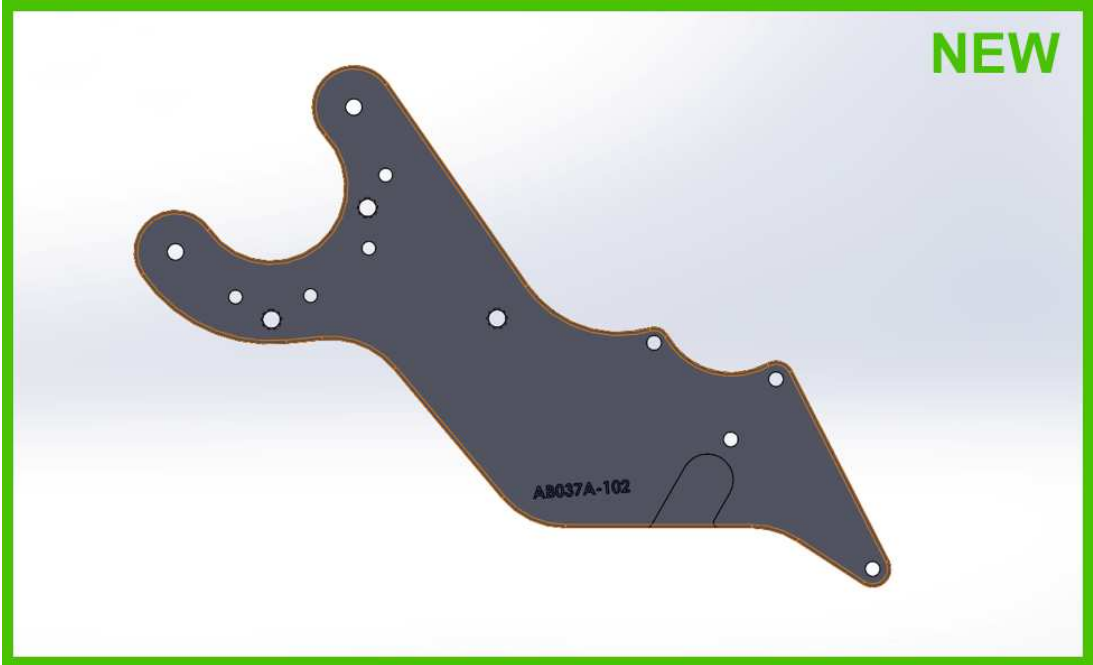
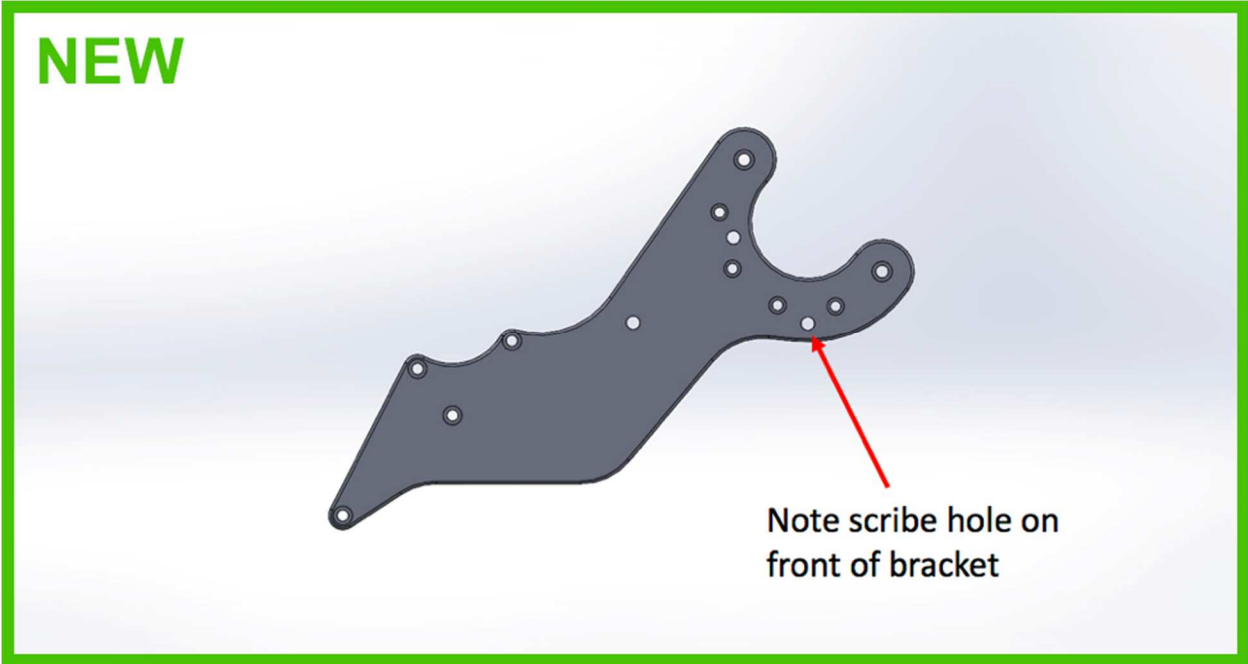
What Should You Do?

Reference Images

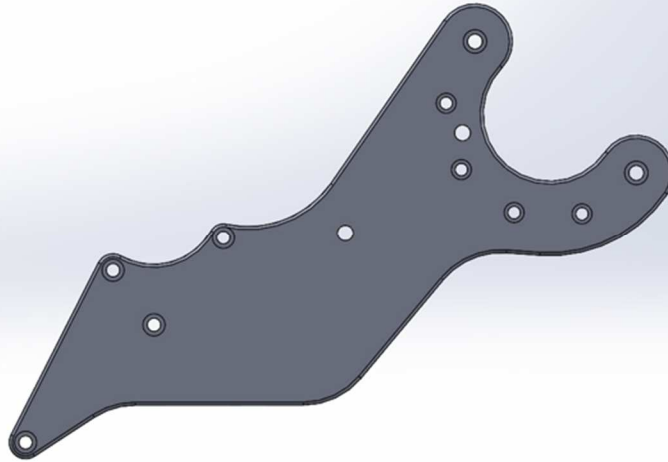
New Bracket

Satin Finish: AB037A-102
Black Finish: AB037A-102B

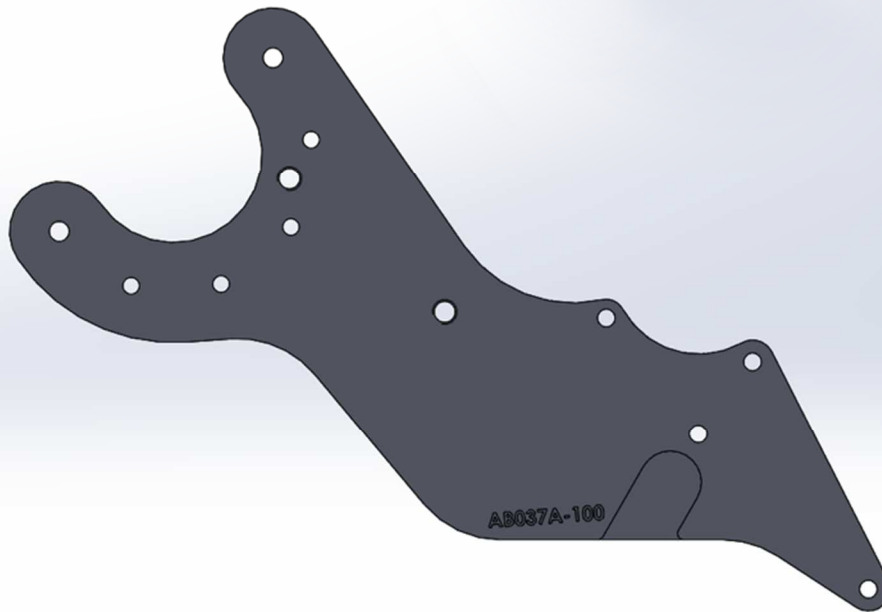
Polished Finish: AB037A-102P



RECALLED BRACKET



RECALLED BRACKET



If you have one of the vehicles listed above, a visual inspection will easily identify whether you have a kit or system covered by this recall. The replacement part can be visually identified by the addition of an unused scribe hole on the front (forward) facing side of the new replacement bracket (See top two illustrations above, outlined in green).

Please schedule an appointment at your earliest opportunity with the dealer that sold and/or installed the kit/system. If you self-installed, ATI ProCharger can support you directly. If you own one of the kits containing the recalled mounting brackets, ATI will send you an improved bracket for remounting the supercharger either directly to you, if your ProCharger was self-installed, or to your local dealer, and reimburse you for the cost of remounting the supercharger.

Your local ProCharger dealer should already have replacement brackets on hand to facilitate this installation prior to your scheduled appointment and will make every effort to accommodate you promptly. We urge you to drive your vehicle minimally, if at all, prior to having it inspected in order to verify whether your bracket needs replacement. Visual confirmation should take no more than a few minutes. Note that if it is subject to replacement, the upgraded bracket does not otherwise affect the overall durability or performance of the kits/systems and solves only for this issue. The replacement bracket will be available to match the finish of your existing bracket if so indicated.

If you have any questions, or need a dealer referral in connection with the above, please contact ATI Customer Service at (913) 338-2886 or by email at sales@procharger.com. If you are unable to obtain a remedy without charge within a reasonable time, you may submit a complaint to: Administrator, National Highway Traffic Safety Administration, 1200 New Jersey Avenue, SE, Washington, D.C. 20590; or call the toll-free Auto Safety Hotline at 1-888-327-4326 (TTY: 1-800-424-9153); or go to <http://www.safercar.gov>

We appreciate your cooperation and prompt attention to this important matter, and apologize for any inconvenience.

Sincerely,

Accessible Technologies, Inc.