



MERCEDES-BENZ USA, LLC  
One Mercedes-Benz Dr.  
Sandy Springs, GA 30328  
Phone: (770) 705-0600  
Fax: (770) 705-0117  
MBUSA.com

Service

# newschannel update

TO: Mercedes-Benz Dealer Principals, General Managers, Sales Managers, Service Managers, Parts Managers	FROM: Gregory Gunther, Department Manager, Vehicle Compliance and Analysis, Engineering Services
RE: <b>Recall Campaign 2017120017 Launch Notification Seatbelt Guide Loop Retrofit (1 of 2) MY 18 190 (AMG GT-Class Coupe)</b>	DATE: March 23, 2018

## IMPORTANT NEW RECALL CAMPAIGN LAUNCH UPDATE





# RECALL CAMPAIGN LAUNCH NOTIFICATION

March 23, 2018

<b>Campaign No. :</b>	<b>Campaign Desc. :</b>	<b>Seatbelt Guide Loop (Coupe)</b>
<b>2017120017</b>	<b>1712P91D35</b>	
<p>This is to notify you of the <b>Recall Campaign LAUNCH</b> to retrofit additional components to the seatbelt guidance on <b>284</b> MY 2018 Model 190 (AMG GT-Class Coupe) vehicles. The recall campaign will be visible on the <a href="http://www.safercar.gov">www.safercar.gov</a> website and may generate questions from customers. Affected VINs will be flagged in VMI as "OPEN" on March 23, 2018. An additional notification, 2017120018, applies to AMG-GT Class Roadster vehicles.</p>		
<b>Background</b>		
<b>Issue</b>	Daimler AG ("DAG"), the manufacturer of Mercedes-Benz vehicles, has determined that on certain AMG GT-Class vehicles (190 platform), the seat belt may bind within the seat belt guide loop during normal operation. The resulting slack in the seatbelt could impair the restraint function of the seatbelt.	
<b>What We're Doing</b>	MBUSA will conduct a voluntary recall. An authorized Mercedes-Benz dealer will retrofit an additional component to the seatbelt guide loop.	
<b>Parts</b>	<b>Parts are available and may be ordered.</b>	
<b>Vehicles Affected</b>		
<b>Vehicle Model Year(s)</b>	2018	
<b>Vehicle Model</b>	AMG GT-Class	
<b>Vehicle Populations</b>		
<b>Total Recall Population</b>	284	
<b>Total Vehicles in Dealer Inventory</b>	33	
<b>MBUSA Internal Vehicles</b>	2	
<p><b>Given this notice, it is a violation of Federal law for a dealer to sell or lease any new MY18 AMG GT-Class vehicles in dealer inventory covered by this notification until the vehicle has been repaired. Once remedy parts are available, the vehicles will be flagged as "OPEN" and Work Instructions will be available in Star TekInfo. Once the repair is complete, the vehicle may be sold or leased.</b></p> <p style="text-align: center;"><b>Loaner and demonstrator vehicles may continue to be driven, but must not be retailed until repaired.</b></p> <p><b>Additionally, given this notice, it is a violation of Federal Law for car rental companies to rent new MY18 AMG GT-Class vehicles covered by this notification until the vehicle has been repaired.</b></p>		
<b>Next Steps/Notes</b>		
<b>Customer Notification Timeline</b>	Customer letters are scheduled to be mailed in early April, 2018.	
<b>AOMS/SOMS</b>	AOMs – This recall may generate questions from your dealers. Please forward this notice to your dealers ASAP.	
<b>Rental Fleet Partners</b>	This recall may affect vehicles in your fleet. Please contact your respective MBUSA fleet representative for further information and next steps. For repairs, please contact your preferred MBUSA dealer.	
<p>While we regret any inconvenience this may cause, MBUSA is determined to maintain a high level of vehicle quality and customer satisfaction. Please refer all customer inquiries to the Customer Assistance Center at 1-800-FOR-MERCEDES.</p>		



Mercedes-Benz

Campaign No. 2017120017, March 2018

TO: ALL MERCEDES-BENZ CENTERS

SUBJECT: **Model 190 Model year 2018**  
**Retrofit seat belt guide on driver's seat and front passenger seat (coupe)**

Daimler AG ("DAG"), the manufacturer of Mercedes-Benz vehicles, has determined that on certain AMG GT-Class vehicles (190 platform), the seat belt may bind within the seat belt guide loop during normal operation. The resulting slack in the seatbelt could impair the restraint function of the seatbelt. MBUSA will conduct a voluntary recall. An authorized Mercedes-Benz dealer will retrofit an additional component to the seatbelt guide loop.

Prior to performing this Recall Campaign:

- Please check VMI to determine if the vehicle is involved in the Campaign and if it has been previously repaired.
- Please review the entire Recall Campaign bulletin and follow the repair procedure exactly as described.

Please note that Recall Campaigns **do not expire** and may also be performed on a vehicle with a vehicle status indicator.

Approximately 286 vehicles are involved.

Order No. P-RC-2017120017

This bulletin has been created and maintained in accordance with MBUSA-SLP S423QH001, Document and Data Control, and MBUSA-SLP S424HH001, Control of Quality Records.

## Procedure

1. Install protective foil (**A, figure 1**) between seat belt strap (**B, figure 1**) and seat backrest.

**i** The protective foil must be installed between the shim (**C, figure 1**) if it is installed and the seat backrest cover.

**i** There are also seat versions without shims!

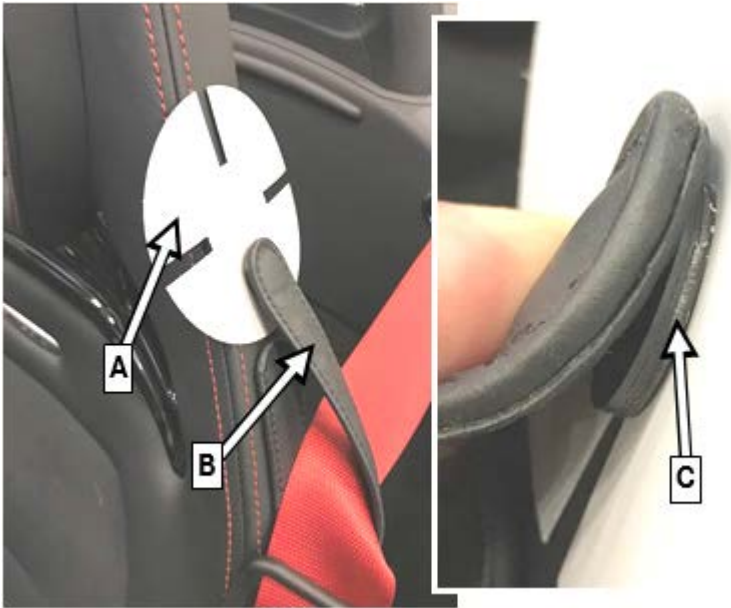


Figure 1

2. Measure the outside diameter of the shim between the seat backrest and the seat belt strap.

**i** If the outside diameter is **17 mm**, continue with operation step 3.

**i** If the outside diameter is **12 mm** or if no shim is installed, continue with operation step 4.

3. Sever the shim (**C, figure 1**) with pliers and remove.

**i** The shim will not be installed anymore.

**i** Do not damage the seat belt strap or seat cover.



Figure 2

4. Place cutting template (**D**, figure 3) for marking the cutting edge on the seat belt strap.

**i** Place the rounding of the cutting template flush with the radius of the seat belt strap at the top.

**i** Mark cutting edge on the inner side of the seat belt strap.

**i** After positioning, hold the template on the cutting edge.

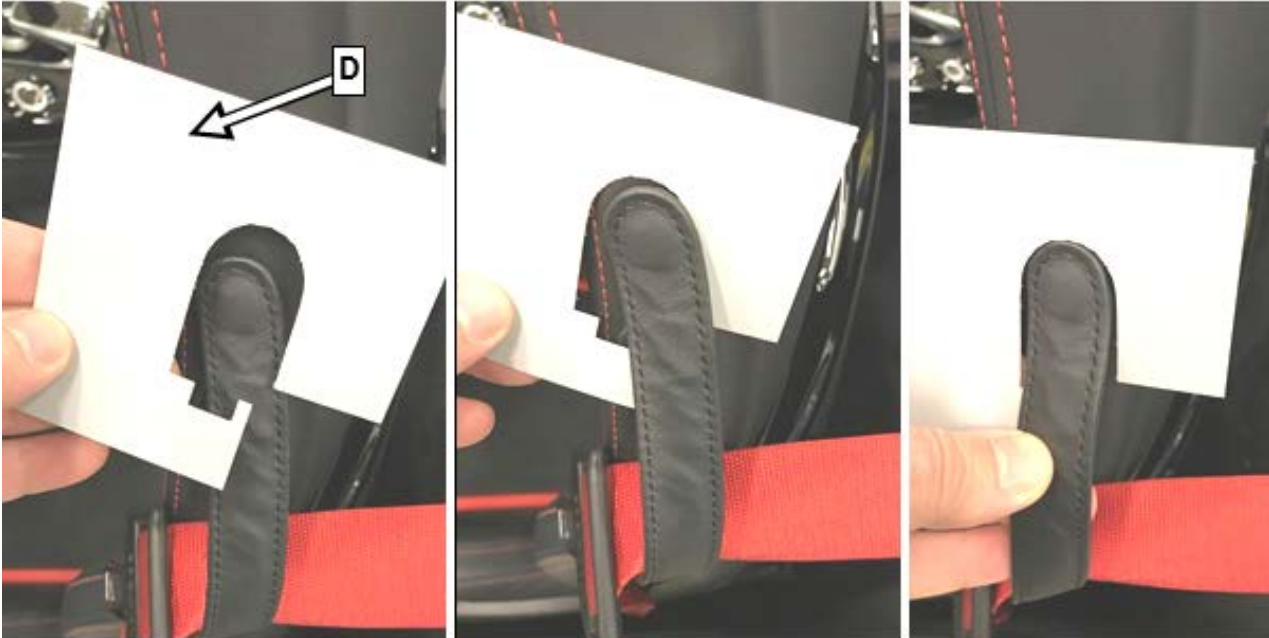


Figure 3

5. Turn the seat belt strap over with the template positioned and mark the cutting edge on the inner side (**E**, figure 4).

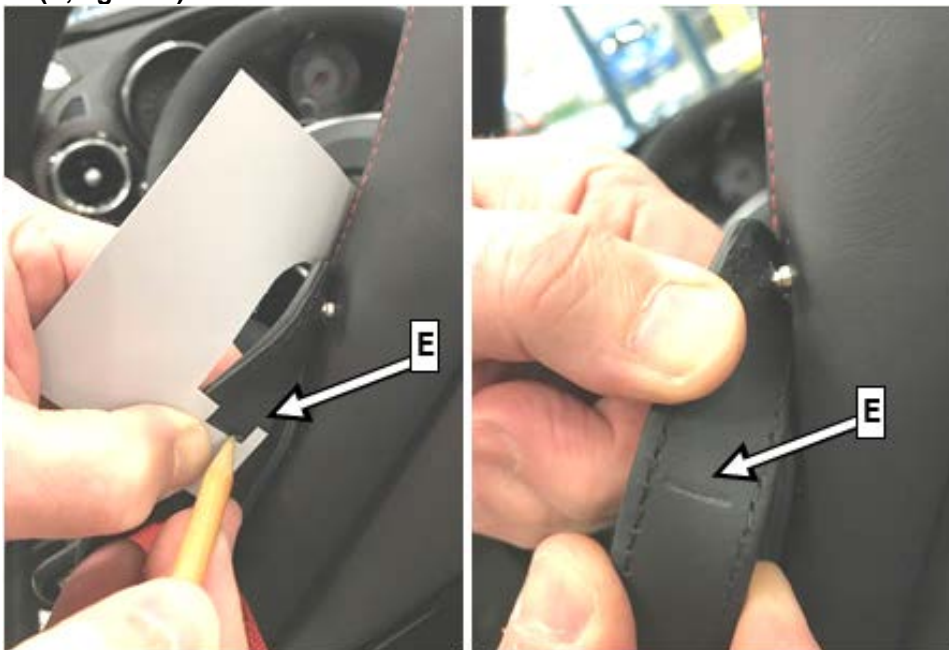


Figure 4

6. Carefully cut the leather along the marked cutting edge.

**i** Do not cut into the seams of the leather belt strap.

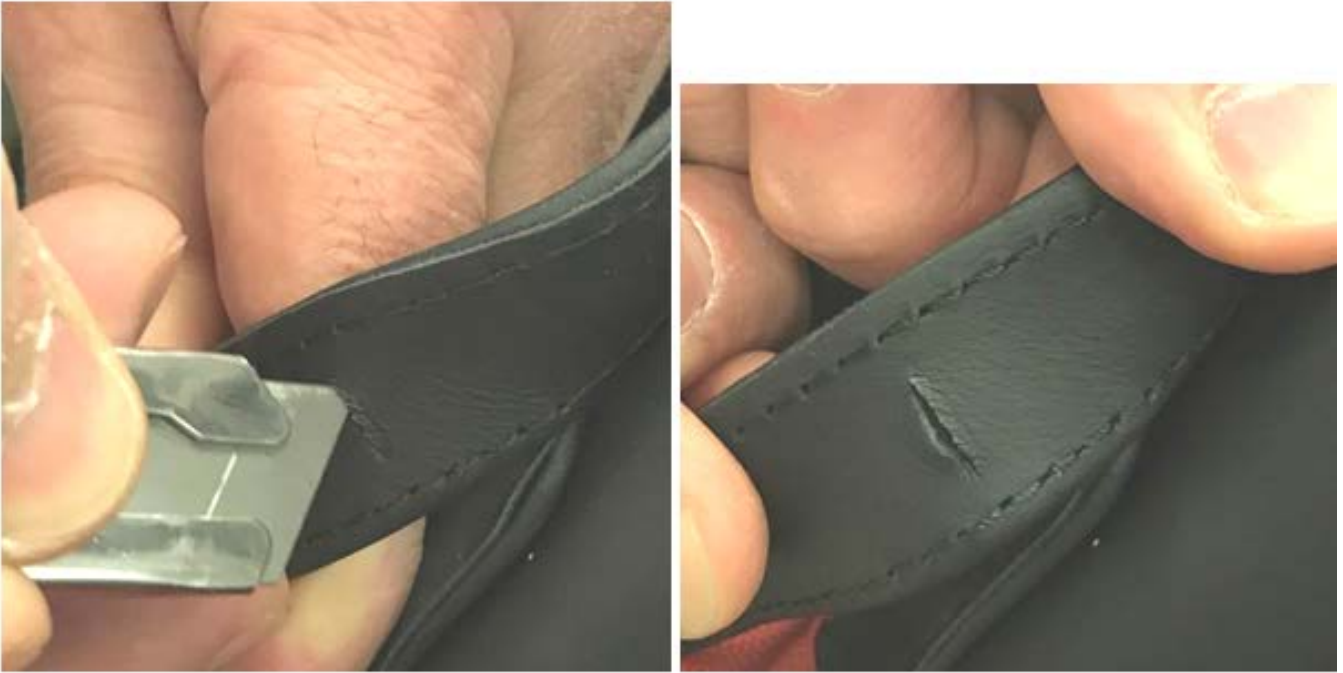


Figure 5

7. Only for seat belt straps with **12 mm shims** that are still installed: Break seat belt guide at the perforation and deburr the broken edge.

**i** For seats without a shim, continue with **operation step 8**.



Figure 6



8. Insert the seat belt guide completely into the notched seat belt strap and then push upwards towards the seat belt strap rivet.

**i** If a previous version is installed, remove it and replace it with the current version.



Figure 7

9. Thread in the lower edge (F, figure 8) of the seat belt guide under the seat belt strap.



Figure 8

10. Slide the protective foil (**G**, figure 9) between the seat belt strap and seat belt guide.

**i** This makes it possible to insert the upper part without twisting the seat belt strap.

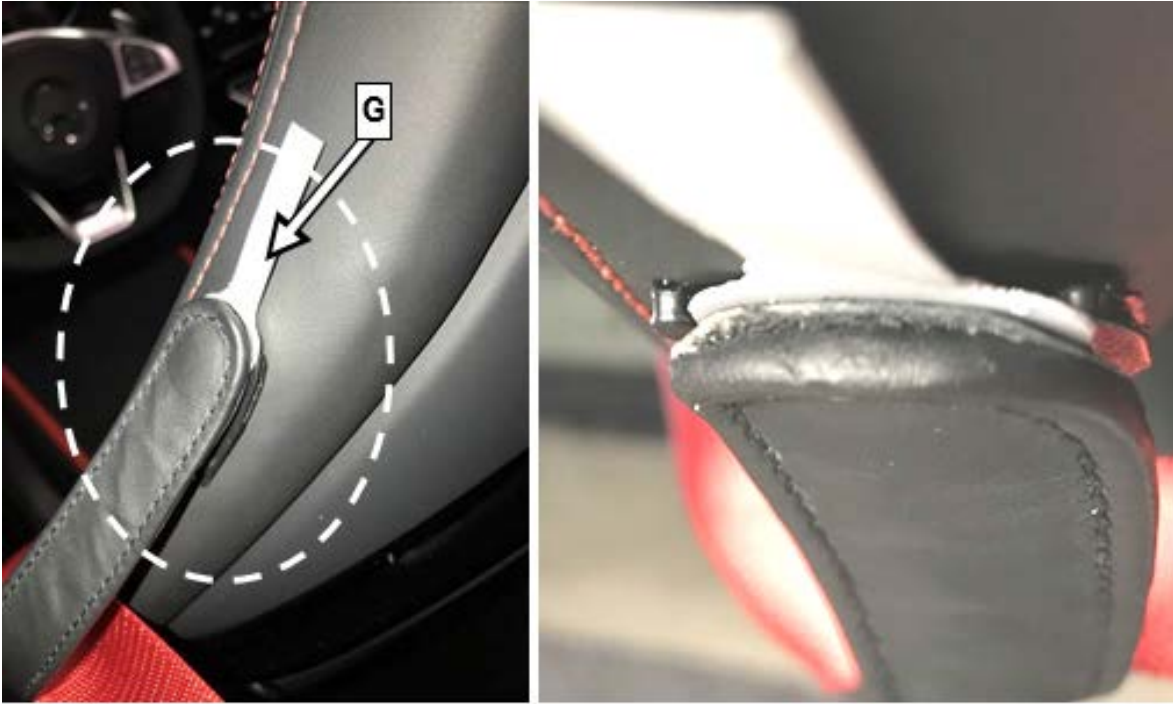


Figure 9

11. Slide the protective foil (**A**, figure 10) over the attachment rivet between the seat belt guide and the seat cover.



Figure 10



12. Place the upper part of the seat belt guide (**H, figure 11**) and make it engage with the lower part with two to three teeth.

**i** The wider side of the upper part (**J, figure 11**) must be installed against the direction of travel!

**i** There are different upper parts for the left and right seat in the parts kit!

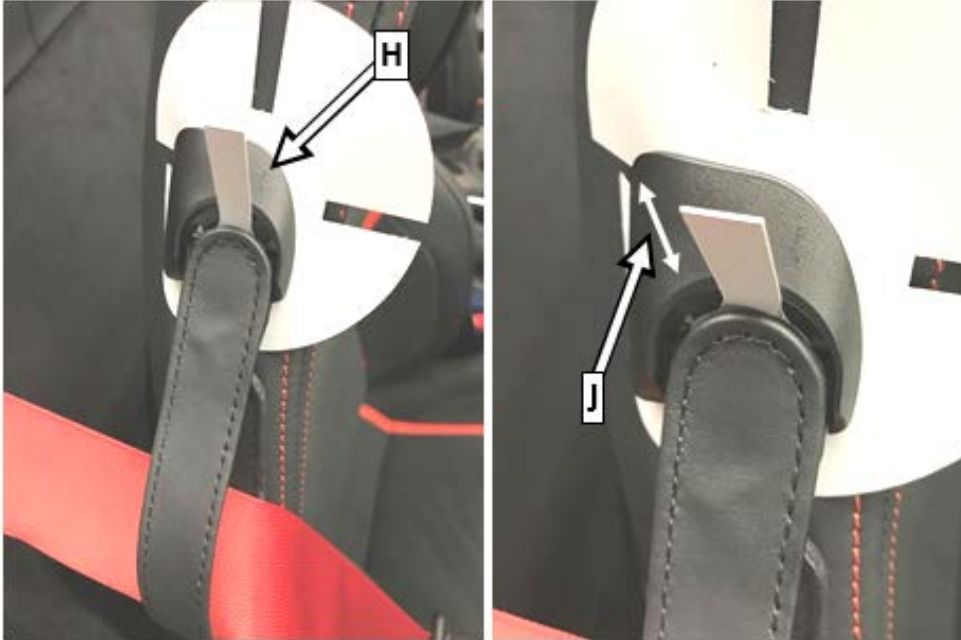


Figure 11

13. Take out the protective foil (**G, figure 9**) and place the protective cap (**K, figure 12**) on the seat belt strap end and hold it.

**i** The protective cap is used later when the upper and lower part of the seat belt guide are bonded to protect the seat belt strap.

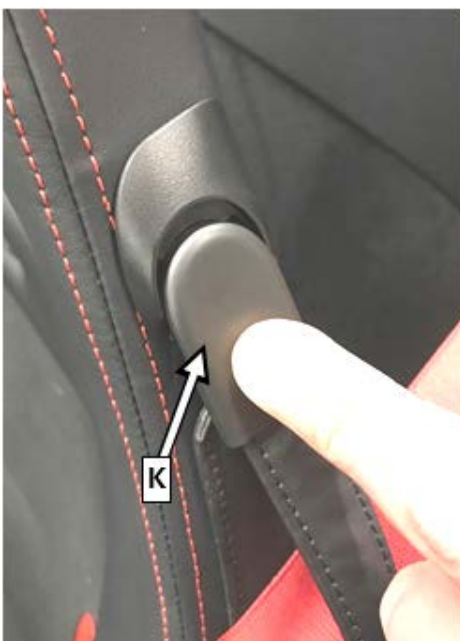


Figure 12

14. Install the supplied needle on the adhesive and apply adhesive to the engaging parts on the left, right and top on the retaining bridges for the catch tabs of the upper part.

**i** After applying adhesive, remove the protective cap.



Figure 13

15. Insert plastic strip into the lower part of the seat belt guide and completely engage the upper part with the lower part.

**i** Then remove the protective foil.



Figure 14

16. Repeat operation steps 1 to 15 on the opposite seat belt strap.

**i** Content of the parts kit (figure 15)



Figure 15

**Primary Parts Information**

Qty.	Part Name	Part Number	Estimated Replacement Rate
As required	Seat belt guide parts kits, (cacciatore beige)	A 190 919 19 00 8T92	100%
As required	Seat belt guide parts kits, (saddle brown)	A 190 919 19 00 8T14	100%
As required	Seat belt guide parts kits, (black)	A 190 919 19 00 9051	100%
1*	Single-component adhesive	A 003 989 17 71	100%

\* Single-component adhesive (super glue) can be locally sourced. Part number (A 003 989 17 71) is sufficient for 30 vehicles.

**Warranty Information**

**Operation:** Retrofit on driver's seat and front passenger seat (02-2247)

Damage Code	Operation Number	Labor Time (hrs.)
91 931 38 7	02-2247	0.7

**i** Note

Operation Number labor times are subject to change.