

Recall Campaign

Daimler Trucks
North America LLC

February 2018

FL736AB

NHTSA #17V-314 School Buses

#17V-317 Non-School Buses

Subject: TBB Davenport Lap Belt Anchorage

**Models Affected: Specific Saf-T-Liner HDX buses
manufactured October 28, 2011, through January 9, 2017.**

General Information

Daimler Trucks North America LLC (DTNA), on behalf of its wholly owned subsidiary, Thomas Built Buses (TBB), has decided that a defect that relates to motor vehicle safety exists on the vehicles mentioned above.

There are approximately 80 vehicles involved in this campaign.

Seat lap belts may have been anchored to the seat instead of to the bus structure. If anchored this way, the seat belt may not meet the requirements of FMVSS 210, Seat Anchorage Requirements, and increase the risk of injury in the event of a crash.

Lap belts will be inspected and modified as needed.

Additional Repairs

Dealers must complete all outstanding Recall and Field Service campaigns prior to the sale or delivery of a vehicle. A Dealer will be liable for any progressive damage that results from its failure to complete campaigns before sale or delivery of a vehicle.

Owners may be liable for any progressive damage that results from failure to complete campaigns within a reasonable time after receiving notification.

Work Instructions

Please refer to the attached work instructions.

Recall Campaign

Daimler Trucks
North America LLC

February 2018
FL736AB
NHTSA #17V-314 School Buses
#17V-317 Non-School Buses

Replacement Parts

Replacement parts are now available and can be obtained by ordering from your facing Parts Distribution Center.

Table 1 – Replacement Parts for FL736

Campaign Number	Kit Number	Part Number	Description	Qty.
FL736AB	TBB 217213 Seat Belt Anchor Bar Hardware Kit 1 Kit Per Bus	TBB 27181666	BOLT-7/16-20 X 1,FINISHED HEX	16 ea
		TBB 27121621	WASHER-LOCK,LIGHT SPLIT,7/16,CAD/ZINC	16 ea
		TBB 27271506	NUT-7/16-20 NF HEX C	16 ea
	N/A	TBB 183431	ANCHOR SEATBELT SEAT DAVENPORT (If needed)	1 ea
	N/A	TBB 215942	SUPPORT BRACKET ASM DAVENPORT LAP BELT (Use only when TBB 183431 is also installed)	2 ea

Table 1

Removed Parts

Please follow Warranty Failed Parts Tracking shipping instructions for the disposition of all removed parts.

Labor Allowance

Table 2 – Labor Allowance

Campaign Number	Procedure	Time Allowed (Hours)	SRT Code	Corrective Action
FL736AB	Inspect seat belt anchorage	0.2	996-R006A	06 – Inspect
	Inspect and move seat belts from seat to seat belt anchor bar	0.8	996-R006B	12 – Repair Recall/Campaign
	Inspect and install seat belt anchor bar and move seat belts from seat to seat belt anchor bar	11.0	996-R006C	12 – Repair Recall/Campaign

Table 2

Recall Campaign

Daimler Trucks
North America LLC

February 2018

FL736AB

NHTSA #17V-314 School Buses

#17V-317 Non-School Buses

Claims for Credit

You will be reimbursed for your parts, labor, and handling by submitting your claim through the Warranty system within 30 days of completing this campaign. Please reference the following information in OWL:

- Claim Type is **Recall Campaign**.
- In the Campaign field, enter the campaign number (**FL736-A or FL736-B**)
- In the Primary Failed Part field, enter **TBB 179120**.
- In the Parts section, enter the appropriate part number(s) as shown in the Replacement Parts Table.
- In the Labor section, enter the appropriate SRT from the Labor Allowance Table.
- The VMRS Component Code is **174-034-010** and the Cause Code is **A1 - Campaign**.
- **U.S. and Canada – Reimbursement for Prior Repairs**. When a customer asks about reimbursement, please do the following:
 - Accept the documentation of the previous repair.
 - Make a brief check of the customer's paperwork to see if the repair may be eligible for reimbursement.
 - Submit a Recall Pre-Approval request for a decision and authorized amount.
 - Submit a "based on" claim for the approved pre-approval.
 - Attach the documentation to the pre-approval request.
 - When your claim is paid, reimburse the customer the appropriate amount.

IMPORTANT: OWL must be viewed prior to performing the recall to ensure the vehicle is involved and the campaign has not been previously completed. Also, check for a completion sticker prior to beginning work.

Contact the Warranty Campaigns Department at (336) 889-4871, from 8:00 a.m. to 5:00 p.m. Eastern Time, Monday through Friday, via Web inquiry at AccessFreightliner.com / My Tickets and Submit an Inquiry, if you have any questions or need additional information.

To return excess kit inventory related to this campaign, U.S. dealers must submit a Parts Authorization Return (PAR) to the Memphis PDC. Canadian dealers must submit a PAR to their facing PDC. All kits must be in resalable condition. PAR requests must include the original purchase invoice number.

The letter notifying U.S. and Canadian vehicle owners is included for your reference.

Please note that the National Traffic and Motor Vehicle Safety Act, as amended (Title 49, United States Code, Chapter 301), requires the owner's vehicle(s) be corrected within a reasonable time after parts are available to you. The Act states that failure to repair a vehicle within 60 days after tender for repair shall be prima facie evidence of an unreasonable time. However, circumstances of a particular situation may reduce the 60 day period. Failure to repair a vehicle within a reasonable time can result in either the obligation to (a) replace the vehicle with an identical or reasonably equivalent vehicle, without charge, or (b) refund the purchase price in full, less a reasonable allowance for depreciation. The Act further prohibits dealers from selling a vehicle unless all outstanding recalls are performed. Any lessor is required to send a copy of the recall notification to the lessee within 10 days. Any subsequent stage manufacturer is required to forward this notice to its distributors and retail outlets within five working days.

February 2018

FL736AB

NHTSA #17V-314 School Buses

#17V-317 Non-School Buses

Copy of Notice to Owners

Subject: TBB Davenport Lap Belt Anchorage

This notice is sent to you in accordance with the requirements of the National Traffic and Motor Vehicle Safety Act.

Daimler Trucks North America LLC, on behalf of its wholly owned subsidiary, Thomas Built Buses, has decided that a defect which relates to motor vehicle safety exists on specific Saf-T-Liner HDX buses manufactured October 28, 2011, through January 9, 2017.

Seat lap belts may have been anchored to the seat instead of to the bus structure. If anchored this way, the seat belt may not meet the requirements of FMVSS 210, Seat Anchorage Requirements, and increase the risk of injury in the event of a crash.

Lap belts will be inspected and modified as needed.

To arrange for repairs, you should contact your local Thomas Built Buses dealer immediately. The repair will take approximately half an hour to 11 hours, depending on the work required, and will be performed at no charge to you.

You may be liable for any progressive damage that results from your failure to complete the Recall within a reasonable time after receiving notification.

If you do not own the vehicle that corresponds to the identification number(s) which appears on the Recall Notification, please return the notification to the Warranty Department with any information you can furnish that will assist us in locating the present owner. If you have leased this vehicle, Federal law requires that you forward this notice to the lessee within 10 days.

If you have paid to have this recall condition corrected prior to this notice, you may be eligible to receive reimbursement. For further information, please contact the Warranty Department at (336) 889-4871, 8 a.m. to 5 p.m. Eastern Time Monday through Friday. To find a dealer in your area please go to www.thomasbus.com.

If you have any questions about this recall, please contact the Warranty Department at (336) 889-4871, 8:00 a.m. to 5:00 p.m. Eastern Time, Monday through Friday. If you are not able to have the defect remedied without charge and within a reasonable time, you may wish to submit a complaint to the Administrator, National Highway Traffic Safety Administration, 1200 New Jersey Avenue, SE, Washington, DC 20590; or call the Vehicle Safety Hotline at (888) 327-4236 (TTY: 800-424-9153); or to <http://www.safercar.gov>.

We regret any inconvenience this action may cause but feel certain you understand our interest in motor vehicle safety.

THOMAS BUILT BUSES WARRANTY DEPARTMENT

Enclosure

February 2018

FL736AB

NHTSA #17V-314 School Buses

#17V-317 Non-School Buses

Work Instructions

Subject: TBB Davenport Lap Belt Anchorage

Models Affected: Specific Saf-T-Liner HDX buses
manufactured October 28, 2011, through January 9, 2017.

Seat Belt Inspection and Installation

1. Park the vehicle, shut down the engine, place in Park, and chock the wheels.
2. Using a 9/16 in. wrench, remove the 2 seat bolts from underneath the seats for each of the 4 davenport seats. Retain the 8 bolts. See **Figure 1**.

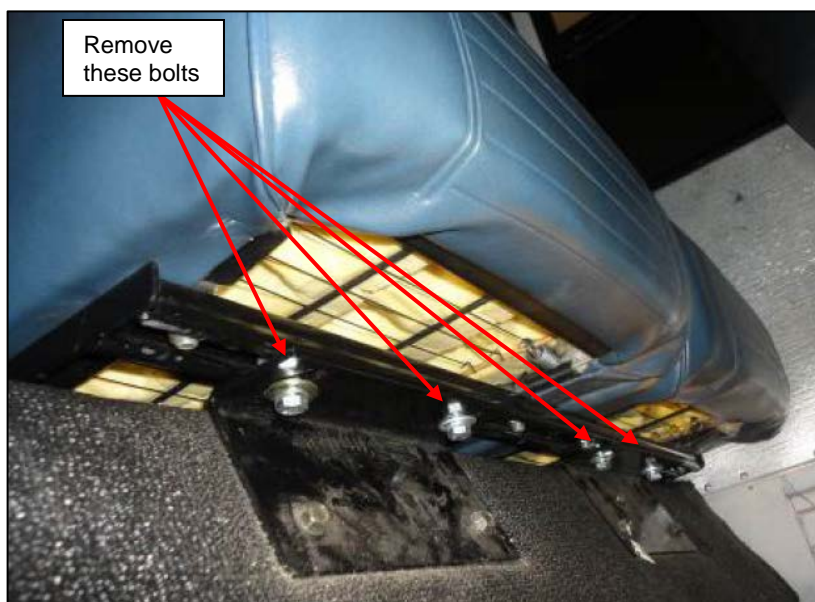


Figure 1: Bolt Location

3. Slide the seat assembly out from underneath the rear brackets.
4. Inspect for the seat belt anchor bar behind each davenport seat. See **Figure 2** for correct installation.
 - 4.1 If the seat belt anchor bar is not present, go to *Seat Belt Anchor Bar Installation* before continuing with this procedure.
 - 4.2 If the seat belts are attached to the seat belt anchor bar, the installation is correct. Go to step 12.
 - 4.3 If the seat belt is attached to the seat, the installation is incorrect. Go to the next step.
5. Turn the seat upside down and loosen all 9/16 in. nuts.

NOTE: Do not damage bolt threads; the bolts will be reused.

6. Remove the nuts, lock washers, and regular washers from each seat belt. A pry bar may be needed to separate the seat frame from the seat assembly in order to remove the belts.

Recall Campaign

February 2018

FL736AB

NHTSA #17V-314 School Buses

#17V-317 Non-School Buses

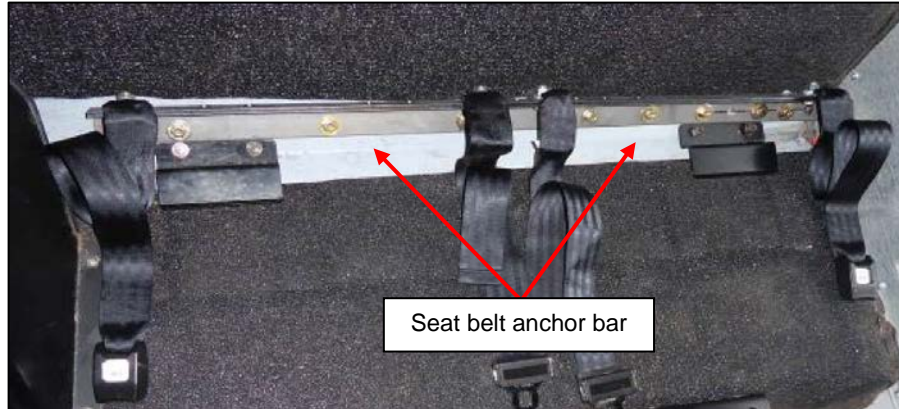


Figure 2: Seat Belt Anchor Bar

7. Using a 9/16 in. wrench, with the belts removed from the seat, install the nuts and washers removed in step 6.
8. Assemble the seats with the hardware removed in step 6.
9. Repeat steps 5-8 for the remaining set of seats.

NOTE: Each belt requires a 7/16 in. bolt with fine threads, nut, and washer to install on the seat belt anchor bar.

10. Install each belt to the seat belt anchor bar using the hardware from kit TBB 217213 (use 8 sets to anchor the seat belts), as shown in **Figure 3**.

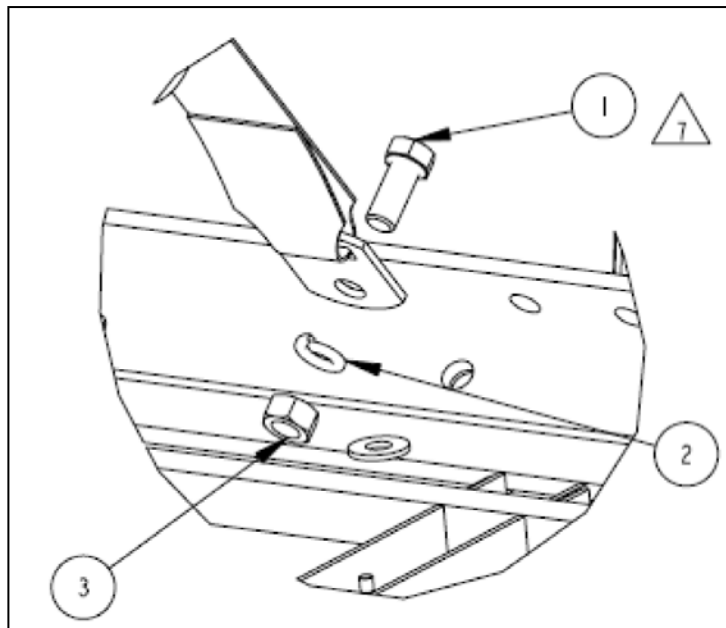


Figure 3: Installation of Seat Belts

11. Align the belt mount to the forward position and tighten the bolt and nut using a 5/8 in. and a 11/16 in. wrench until the lock washer is compressed and the assembly is tight.
12. Once all seating position belts are installed, extend the lap belts and lay them on the davenport shelf as shown in **Figure 4**.

Recall Campaign

Daimler Trucks
North America LLC

February 2018

FL736AB

NHTSA #17V-314 School Buses

#17V-317 Non-School Buses



Figure 4: Seat Belts Extended on Davenport Shelf

13. Install the seats using the 8 bolts removed earlier.

14. Place the lap belts on the seat and buckle as shown in **Figure 5**.



Figure 5: Belts Buckled on Seats

15. Remove the chocks from the tires.

February 2018

FL736AB

NHTSA #17V-314 School Buses

#17V-317 Non-School Buses

Seat Belt Anchor Bar Installation

NOTE: For the location of the seat belt anchor bar (TBB 183431) behind the davenport seats see **Figure 6**.

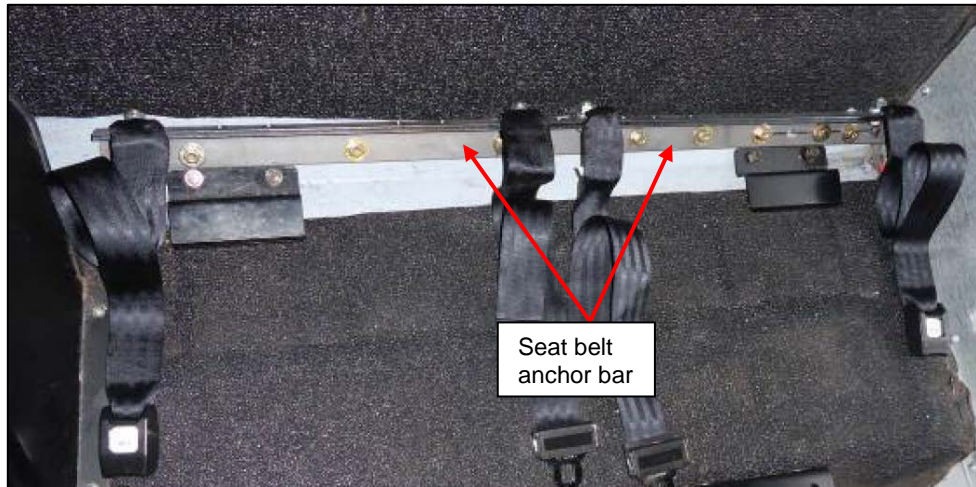


Figure 6: Location of the Seat Belt Anchor Bar

DRIVER'S SIDE INSTALLATION

1. Disconnect the battery.
2. Remove the air intake hose and hose retainers as shown in **Figure 7**. Retain all parts. Cover the air intake with a large towel to prevent contamination.



Figure 7: Removal of the Intake hose and hose retainers

3. Cut the seat belt anchor bar (TBB 183431) in half. Each half will have 8 holes.

Recall Campaign

Daimler Trucks
North America LLC

February 2018

FL736AB

NHTSA #17V-314 School Buses

#17V-317 Non-School Buses

4. Position the inside half of the seat belt anchor bar as shown in **Figure 8**. Use a grease pen to mark the location of each hole. (The bracket should sit on the two brackets that hold the rear of seats, with the 8 holes each against the davenport wall and the angle on top of the seat belt anchor bar.)

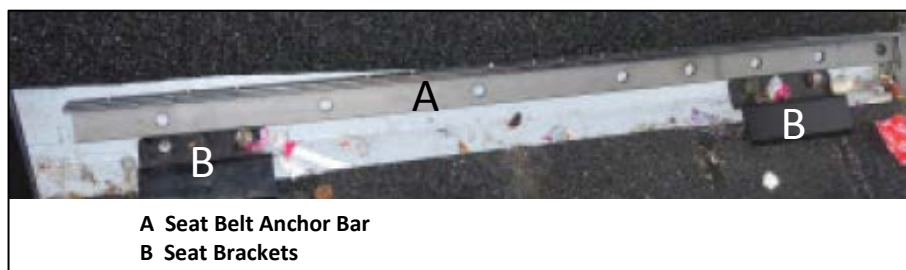


Figure 8: Seat Belt Anchor Bar Location on the Davenport

NOTE: When drilling through the davenport panels, there is insulation between panels which will wrap around the drill bit. Use a hot iron or soldering iron to melt any material in each hole. See **Figure 9**.

5. Using a 7/16 in. drill bit (use a 3/16 in. pilot bit first), drill the 8 marked holes. If there is not enough room to drill the hole adjacent to the side lining, add a hole between it and the next hole in the bracket.



Figure 9: Removing Davenport Insulation

6. Drill 2 holes at the top of the davenport support bracket (TBB 215942) so that self-tapping screws can be installed to hold the bracket in place.
7. Slide the davenport support bracket (TBB 215942) into place from the center of the engine compartment and align it with the davenport.
8. Using the 2 holes just drilled, mount the bracket with 2 self-tapping screws.
9. From inside the bus, use a 1/4 in. long drill bit to mark the location for the new holes by pushing down to the davenport support bracket and marking each hole by drilling slightly into it.

February 2018

FL736AB

NHTSA #17V-314 School Buses

#17V-317 Non-School Buses

10. Remove the davenport support bracket and use a drill press to drill 8- 7/16 in. holes all the way through the bracket as marked in step 9.
11. Remount the davenport support bracket with the 2 self-tapping screws. If the bracket does not allow the air filter canister cover to open properly, create a notch in the bracket wide enough so the cover can be removed when the ring is loosened. See **Figure 10**. This will require removing bracket from bus. Use of a cutting wheel is recommended.
12. Remount the bracket if needed and verify the canister cover can be removed.



Figure 10: Notch for air filter canister cover

13. Align the holes on the seat belt anchor bar and the davenport support bracket. Connect with a 3/8 in.-16Grade 8 bolt (TBB 69001943 or equivalent) and nut/washer combination (TBB 203867 or equivalent). Tighten to 12-14 lbf-lbs and apply red Loctite to the threads.
14. Remove the towel from the top of the air intake canister and verify that no dirt or other contaminants have gotten in. Clean if needed.
15. Install the air intake tube.
16. Review the installation to make sure no harnesses or parts rub.
17. Continue with *Curb Side Installation*.

February 2018

FL736AB

NHTSA #17V-314 School Buses

#17V-317 Non-School Buses

CURB SIDE INSTALLATION

1. Install the other half of the seat belt anchor bar (TBB 183431), cut in step 3 of *Driver's Side Installation*, as shown in **Figure 11**. Use a grease pen to mark 8 holes. (It should sit on the two brackets that hold the rear of seats with the 8 holes each against the davenport wall and the angle on top.)

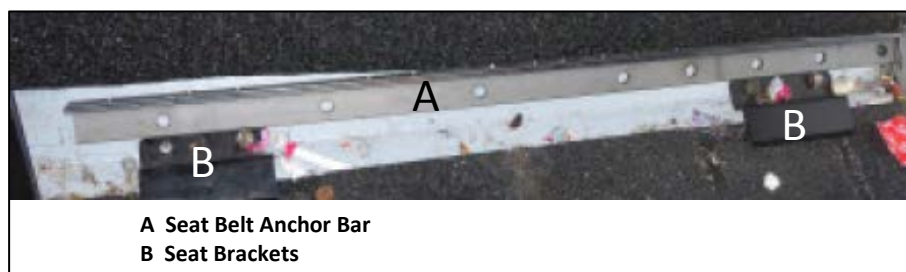


Figure 11: Seat Belt Anchor Bar Location on the Davenport

NOTE: When drilling through the davenport panels, there is insulation between panels which will wrap around the drill bit. Use a hot iron or soldering iron to melt any material in each hole. See **Figure 12**.

2. Using a 7/16 in. drill bit (use a 1/4 in. pilot bit first), drill the eight marked holes. If there is not enough room to drill the hole adjacent to the side lining, add a hole between it and the next hole in the bracket.



Figure 12: Removing Davenport Insulation

3. Unbolt the transmission dipstick from its mounting bracket as shown in **Figure 13**. Retain the parts.

Recall Campaign

Daimler Trucks
North America LLC

February 2018

FL736AB

NHTSA #17V-314 School Buses

#17V-317 Non-School Buses



Figure 13: Dipstick and Bracket

4. Remove the upper radiator shroud, see **Figure 14**. Retain the screws and shroud.



Figure 14: Upper Radiator Shroud

5. Remove the nut, flatten the bracket, then reinstall the nut as shown in **Figure 15**.

February 2018

FL736AB

NHTSA #17V-314 School Buses

#17V-317 Non-School Buses

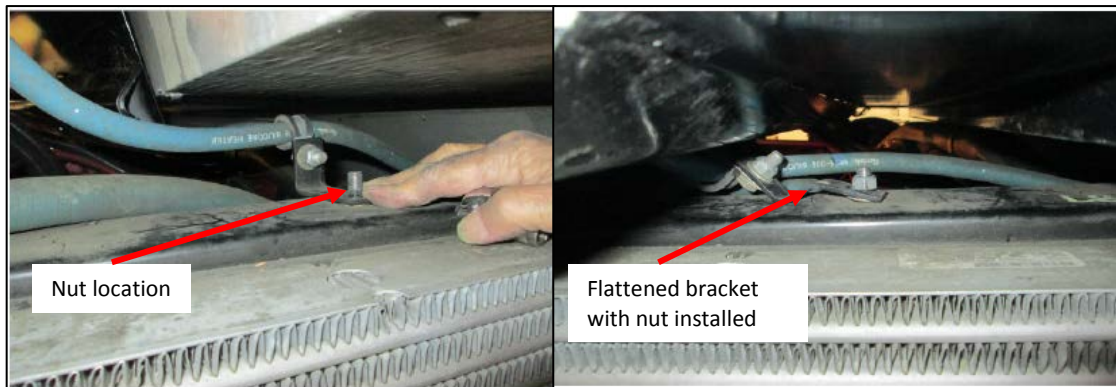


Figure 15: Nut and Flattened Bracket

6. Slide the davenport support bracket in from the center of the bus. Shim it up against the davenport so that it lies flat against the exterior of the davenport.
7. From inside the bus, use a 1/4 in. long drill bit to mark the location for the new holes by pushing down to the davenport support bracket and marking each hole by drilling slightly into it.
8. Remove the davenport support bracket and use a drill press to drill 8- 7/16 in. holes all the way through the bracket as marked in step 7.
9. Install the bracket against the davenport and shim as necessary.
10. Align the holes on the seat belt anchor bar and the davenport support bracket. Connect with a 3/8 in.-16Grade 8 bolt (TBB 69001943 or equivalent) and nut/washer combination (TBB 203867 or equivalent). Tighten to 12-14 lbf-lbs and apply red Loctite to the threads.
11. Install the radiator shroud using the fasteners previously removed.
12. Mount the transmission dipstick to the bracket with the parts previously removed, but this time flip the clamp 180 degrees so that it pulls the tube down away from the davenport support bracket. See **Figure 16**.

Recall Campaign

Daimler Trucks
North America LLC

February 2018

FL736AB

NHTSA #17V-314 School Buses

#17V-317 Non-School Buses

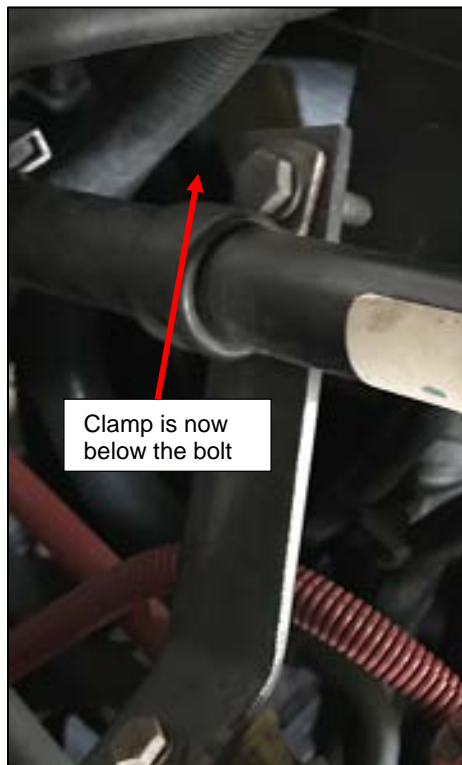


Figure 16: Dipstick Mounted Lower on the Bracket

13. Go to step 4.3 in *Seat Belt Inspection and Installation*.