

IMPORTANT SAFETY RECALL

Airstream Travel Trailer

NHTSA Recall Number 17V-155

Transport Canada Recall Number 2017-151

Problem

Airstream has determined that a defect which relates to motor vehicle safety exists in certain 2017 Basecamp Travel Trailers. The affected travel trailers covered in this recall have tires that can come in contact with the inner wheel well liner and fender. At maximum loading, the axle travel can permit the tire to contact the inner wheel liner. This contact could result in sudden tire failure which may result in loss of control increasing the likelihood of a crash.

RANGE OF VEHICLES INVOLVED:

2017 Airstream Basecamp Travel Trailers built between 9/08/2016- 3/09/17

Serial number range: **203001-204082**

Note: Because our VINs do not run in a contiguous series, there will be trailers in the VIN range that are not affected by this recall.

WARRANTY REIMBURSEMENT:

A notice of this recall has been sent to affected retail owners. A copy of the Owner's letter is included for your review. They may request that you complete the repair. If the unit and/or units are in your inventory, or if you are requested to perform the repair for the retail customer, please complete the advised repair and send in a warranty claim referencing this recall number for reimbursement. Please contact the **Airstream Warranty Department at 937-596-6111 Ext. 7401** and the parts will be sent at no charge. The customer has been made aware, via the owner letter, that there is at least a two week lead time on receiving axles.

FLAT RATES:

The time allowed for this repair is 1.75 hrs. per trailer. This includes the LP drop pressure test performed after replacement of the axle. The replacement of the 22.5° axle with the 10° axle will result in the hitch height increasing by 1 7/8" in. In retail-owned units that have the hitch already set up, the receiver may need adjusted. In those instances, Airstream will provide .75 hrs. for that adjustment. Airstream will also reimburse up to \$15.00 per tire for mount and balance charges for the new tires. Please use operation code **TTSBR836100** when submitting a claim for warranty reimbursement.

SERVICE ACTION:

Replace the axle on the trailer (which includes removing, re-installing and pressure testing the gas line), replace the tires with low profile tires, replace the spare tire with a low profile spare, and replace the Federal VIN Label and Tire Placard Label per enclosed repair procedure. The serial numbers of the new tires and spare will need to be recorded on the warranty work order when submitting for reimbursement.

Process:

Remove the existing 22.5°, 3500 lb. axle and replace it with the new 10°, 3500 lb. axle (**part # 410980-19**). Replace the existing 255/55R18 tires with the new 235/55R18 tires (**Part # 411062**). Replace the spare tire assembly (**Part # 411063**). Replace the weight label sticker on the side of the trailer.

Equipment needed:

- 13/16" Thin Wall Socket (for wheel lugs)
- 5/16" Socket and Wrench (for axle mounts)
- 11/16" Wrench
- Adjustable Wrench
- #20 drill bit
- Battery Drill
- Ratchet
- Torque Wrench
- 2 Jacks
- Spare Tire/Wheel Assembly, **Part # 411063**
- Wire Cutters
- Crimp Tool
- Air Impact (optional)
- SS 3/16 x 5/8 Rivets, **Part # 330031-01**
- Heat Shrink Butt Connectors
- Copper Line Cutter & Flare tool
- New 10 Degree Axle, **Part # 410980-19**
- Jack Stands
- 2 - 235/55R18 Tires, **Part # 411062**
- Weight Label Stickers

Step 1: Turn off the LP gas at the tanks. Using a 13/16" socket, break loose the wheel lug nuts. Jack up the trailer and place the trailer on jack stands so both wheels are off the ground. You can support the trailer with the jack stands just in front of the skid plate, as pictured below. The front can be supported by the hitch jack.



Step 2: Using a 13/16" thin wall socket (you can use an air tool for this if you wish), remove the lugs and tires. You will need to mount the new 235/55R18 tires (Part #411062) on the rims as well before putting them back on the coach. The serial numbers for the new tires will need to be recorded on the work order, so the information can be updated.



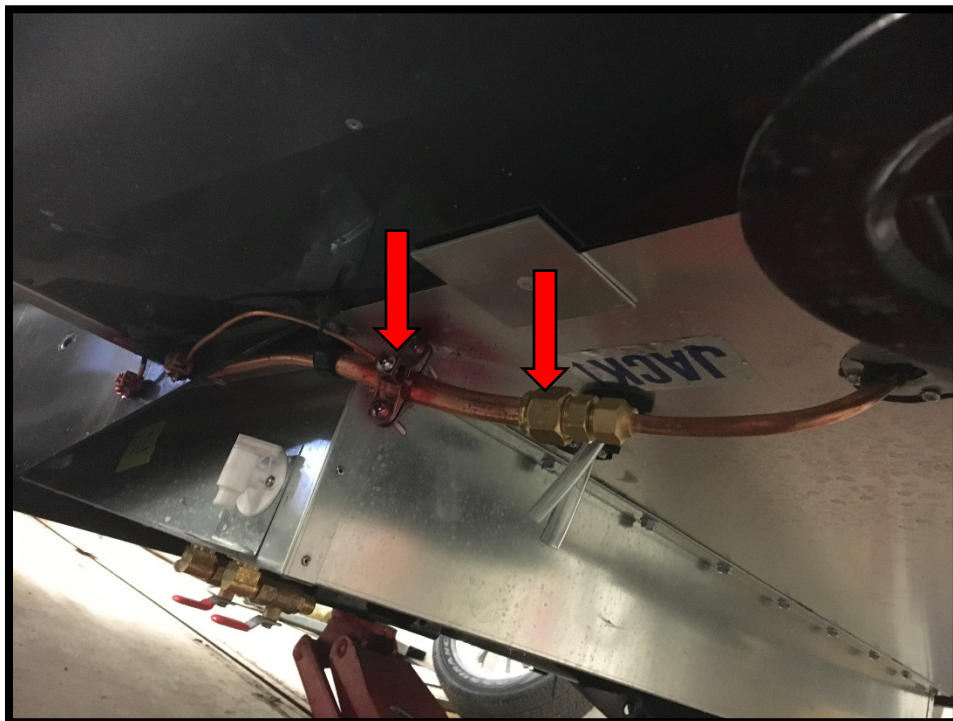
Step 3: Using a wire cutting tool, remove the zip ties securing the brake line to the axle. Cut the brake wires. You will see the black shrink tube on the wires, that is the best place to cut.



Step 4: You will need to remove the 5/8" gas line. Start first by removing for the sewer hose holder to gain access by taking out the four phillips-head screws on either end of the holder.



Step 5 : Disconnect the gas line connection on the roadside rear of the coach. A 13/16" wrench and an adjustable wrench can be used to disconnect. You will also need to remove the gas line ground lug.



Step 6: Pull flare nut on the 5/8" gas line back and using a copper line cutting tool, cut off the flare and slide the flare nut off.



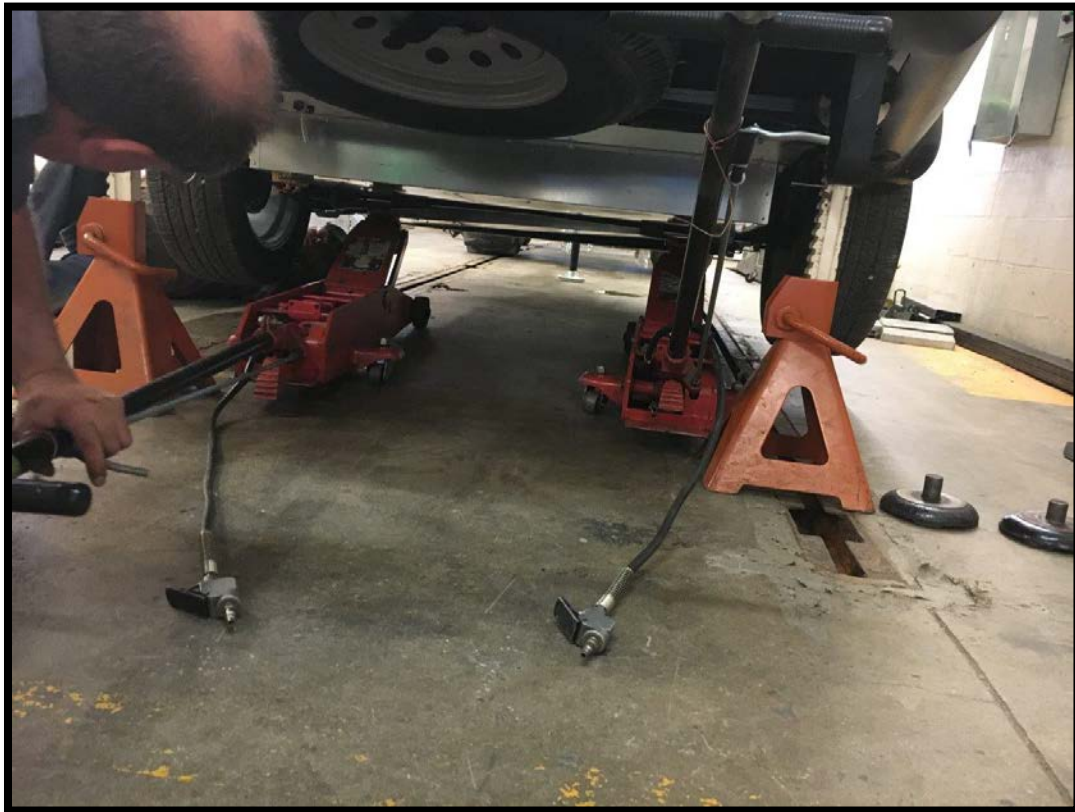
Step 7: Using an 11/16" wrench and an adjustable wrench, remove the front LP Gas line flare nut. Drill out the remaining rivets for the support straps on the LP line, using a #20 drill bit.



Step 8: Remove the line by pulling it toward the front of the coach, feeding it through the bracket above the axle. Set aside to be reinstalled later. If the 5/8" LP line is damaged or kinked on removal, you will need to replace it.



Step 9: Using 2 jacks, support the axle on both sides, as close to the ends as possible. Using a 5/16" deep well socket (you can use an air impact for this) and a wrench on the back side, remove the 4 mounting bolts for the axle. Lower the axle down with the jacks.



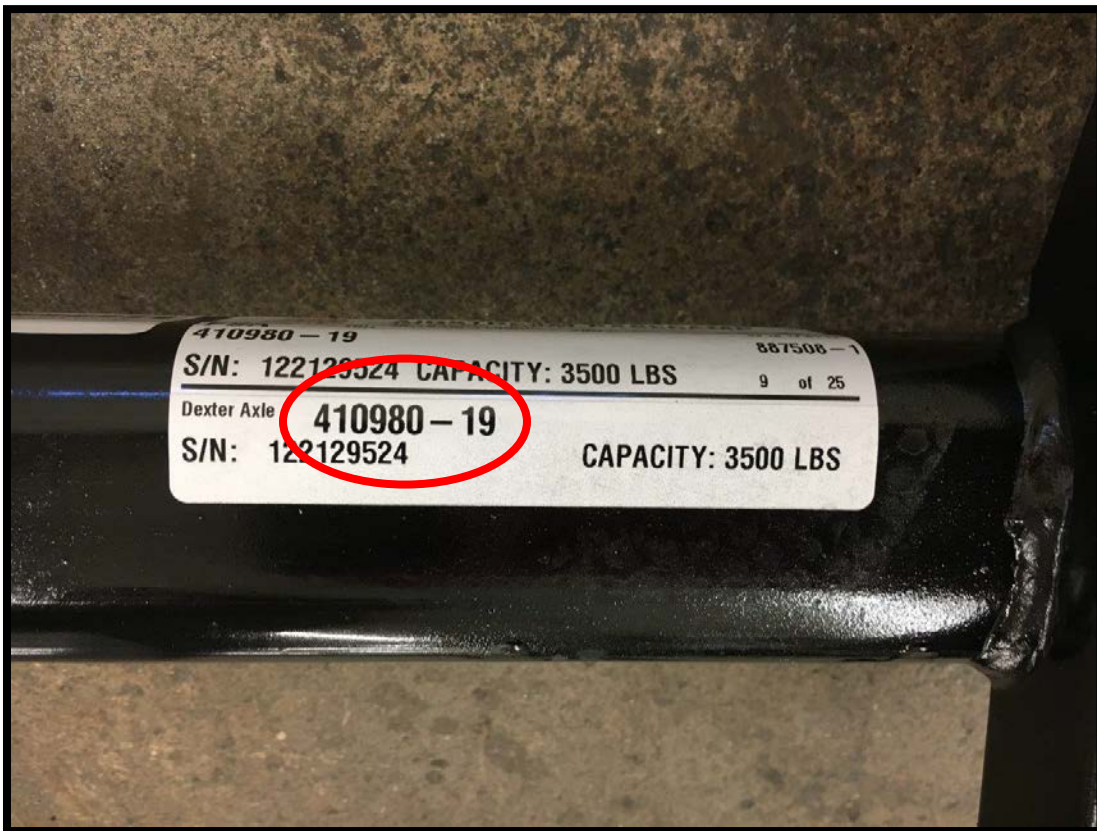


Outside

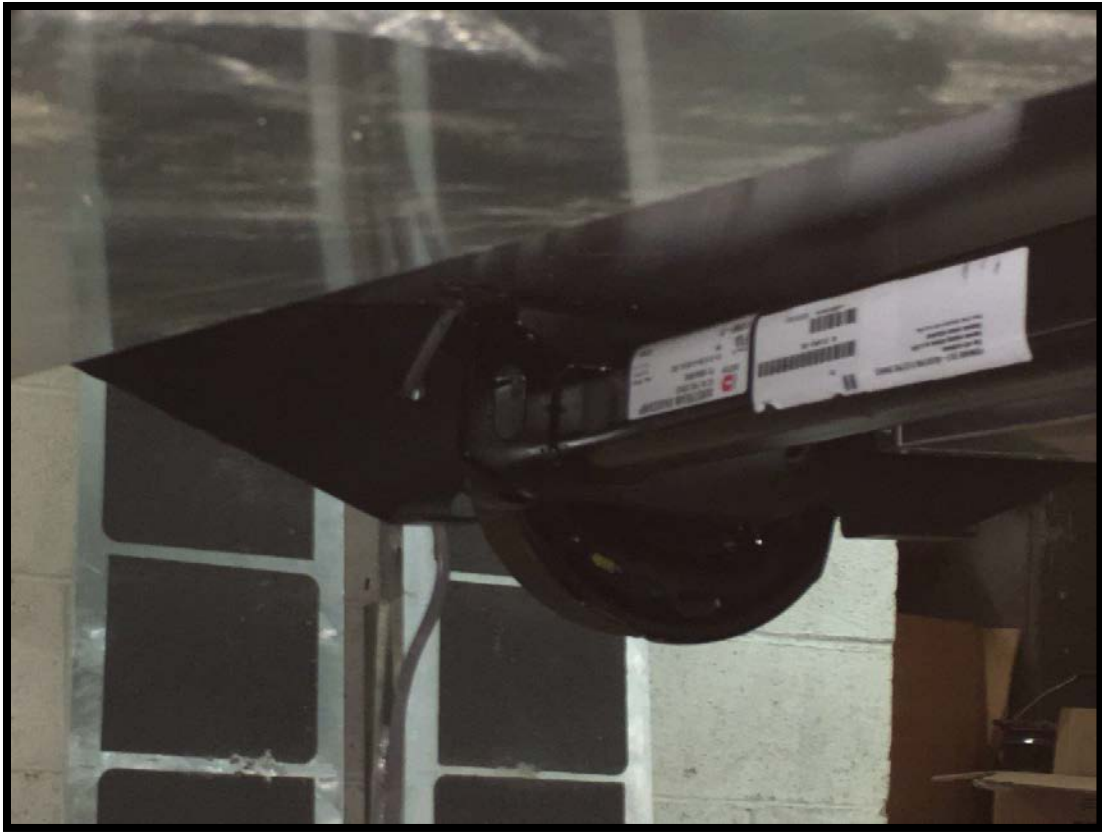


Inside

Step 10: Using the jacks, support the axle on both sides as close to the ends as possible. Raise the new axle to match up to the mounting brackets on the chassis. These should line up the same way as the previous axle.



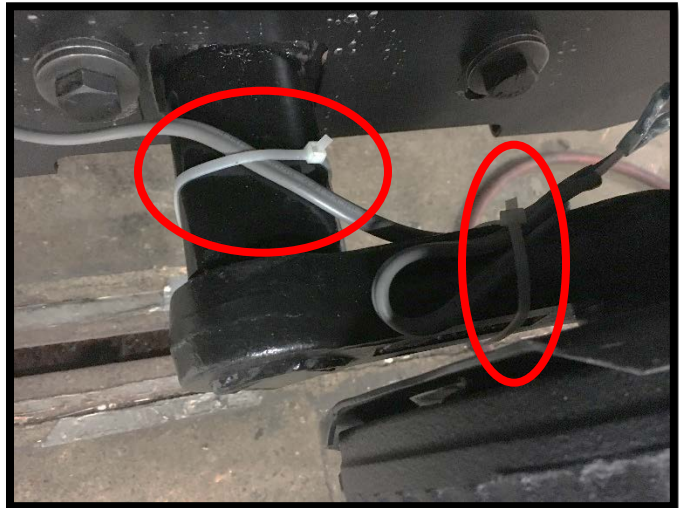
Note: Check the part number to verify you have the correct axle. The part number is 410980-19



Step 11: Mount the axle using the 5/16" mounting bolts. Make sure they are mounted the same way as the previous axle, at the upper most part of the slotted mounting hole, with two washers on the outside.



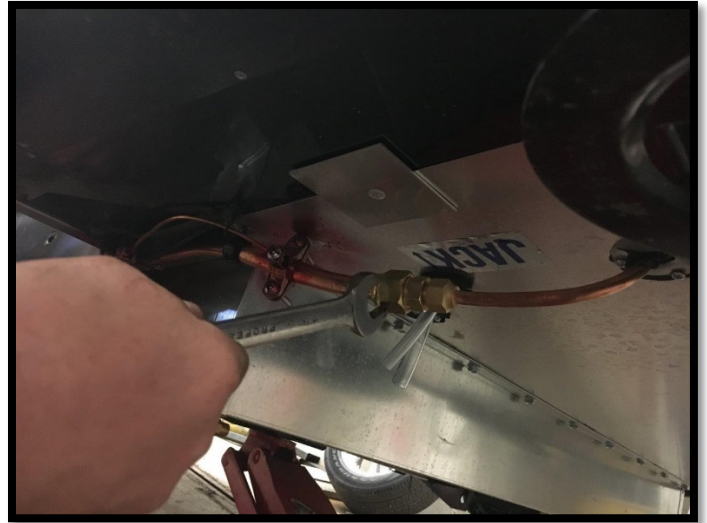
Step 12: Make sure the brake wire is fed through the hole with the grommet in the frame. Using butt connectors, connect the trailer brake wires to the new axle and heat shrink to protect the crimp. Secure the wire to the axle using zip ties.



Step 13: Re- install the gas line. You will need to route it through the area above the axle shaft and the bracket, shown in the picture below.



Step 14: Slide the flare fitting back onto the end of the gas line that was cut. Using a flare tool, flare the end of the line and connect the rear fittings of the LP line. Mount the support brackets using stainless steel rivets, reconnect the front fittings and the ground lug.



Step 15: Mount the wheels with the new 235/55R18 tires back on the coach. Lower the coach and using a torque wrench, torque wheels to 110 ft. lbs. Perform LP drop pressure test and check for leaks.



Note: This is how the axle will be situated in the wheel well upon completion. It is a 10° axle. As the load increases and the axle settles, the clearance front-to-back will become more even. It is designed to only shift forward when loaded or when going over bumpy road conditions.

Step 16: You will also receive a new ST205/75D15LRC spare tire/wheel combination that will need to be installed in the spare tire hanger in the rear underside of the Basecamp. It can be lowered by turning the winch nut, located on the exterior right below the rear door on the curb side, counter-clockwise using the spare tire wrench or $\frac{3}{4}$ " socket.



Step 17: Updated Federal VIN and Tire Placard labels will be provided and will need to be put on at this time. Clean the area with denatured alcohol and place the new stickers over the existing labels. These will be located on the roadside front portion of the coach.

