

SAFETY RECALL G04

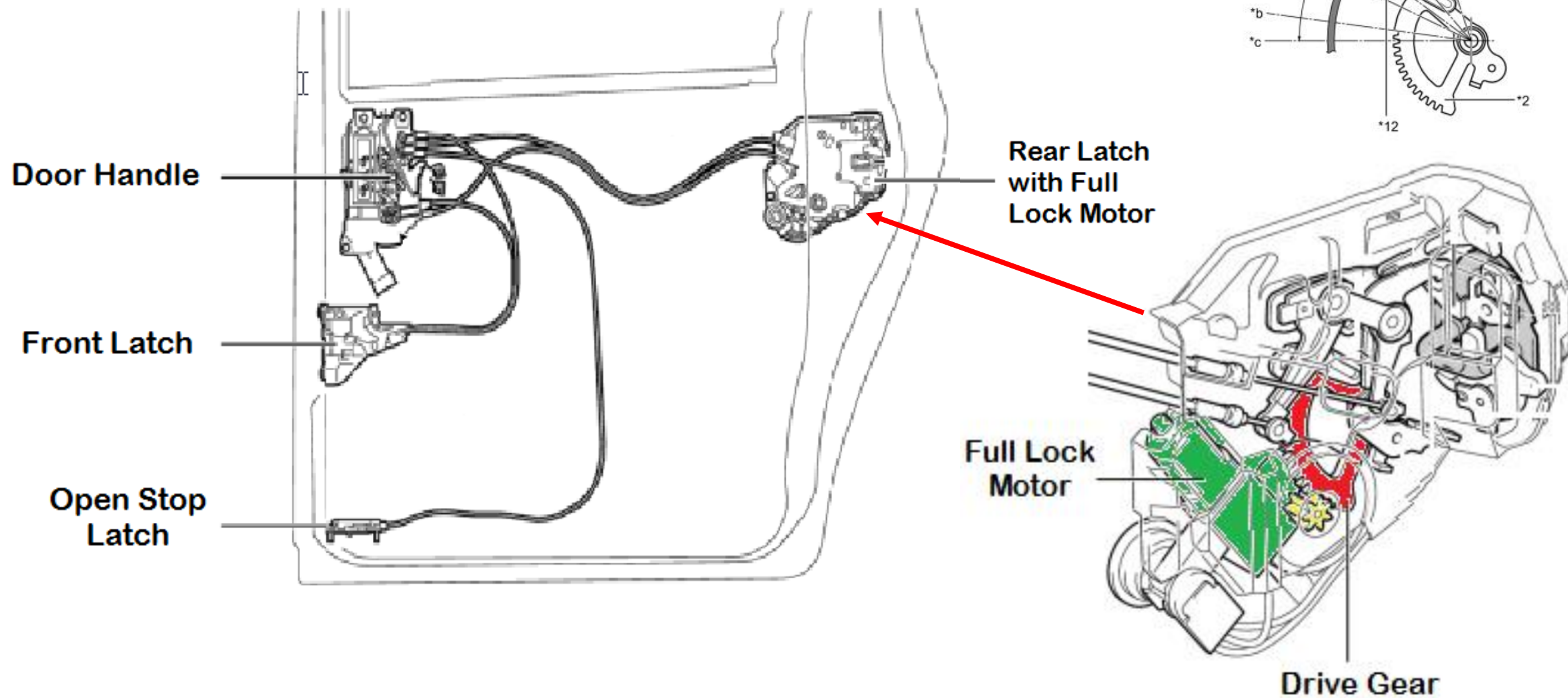
POWER SLIDING DOOR WIRE HARNESS
CERTAIN 2011-2016 SIENNA

Condition:

If the sliding door opening operation is impeded, the sliding door motor circuit could be overloaded, opening the fuse for the motor. If this occurs when the door latch is an unlatched position, the door could open while driving, increasing the risk of injury to a vehicle occupant.

(source: customer letter)

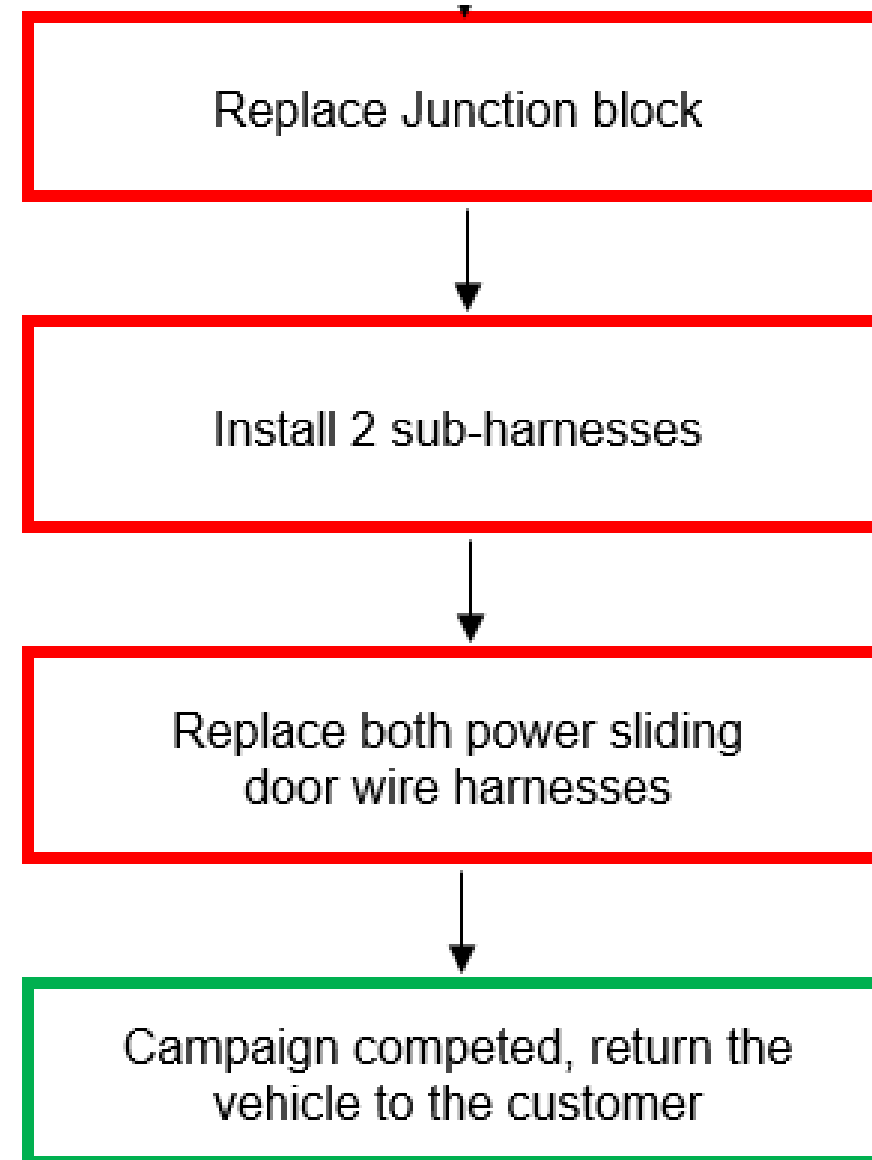
SLIDING DOOR LATCH OPERATION



Remedy:

Increase the amperage rating from 25 amps to 30 amps for each power sliding door.

25A → 30A



Required Parts:

1. Junction Block Kit:

- Junction Block
- LH sub-harness
- RH sub-harness _____ 2 kits available:
2011-2014 = 04007-04108
2015-2016 = 04007-03108
- 17 zip ties
- 6 Carpet Hooks

2. LH Door harness


3. RH Door harness

_____ 9 possible harnesses per side.

4. Owners Manual Stickers

_____ 2011-2014 models only

Parts Lookup Website:



TOYOTA
Let's Go Places

Safety Recall G04 Parts Lookup

Safety Recall G04 Parts Lookup

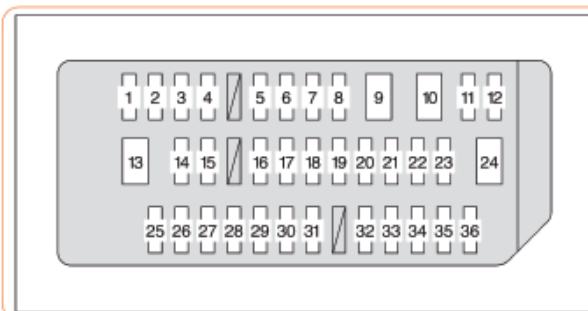
[Search Another VIN](#) | [Print](#)

Applicable Parts for VIN 5TDDK3DC9FS099165

Owners Manual Stickers for 2011-2014

	Fuse	Ampere	Circuit
16	4WD	7.5 A	Active Torque Control 4WD
17	AM1	10 A	Starting system
18	GAUGE NO. 2	7.5 A	Gauges and meters, multi information display
19	IG2	7.5 A	Automatic transaxle, multi port fuel injection system/sequential multi-port fuel injection system, SRS airbag system, front passenger occupant classification system, steering lock system, smart key system, starting system, fuel pump
20	PANEL	10 A	Air conditioning system, navigation system, front passenger's seat belt reminder light, audio system, steering switch, intuitive parking assist switch, personal/interior light main switch, shift lever light, headlight levering switch, power door lock main switch, clock, power quarter window switch, seat heater switch, emergency flashers, rear window defogger switch, vehicle stability control off switch, console box light, power slide switch light

Sticker 3



Sticker 1

	Fuse	Ampere	Circuit
6	ECU-IG NO. 1	10 A	Multiplex communication system, stop lights, navigation system, vehicle stability control system, Active Torque Control 4WD, intuitive parking assist, auto anti-glare inside rear view mirror, pre-collision seat belt, outside rear view mirror, seat heater, TPMS, yaw rate & G sensor, steering angle sensor, AUTO ACCESS SEAT, main body ECU
7	P/W RL	20 A	Rear power windows (left-side)
8	D/L	15 A	Power door lock system
9	P/SEAT FR	30 A	Power front seat (right-side)
10	PSD RH	30 A	Power Sliding Door (right-side)
11	P/W RR	20 A	Rear power windows (right-side)
12	P/W FR	20 A	Front power windows (right-side)
13	P/SEAT FL	30 A	Power front seat (left-side), driving position memory system
14	STOP	10 A	Stop lights, ABS, vehicle stability control system, rear combination light, high mounted stop light, automatic transaxle, shift lock system, multiplex communication system, power third seat switch, multiport fuel injection system/sequential multiport fuel injection system, trailer lights (stop lights)
15	P/W FL	20 A	Front power windows (left-side)

Sticker 2

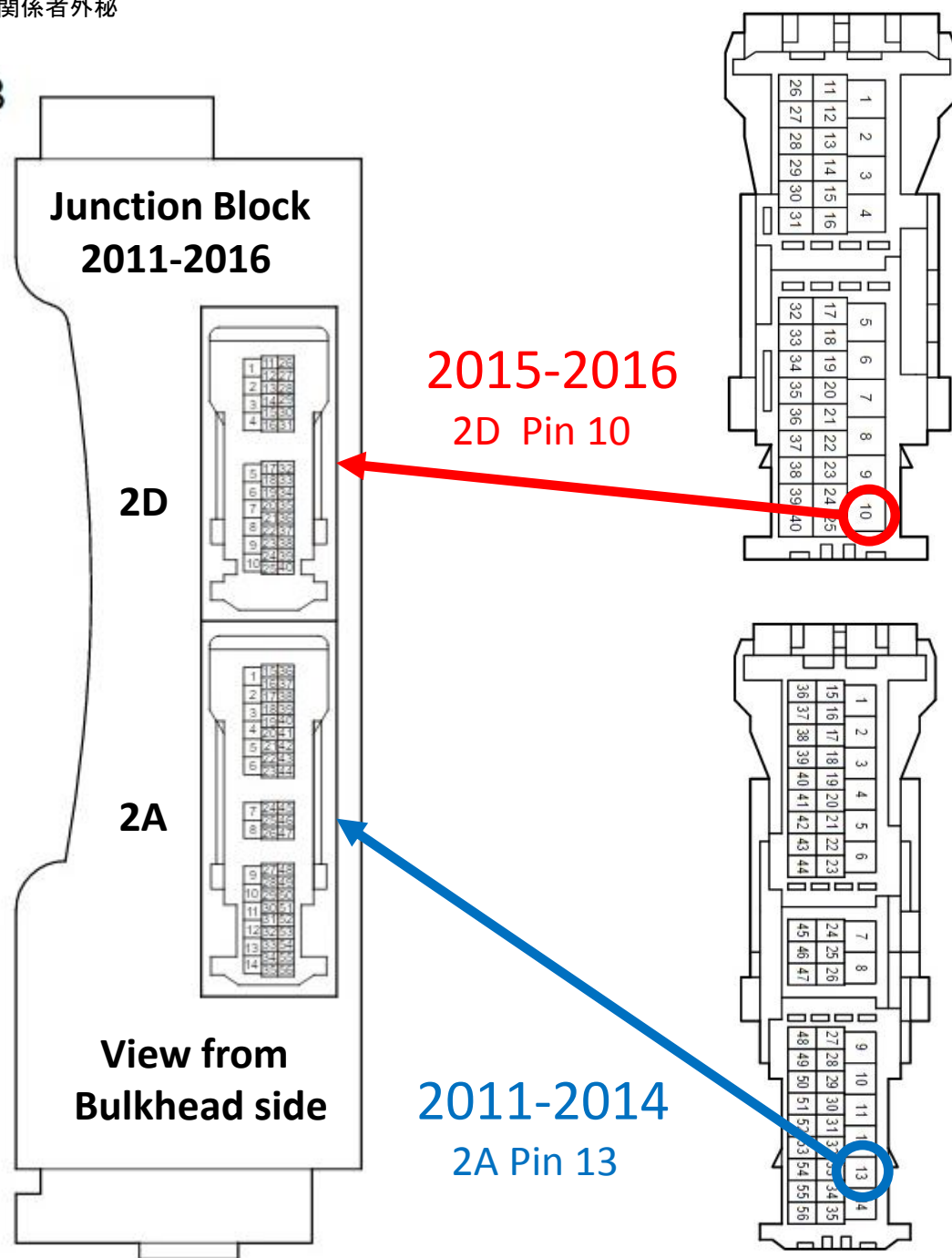
	Fuse	Ampere	Circuit
21	TAIL	10 A	Tail lights, trailer lights (tail lights), license plate light, rear combination lights
22	WIP ECU	7.5 A	Windshield wiper and rear window wiper
23	P/VENT	15 A	Power quarter windows
24	PSD LH	30 A	Power Sliding Door (left-side)
25	AFS	10 A	Automatic High Beam
26	WIP	30 A	Windshield wiper
27	WASHER	20 A	Windshield washer
28	WIP RR	20 A	Rear window wiper
29	WASHER RR	15 A	Rear window washer
30	HTR-IG	10 A	Air conditioning system
31	SHIFT LOCK	7.5 A	Shift lock system, multiport fuel injection system/sequential multiport fuel injection system
32	ECU-IG NO. 2	10 A	Pre-collision system, pre-collision seat belt, dynamic radar cruise control, electric power steering, rain-sensing windshield wipers, driving position memory system, power sliding door, power third seat, power back door, multiplex communication system
33	S/ROOF	30 A	Moon roof
34	OBD	7.5 A	On-board diagnosis system
35	S-HTR FL	15 A	Seat heater (left-side)
36	S-HTR FR	15 A	Seat heater (right-side)

Sticker 4

REQUIRED DISASSEMBLY



View B



TERMINAL REMOVAL & INSTALLATION OF SUB-HARNESS #7

(RIGHT REAR DOOR)



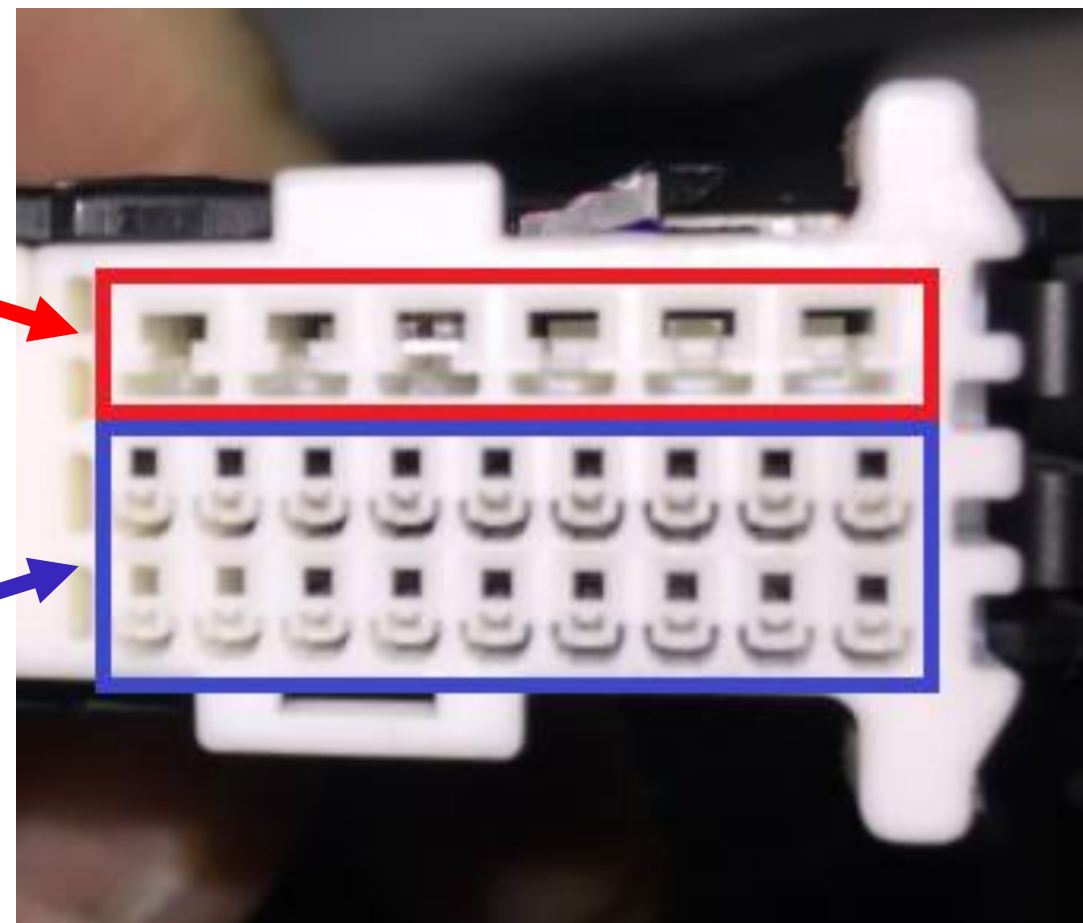
Be sure to identify the correct model year of the vehicle, using the VIN and not the production date. Making a mistake at this step will result in removing a power wire for a window motor.

TERMINAL REMOVAL TOOLS

1.5mm Terminals (required removal)



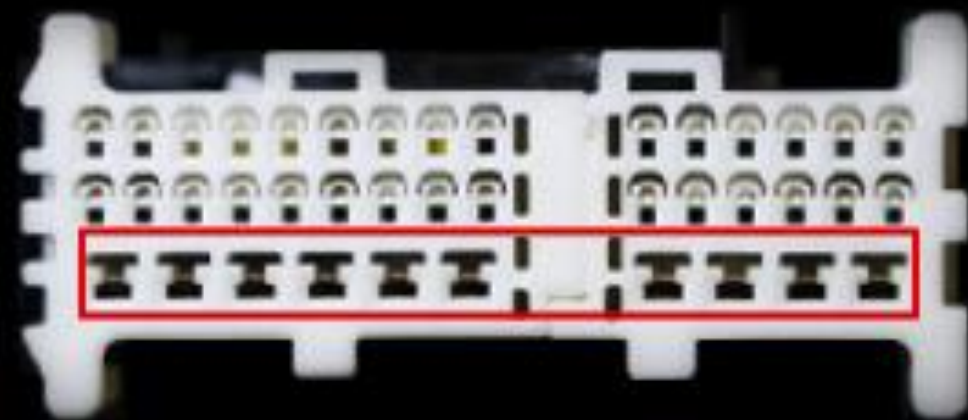
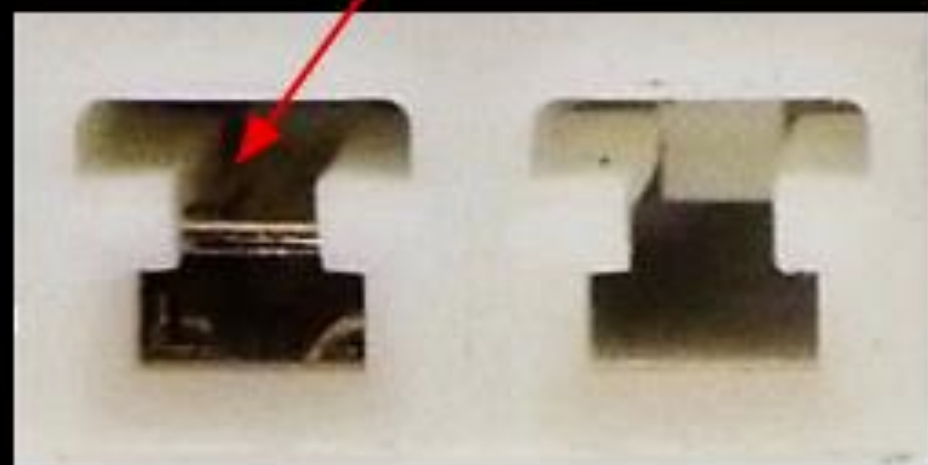
0.64mm Terminals (only if damaged)





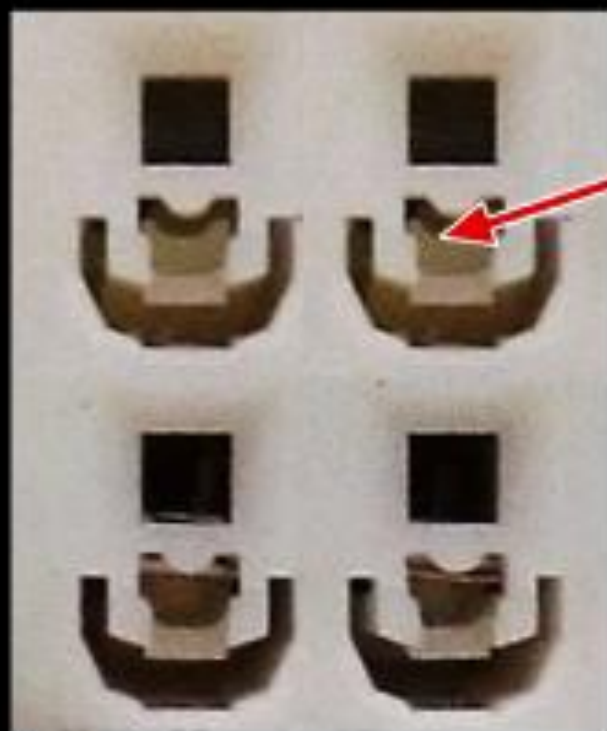
How to replace a 1.5mm female terminal

Insert tool here.





How to replace a 0.64mm female terminal



Insert tool here.

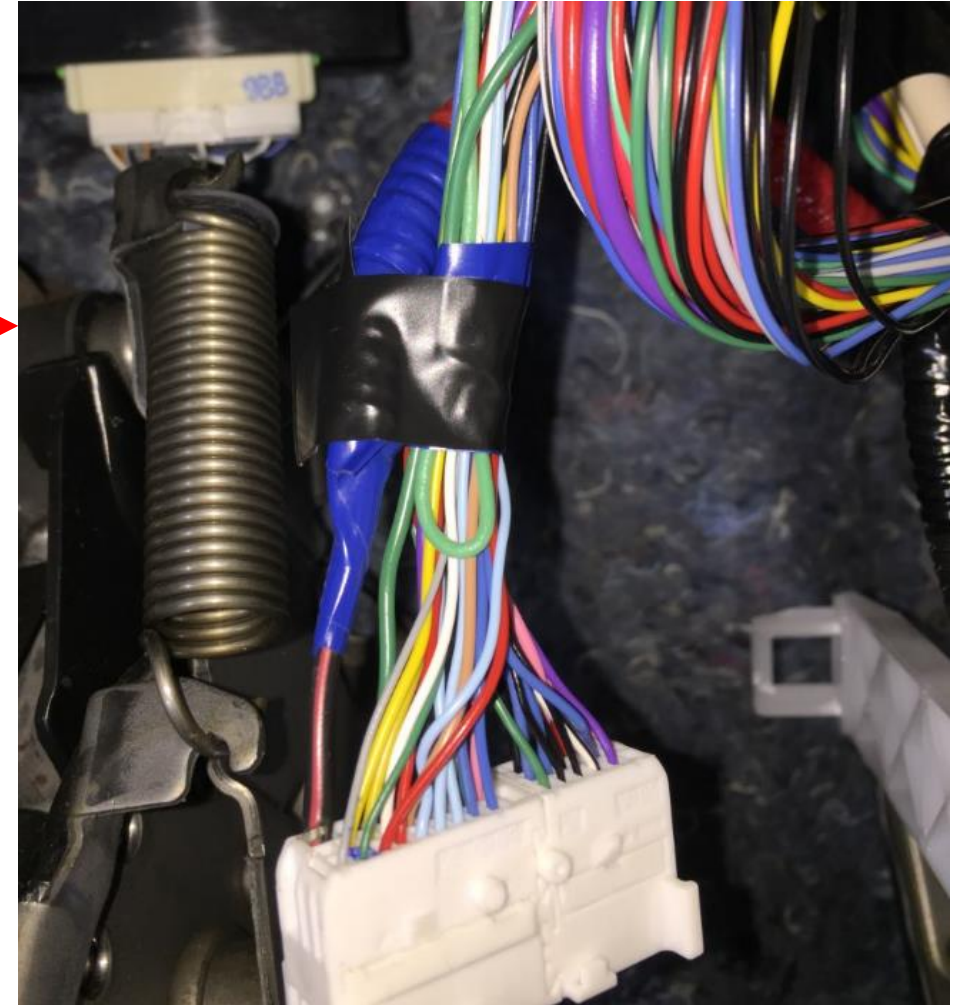


INSTALLATION OF SUB HARNESS #7

Cut terminal from existing wire



Install sub-harness #7 and electrical tape



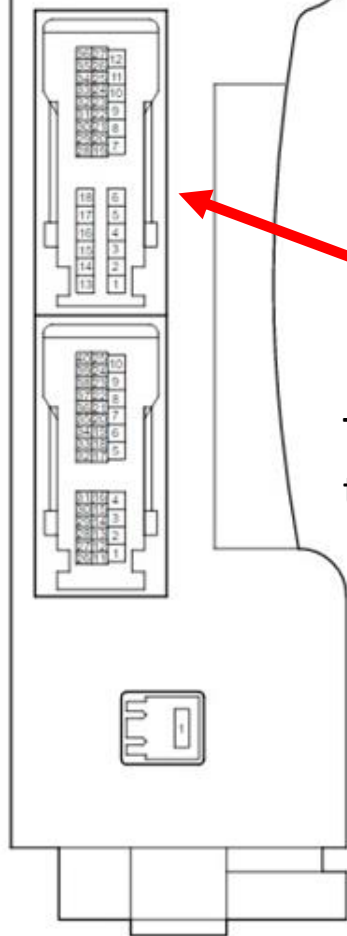
REMOVE BODY ECU FROM ORIGINAL JUNCTION BLOCK



INSTALLATION OF SUB-HARNESS #9 (LEFT REAR DOOR)

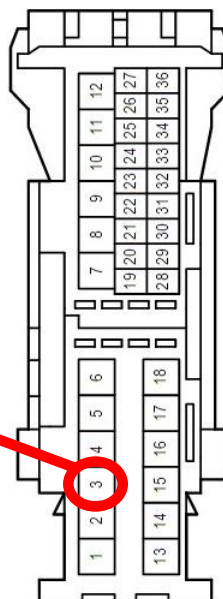
View A

Junction Block
2011-2016



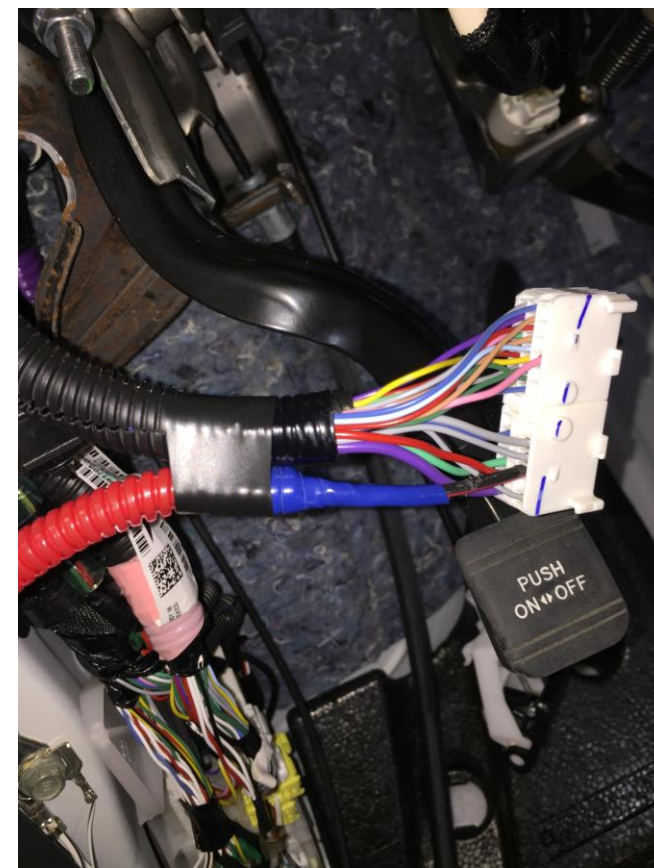
2011-2016
2H Pin 3

There is no existing
terminal in cavity #3.

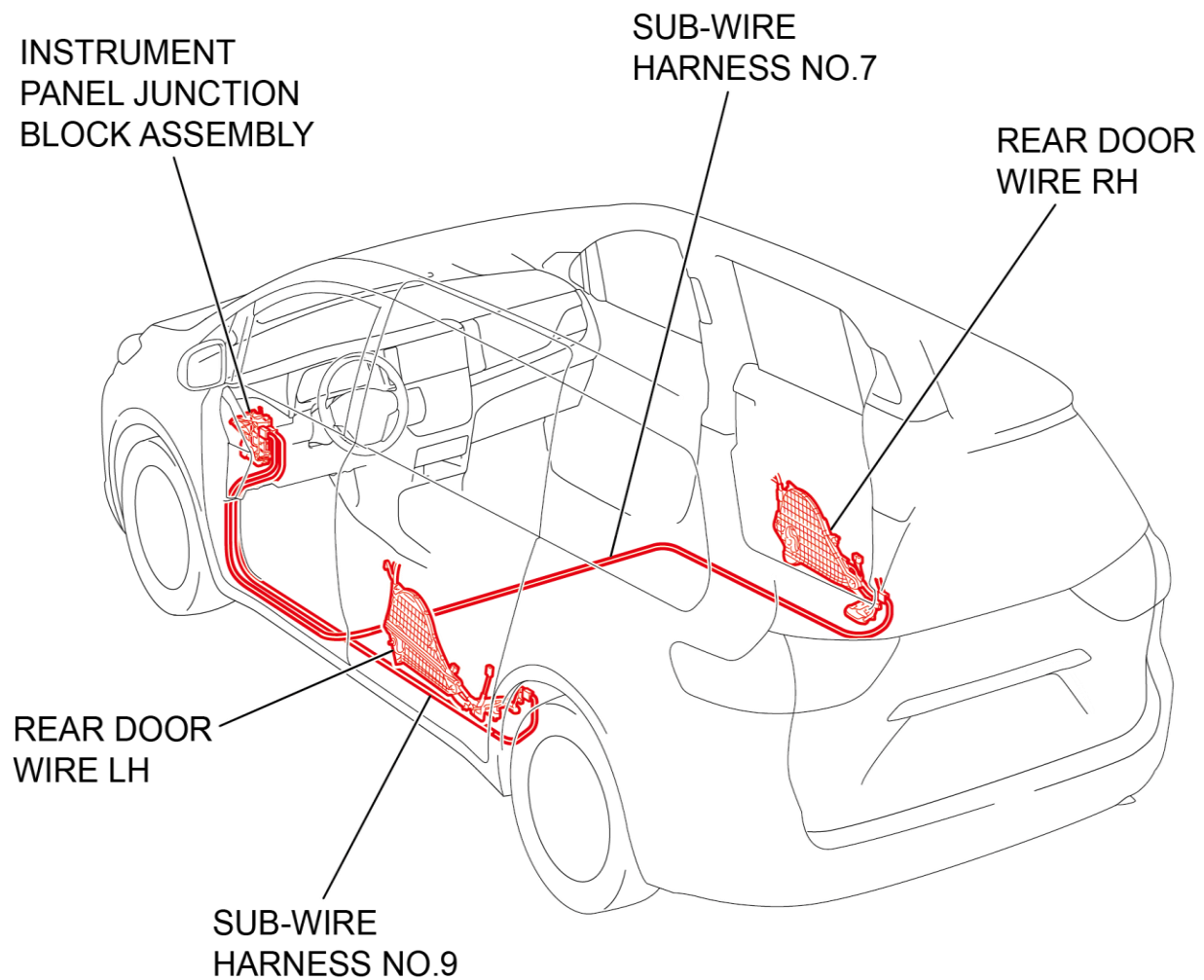


Be sure to identify the correct
connector, and install the NEW sub
harness into cavity #3.

View from drivers seat



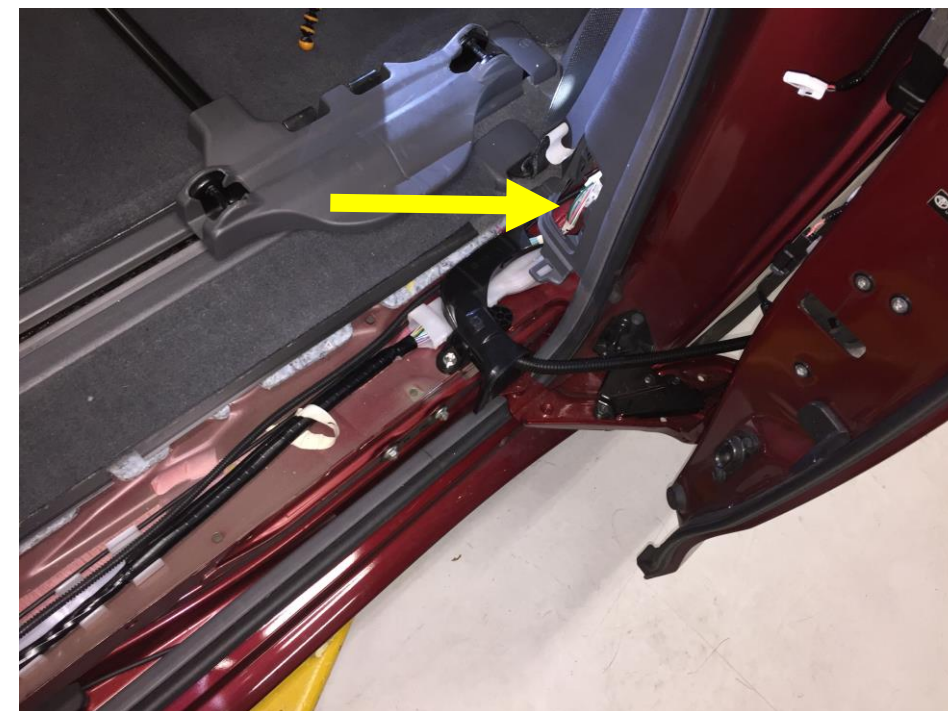
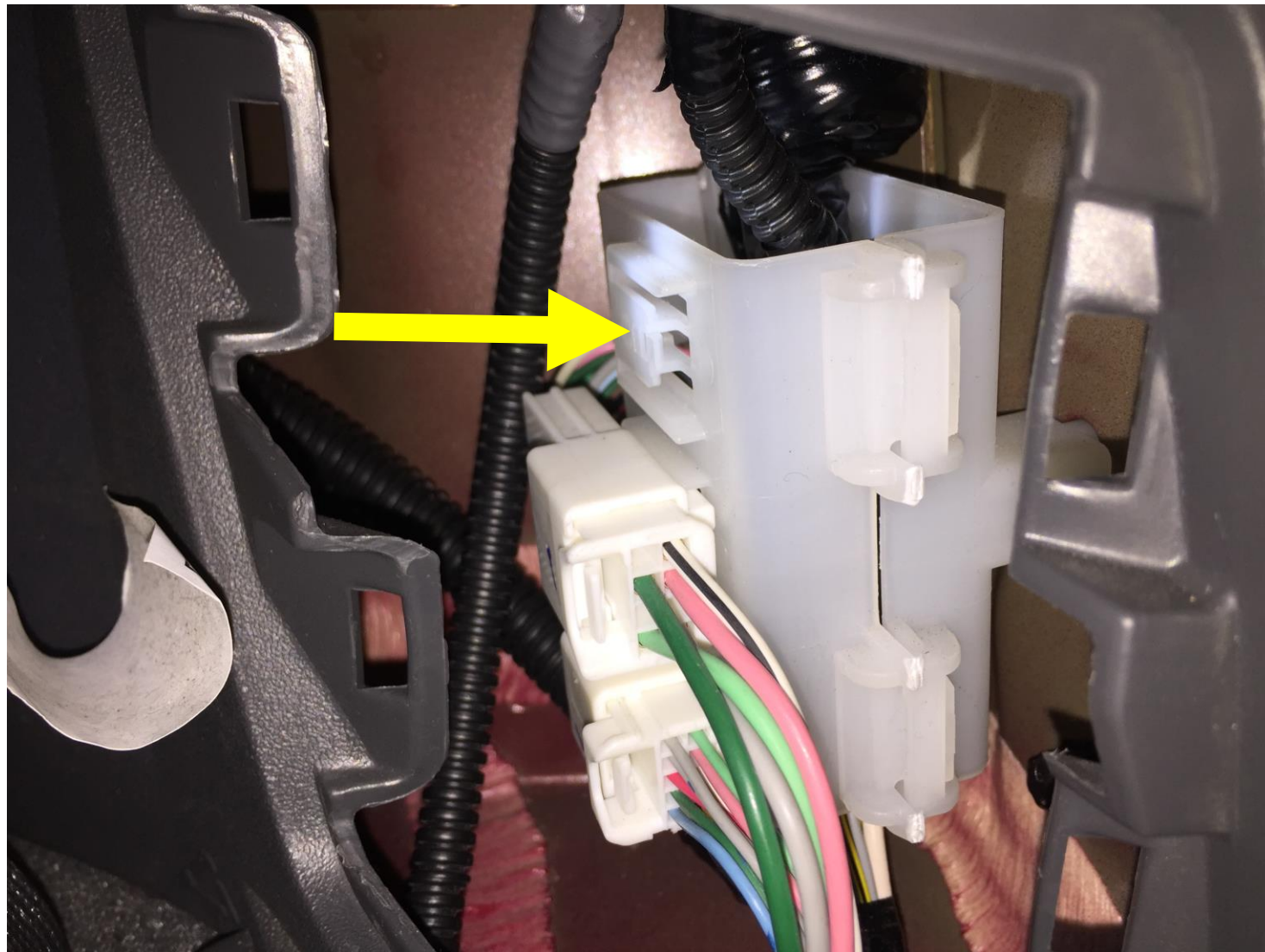
ROUTING OF SUB WIRE HARNESSES



S68004aS



OPEN MOUNTING POINT FOR SUB HARNESS CONNECTOR




REMOVAL OF SLIDING DOOR PANEL

POTENTIAL FOR
DAMAGE



Damage to the door panel can occur if removed improperly. Follow the procedure outlined in the video to prevent damage.

The image shows the interior of a vehicle, specifically the area around the sliding door. A large, light-colored plastic panel is visible, which is the sliding door panel. To the left, there is a metal frame and some wiring. The floor is covered with a grey carpet. The text "2011 - 2016 Sienna" is overlaid on the image.

2011 - 2016 Sienna

How to remove the sliding door panel
without breaking the upper-rear retaining hook

DOOR HARNESS REPLACEMENT



FINAL NOTES

1. Completion of this STS/FTS training course is a requirement to perform the Campaign. Each technician will receive class credit for the training. Course Code is SRG04.
2. Minimum certification requirements will be Certified Electrical.
3. Parts will be available for training vehicles. Training vehicles can include new or used in stock dealer units, but not customer cars.
4. Regions will need to provide VIN information to Compliance for MAC parts release. Parts will be shipped to dealership through the normal parts systems.