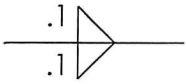


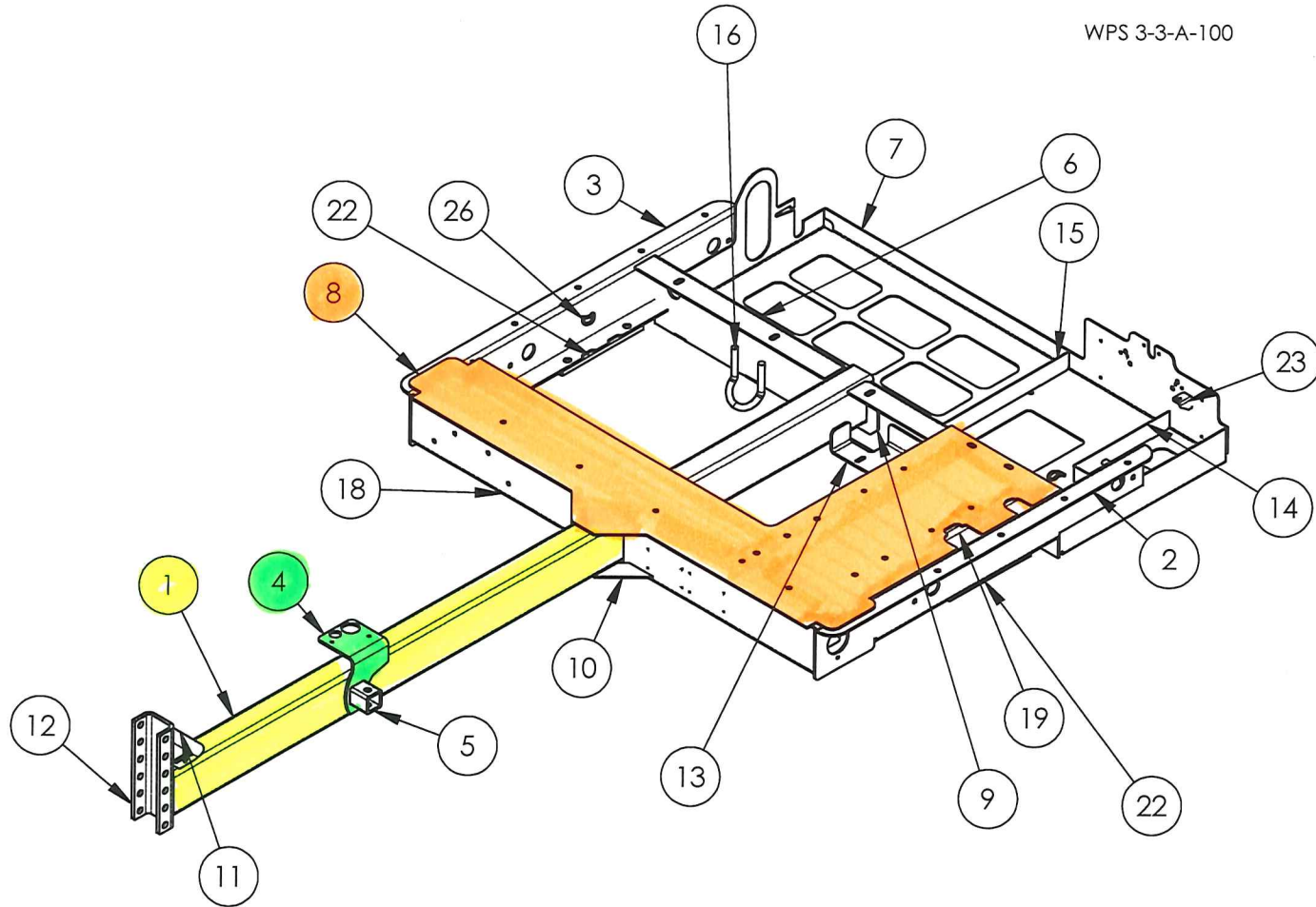
163733323

WPS 3-3-A-100

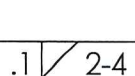
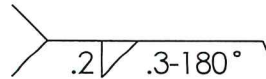


PLCS

6 WELDS

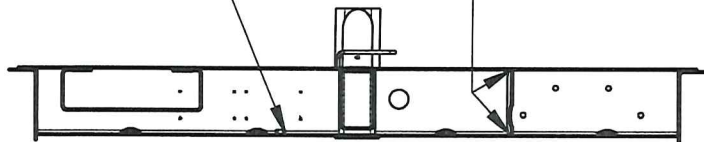


CS

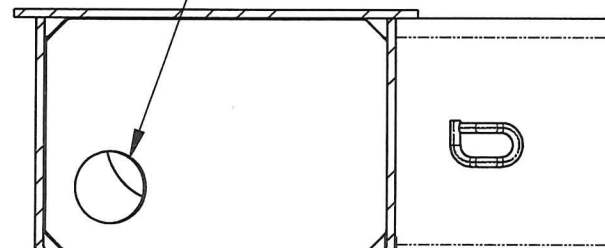


TYP. FOR 163674598 & 163674599

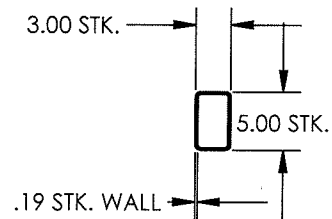
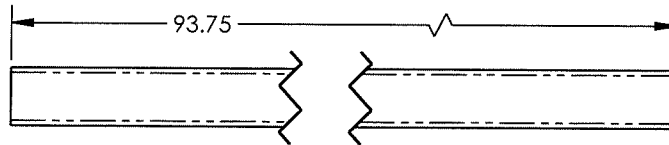
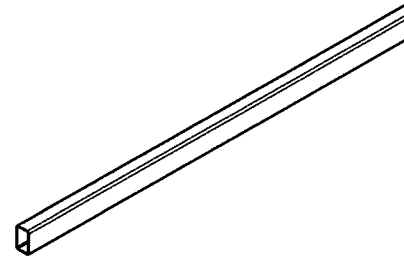
NOTE GUSSET HOLE ORIENTATION



SECTION D-D

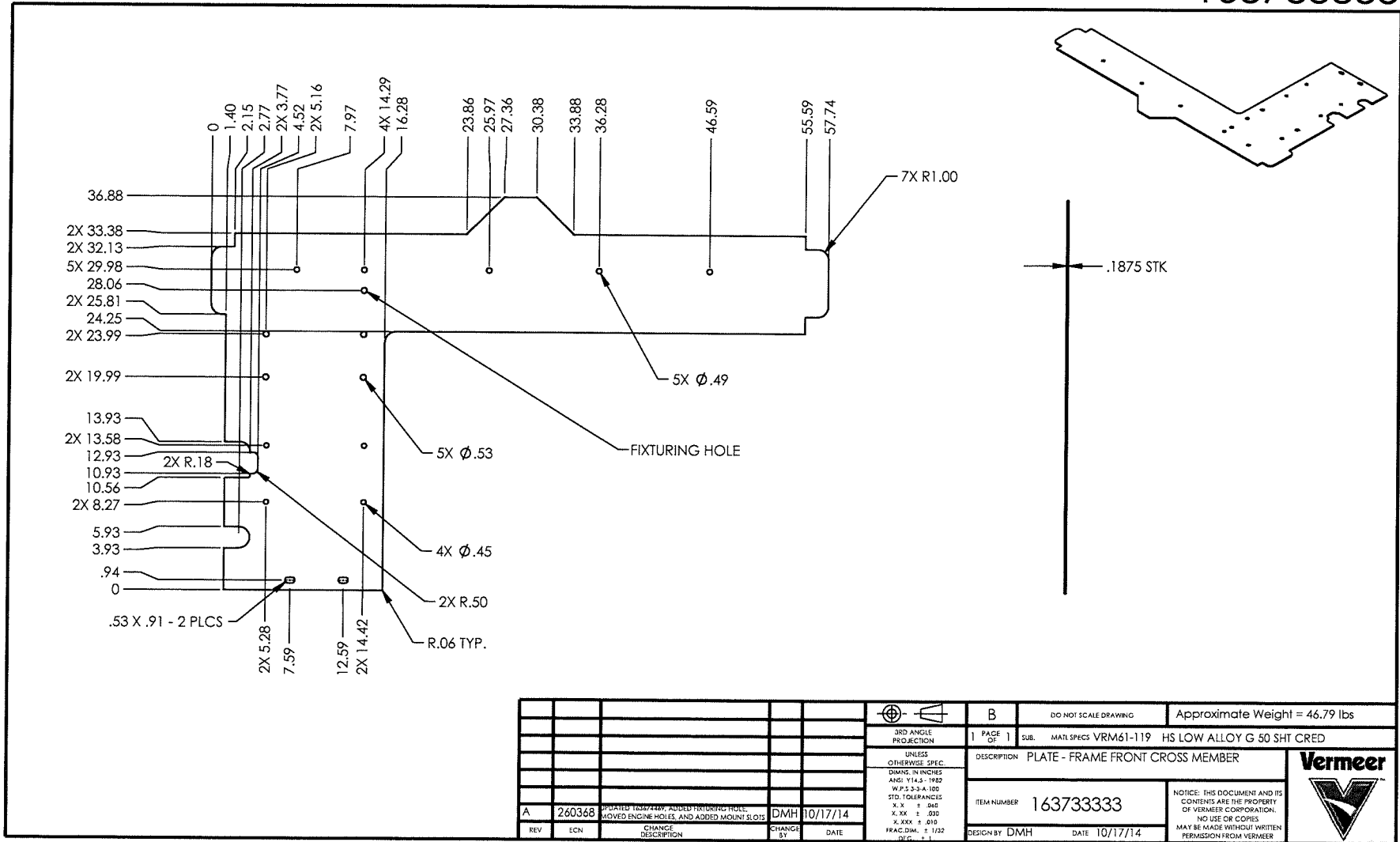



163674462



						A	DO NOT SCALE DRAWING	Approximate Weight = 72.927 lb.
					3RD ANGLE PROJECTION	1	PAGE OF 1	SUB. MAIL SPECS VRM61-200 CF STRUCT SHAPED TBG 46 KSI
					UNLESS OTHERWISE SPEC. DIMS. IN INCHES ANSI Y14.5 - 1982 W.P.S 3 - 3 - A-100 STD. TOLERANCES X.X ± .060 X.XX ± .030 X.XXX ± .010 FRAC. DIM. ± 1/32 DEC. ± .1	DESCRIPTION TUBE - TONGUE		
						ITEM NUMBER 163674462		
A	251634	PRODUCTION RELEASE	BJH	2/27/2012		DESIGN BY BJH DATE 11/7/2011		NOTICE: THIS DOCUMENT AND ITS CONTENTS ARE THE PROPERTY OF VERMEER CORPORATION. NO USE OR COPIES MAY BE MADE WITHOUT WRITTEN PERMISSION FROM VERMEER
REV	ECN	CHANGE DESCRIPTION	CHANGE BY	DATE				

163733333



				3RD ANGLE PROJECTION		B		DO NOT SCALE DRAWING		Approximate Weight = 46.79 lbs	
				UNLESS OTHERWISE SPEC.		1 PAGE 1		SUB. MATL SPEC: VRM61-119		HS LOW ALLOY G 50 SHT CRED	
				DRAWING IN INCHES		DESCRIPTION		PLATE - FRAME FRONT CROSS MEMBER			
				ANSI Y14.5 - 1982		ITEM NUMBER		163733333			
				W.P. 2-3-A-100		DESIGN BY		DMH		DATE	
				STD. TOLERANCES		DATE		10/17/14		NOTICE: THIS DOCUMENT AND ITS CONTENTS ARE THE PROPERTY OF VERMEER CORPORATION. NO USE OR COPIES MAY BE MADE WITHOUT WRITTEN PERMISSION FROM VERMEER.	
				X.X ± .045							
				X.XX ± .030							
				X.XXX ± .015							
				FRAC.DIM. ± 1/32							
				DEC. ± .1							
A		260368		UPDATED 10/27/14; ADDED FIXTURING HOLES, MOVED ENGINE HOLES, AND ADDED MOUNT SLOTS		CHANGE BY		DMH		DATE	
REV		ECN		CHANGE DESCRIPTION		CHANGE BY		DATE			

Frame
Fig 02-01

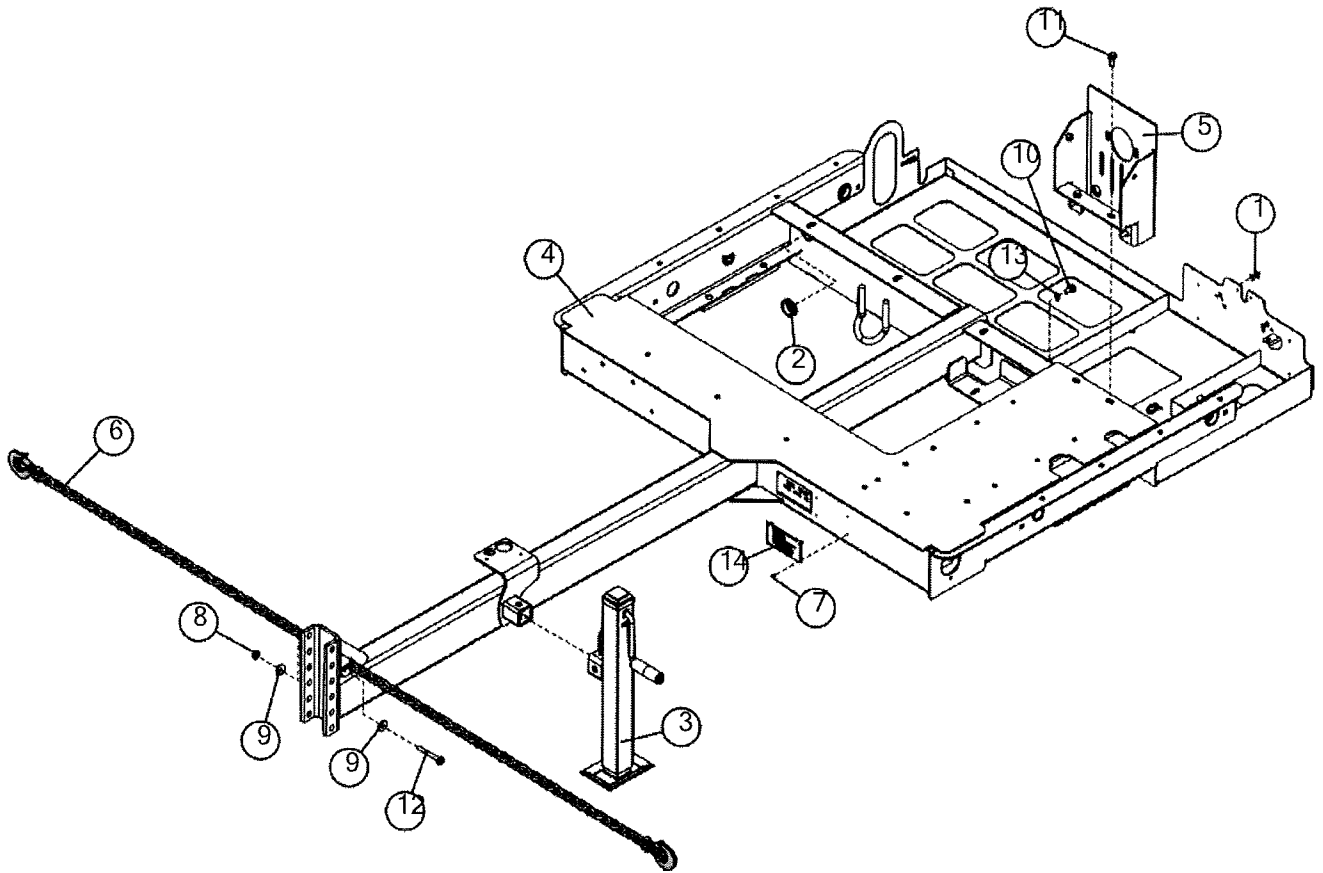


Illustration No. 163733322- Not For Ordering

Frame
Fig 02-01

REF NO.	PART NO.	DESCRIPTION	QTY.	REMARKS
1	126100001	LICENSE PLATE FASTENER W/SCREW	2	
2	163674549	GROMMET-SYM-1.25ID-1.88OD-.19GW-1.63GD	8	
3	163677931	JACK-5000# SIDEWIND	1	
4	163733323	FRAME - BC900 WELDMENT	1	
5	163733371	WELDMENT - HYD. PUMP MOUNT	1	
6	180008820	CHAIN 5/16 SAFETY WITH CLEVIS HOOK	2	
7	296287592	POP RIVET - 1/8 INCH STAINLESS STEEL	8	
8	507085010	NUT-HEXFLNG LOCK, M10-1.50,10.9,YZ,D6927	1	
9	507086010	WASHER-FLAT,M10,LARGE RIM,DIN9021	2	
10	507612020	SCREW-HFS,M10-1.50X20,10.9,YZ,ANSI,B18.2.3.9M,FT	1	
11	507612025	SCREW-HFS,M10-1.50X25,10.9,YZ,ANSI,B18.2.3.9M,FT	4	
12	507612080	SCREW-HFS,M10-1.50X80,10.9,YZ,ANSI,B18.2.3.9M,PT	1	
13	508483010	WASHER,EXT SERRATEDLOCK,M10,ZP,DIN6798A	1	
14	7000F679	DECAL-EMISSION CONTROL	1	