

DOORS

NOTE: All steps of the installation must be performed with the door assembly in the closed position.

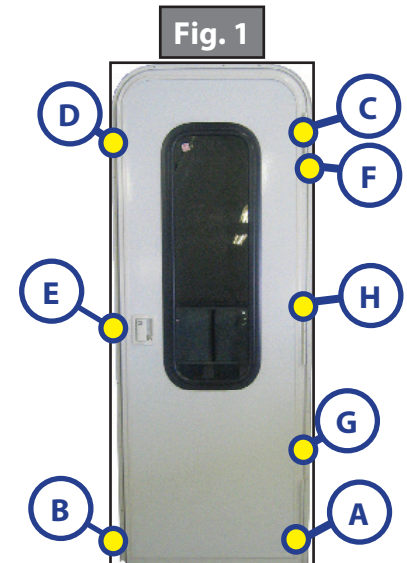
NOTE: Spacer blocks come installed in the assembly and hold the door in the frame to remain properly spaced.

1. Verify size of door opening to be correct. Door "call" size is the required rough opening size. The actual door size will be undersized by 1/2" in width and height.
i.e. 26" x 72" door requires an opening of 26" x 72," and the actual door size will be 25 1/2" x 71 1/2."
2. Install sealant tape around back side of screw track frame. LCI recommends Butyl or thin profile foam tape.
3. Set door in wall opening, with deadbolt engaged, so that the bottom edge sits flat on the floor and center the door in the opening.

NOTE: Make sure when the door is placed in the opening, that it is centered. If the door is offset to the latch side, the plunger may hit the side wall framing and not engage completely.

NOTE: Excessive butyl tape, foam, etc that is in the plunger opening may restrict full engagement of the latching mechanism.

4. Install first screw in the bottom screw hole nearest the bottom hinge (Fig. 1A), and the bottom screw hole on the latch side (Fig. 1B).
NOTE: After screws A and B are installed verify the bottom of the door is flush with the bottom of the outer frame to ensure spacer blocks are present. If the door is hanging down, open the door carefully (ensuring the door does not tip out) and install a spacer block and continue with install.
5. Install the third screw in hole near the top hinge (Fig. 1C).
6. Be sure door sets evenly in the frame and that the frame on the latch side is parallel and spaced properly with the hinge side. Install screw in screw hole (Fig. 1D).
7. Next install remaining 4 screws near latch in alphabetical order (Fig 1E - G).

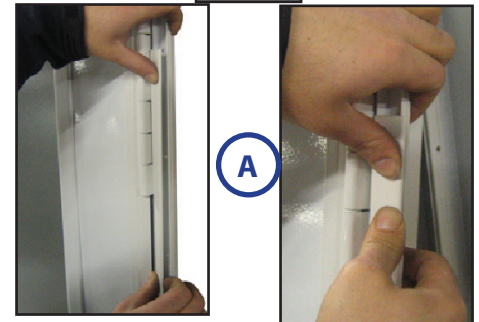


DOORS

NOTE: Screws must be installed on the latch side of the door straight or at a slight outward angle. Screws installed at an inward angle will cause the door frame to twist and may prevent the door from opening properly. This can also result in latch damage.

8. Install remainder of the screws making sure all mounting holes are used.
9. Install "Snap Trim." Snap trim is installed from the outside in. Match the long leg of the Snap Trim to the long leg of the Door Frame (Fig. 2A & 3A).
10. Install Drip Cap overlapping the screw cover using predrilled hole locations (Fig. 2A).
11. Run a bead of sealant on bottom of threshold (Fig 4A) along the entire width of the door, taking care not to leave any seal voids at the corners (Fig. 4B & C).

Fig. 2



Snap Trim Part #s

Part Number	Description
198413	White
204636	Mill
204637	Black
204638	Stone
277528	Aztec Gray
277531	Champagne
291082	Sky Gray
293093	Silver
298887	HL Cream
314195	Taupe

Fig. 4

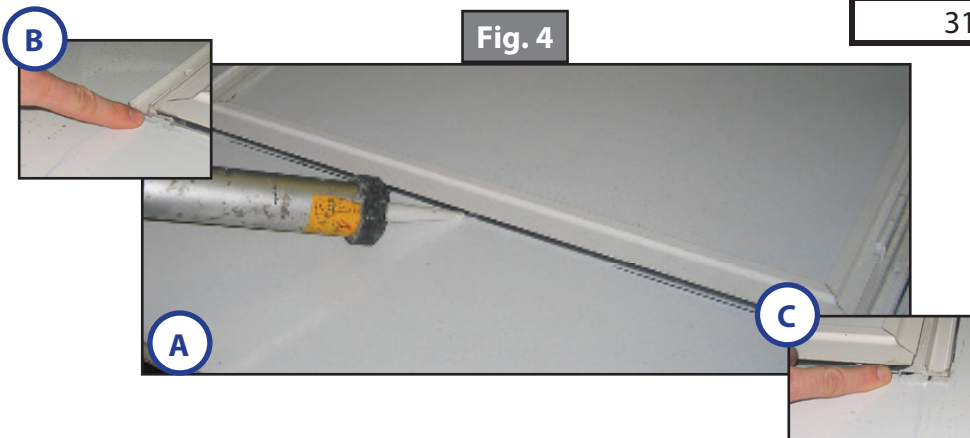


Fig. 3

