



Recall Service Bulletin



DATE: 4-6-16

APPLIES TO: This Recall service bulletin applies to certain SB incomplete school bus chassis built by Spartan Motors USA, Inc. between March 19, 2015 and November 9, 2015.

NHTSA/TC Id: 16V-134

CONDITION: A clip component on the park brake cable may fail causing a failure of the parking brake system.

CORRECTION: Replace connector clip

LABOR ALLOCATION: .5 hrs.

CLASSIFICATION: V3

PARTS NEEDED:

<u>QTY</u>	<u>Part Number</u>	<u>Description</u>
1	S-2530-001B	Service Kit-Replacement Brake Cable Connector Clip

Kit # S-2530-001B Contains:

<u>QTY</u>	<u>Part Number</u>	<u>Description</u>
1	82100600	Connector Clip
1	RSB16-320-001A	Instruction Document
1	RSB16-320-002	Instruction Document

GENERAL INSTRUCTIONS:

Thoroughly review entire service bulletin before starting work. If there are questions or concerns with steps defined in this service bulletin, contact Spartan Motors USA, Inc. Customer & Product Support Group.

All applicable industry safety standards must be followed when performing work identified in this procedure.

Service Bulletins are intended for use by Professional Technicians only. They are written to guide Professional Technicians in performing service to vehicles of specific nature in conjunction with industry standards. Professional Technicians are appropriately trained on industry standards and have the tools and equipment to perform procedures safely and properly.



Recall Service Bulletin



STEP-BY-STEP INSTRUCTIONS:

1. Chock wheels and release park brake.
2. Locate park brake adjuster and jam nut, on driver's side frame rail, forward of drive axle by cross member. Refer to FIG. 2-1.

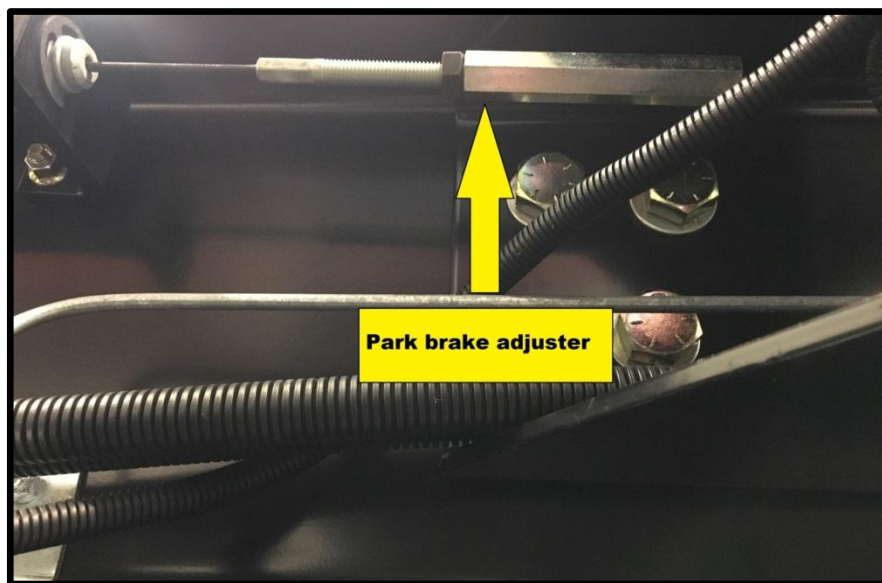


FIG. 2-1

3. Loosen jam nut and extend cable providing slack. Refer to FIG. 2-2.



FIG. 2-2

Service Bulletins are intended for use by Professional Technicians only. They are written to guide Professional Technicians in performing service to vehicles of specific nature in conjunction with industry standards. Professional Technicians are appropriately trained on industry standards and have the tools and equipment to perform procedures safely and properly.



Recall Service Bulletin



4. Locate park brake cable connector clip on driver's side frame rail near output shaft of transmission. Refer to FIG. 3-1.

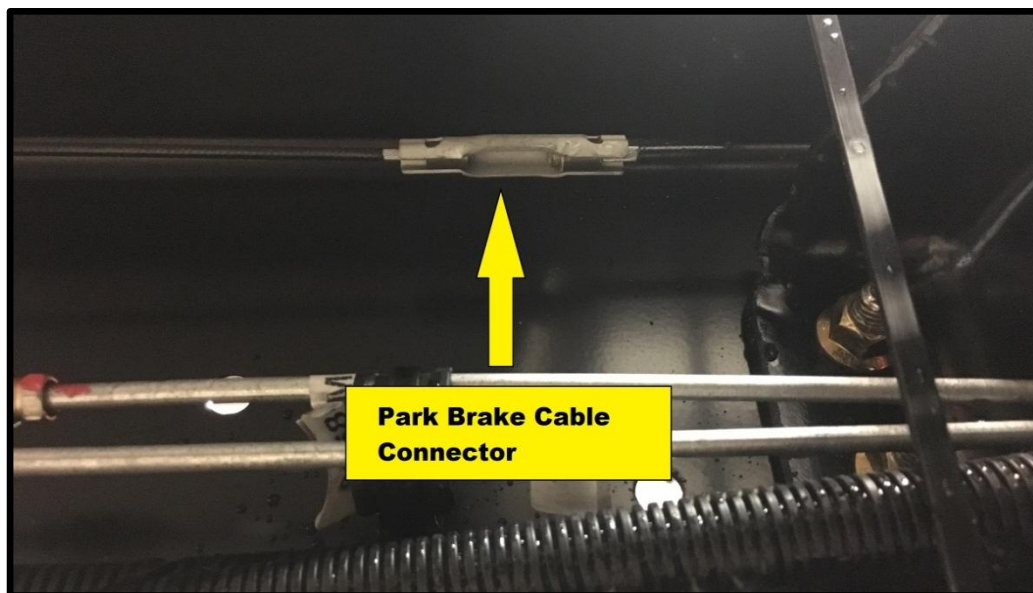


FIG. 3-1

5. Use channel lock pliers to release cable from connector clip. Refer to FIG. 3-2.

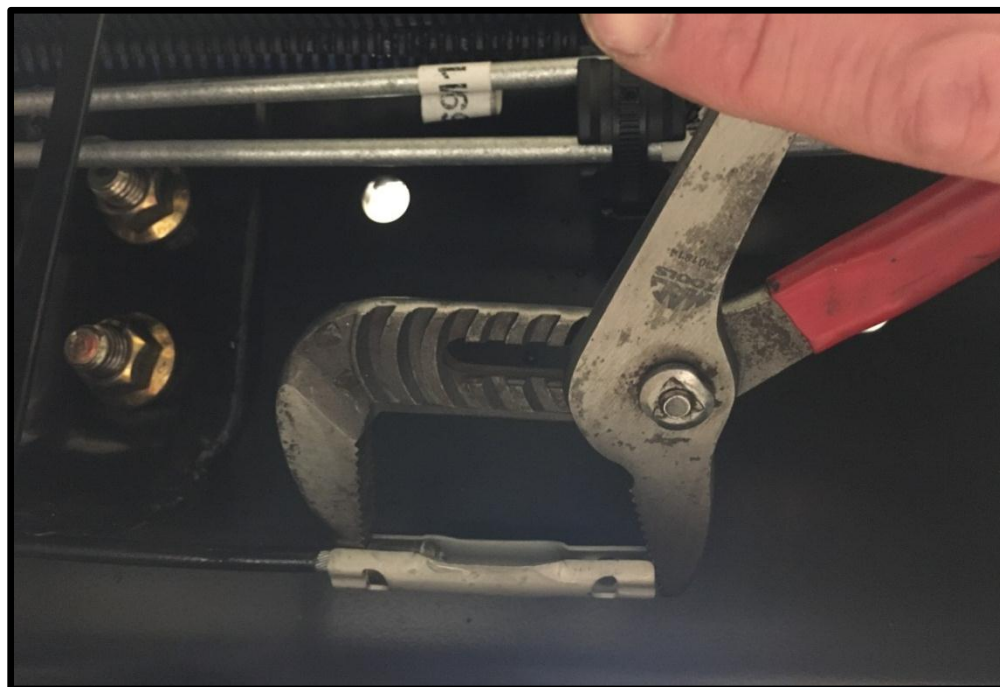


FIG. 3-2

Service Bulletins are intended for use by Professional Technicians only. They are written to guide Professional Technicians in performing service to vehicles of specific nature in conjunction with industry standards. Professional Technicians are appropriately trained on industry standards and have the tools and equipment to perform procedures safely and properly.



Recall Service Bulletin



6. Disconnect both ends of cable and properly dispose of original connector clip.
7. Take note with new connector that wide end of connector clip goes to front of bus. Refer to FIG. 4-1.

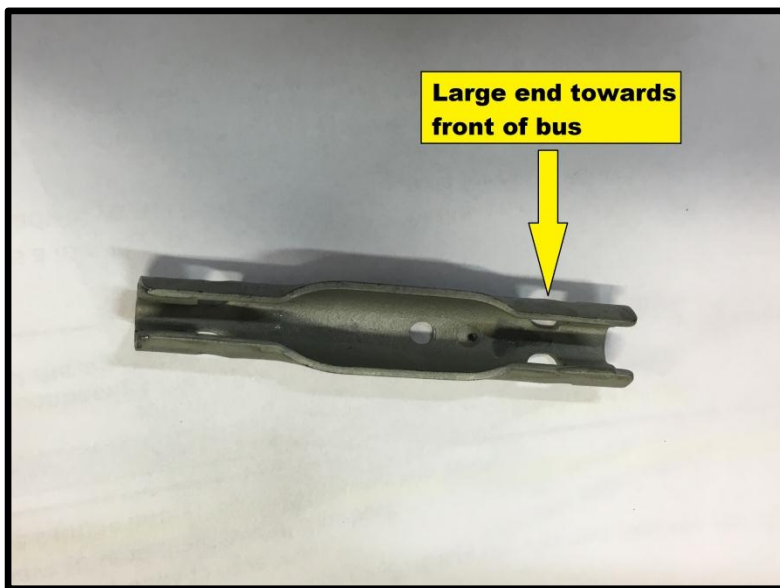


FIG. 4-1

8. Install cables into connector utilizing channel lock pliers until they are properly seated. Refer to FIG. 4-2.

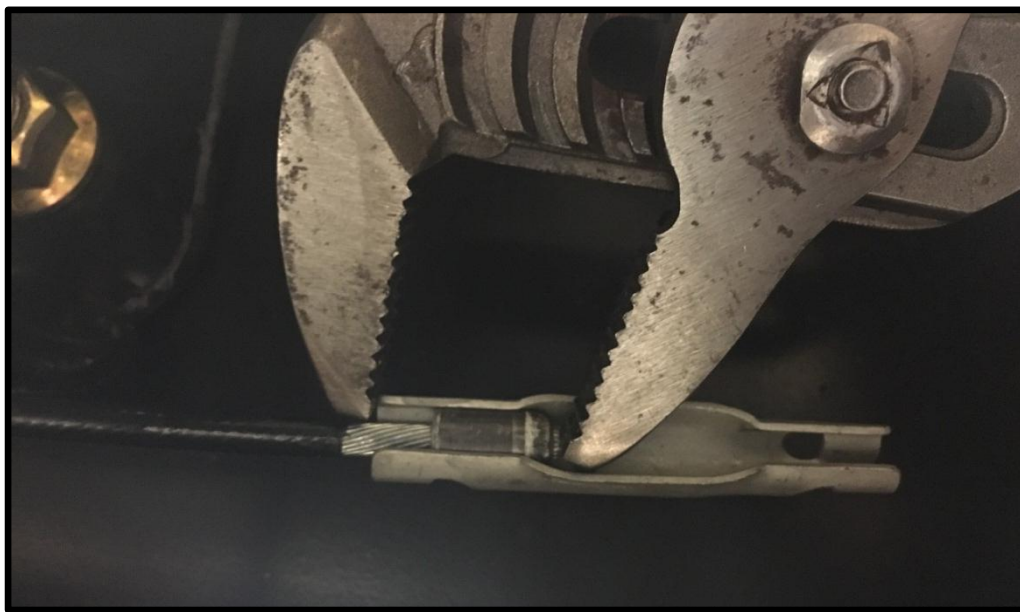


FIG. 4-2

Service Bulletins are intended for use by Professional Technicians only. They are written to guide Professional Technicians in performing service to vehicles of specific nature in conjunction with industry standards. Professional Technicians are appropriately trained on industry standards and have the tools and equipment to perform procedures safely and properly.



Recall Service Bulletin



9. Set park brake.

10. Tighten park brake adjuster until 300 lbs. of tension is achieved. Refer to FIG. 5-1.

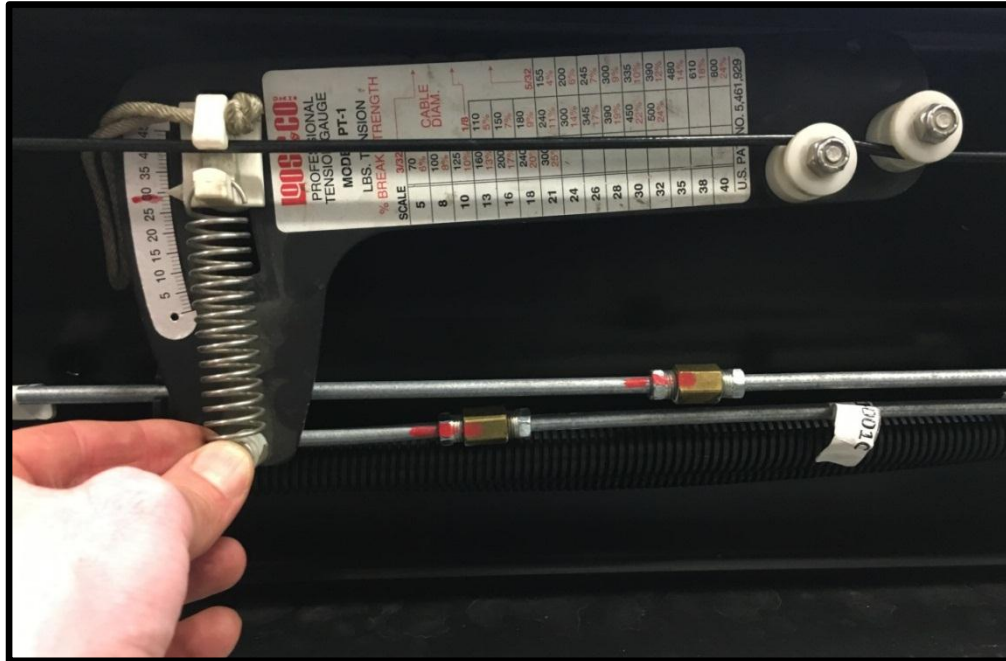


FIG. 5-1

11. Tighten jam nut to snug.

12. Check park brake for proper operation.

Service Bulletins are intended for use by Professional Technicians only. They are written to guide Professional Technicians in performing service to vehicles of specific nature in conjunction with industry standards. Professional Technicians are appropriately trained on industry standards and have the tools and equipment to perform procedures safely and properly.