

"DOCUMENT UNCONTROLLED IF PRINTED"						
DOC #	PROCESS NAME	PAGE	REVISION	STATION	BY	DATE
<b>16V950</b>	<b>Park Brake Engages With Open Door Signal</b>	1 OF 1		SER-E	C.WARD	12/23/2016

Read process before beginning. If you do not understand any part please contact: Chris Ward, Director of Parts and Warranty at 1-866-953-5555 or by E-mail @ cward@ARBOCSV.com.

Good Mechanics safety practice must be followed on any repairs.

Safety practices should include but not be limited to properly supporting the chassis, axles, blocking tires, and a work area free of clutter.

**Complaint:** FCCC Chassis Park Brake engages with door open signal at any speeds

**Cause:** Engineering electrical programming design

**Correction:** Change interlock signal to activate the Park Brake with ramp deploy or kneel switch activation

**Vehicles Affected:** 2015-2016 ARBOC Spirit of Liberty Units

**Labor Operation Code:** 057001

**Pre-Authorization Required**

**Labor Time Allowance:** 1 hour per unit

**Parts Returned:** No

**Tools Required**

**Information Link**

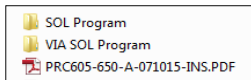
2003039 Cable, Programming/Diagnostic Interface Kit (Liberty)

<http://www.arbocsv.com/service/>

2003507 Cable, Flextech Diagnostic

**1. Update the Flextech Program**

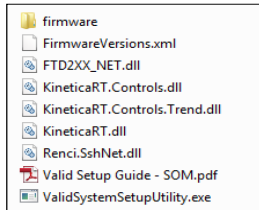
A. Obtain Spirit of Liberty (SOL) Flextech Software files from provided link and copy to a single folder on your laptop



B. Follow Flextech Programming Instructions (PDF PRC605-650-A-071015-INS - page 3)

**2. Update the Valid Systems Program**

A. Obtain Spirit of Liberty (SOL) Valid Programming Software from provided link and copy to a single folder on your laptop



B. If not previously completed, install the Valid Software (PDF Valid Setup Guide - pages 24-25) on a Laptop which can be connected to the Valid Module via diagnostic/interface kit

C. Follow instructions for Devices and Firmware update (pages 16-17)