

J080NAS3

TECHNICAL BULLETIN

17 MAR 2017



© Jaguar Land Rover North America, LLC

NOTE: The information in Technical Bulletins is intended for use by trained, professional Technicians with the knowledge, tools, and equipment required to do the job properly and safely. It informs these Technicians of conditions that may occur on some vehicles, or provides information that could assist in proper vehicle service. The procedures should not be performed by 'do-it-yourselfers'. If you are not a Retailer, do not assume that a condition described affects your vehicle. Contact an authorized Jaguar service facility to determine whether this bulletin applies to a specific vehicle.

INFORMATION

Changes are highlighted in blue

SECTION:

501-20B

SUBJECT/CONCERN:

SAFETY RECALL: Autoliv Passenger Airbag Operation

AFFECTED VEHICLE RANGE:

MODEL:	MODEL YEAR:	VIN:	ASSEMBLY PLANT:
XJ Range (X351)	2016-2017	W03351-W04583	Castle Bromwich

MARKETS:

NAS

CONDITION SUMMARY:

SITUATION:

An issue has been identified on certain vehicles within the listed Affected Vehicle Range where the front passenger airbag may not function properly due to a deviation in generant mix ratio.

ACTION:

Retailers are required to **HOLD** affected new vehicles that are within your control and refrain from releasing the vehicles for **new vehicle sale** pending completion of the Service Instruction detailed in this Technical Bulletin. Unsold vehicles should have this performed as part of the Pre-Delivery Inspection (PDI) process but **must** have it completed prior to vehicle handover to the customer.

Affected vehicles already in the hands of customers should be updated at the next available opportunity.

PARTS:



NOTE:

Order only the expected percentage demand of parts identified.

DESCRIPTION	PART NO. /SUNDRY CODE	QTY. /VALUE	EXPECTED % OF VEHICLES REQUIRING PARTS
Passenger airbag module	C2D5633	1	100
Nut and washer kit	C2S39739	8	100

SPECIAL TOOLS:

Refer to Workshop Manual/Service Instruction for any required special tools.

WARRANTY:



NOTE:

Check DDW to ensure that a vehicle is affected by this program prior to undertaking any rework action.

At the time of confirming a booking for vehicle repair, ensure that **all** outstanding Recalls and Service Actions are identified to ensure the correct parts are available and adequate workshop time is allocated for repairs to be completed at one visit.

Warranty claims must be submitted quoting the Program Code together with the relevant Option Code. SRO and parts information is included for information only. The Option Code(s) that allows for the drive in / drive out allowance can only be claimed if the vehicle is brought back into the workshop for this action alone to be undertaken.

Repair procedures are under constant review and therefore times / prices are subject to change; those quoted here must be taken as guidance only. Refer to TOPIx to obtain the latest repair time.

Warranty claims must be submitted or payment within 30 calendar days of completion of the repair.

 **NOTE:**

The nine-digit serial number of the new airbag module MUST be recorded on the claim verbatim.

PROGRAM CODE	OPTION CODE	DESCRIPTION	SRO	TIME (HOURS)	PARTS /SUNDRY CODE	QTY. /VALUE
J080	B	Install a new passenger airbag module	76.73.37	2.6	C2D5633 C2S39739	1 8
J080	C	Install a new passenger airbag module	76.73.37 10.10.10	2.6 0.2	C2D5633 C2S39739 -	1 8 -
J080	D	Install a new passenger airbag module	76.73.37 86.93.93	2.6 0.2	C2D5633 C2S39739 -	1 8 -
J080	E	Install a new passenger airbag module	76.73.37 86.93.93 10.10.10	2.6 0.2 0.2	C2D5633 C2S39739 - -	1 8 - -
		Disengage/re-engage transit mode				
		Disengage/re-engage transit mode				
		Drive in/drive out				

Normal Warranty policies and procedures apply.

**SERVICE
INSTRUCTION:**

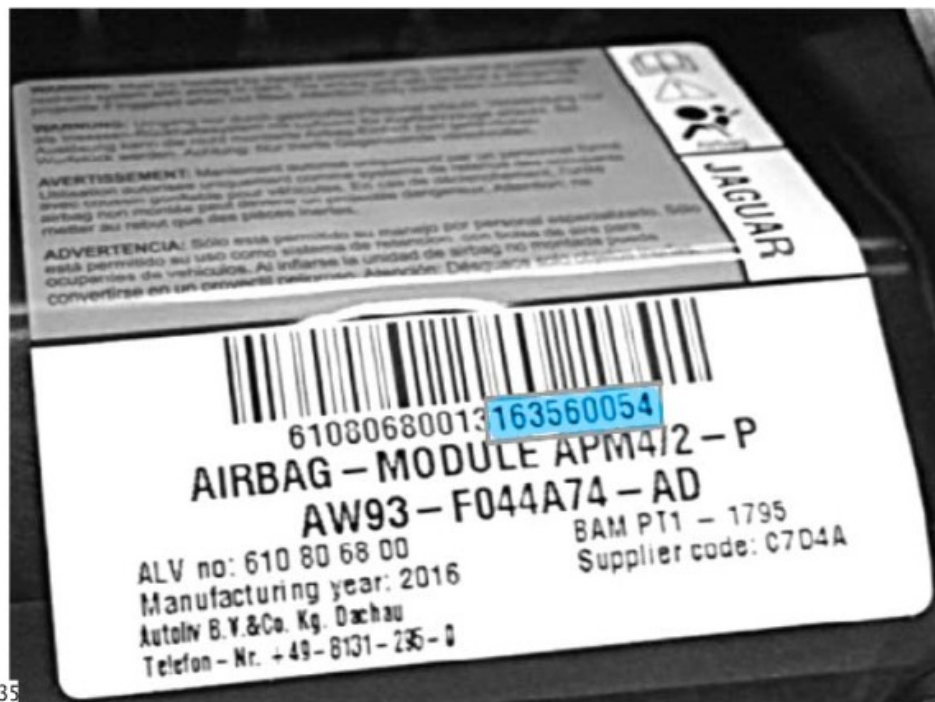
NOTE:

The Airbag may be referred to as 'Air Bag' in TOPIx.

1

NOTE:

The nine-digit serial number of the new airbag module (example highlighted in blue) **MUST** be recorded on the claim verbatim.



E205535

Locate and record the nine-digit serial number of the new airbag module on the claim verbatim.

2

NOTE:

The nine-digit serial number of the new airbag module MUST be recorded on the claim verbatim.

Install a new passenger airbag module (see TOPIx Workshop Manual section 501-20B: Supplemental Restraint System - Passenger Air Bag Module).

- 3 Safely dispose of the original airbag (see TOPIx Workshop Manual section 501-20B: Supplemental Restraint System - Airbag Disposal).