



RECALL CAMPAIGN BULLETIN

Reference:

NTB17-005

Date:

January 24, 2017

VOLUNTARY RECALL CAMPAIGN 2015-2016 ROGUE OCCUPANT CLASSIFICATION SYSTEM CONTROL UNIT REPLACEMENT

CAMPAIGN ID #: PC526

NHTSA #: 16V-911

APPLIED VEHICLE: 2015-2016 Rogue (T32)

Check Service COMM to confirm campaign eligibility.

INTRODUCTION

Nissan is conducting a Voluntary Safety Recall Campaign on certain specific 2015-2016 Rogue vehicles to replace the Occupant Classification System (OCS) control unit. This service will be performed at no charge to owners for parts or labor.

IDENTIFICATION NUMBER

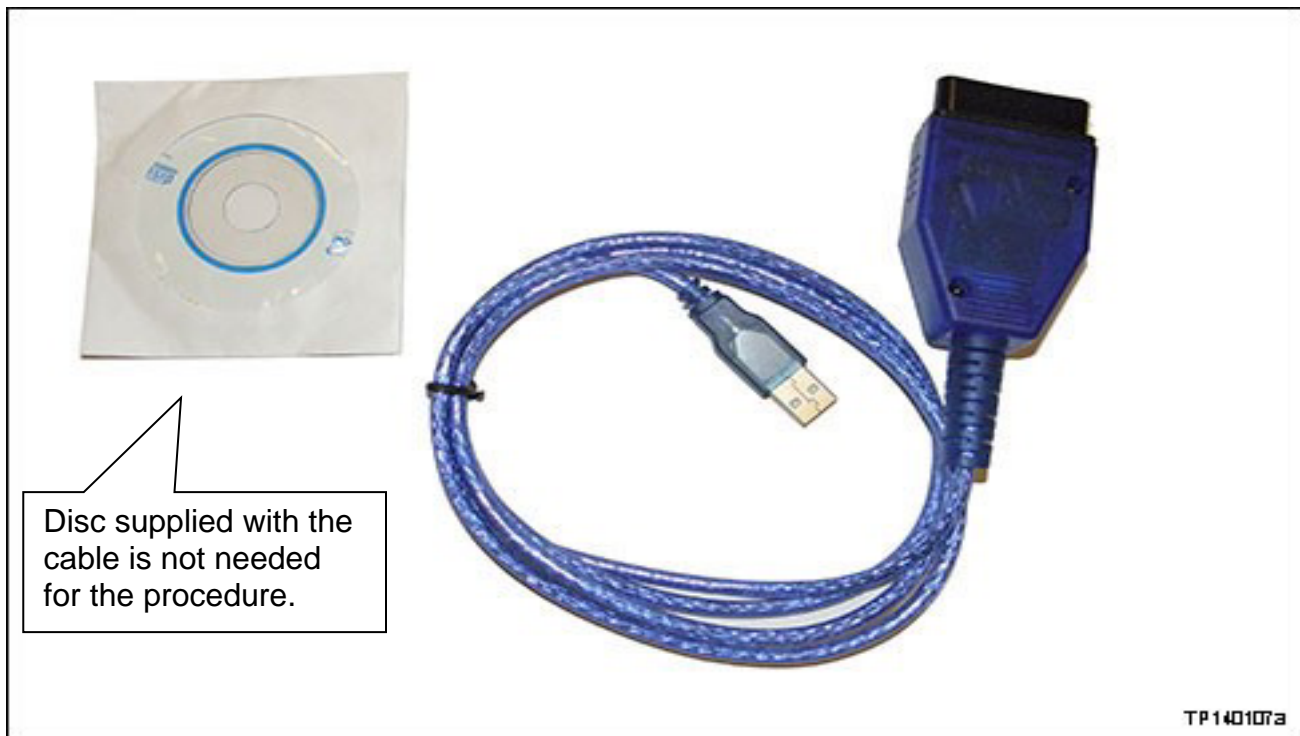
Nissan has assigned identification number PC526 to this campaign. This number must appear on all communications and documentation of any nature dealing with this campaign.

DEALER RESPONSIBILITY

It is the dealer's responsibility to check Service Comm for the campaign status on each vehicle falling within the range of this voluntary safety recall campaign which for any reason enters the service department. This includes vehicles purchased from private parties or presented by transient (tourist) owners and vehicles in a dealer's inventory. **Federal law requires that new vehicles in dealer inventory which are the subject of a safety recall must be corrected prior to sale. Failure to do so can result in civil penalties by the National Highway Traffic Safety Administration.** While federal law applies only to new vehicles, Nissan strongly encourages dealers to correct any used vehicles in their inventory before they are retailed.

Nissan Bulletins are intended for use by qualified technicians, not 'do-it-yourselfers'. Qualified technicians are properly trained individuals who have the equipment, tools, safety instruction, and know-how to do a job properly and safely. NOTE: If you believe that a described condition may apply to a particular vehicle, DO NOT assume that it does. See your Nissan dealer to determine if this applies to your vehicle.

REQUIRED SPECIAL TOOL J-51594 (OCS Reprogramming Cable)

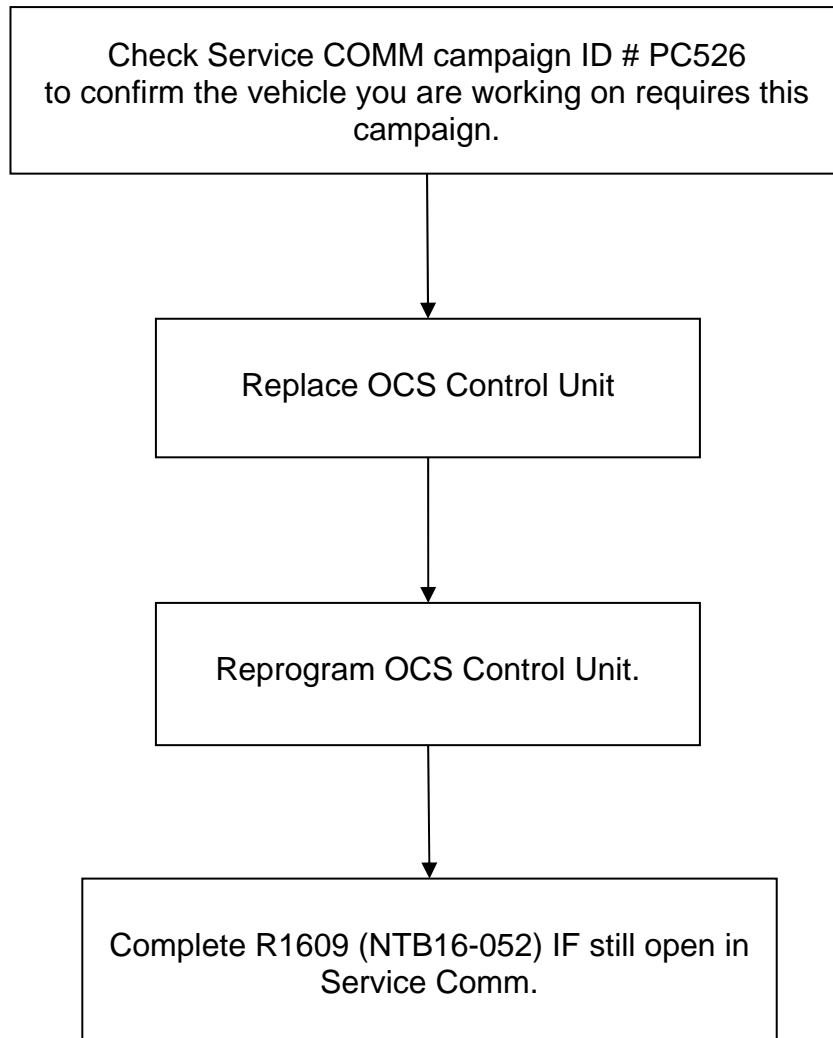


- One J-51594 OCS reprogramming cable has been supplied to each dealer. Additional cables can be obtained from TechMate at 1-800-662-2001.

NOTE:

- The Service Procedure in this bulletin uses CONSULT-III plus to reprogram the Occupant Classification System (OCS) Control Unit.

FLOW CHART



SERVICE PROCEDURE

Replace the Occupant Classification System Control Unit

1. Turn the vehicle ON, engine OFF.
2. Write down the radio settings.

Presets	1	2	3	4	5	6
AM						
FM 1						
FM 2						
SAT 1						
SAT 2						
SAT 3						
Bass	Treble		Balance		Fade	Speed Sen. Vol.

3. **If equipped**, write down the customer preferred setting for the Automatic Air Conditioning System.
 - If needed, refer to System Settings in the HAC section of the Electronic Service Manual (ESM).
4. Turn the vehicle OFF.
5. Disconnect the Negative terminal of the vehicle 12V battery.

IMPORTANT: Refer to the ESM section, **PG – Power, Supply & Ground Elements** for the procedure and cautions when disconnecting the 12V battery.

6. Wait three minutes before continuing.
7. Move the front passenger seat forward about ½ of its travel.
 - Moving the seat forward will give additional working space to access the OCS control unit.



Figure 1

8. Locate the OCS control unit under the front side of the seat cushion.
9. Disconnect the harness connector.
10. Remove the two screws and then remove the OCS control unit.

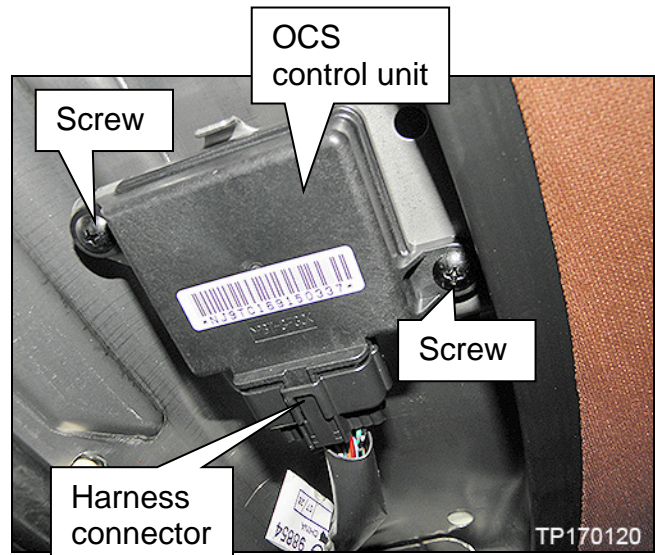


Figure 2

11. Select the correct OCS Control Unit from Parts Information and confirm that the pin count is the same as the OCS Control Unit being replaced. See Figure 19 on page 16.
12. Install the new OCS Control Unit in reverse order.
13. Connect the Negative battery terminal cable.
14. Reset/reinitialize systems as needed.
 - Refer to the ESM section, **PG – Power, Supply & Ground Elements** for a listing of systems that require reset/initialization after reconnecting the 12V battery.
 - Look in the PG section index for **ADDITIONAL SERVICE WHEN REMOVING BATTERY NEGATIVE TERMINAL**.
 - This list often includes items such as radio, power windows, clock, sunroof, etc.

Proceed to **OCS Control Unit Reprogram**.

OCS Control Unit Reprogram

CAUTION:

- Connect the GR8 to the 12V battery and select ECM Power Supply Mode. If the vehicle battery voltage goes below 12.0V or above 15.5V during reprogramming, the OCS may be damaged.
- Be sure to turn OFF all vehicle electrical loads. If a vehicle electrical load remains ON, the OCS may be damaged.
- Be sure to connect the AC Adapter. If the CONSULT PC battery voltage drops during reprogramming, the process will be interrupted and the OCS may be damaged.

1. Make sure ASIST has been synchronized to the current date and all updates have been installed.
 - It is recommended that it be performed at the beginning of each day to confirm you have the latest software installed in your PC.

NOTE: The PC automatically gets applicable reprogramming software during ASIST synchronization.

2. Turn the CONSULT PC ON.
3. Install the driver for the J-51594 OCS reprogramming cable as follows:
 - This step is only required the first time this procedure is performed on any vehicle.
 - a. Keep the PC connected to the internet.
 - b. Connect the J-51594 OCS reprogramming cable to the PC USB port.
 - c. Wait 1 minute; the drivers will install automatically.

4. Open the vehicle hood, connect GR8 and set to ECM Power Supply Mode.

5. Turn the ignition ON (engine OFF).

6. Turn hazards ON.

7. Connect the J-51594 OCS reprogramming cable:
 - Connect to the vehicle's DLC connector and the PC USB port.
 - Make sure the cable is securely connected at both ends.

8. Prepare the vehicle for OCS Reprogramming as follows:

NOTE: In this Service Procedure, OCS is sometimes referred to as ODS.

- **Level the vehicle.**
- **No objects on the passenger seat.**
- **No occupants in the vehicle – including the servicing technician.**
- PC is outside of the vehicle on a suitable support.
 - Do not set the PC on the vehicle.
- Do not touch the vehicle during the OCS Reprogramming.
- Minimize vibrations of the vehicle.

9. Start the CONSULT PC, open ASIST and then select “**R1608 & R1609 OCS Reprogram**” on ASIST under Specialty Tools (Figure 3).

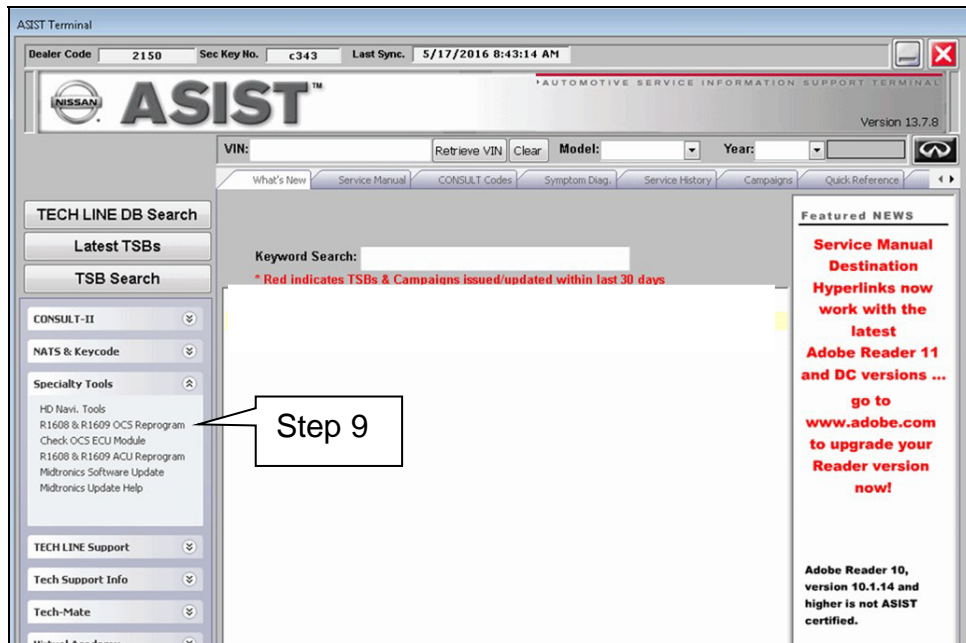


Figure 3

NOTE: If you get a black message screen as shown in Figure 4, this indicates that the reprogramming cable is not connected, or the cable driver did not install correctly.

- a. Close ODS Repro.
- b. Close ASIST.
- c. Start over from step 1 on page 6.

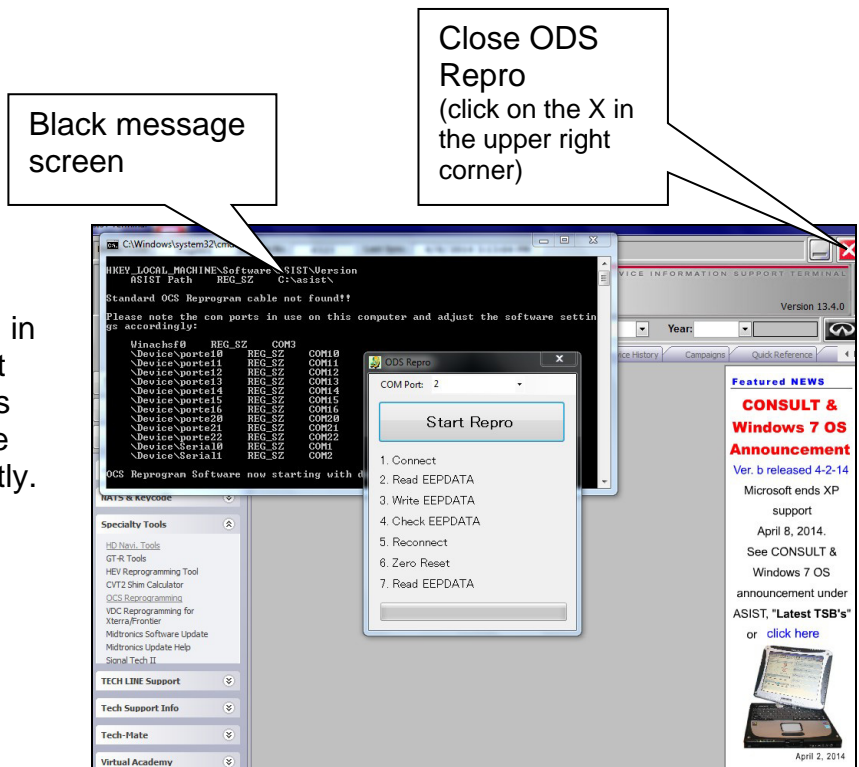


Figure 4

10. Select **Start Repro**.

NOTE: If the error message “an error occurred on connection” displays:

- a. Disconnect the J-51594 OCS reprogramming cable, both ends.
- b. Reconnect the cable; make sure it is securely connected at both ends.

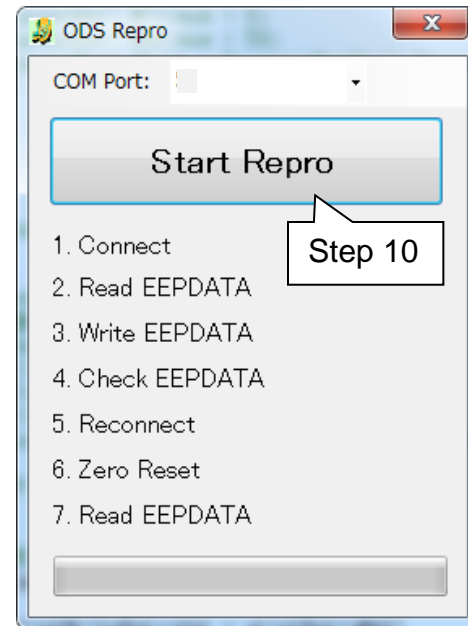


Figure 5

11. Turn the ignition ON (engine OFF).

12. Select **OK**.

- After selecting OK in Figure 6, the OCS reprogramming will start.

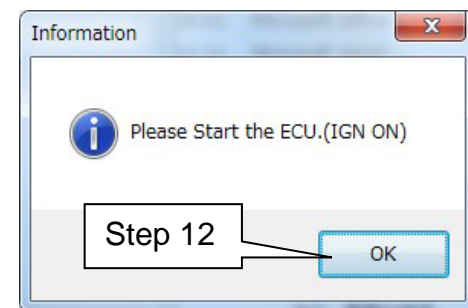


Figure 6

- Items 1 through 4 (Figure 7) will likely complete quickly.
- If the OCS reprogramming stops (displays NG) at item 1, 2, 3 or 4, refer to Figures 12 through 15 on pages 12 and 13.

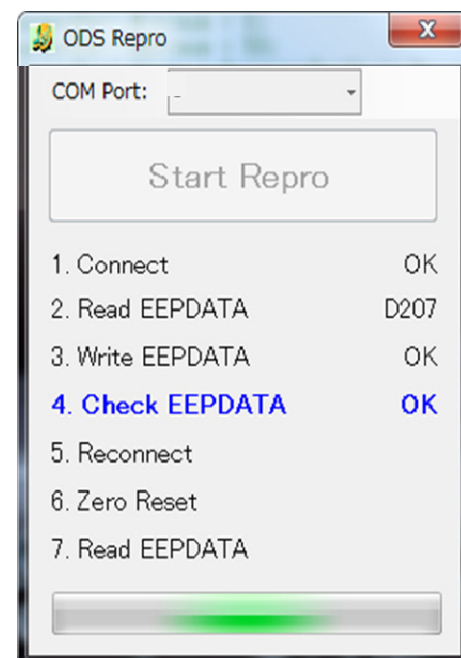


Figure 7

13. Cycle the ignition OFF > ON.

14. Select **OK**.

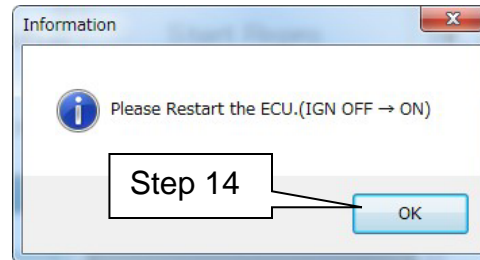


Figure 8

- After selecting OK in Figure 8, the OCS reprogramming will likely complete items 5 through 7 quickly (see “Complete” screen, Figure 10 below).
- If the OCS reprogramming stops (displays NG) at item 5, 6 or 7, refer to Figures 16 through 18 on pages 14 and 15.

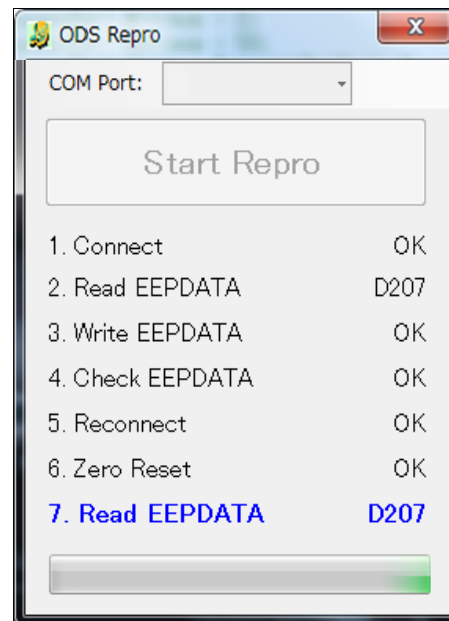


Figure 9

15. When this screen displays (Figure 10), OCS reprogramming is complete.

16. Select **OK**.

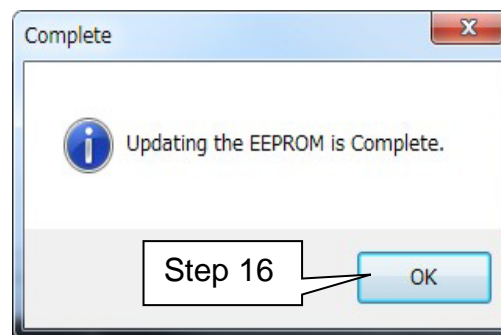


Figure 10

17. Close the program (click on the red X in the upper right corner).

18. Turn the ignition OFF.

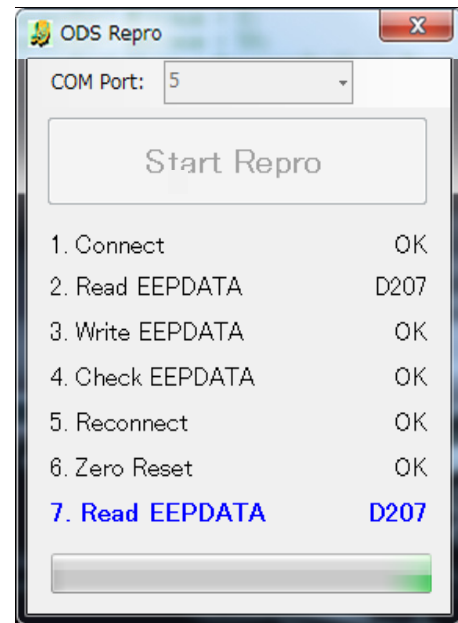




Figure 11

19. Disconnect the J-51594 OCS reprogramming cable.

20. Disconnect the GR8 and turn hazards OFF.

21. Turn the ignition ON and observe the air bag warning light and the front passenger air bag status light:

- The air bag warning light  should illuminate for 7 seconds and then go out.
- The front passenger airbag status light  should illuminate for 7 seconds and then either stay illuminated or go out, depending on the occupation of the front passenger seat.

NOTE: If the air bag warning light or the front passenger airbag status light does not operate as described above, there may be an issue not covered by this campaign. Refer to ASIST and the appropriate ESM for additional diagnostic and repair information.

22. OCS Reprogramming is Complete.

NOTE:

- Zero Point Reset was included in the reprogramming – it is not necessary to perform as a separate step.
- Figures 12 through 18 on pages 12 through 15 are provided as reference if the OCS reprogramming stops (displays NG) at one of the items (1-7).

APPENDIX

- #1 - If Connect indicates NG:
 - a. Click OK on the accompanying error message.
 - b. Turn the ignition OFF.
 - c. Close ODS Repro (click on the red X in the upper right corner).
 - d. Restart from step 1 on page 6.

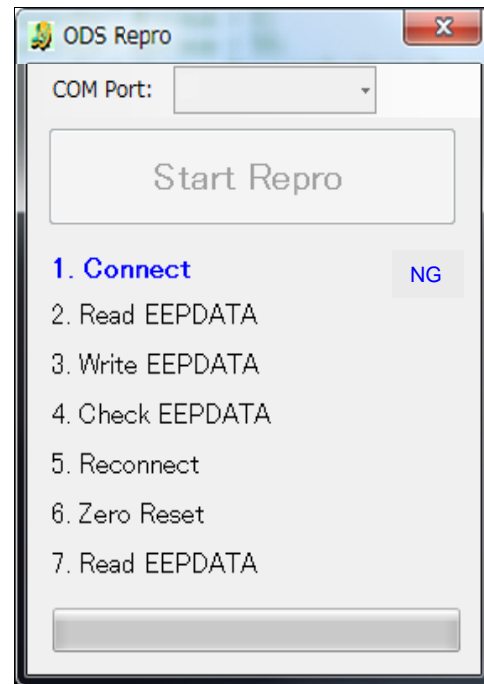


Figure 12

- #2 - If Read EEPROMDATA indicates NG:
 - a. Click OK on the accompanying error message.
 - b. Turn the ignition OFF.
 - c. Close ODS Repro (click on the red X in the upper right corner).
 - d. Restart from step 1 on page 6.

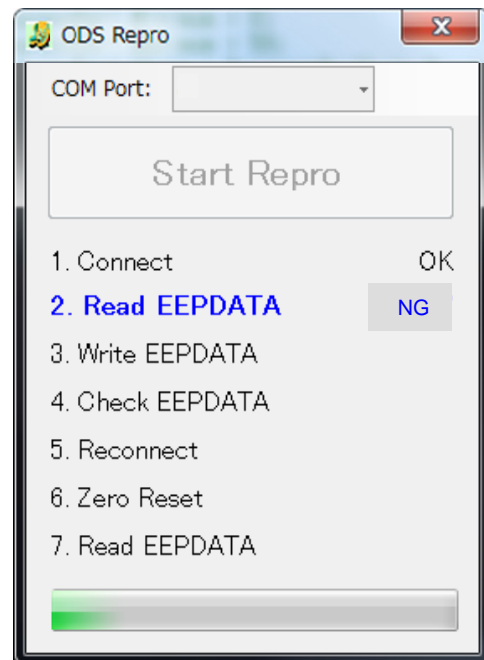


Figure 13

- #3 - If Write EEPROMDATA indicates NG:
 - a. Click OK on the accompanying error message.
 - b. Turn the ignition OFF.
 - c. Close ODS Repro (click on the red X in the upper right corner).
 - d. Restart from step 1 on page 6.

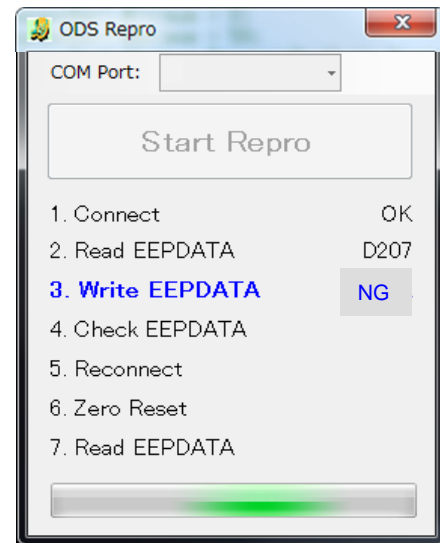


Figure 14

- #4 - If Check EEPROMDATA indicates NG:
 - a. Click OK on the accompanying error message.
 - b. Turn the ignition OFF.
 - c. Close ODS Repro (click on the red X in the upper right corner).
 - d. Restart from step 1 on page 6.

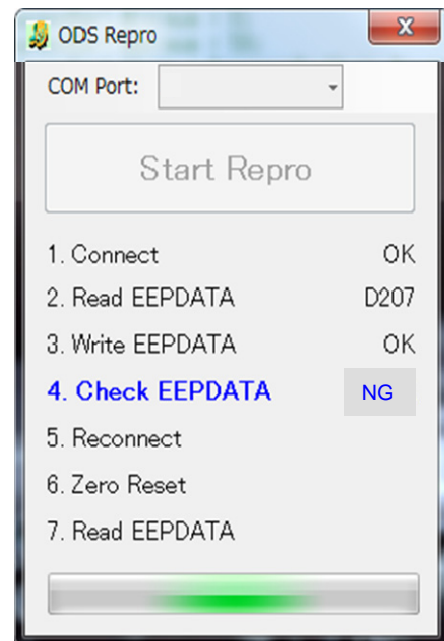


Figure 15

- #5 - If Reconnect indicates NG:
 - a. Click OK on the accompanying error message.
 - b. Turn the ignition OFF.
 - c. Close ODS Repro (click on the red X in the upper right corner).
 - d. Restart from step 1 on page 6.

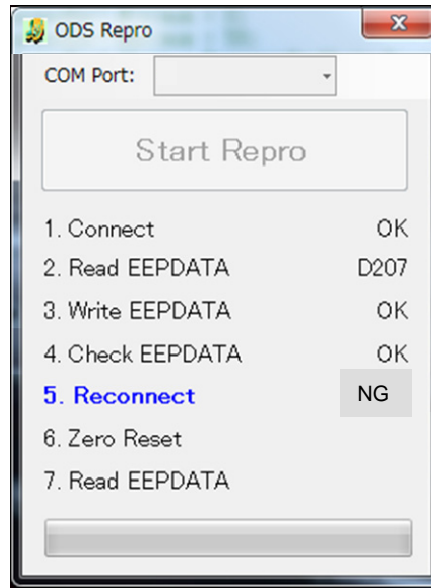


Figure 16

- #6 - If Zero Reset indicates NG:
 - a. Click OK on the accompanying error message.
 - b. Cycle the ignition OFF > ON.
 - If needed, retry ignition OFF > ON 5 times.
 - c. If Zero Reset still indicates NG, close ODS Repro (click on the red X in the upper right corner), and restart from step 1 on page 6.

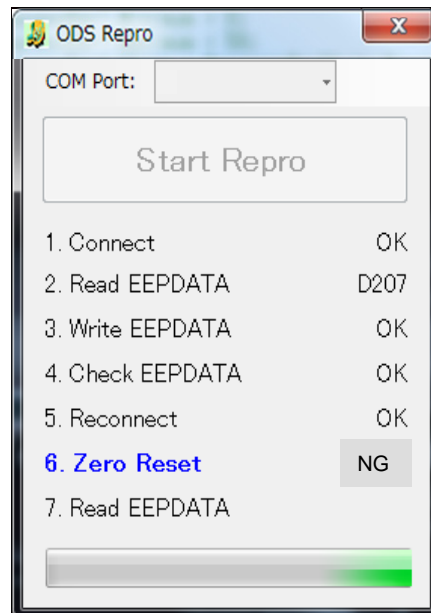


Figure 17

- #7 - If Read EEPROMDATA indicates NG:
 - a. Click OK on the accompanying error message.
 - b. Turn the ignition OFF.
 - c. Close ODS Repro (click on the red X in the upper right corner).
 - d. Restart from step 1 on page 6.

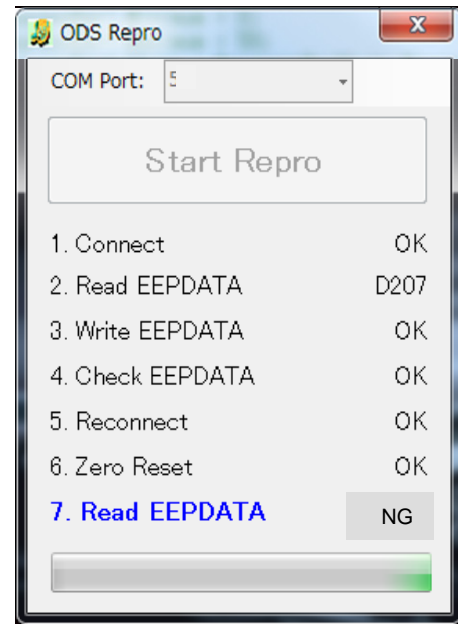


Figure 18

PART INFORMATION

MODEL	DESCRIPTION	PART #	QUANTITY
2015-2016 Rogue	OCS ECU (Occupant Classification System Control Unit)	(1) (2)	1

- (1) Refer to the electronic parts catalog (FAST) and look up the OCS ECU assembly part number by VIN.
- (2) Confirm that the number of pins of the new part are the same as the original OCS Control Unit (See Figure 19).

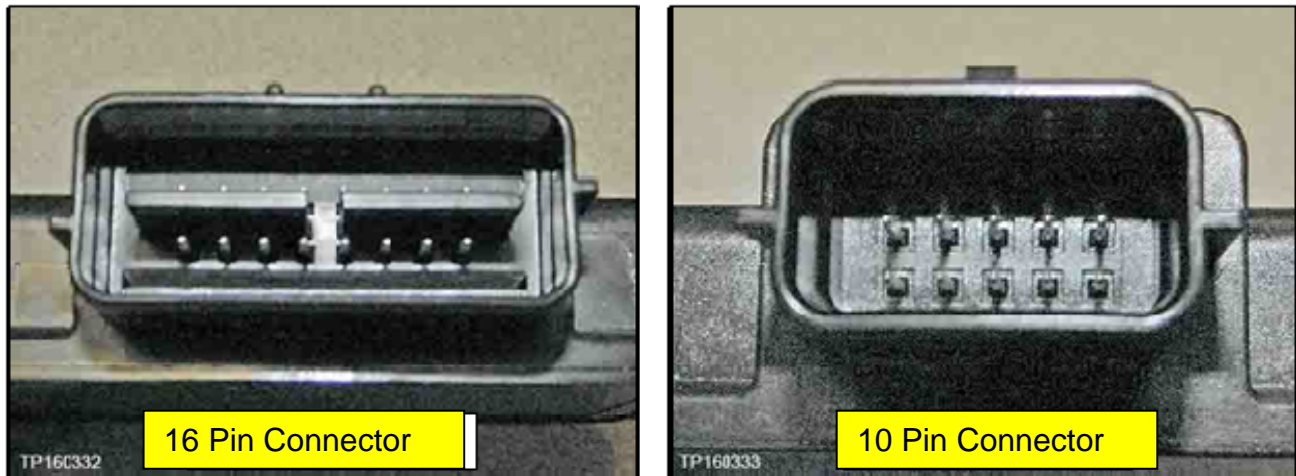


Figure 19

CLAIMS INFORMATION

Submit a Campaign (CM) line claim using the following claims coding:

CAMPAIGN ("CM") ID	DESCRIPTION	OP CODE	FRT
PC526	Replace OCS Control Unit and Reprogram	PC5260	0.8 hrs.