



Recall Campaign

NHTSA#: 16V-905

Flate Rate: 9903340

TC#: 2017-004

RC005

Inspect ONLY

.1 hr

RC013

Inspect & Rpr

.4 hr

Date of Publication: January 2017

Inspection Required prior to submitting Parts Order

Action Required

Inspect entrance step for correct routing of wires for the door magnet.
Reroute door magnet wires when required.

Model / Serial Numbers

2016 Alante Class A Motorhomes

31L	G1AL0098-0131
30M	G1AM0052-0055
32N	G1AN0051
31V	G1AV0119-0180
26X	G1AX0070-0150
26Y	G1AY0065-0108

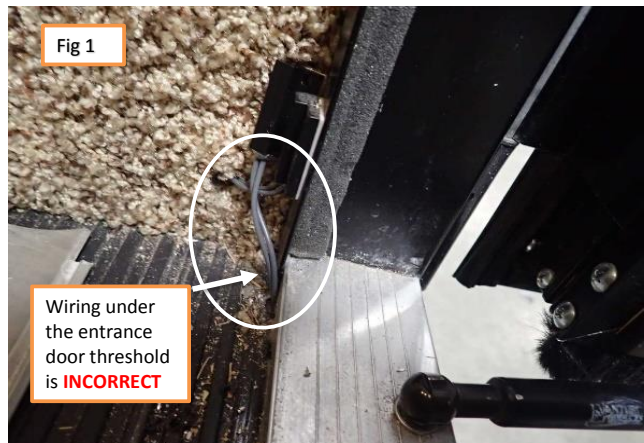
2016 Precept Class A Motorhomes

31UL	G1UL0142-0395
35UN	G1UN0077-0088
35UP	G1UP0071-0082
29UR	G1UR0083-0148
35S	G1US0056-0197

Supplies

Screw Driver
3/8" Drill Bit

Inspect location of wires for the Entrance Step Magnet



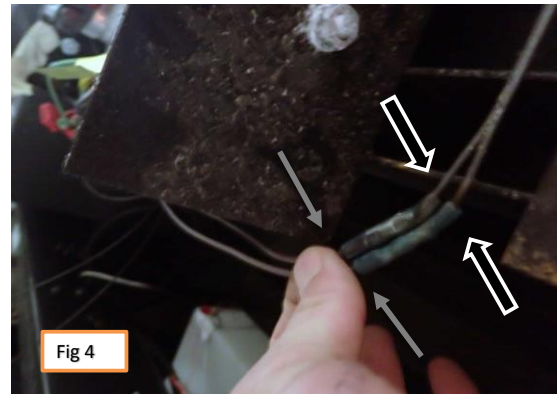
Step

- 1 Inspect location of the wiring for the entrance step magnet.
Correct location is **above the door threshold** and through side of the step well.
Incorrect location is **under the door threshold**. **Fig: 1**

REPAIR INSTRUCTIONS to relocate Entrance Step Wires



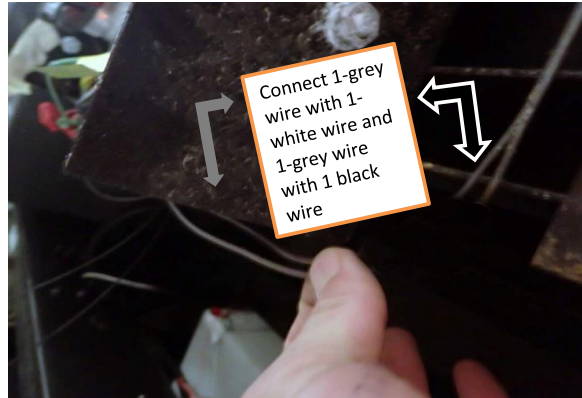
- 2 **Fig: 2** Remove the screw at each end of the metal door threshold and remove the threshold.



- 3 **Fig 3:** Locate the step magnet wires (2- grey) under the step that are attached to the coach wires (1- white and 1-black).
Fig 4: Cut each wire on either side of the connectors. Pull the step magnet wires (2-grey) up through the door threshold



- 4 **Fig 5 :** Measure 1" back from door frame and 1" up from the floor. Drill a 3/8" hole through the step well.
Fig 6: Run both grey step magnet wires through the hole.



- 5 **Fig 7:** Strip the step magnet wires (grey) and the wires from the coach (1white and 1-black)1/4" back.
Connect 1-grey step magnet wire to (1) white coach wire, and a 1-grey step magnet wire to (1) black coach wire with connectors. It does not matter which step magnet wire is connected to which coach wire.
- 6 Reinstall the step threshold and check functionality of step.