



Thor Motor Coach Recall Repair Instructions

Recall # **16V-893**

Description/Title: **Mor-Ryde Ramp Door Hinge Assembly Weld Failure**

Affected Product Line(s): **Certain 2016 and 2017 Outlaw Motor Homes**

Service Campaign # : **RC000125**

Released Date: **2/10/17**

Failure Code: **TMCRC80556Y Inspection
TMCRC80556V Repair**

Document Date: **3/1/2017**

Time Allowed: **0.3 – Inspection
1.0 - Repair**

Document Revision: **C**

Mor-ryde Safety Recall RD153-001 Ramp Door Hinge Assembly Weld Failure

FOR REPAIR ONLY:

Parts Required: Mor-Ryde Ramp Door - Service Advisory Kit – TMC Item number: 0390836

It has been decided the vehicles in this recall population may have been manufactured with a Mor -ryde ramp door hinge which could separate from the door frame due to an incorrect weld on the hinge pin. If the hinge pin separates the ramp door may pull loose from the vehicle while an individual is utilizing the door, leading to an increased risk of personal injury.

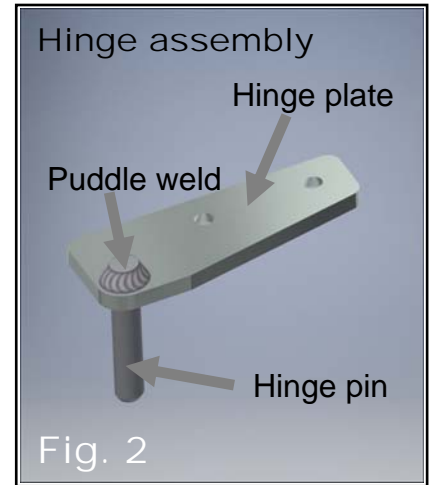
INSPECTION INSTRUCTIONS

Step 1

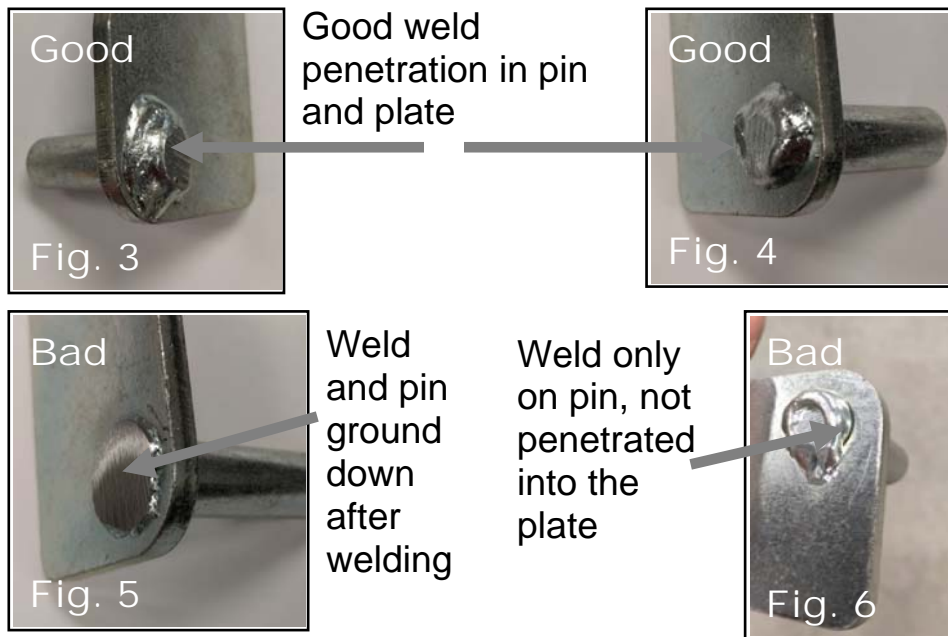
Locate the unit on a level, flat, hard surface. Chock the wheels.

Step 2

Hinge Inspection - The hinges on the Mor-ryde ramp door need to be inspected for adequate puddle weld on the back of the hinge. The hinges in question are located at the bottom corners of the door, Figure 1. With the door closed, the puddle weld is not visible, Figure 2.



Open door and clear any black caulk or foam from the bottom of the hinge to allow access to the back side of the hinge, exposing the weld. Using a light, inspect the welds using the following figures 3, 4, 5, and 6 as examples. Take a picture of each hinge weld. **IMPORTANT!** Your visual inspection is to ensure the weld is adequate, but most importantly that the weld and pin have not been ground down as in figure 5.



Pass: The weld is complete, has penetrated the plate and the pin.

Fail: The weld does not penetrate both the plate and the pin, or it has been ground down after it was welded.

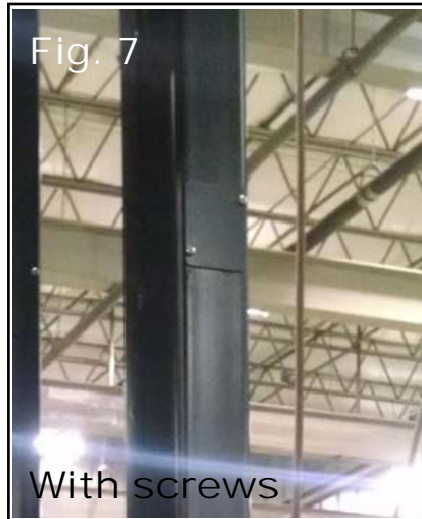
Step 3

If the hinges pass inspection, there replacement is not required. **Be sure to include picture of the hinges on the Pre-Authorization.** If hinge weld does not pass inspection, continue to step 4 for kit installation instructions.

IF IT IS DETERMINED THAT THE HINGES NEED TO BE REPLACED YOU WILL NEED TO ORDER TMC ITME NUMBER 0390836 BEFORE PROCEEDING WITH THE REPAIR.

Step 4

Mor-ryde Hinge Replacements - Open rear ramp door and remove covers over the spring adjusting bolts on both sides of frame. There are two different versions of these covers as shown in Figures 7 and 8.



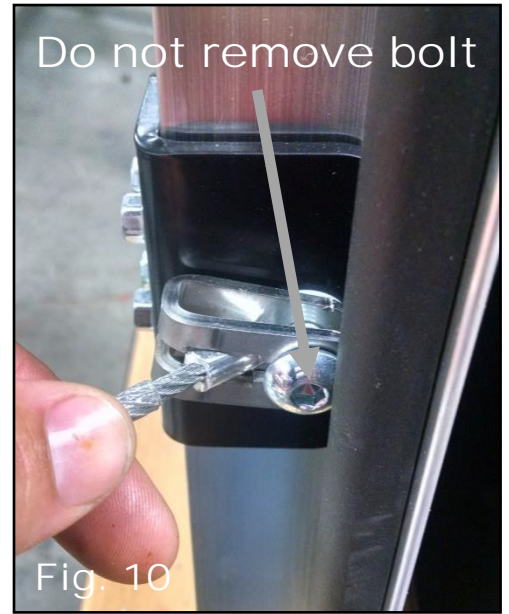
After the cover is removed, mark the position of the hook and loosen the 3/4" bolt until the hooks touch the plate that the bolt head is sitting on, Figure 9. Do this on both sides of the frame. It is easiest to use an air ratchet for this.



Loosen bolt using a 3/4" socket until this hook touches the plate that the bolt head is sitting on.

To unhook the cable from the door, close the door until the cable no longer has tension on it. With a pair of needle nose pliers, push the end of the cable into the clip and pull the cable end out first, Figure 10. **Do not remove the cable bracket.** Repeat on opposite side. **Warning!** At this point, you have all the weight of the door to control.

Carefully lower the door down to the ground supporting the door and being careful not to damage the door or the frame. Starting with the bottom bolt, remove the hinges and replace with new, Figure 11. Replace both hinges.



Using the Mor-ryde Hinge Replacement steps above in reverse, reinstall the door and adjust tension to original marked position of the hook. Reseal the hinge using black silicone.