



Steps to repair defective ramp door cable bracket weld

****BE MINDFUL OF THE RAMP DOOR CABLES IN THE EVENT THAT THEY SHOULD BECOME SEPARATED FROM THE DOOR.**

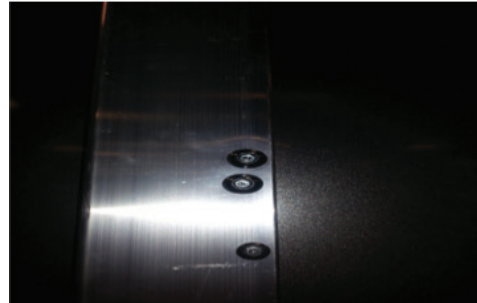
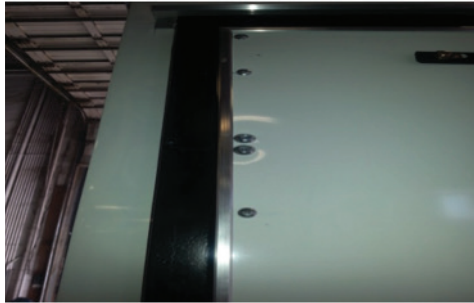
1. Block the rear of the trailer.
2. This repair will be accomplished with the ramp door closed, so that the ramp door spring will not have to be adjusted or manipulated.
3. With the ramp door in the closed position, use the supplied (1/4") bit to drill two holes through the ramp door. The two holes in the cable bracket should be used as a starting guide.



- a. Be careful that the chuck of the drill does not come into contact with the ramp door cable.



4. Use the supplied bolts to reinforce bracket. Security head should be on outside of trailer with the nylock nut on inside.



- a. Depending on the thickness of the door, you will use either the 2" or 2 3/4" bolt.
 - b. Apply a small amount of silicone to lip of bolt head to prevent water penetration.
5. Use the supplied bit to tighten all four bolts. Make sure bolt ends do not interfere with proper function of ramp door cable.



6. Open and close door, verify proper function.
7. Remove the blocks from the rear of the trailer and put your tools away. Have a nice day!