



## RECALL CAMPAIGN BULLETIN

Reference:

NTB16-118

Date:

December 1, 2016

### **VOLUNTARY SAFETY RECALL CAMPAIGN 2016 TITAN XD WITH CUMMINS 5.0L; FUEL TANK BREATHER TUBE**

**CAMPAIGN ID #:** PC494

**APPLIED VEHICLE:** 2016 Titan XD (A61)

**APPLIED ENGINE:** Cummins 5.0L Diesel

**Check Service COMM to confirm campaign eligibility.**

#### **INTRODUCTION**

Nissan is conducting a voluntary safety recall campaign on certain specific 2016 model year Titan XD vehicles equipped with a Cummins 5.0L engine to inspect the fuel tank breather tube. Depending on inspection results, the breather tube and/or the fuel tank and other related fuel system parts may be replaced. The inspection, and any repairs based on inspection results, will be performed at no charge for parts or labor.

#### **IDENTIFICATION NUMBER**

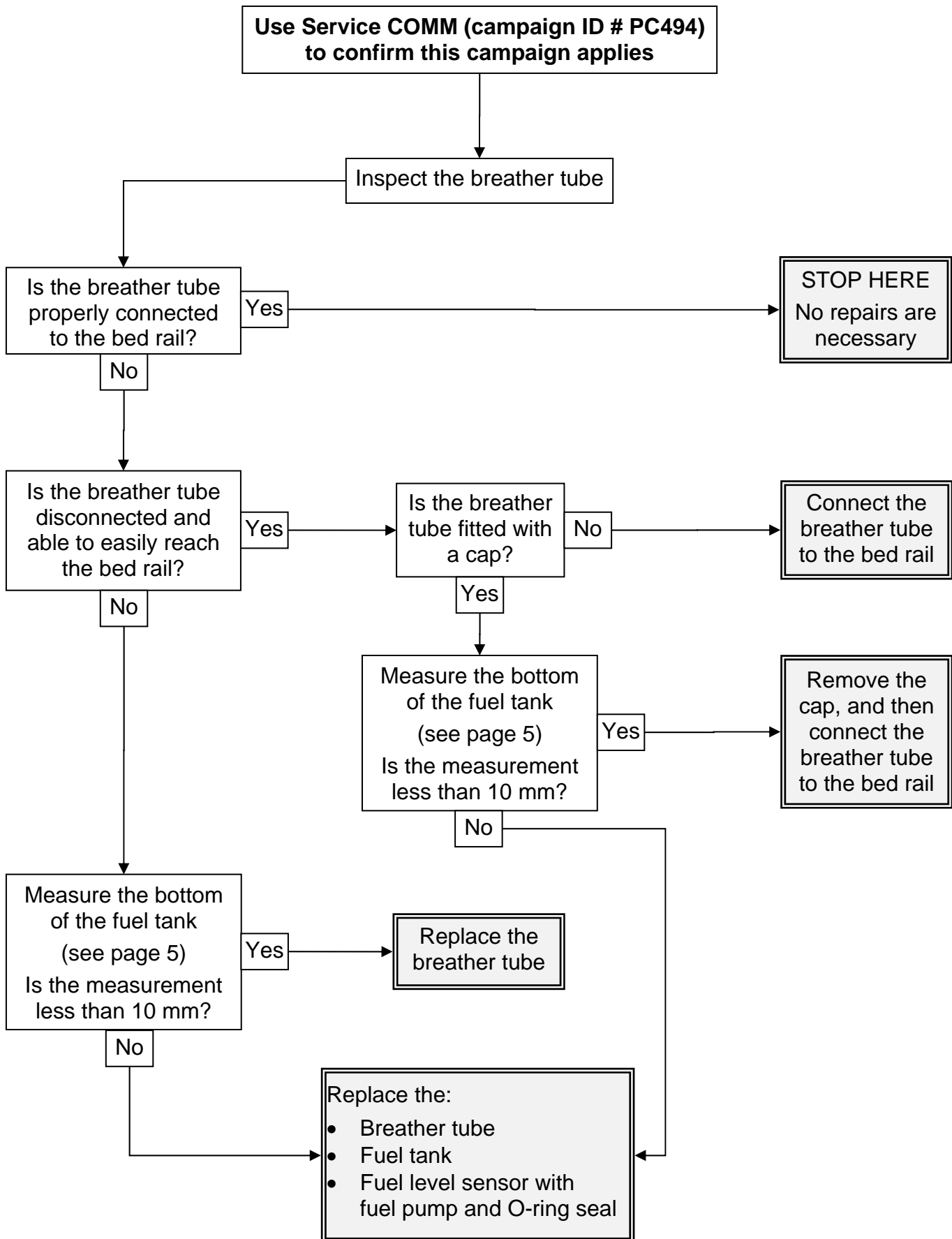
Nissan has assigned identification number PC494 to this campaign. This number must appear on all communications and documentation of any nature dealing with this campaign.

#### **DEALER RESPONSIBILITY**

It is the dealer's responsibility to check Service COMM for the campaign status on each vehicle falling within the range of this voluntary safety recall campaign which for any reason enters the service department. This includes vehicles purchased from private parties or presented by transient (tourist) owners and vehicles in a dealer's inventory. **Federal law requires that new vehicles in dealer inventory which are the subject of a safety recall must be corrected prior to sale. Failure to do so can result in civil penalties by the National Highway Traffic Safety Administration.** While federal law applies only to new vehicles, Nissan strongly encourages dealers to correct any used vehicles in their inventory before they are retailed.

Nissan Bulletins are intended for use by qualified technicians, not 'do-it-yourselfers'. Qualified technicians are properly trained individuals who have the equipment, tools, safety instruction, and know-how to do a job properly and safely. **NOTE:** If you believe that a described condition may apply to a particular vehicle, DO NOT assume that it does. See your Nissan dealer to determine if this applies to your vehicle.

## REPAIR OVERVIEW



## SERVICE PROCEDURE

1. Set and raise the vehicle on a suitable lift.
2. Locate the fuel tank breather tube (breather tube). See Figure 1.

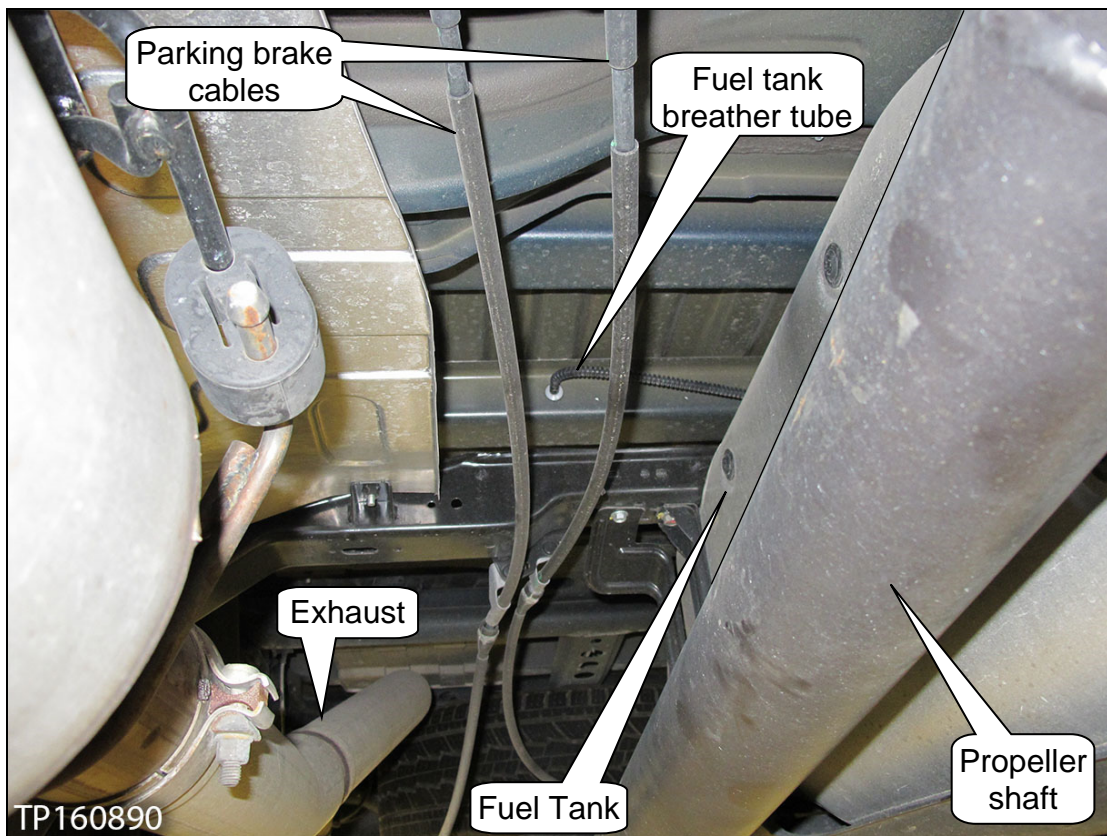


Figure 1

3. Inspect the breather tube.
  - a. If the breather tube is properly connected to the bed rail (see Figure 2), STOP HERE. No further inspection or repairs are necessary.

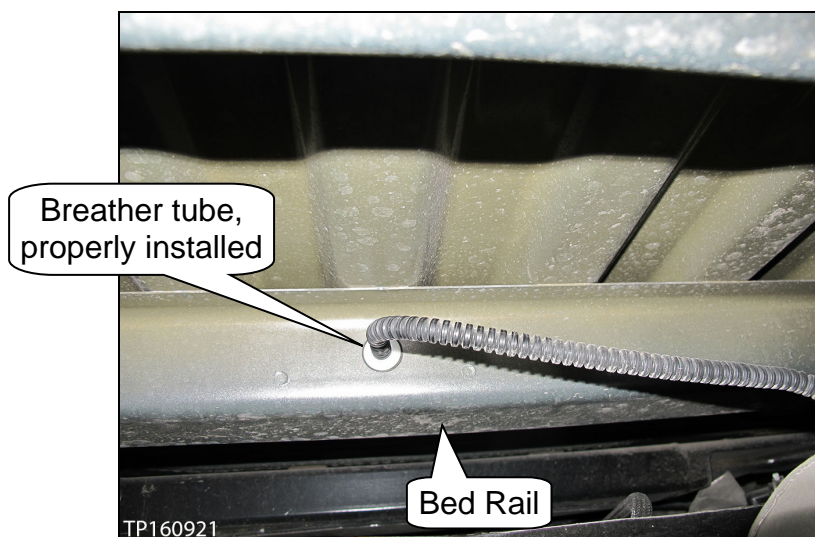


Figure 2

b. If the breather tube is not connected but can easily reach the bed rail connection hole and does NOT have a cap fitted to it (see Figure 3, 4, and 5):

b1. Connect the breather tube to the bed rail connection hole (see Figure 3).  
Inspection/repairs are complete.

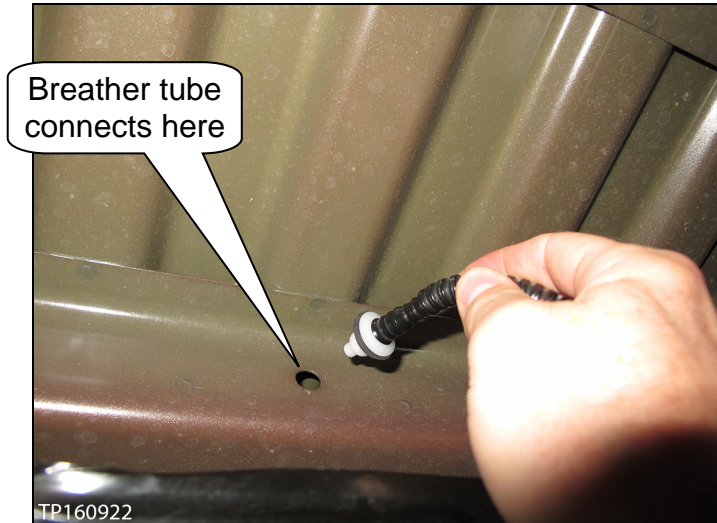


Figure 3

c. If the breather tube is not connected but can easily reach the bed rail connection hole and it DOES have a cap fitted to it (see Figure 4 and 5):

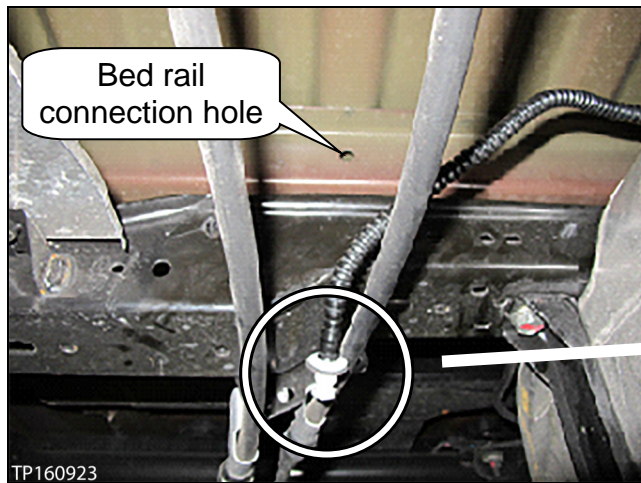


Figure 4

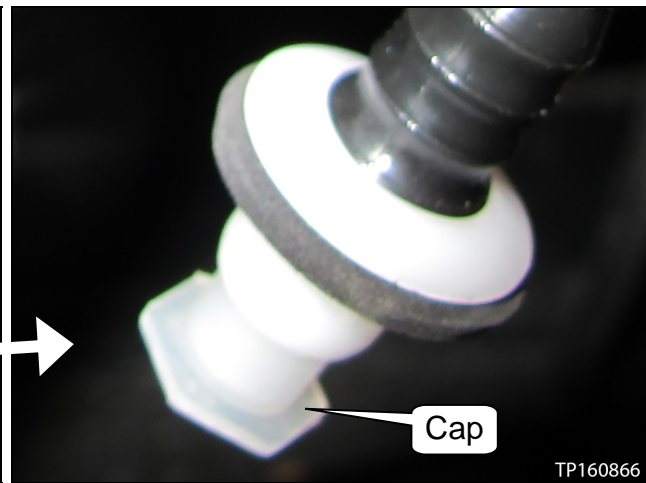


Figure 5



c1. Measure the bottom of the fuel tank (see Figure 6, 7, and 8).

c2. If the measurement is less than 10 mm, remove the cap, and then connect the breather tube to the bed rail connection hole.

c3. If the measurement is 10 mm or greater, replace the:

- Breather tube,
- Fuel tank, and
- The fuel level sensor with fuel pump and O-ring seal.

- Refer to the Electronic Service Manual (ESM), section **FL-Fuel System**, for fuel tank and related components replacement.

**CAUTION:** Use a “fuel caddy” or other proper equipment and/or fuel storage container that meets local regulations and is dedicated for use with diesel fuel ONLY.

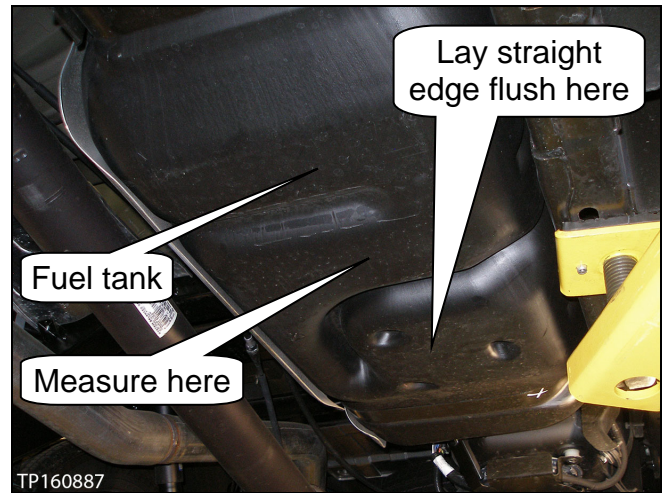


Figure 6

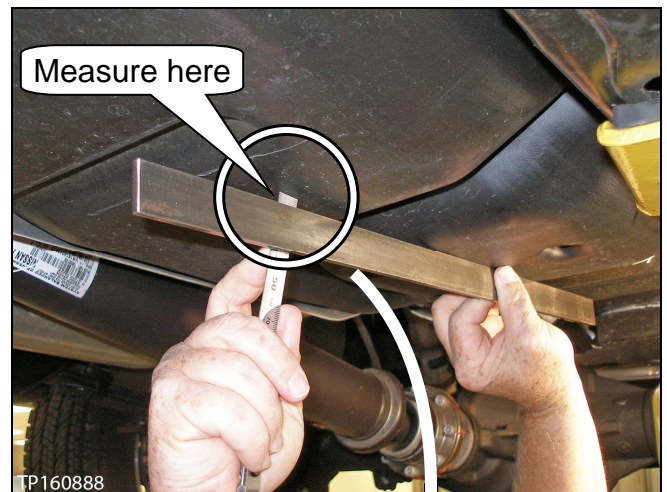


Figure 7

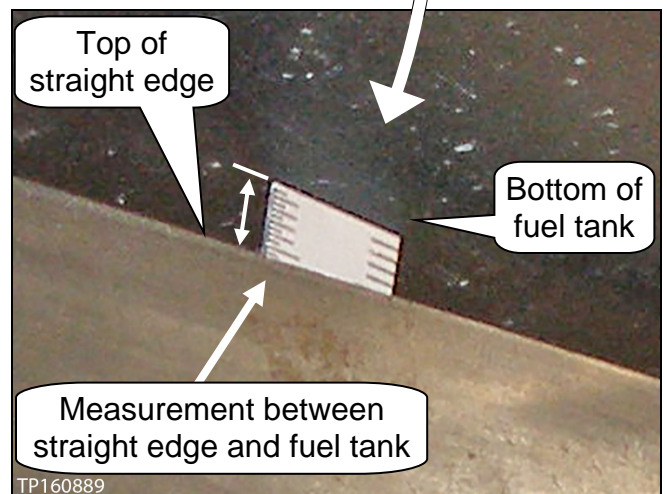


Figure 8

- d. If the breather tube is not connected and **CANNOT** reach the bed rail connection hole regardless if there is a cap fitted to it:

**NOTE:** The breather tube may not reach the bed rail connection hole due to being pinched by the fuel tank, or being tangled up. If tangled, untangle the breather tube, and then see if it will easily reach the bed rail connection hole. If it will reach, go back to step 3.

d1. Measure the bottom of the fuel tank (see page 5, Figure 6, 7, and 8).

d2. If the measurement is less than 10 mm, replace the breather tube.

d3. If the measurement is 10 mm or greater, replace the:

- Breather tube,
- Fuel tank, and
- The fuel level sensor with fuel pump and O-ring seal.

➤ Step d2 and d3: Refer to the Electronic Service Manual (ESM), section **FL-Fuel System**, for fuel tank and related components replacement.

**CAUTION:** Use a “fuel caddy” or other proper equipment and/or fuel storage container that meets local regulations and is dedicated for use with diesel fuel **ONLY**.

- e. If the breather tube cannot be seen (see Figure 9):

e1. Carefully reach above the fuel tank, find the breather tube, and then go back to step 3.

**CAUTION:** Be careful of sharp edges when reaching above the fuel tank.

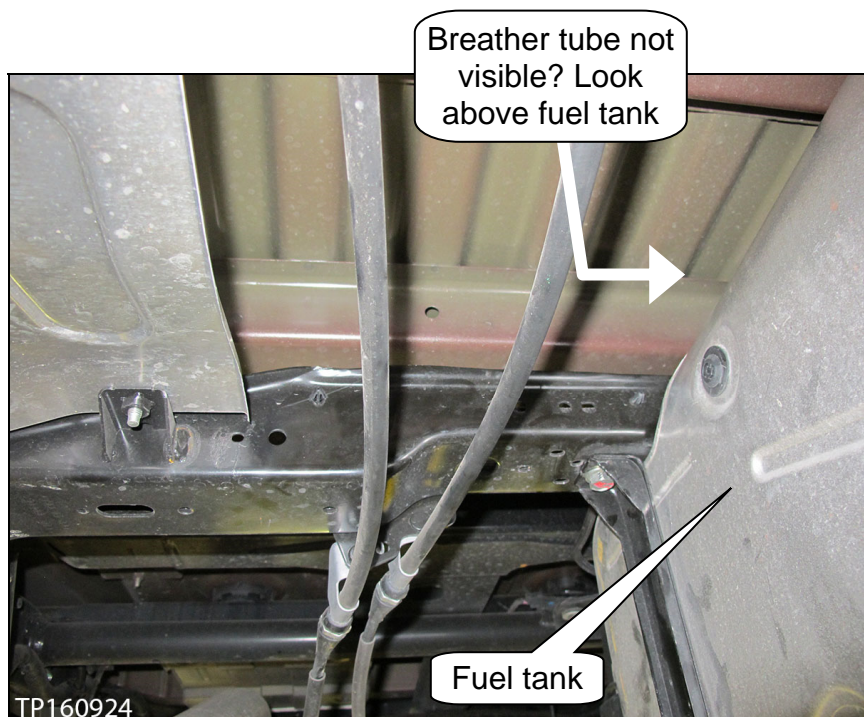


Figure 9

## PARTS INFORMATION

DESCRIPTION	PART NUMBER	QTY
TUBE-VENTILATION, FUEL TANK (breather tube)	17339-EZ40A	1 (a)
FUEL LEVEL SENSOR (includes fuel pump)	25060-EZ40A	1 (a)
PACKING-FUEL GAUGE (O-ring seal)	17342-7S000	1 (a)
TANK ASSY-FUEL	17202-EZ40A	1 (a)

(a) As needed.

## CLAIMS INFORMATION

Submit a Campaign (CM) line claim using the following claims coding

If the Breather Tube Passes Inspection:

CAMPAIGN (CM) ID #	DESCRIPTION	OP CODE	FRT
PC494	Inspect Breather Tube	PC4940	0.3 hrs.

If the Breather Tube Fails Inspection and the Fuel Tank Passes Inspection:

CAMPAIGN (CM) ID #	DESCRIPTION	OP CODE	FRT
PC494	Inspect Breather Tube and Replace Breather Tube	PC4942	0.6 hrs.

If the Fuel Tank Fails Inspection:

CAMPAIGN (CM) ID #	DESCRIPTION	OP CODE	FRT
PC494	Inspect Breather Tube and Fuel Tank, Replace Breather Tube, Fuel Level Sensor with Fuel Pump, and Fuel Tank	PC4943	1.9 hrs.