

## Christianson Ladder Hinge Repair Kit Installation

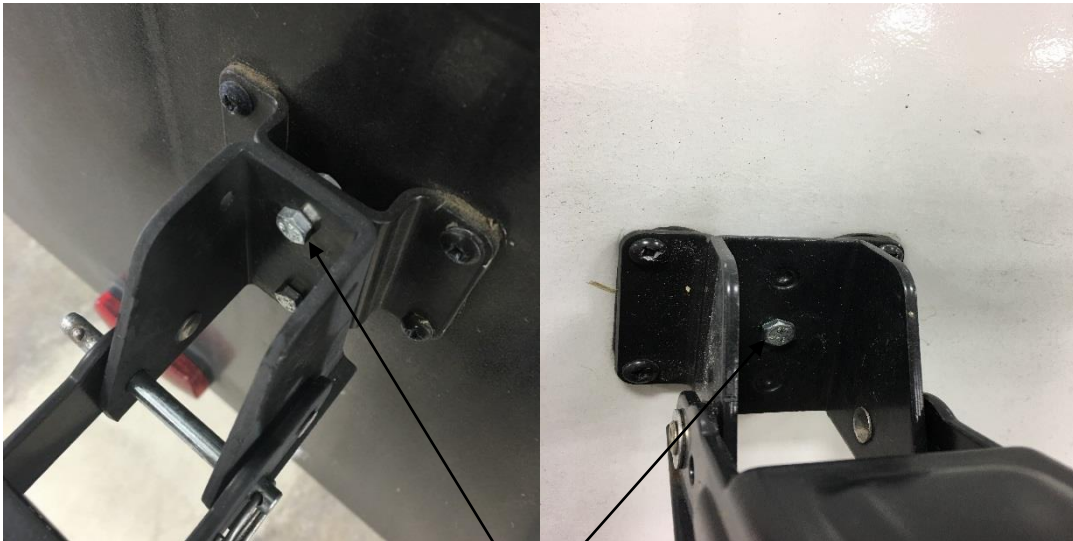
### Description

It has been decided the vehicles in this recall population may have been manufactured with a Christianson Industries ladder that folds up against the unit. The mounting bracket on the ladder could separate from the hinge due to an incorrect weld. There are six hinges on each ladder; the likelihood of all six hinges failing at the same time is remote.

### Inspection & Repair

Identify the ladder bracket

1. New style bracket – no repair required file claim for inspection only.



New style brackets are bolted together. No repair required.

File Recall Inspection warranty claim using warranty code 99.03.11.L, for 0.10 hours.

Note: No warranty will be paid if the VIN is not part of the affected list.

2. Old style bracket, is welded together and requires the addition of the kit.



Bracket is  
welded to  
hinge

3. Follow the Bracket installation instructions provided with the Bracket kit.

### **Parts**

Ladder Bracket Kit Part # 0263469

### **Warranty**

File Recall Repair warranty claim using warranty code 99.03.11.A, for 1.0 hours

Note: all times listed are per unit VIN.

**Please refer all questions and authorization requests to Cruiser Customer Service at 260-362-1075**